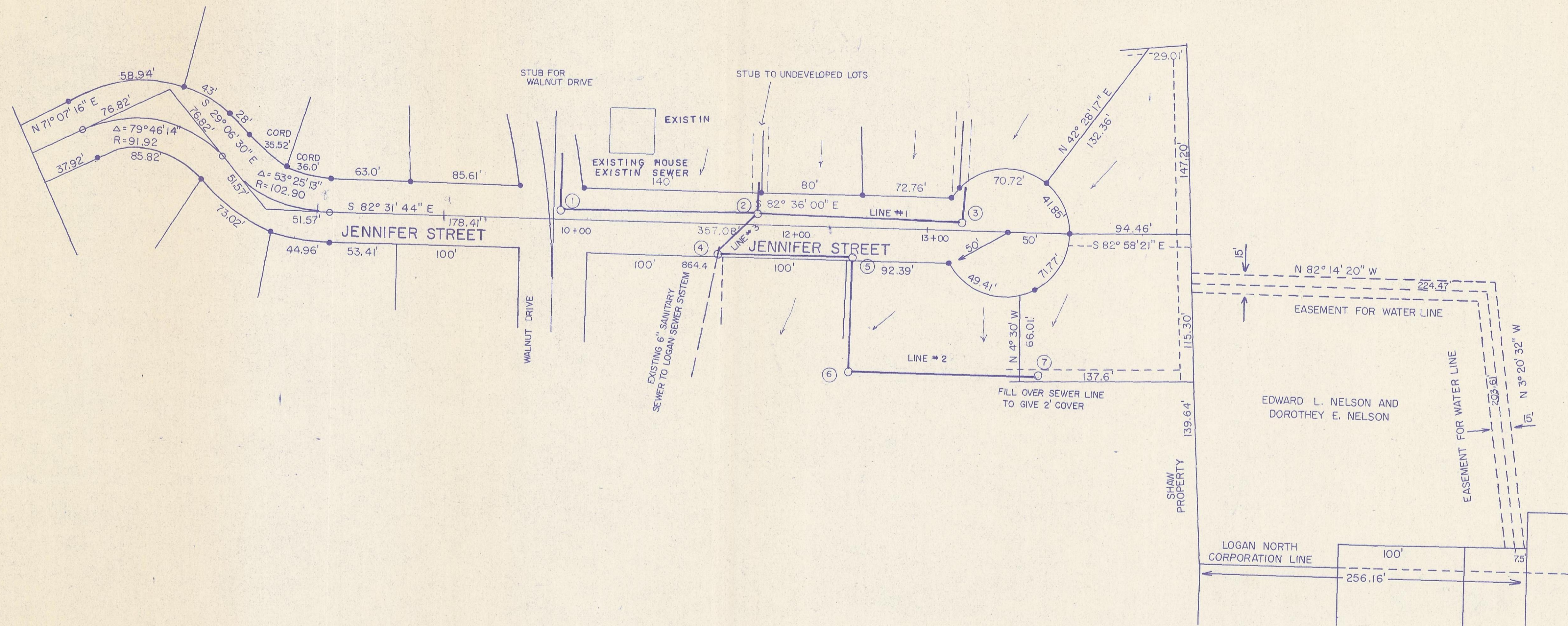
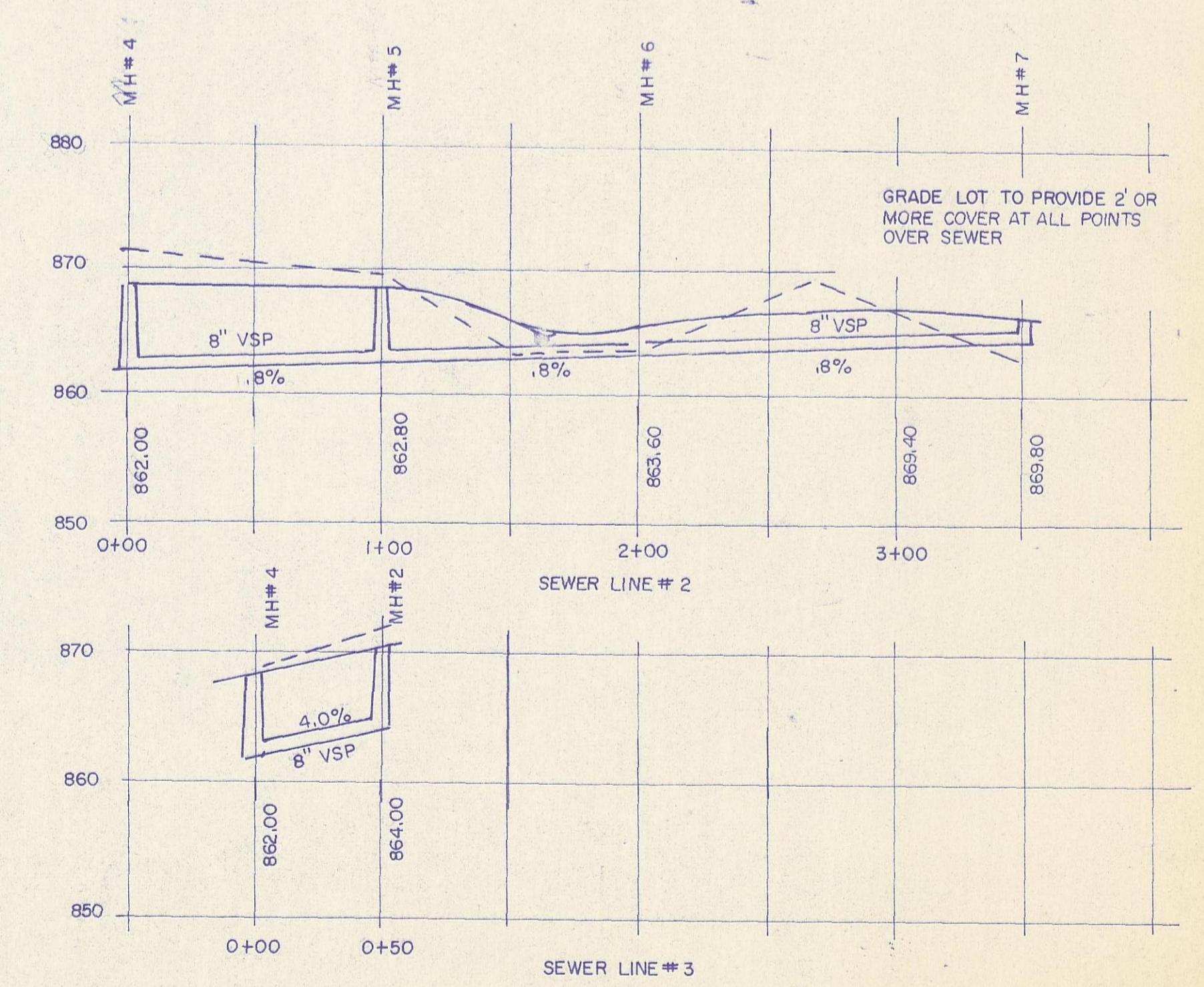
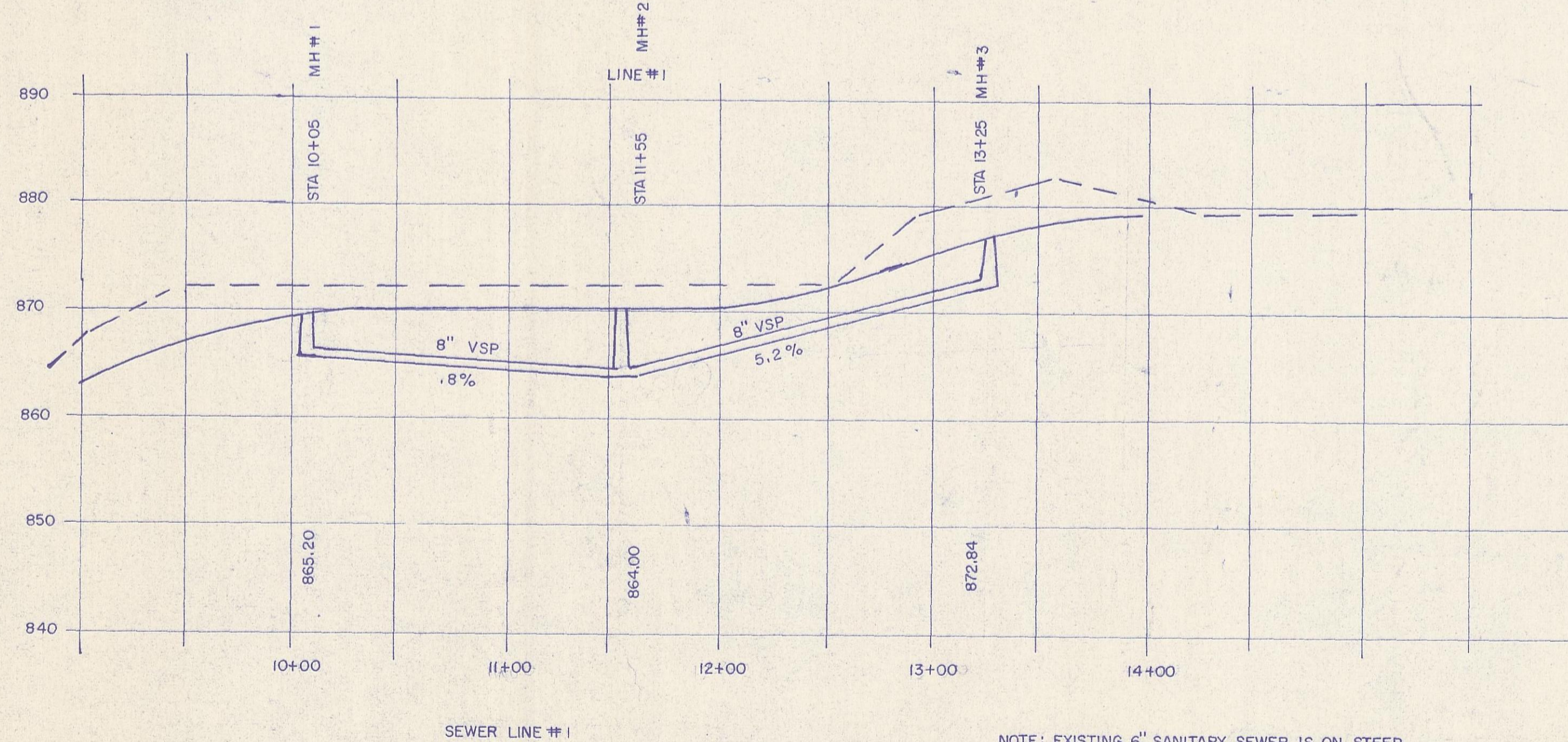


WALNUT HILLS SUBDIVISION  
JENNIFER STREET SEWER



JAMES E. GUTHRIE  
CONSULTING ENGINEER  
WORTHINGTON, OHIO

CONNECTION TO 6" SEWER LINE APPROVED  
BY OEPA LETTER, OCTOBER 30, 1972 TO  
JAMES E. GUTHRIE, ENGINEERING CONSULTANT



NOTE: EXISTING 6" SANITARY SEWER IS ON STEEP GRADE. ELEVATION OF MANHOLE #4 MAY VARY. ANY CHANGES IN CONNECTING SEWER GRADES WILL BE SUCH AS TO MAINTAIN 2 PER SECOND FLOW IN SEWER.