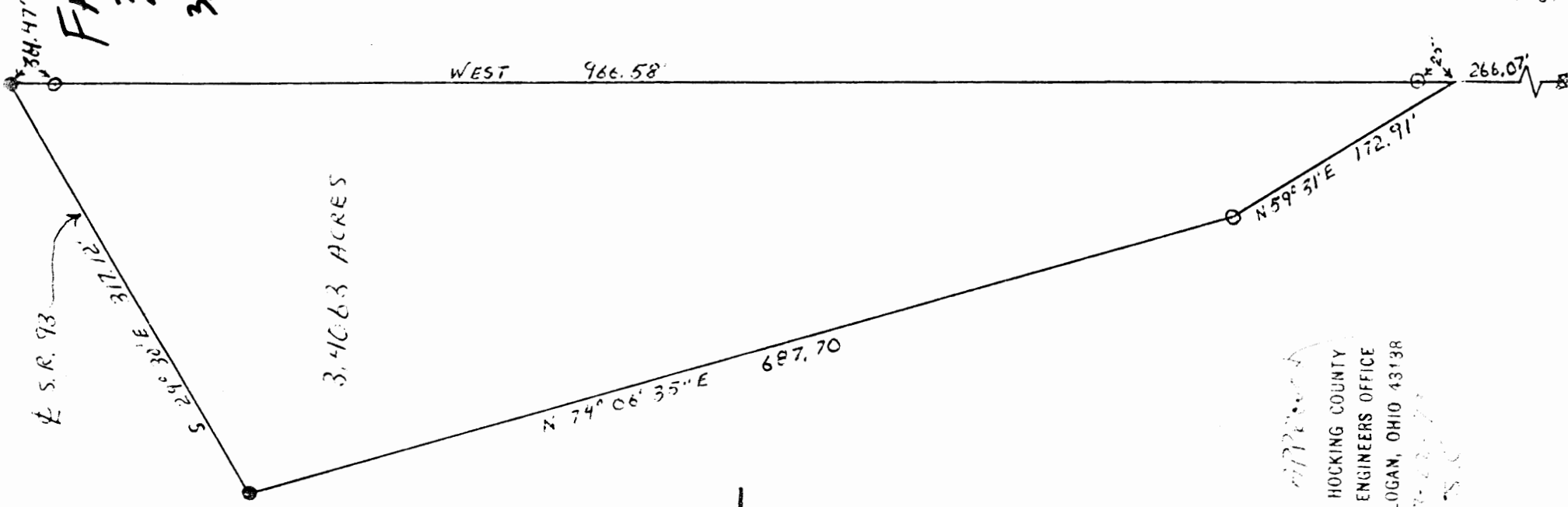


PART OF THE S.E. 1/4
OF SECTION 34,
T14N, R17W,
Falls Twp. Hocking Co.

3,406.3 ACRES

3,406.3 AC.

Falls ~~222~~
34



N

1" = 100'

O = IRON PIN

● = RAIL ROAD SPIKE

SURVEYED BY

George F. Seymour

5-60-14
SEAL

HOCKING COUNTY
ENGINEERS OFFICE
LOGAN, OHIO 43138

N.E. CORNER
S.E. 1/4
SEC. 34

~~Survey~~
~~Folder~~
#34

Being a part of the Southeast Quarter of Section 34, T 14 N, R 17 W, Falls Township, Hocking County, Ohio, and being more particularly described as follows:

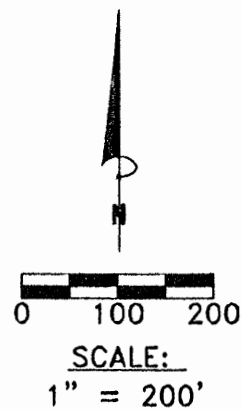
Beginning at a point where the North line of the Southeast Quarter of Section 34, T 14 N, R 17 W, intersects a run, said point being West 266.07 feet of the Northeast corner of said Southeast Quarter; thence, continuing with said North line West, passing iron pins at 25 feet and 932.11 feet, and going a total distance of 966.58 feet to a railroad spike in the center line of State Route 93; thence, with the center line of State Route 93, South $29^{\circ} 30'$ East 317.12 feet to a railroad spike; thence, leaving said State Route 93, and with the aforementioned run, North $74^{\circ} 06' 35''$ East 687.70 feet to an iron pipe; thence, North $59^{\circ} 31'$ East 172.91 feet to the place of beginning, containing 3.4063 acres, more or less, and being subject to all legal highways.

The above described tract was surveyed by George F. Seymour, Registered Surveyor No. 6044, March 21, 1973.

George F. Seymour 3-21-73
George F. Seymour
Registered Surveyor No. 6044

BASIS OF BEARINGS:

Bearings derived from monumentation found on the West line of the Northeast Quarter Section 34 as bearing North 08 degrees 37 minutes 33 seconds East and are for the determination of angles only.



County tax maps
Deeds as noted
Previous surveys

LEGEND

- Point
- ▲ 5/8" x 30" iron pin with 1-1/4" plastic ID cap stamped SEYMOUR & ASSOC. set
- △ 5/8" iron pin with 1-1/4" plastic ID cap stamped SEYMOUR & ASSOC. found
- 5/8" iron pin with ID cap stamped LPG-6344 found
- ⊙ 5/8" iron pin found
- ⊗ 1-1/2" iron pipe found
- ⊙ MAG nail set
- ⊙ MAG nail found
- ⊙ PK nail found
- Stone found
- 2-3/8" X 33- 1/2" Berntsen #A2Br30 Break-off Monument, with 3-1/4" aluminum cap, stamped Seymour & Associates 6044 found

Tammy Trout
O.R.181 Pg.315

HARSH FARMS PARTNERSHIP
Part Of O.R.78 Pg.386

Tract #2
±20.7520 acres

Tract #1
±15.1328 acres

Tract #3
±2.0047 acres

Harsh Farms Subdivision Phase 1
Plat Cabinet 2, Page 103 & 104

Edward Kilbarger et. al
O.R.372 Pgs. 455, 463, 470, 477, 484, 910

Dwight & Evelyn M. Davis
D.V.101 Pg.451

I HEREBY CERTIFY THAT THIS PLAT WAS PREPARED FROM AN ACTUAL FIELD SURVEY OF THE PREMISES IN DECEMBER OF 2006 AND FROM EXISTING PUBLIC RECORDS AND THAT SAID PLAT CORRECTLY SHOWS THE LIMITS OF THE PARCEL TO BE CONVEYED.

THIS CERTIFICATION WAS MADE BY ME ON THIS 6 DAY OF MARCH, 2007.

George F. Seymour

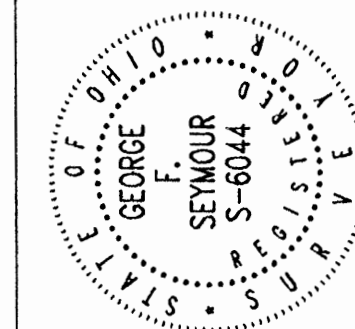
GEORGE F. SEYMOUR
OHIO PROFESSIONAL SURVEYOR NO. 6044

©2007 SEYMOUR & ASSOCIATES

Approved - Mathematically
Hocking County Engineer's Office

BY CW DATE 3-19-07

Seymour & Associates
630 West Hunter Street
Logan, Ohio 43738
740-365-4349
FAX: 740-365-5854
SURVEYING
ENGINEERING
email: seysur@hocking.net



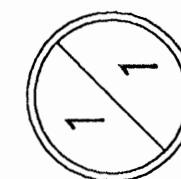
PLAT OF SURVEY

Being A Part Of The Northeast Quarter, Section 34, Township 14, North; Range 17, West
Of The Congress Lands East Of The Scioto River, Falls Township, Hocking County, State Of Ohio

Harsh Farms Partnership

REVISIONS

SHEET



DATE
12/18/06
SW
F27061

EXHIBIT "A"
15.1328 ACRE TRACT

Being a part of the tract of land that is now or formerly in the name of Harsh Farms Partnership, as recorded in Official Record 78 at page 386, Hocking County Recorder's Office, said tract being situated in the Northeast quarter of Section 34, T14N, R17W, Falls Township, Hocking County, State of Ohio and being more particularly described as follows:

Beginning for reference at a 5/8" iron pin with a 1 1/4" plastic identification cap stamped "Seymour & Associates" found on the Northwest corner of Section 34, Falls Township;

Thence along the North line of Section 34, South 82 degrees 14 minutes 29 seconds East a distance of 2,680.30 feet to a point;

Thence leaving the North line of Section 34, South 08 degrees 37 minutes 33 seconds West a distance of 1,245.00 feet to a 2-3/8" X 3 3/2" Berntsen #A2BR30 Break-Off Monument with a 3-1/4" aluminum cap stamped "Seymour & Associates 6044" found on the Southwest corner of Lot #6 of the Harsh Farms Subivision Phase I as recorded in Plat Cabinet 2 at pages 103 and 104, said point being the principle place of beginning of the tract herein described;

Thence along the South line of the Harsh Farms Subdivision Phase I, the following three courses:

1. South 84 degrees 31 minutes 21 seconds East a distance of 350.00 feet to a 5/8" iron pin with a 1 1/4" plastic identification cap stamped "Seymour & Associates" found;
2. North 69 degrees 13 minutes 47 seconds East a distance of 207.50 feet to a 5/8" iron pin with a 1 1/4" plastic identification cap stamped "Seymour & Associates" found, and;
3. North 79 degrees 41 minutes 56 seconds East a distance of 165.62 feet to a 5/8" iron pin with a 1 1/4" plastic identification cap stamped "Seymour & Associates" found;

Thence leaving the South line of the Harsh Farms Subdivision Phase I, South 01 degree 48 minutes 35 seconds East a distance of 357.36 feet to a 5/8" X 30" iron pin with a 1 1/4" plastic identification cap stamped "Seymour & Associates" set;

Thence South 88 degrees 10 minutes 25 seconds East, passing through a 5/8" X 30" iron pin with a 1 1/4" plastic identification cap stamped "Seymour & Associates" set at 212.85 feet going a total distance of 239.36 feet to a point in the center of the traveled portion of State Route 93;

Thence along the center of the traveled portion of State Route 93, the following two courses:

1. South 01 degree 56 minutes 12 seconds West a distance of 499.51 feet to a point, and;
2. With a curve to the left, having a delta of 07 degrees 17 minutes 18 seconds, the radius being 716.20 feet and the chord bearing South 01 degree 06 minutes 20 seconds East a distance of 91.04 feet to a point;

Thence leaving the center of the traveled portion of State Route 93, North 46 degrees 19 minutes 50 seconds West, passing through a 5/8" X 30" iron pin with a 1 1/4" plastic identification cap stamped "Seymour & Associates" set at 43.17 feet, going a total distance of 210.31 feet to a 5/8" X 30" iron pin with a 1 1/4" plastic identification cap stamped "Seymour & Associates" set;

Thence North 70 degrees 05 minutes 49 seconds West a distance of 109.84 feet to a 5/8" X 30" iron pin with a 1 1/4" plastic identification cap stamped "Seymour & Associates" set;

EXHIBIT "A"
15.1328 ACRE TRACT (Con't)

Thence South 89 degrees 43 minutes 32 seconds West a distance of 792.54 feet to a 5/8" x 30" iron pin with a 1 1/4" plastic identification cap stamped "Seymour & Associates" set on the Grantor's West line and the West line of the Northeast quarter of Section 34;


Thence along the Grantor's West line, North 08 degrees 37 minutes 33 seconds East a distance of 714.53 feet to the principle place of beginning containing 15.1328 acres, more or less, and subject to the right-of-way of State Route 93 and all easements of record;

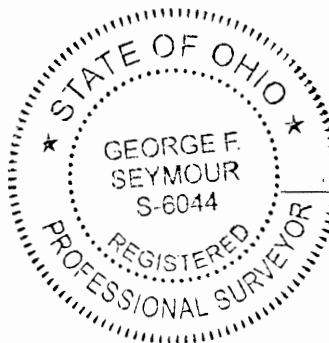
The bearings used in this description were based on monumentation found on the West line of the Northeast quarter of Section 34 as bearing, North 08 degrees 37 minutes 33 seconds East and are for the determination of angles only.

This description was prepared from a survey by George F. Seymour, Ohio Professional Surveyor No. 6044, in December of 2006.

Approved - Mathematically
Hocking County Engineer's Office

BY CW DATE 3-19-07


George F. Seymour, P.S. 6044



3-6-07
Date

EXHIBIT "A"
20.7520 ACRE TRACT

Being a part of the tract of land that is now or formerly in the name of Harsh Farms Partnership, as recorded in Official Record 78 at page 386, Hocking County Recorder's Office, said tract being situated in the Northeast quarter of Section 34, T14N, R17W, Falls Township, Hocking County, State of Ohio and being more particularly described as follows:

Beginning for reference at a 5/8" iron pin with a 1 1/4" plastic identification cap stamped "Seymour & Associates" found on the Northwest corner of Section 34, Falls Township;

Thence along the North line of Section 34, South 82 degrees 14 minutes 29 seconds East a distance of 2,680.30 feet to a point;

Thence leaving the North line of Section 34, South 08 degrees 37 minutes 33 seconds West a distance of 1,959.53 feet to a 5/8" X 30" iron pin with a 1 1/4" plastic identification cap stamped "Seymour & Associates" set for the principle place of beginning of the tract herein described;

Thence leaving the Grantor's West line, and the West line of the Northeast quarter, North 89 degrees 43 minutes 32 seconds East at 792.54 feet to a 5/8" X 30" iron pin with a 1 1/4" plastic identification cap stamped "Seymour & Associates" set;

Thence South 70 degrees 05 minutes 49 seconds East a distance of 109.84 feet to a 5/8" X 30" iron pin with a 1 1/4" plastic identification cap stamped "Seymour & Associates" set;

Thence South 46 degrees 19 minutes 50 seconds East, passing through a 5/8" X 30" iron pin with a 1 1/4" plastic identification cap stamped "Seymour & Associates" set at 167.14 feet, going a total distance of 210.31 feet to a point in the center of the traveled portion of State Route 93;

Thence along the center of the traveled portion of State Route 93, the following four courses:

1. With a curve to the left, having a delta of 20 degrees 32 minutes 08 seconds, the radius being 716.20 feet and the chord bearing South 15 degrees 01 minute 03 seconds East a distance of 255.32 feet to a point;
2. South 24 degrees 38 minutes 42 seconds East a distance of 244.86 feet to a point;
3. With a curve to the right, having a delta of 04 degrees 14 minutes 01 second, the radius being 1,431.94 feet and the chord bearing South 24 degrees 49 minutes 38 seconds East a distance of 105.78 feet to a point, and;
4. South 21 degrees 42 minutes 14 seconds East a distance of 143.70 feet to a point on the South line of the Northeast quarter of Section 34, and the Grantor's South line;

Thence leaving the center of the traveled portion of State Route 93, along the Grantor's South line and the South line of the Northeast quarter, North 82 degrees 12 minutes 14 seconds West, passing through a 5/8" iron pin with a 1 1/4" plastic identification cap stamped "Seymour & Associates" found at 34.47 feet, going a total distance of 1,430.65 feet to a 5/8" iron pin with a 1 1/4" plastic identification cap stamped "Seymour & Associates" found on the Southwest corner of the Northeast quarter and the Grantor's Southwest corner;

Thence along the Grantor's West line, and the West line of the Northeast quarter, North 08 degrees 37 minutes 33 seconds East a distance of 691.24 feet to the principle place of beginning containing 20.7520 feet, more or less, and subject to the right-of-way of State Route 93 and all easements of record;

The bearings used in this description were based on monumentation found on the West line of the Northeast quarter of Section 34 as bearing, North 08 degrees 37 minutes 33 seconds East and are for the determination of angles only.

This description was prepared from a survey by George F. Seymour, Ohio Professional Surveyor No. 6044, in December of 2006.


George F. Seymour, P.S. 6044



3-6-07

Date

Approved - Mathematically
Hocking County Engineer's Office

BY CW DATE 3-19-07

EXHIBIT "A"
2.0047 ACRE TRACT

Being a part of the tract of land that is now or formerly in the name of Harsh Farms Partnership, as recorded in Official Record 78 at page 386, Hocking County Recorder's Office, said tract being situated Northeast quarter of Section 34, T14N, R17W, Falls Township, Hocking County, State of Ohio and being more particularly described as follows:

Beginning for reference at a 5/8" iron pin with a 1 1/4" plastic identification cap stamped "Seymour & Associates" found on the Northwest corner of Section 34, Falls Township;

Thence along the North line of Section 34, South 82 degrees 14 minutes 29 seconds East a distance of 2,680.30 feet to a point;

Thence leaving the North line of Section 34, South 08 degrees 37 minutes 33 seconds West a distance of 1,245.00 feet to a 2 3/8" X 33 1/2" Berntsen # A2BR30 Break-Off Monument with a 3 1/4" aluminum cap stamped "Seymour & Associates-6044" found on the Southwest corner of the Harsh Farms Subdivision Phase I as recorded in Plat Cabinet 2 at pages 103 and 104;

Thence along the South line of the Harsh Farms Subdivision Phase I, South 84 degrees 31 minutes 21 seconds East a distance of 350.00 feet to a 5/8" iron pin with a 1 1/4" plastic identification cap stamped "Seymour & Associates" found;

Thence North 69 degrees 13 minutes 47 seconds East a distance of 207.50 feet to a 5/8" iron pin with a 1 1/4" plastic identification cap stamped "Seymour & Associates" found;

Thence North 79 degrees 41 minutes 56 seconds East a distance of 165.62 feet to a 5/8" iron pin with a 1 1/4" plastic identification cap stamped "Seymour & Associates" found for the principle place of beginning of the tract herein described;

Thence continuing along the South line of the Harsh Farms Subdivision Phase I, South 84 degrees 31 minutes 21 seconds East, passing through 2 3/8" X 33 1/2" Berntsen #A2BR30 Break-Off Monument with a 3 1/4" aluminum cap stamped "Seymour & Associates-6044" found at 233.21 feet, going a total distance of 263.21 feet to a point in the center of the traveled portion of State Route 93;

Thence along the center of the traveled portion of State Route 93, South 01 degree 56 minutes 12 seconds West a distance of 339.88 feet to a point;

Thence leaving the center of the traveled portion of State Route 93, North 88 degrees 10 minutes 25 seconds West, passing through a 5/8" X 30" iron pin with a 1 1/4" plastic identification cap stamped "Seymour & Associates" set at 26.51 feet, going a total distance of 239.36 feet to a 5/8" X 30" iron pin with a 1 1/4" plastic identification cap stamped "Seymour & Associates" set;

Thence North 01 degree 48 minutes 35 seconds West a distance of 357.36 feet to the principle place of beginning containing 2.0047 acres, more or less, and subject to the right-of-way of State Route 93 and all easements of record;

The bearings used in this description were based on monumentation found on the West line of the Northeast quarter of Section 34 as bearing, North 08 degrees 37 minutes 33 seconds East and are for the determination of angles only.

This description was prepared from a survey by George F. Seymour, Ohio Professional Surveyor No. 6044, in December of 2006.

George F. Seymour
George F. Seymour, P.S. 6044



Approved - Mathematically
Hocking County Engineer's Office

BY CW DATE 3-19-07

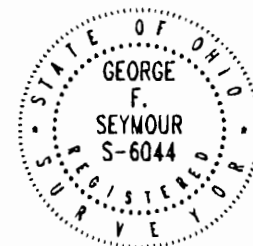
3-6-07
Date

Seymour & Associates

830 West Hunter Street
Logan, Ohio 43138
740-385-4349
FAX: 740-385-5954
**SURVEYING
ENGINEERING**
email: seysurv@hocking.net

PLAT OF SURVEY

SITUATED IN THE STATE OF OHIO,
COUNTY OF HOCKING,
TOWNSHIP OF FALLS
AND BEING A PART OF THE NE 1/4 OF
SECTION 34, T-14-N, R-17-W,



DATE:
07-18-06

DRAWN BY:
SBW

JOB #:
F340601

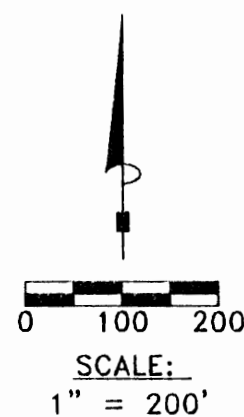
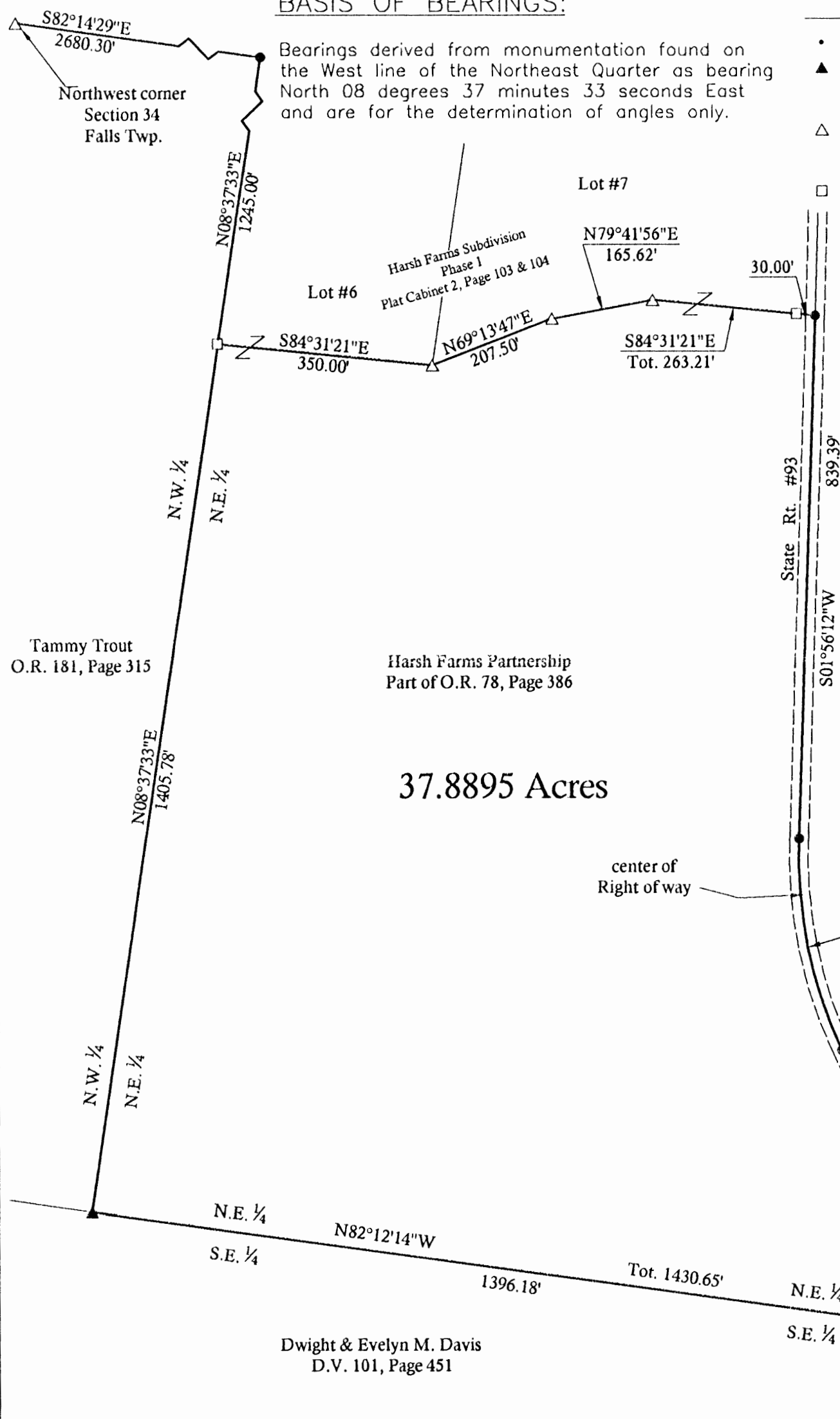
FOR: Harsh Farms Partnership

BASIS OF BEARINGS:

Bearings derived from monumentation found on the West line of the Northeast Quarter as bearing North 08 degrees 37 minutes 33 seconds East and are for the determination of angles only.

LEGEND

- Point
- ▲ 5/8" x 30" iron pin with 1-1/4" plastic ID cap stamped SEYMOUR & ASSOC. set
- △ 5/8" iron pin with 1-1/4" plastic ID cap stamped SEYMOUR & ASSOC. found
- 2-3/8" x 33-1/2" Berntsen #A2Br30 break-off monument with 3-1/4" aluminum cap stamped Seymour & Associates 6044 Found



Harsh Farms Partnership
O.R. 78, Page 386

REFERENCES:

County tax maps
Deeds as noted
Previous surveys

Central Angle 27°49'25"
Radius Length 716.20'
Arc Length 347.80'
Chord Length 344.39'
Chord Bearing S11°22'24"E

Central Angle 04°14'01"
Radius Length 1431.94'
Arc Length 105.80'
Chord Length 105.78'
Chord Bearing S24°49'38"E

I HEREBY CERTIFY THAT THIS PLAT WAS PREPARED FROM AN ACTUAL FIELD SURVEY OF THE PREMISES IN JUNE OF 2006 AND FROM EXISTING PUBLIC RECORDS AND THAT SAID PLAT CORRECTLY SHOWS THE LIMITS OF THE PARCEL TO BE CONVEYED.

THIS CERTIFICATION WAS MADE BY ME ON THIS 18 DAY OF JULY, 2006.

George F. Seymour
GEORGE F. SEYMOUR
OHIO PROFESSIONAL SURVEYOR NO. 6044

©2006 SEYMOUR & ASSOCIATES

Approved - Mathematically
Hocking County Engineer's Office

BY CW DATE 7-21-06

EXHIBIT "A"
37.8895 ACRE TRACT

Being a part of the tract of land that is now or formerly in the name of Harsh Farms Partnership, as recorded in Official Record 78 at page 386, Hocking County Recorder's Office, said tract being part of the Northeast quarter of Section 34, T14N, R17W, Falls Township, Hocking County, State of Ohio, and being more particularly described as follows:

Beginning for reference at a 5/8" X 30" iron pin with a 1 1/4" plastic identification cap stamped "Seymour & Associates" found at the Northwest corner of Section 34, T14N, R17W;

Thence South 82 degrees 14 minutes 29 seconds East a distance of 2,680.30 feet to a point;

Thence South 08 degrees 37 minutes 33 seconds West a distance of 1,245.00 feet to a 2 3/8" X 33 1/2" Berntsen #A2Br30 Break-Off Monument with a 3 1/4" Aluminum Cap stamped "Seymour & Associates-6044" found for the principle place of beginning of the tract herein described said monument being on the Southwest corner of the Harsh Farms Subdivision Phase I recorded in Plat Cabinet 2 at pages 103 and 104;

Thence along the South line of the Harsh Farms Subdivision Phase I, the following four courses:

1. South 84 degrees 31 minutes 21 seconds East a distance of 350.00 feet to a 5/8" X 30" iron pin with a 1 1/4" plastic identification cap stamped "Seymour & Associates" found;
2. North 69 degrees 13 minutes 47 seconds East a distance of 207.50 feet to a 5/8" X 30" iron pin with a 1 1/4" plastic identification cap stamped "Seymour & Associates" found;
3. North 79 degrees 41 minutes 56 seconds East a distance of 165.62 feet to a 5/8" X 30" iron pin with a 1 1/4" plastic identification cap stamped "Seymour & Associates" found, and;
4. South 84 degrees 31 minutes 21 seconds East, passing through a 2 3/8" X 33 1/2" Berntsen #A2Br30 Break-Off Monument with a 3 1/4" Aluminum Cap stamped "Seymour & Associates-6044" found at 233.21 feet, going a total distance of 263.21 feet to a point in the center of the traveled portion of State Route 93;

Thence along the center of the traveled portion of State Route 93, the following five courses:

1. South 01 degree 56 minutes 12 seconds West a distance of 839.39 feet to a point;
2. With a non-tangent curve to the left, having a central angle of 27 degrees 49 minutes 25 seconds, the radius being 716.20 feet, the arc length being 347.80 feet and the chord bearing South 11 degrees 22 minutes 24 seconds East a distance of 344.39 feet to a point;
3. South 24 degrees 38 minutes 42 seconds East a distance of 244.86 feet to a point;
4. With a non-tangent curve to the right, having a central angle of 04 degrees 14 minutes 01 second, the radius being 1,431.94 feet, the arc length being 105.80 feet and the chord bearing South 24 degrees 49 minutes 38 seconds East a distance of 105.78 feet to a point, and;
5. South 21 degrees 42 minutes 14 seconds East a distance of 143.70 feet to a point on the South line of the Northeast quarter of Section 34;

Thence leaving the center of the traveled portion of said road, along the South line of the Northeast quarter and the Grantor's South line, North 82 degrees 12 minutes 14 seconds West, passing through a 5/8" X 30" iron pin with a 1 1/4" plastic identification cap stamped "Seymour & Associates" set at 34.47 feet, going a total distance of 1,430.65 feet to a 5/8" X 30" iron pin with a 1 1/4" plastic identification cap stamped "Seymour & Associates" set on the Grantor's Southwest corner;

EXHIBIT "A"
37.8895 ACRE TRACT (Con't)

Thence along the West line of the Northeast quarter of Section 34, North 08 degrees 37 minutes 33 seconds East a distance of 1,405.78 feet to the principle place of beginning containing 37.8895 acres, more or less, and subject to the right-of-way of State Route 93 and all easements of record.

The bearings used in this survey were derived from monumentation found on the West line of the Northeast quarter as bearing, North 08 degrees 37 minutes 33 seconds East and are for the determination of angles only.

The above described tract was surveyed by George F. Seymour, Ohio Professional Surveyor No. 6044, in June of 2006.



George F. Seymour
George F. Seymour, P.S. 6044

7-18-06
Date

Approved - Mathematically
Hocking County Engineer's Office
BY CW DATE 7-21-06

R. 63, ST. 1200
VOL. 138, P. 24

BEING A PART OF FRAC. LOT NO. 3 OF SEC. 3A,
FALLS TWP., AND PART OF FRAC. LOT NO. 2 OF
SEC. 35, FALLS TWP., T-14N, R-17W, ADAMS CO.,
OHIO

NOTE: CURVED BEARINGS ARE BASED ON THE LINE COMMON TO SEC-
TIONS 34 & 35 AS RUNNING S82°25'55"W.

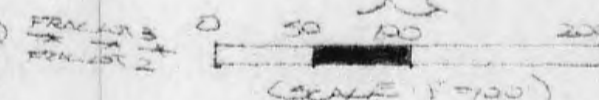
REFERENCES:

COUNTY TAX PLATS
SURVEYS OF RECORD
1880 PLAT RECORDS
DEEDS (AS NOTED)

Reviewed - Mathematically
by County Engineer's Office

6-15-01

R. WOLF, JR.
VOL. 167, P. 12
VOL. 210, P. 22



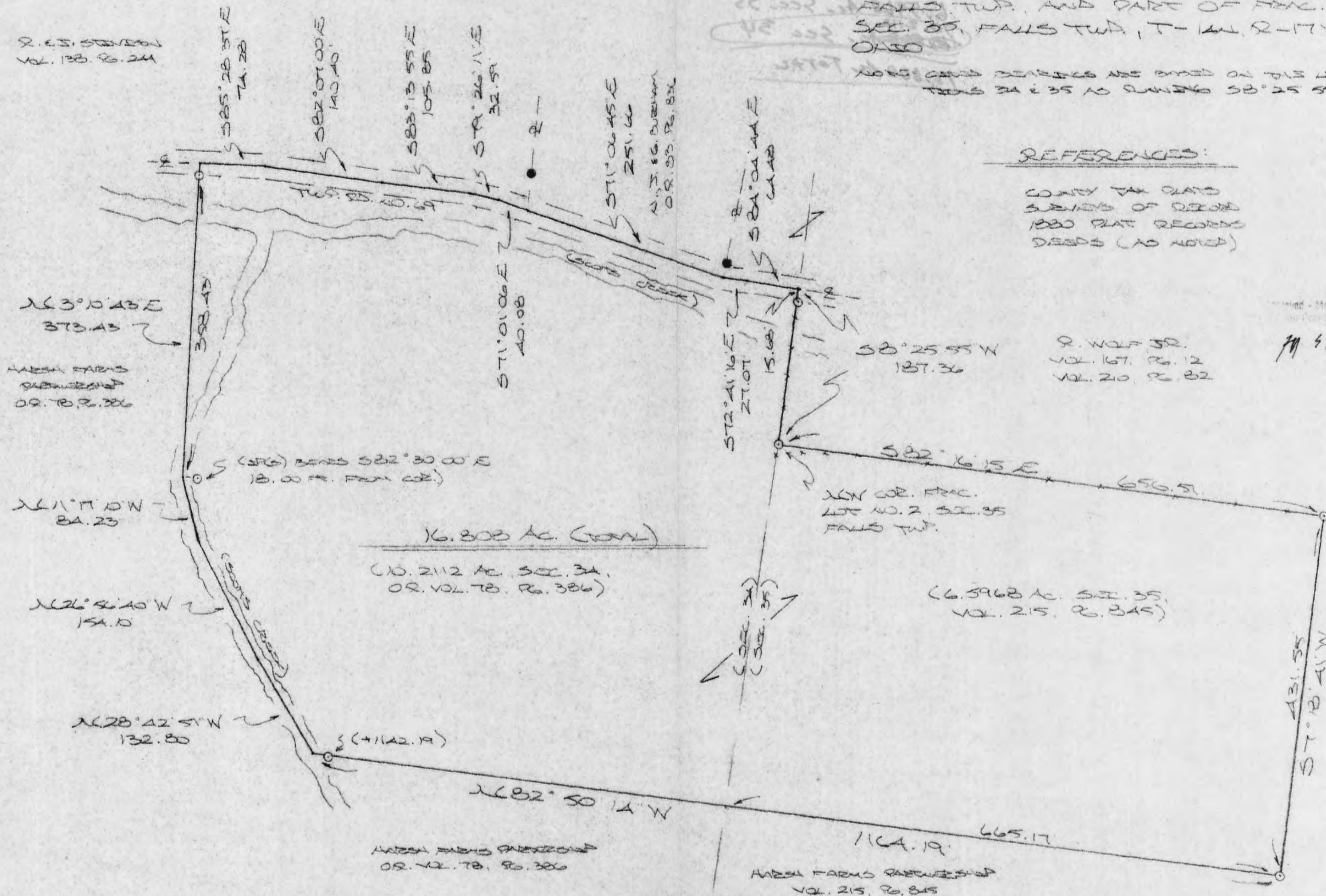
○ - 1/8\" x 100\" IRON PIN (S) W/ED CAP
● - IRON PIN (NO.)

ADAMS FARM PARTNERSHIP -
SHEP
VOL. 215, P. 845



PLAT PREPARED FROM SURVEY MADE
MAY 31, 2001, BY:

OHIO REGISTERED SURVEYOR NO. 6803



16.803 AC. (TOTAL)

(10.2112 AC. SEC. 34,
OR. VOL. 78, P. 386)

(6.5968 AC. SEC. 35,
VOL. 215, P. 845)

ADAMS FARM PARTNERSHIP
OR. VOL. 78, P. 386

ADAMS FARM PARTNERSHIP
VOL. 215, P. 845

SEC 34
SEC 35

DESCRIPTION OF SURVEY FOR MR. JIM KILBARGER

Being a part of tracts of land last transferred in Vol. 78, Pg. 386, Hocking Co. Official Records, and Vol. 215, Pg. 845, Hocking Co. Deed Records, situated respectively, in Frac. Lot No. 3 of Sec. 34, Falls Twp., and in Frac. Lot No. 2 of Sec. 35, Falls Twp., T-14N, R-17W, Hocking Co., Ohio, and being more particularly described as follows:

Beginning at an iron pin set on the NW corner of said Frac. Lot No. 2 of Sec. 35;
Thence, with the north line of said Fractional Lot, S 82 degrees 16' 15" E a distance of 656.51 ft. to an iron pin set;

Thence with new lines the following two (2) courses:

1) S 7 degrees 18' 41" W a distance of 431.55 ft. to an iron pin set;
2) N 82 degrees 50' 14" W, passing a point on the east line of Sec. 34 at 665.17 ft. and passing an iron pin set at 1142.19 ft., going a total distance of 1164.19 ft. to a point in the approximate centerline of Scott's Creek;

Thence with the approximate centerline of said creek the following three (3) courses:

1) N 28 degrees 42' 51" W a distance of 132.80 ft. to a point;
2) N 26 degrees 56' 40" W a distance of 154.10 ft. to a point;
3) N 11 degrees 17' 10" W a distance of 84.23 ft. to a point, said point being referenced by an iron pin set which bears S 82 degrees 30' 00" E a distance of 18.00 ft.;
Thence, leaving said creek, N 3 degrees 10' 43" E, passing an iron pin set at 358.43 ft., going a total distance of 373.43 ft. to a point in the center of Twp. Rd. No. 69;
Thence with the center of said Twp. road the following eight (8) courses:
1) S 85 degrees 28' 37" E a distance of 74.28 ft. to a point;
2) S 82 degrees 07' 00" E a distance of 140.40 ft. to a point;
3) S 83 degrees 13' 55" E a distance of 105.85 ft. to a point;
4) S 79 degrees 26' 11" E a distance of 32.59 ft. to a point;
5) S 71 degrees 01' 06" E a distance of 40.08 ft. to a point;
6) S 71 degrees 06' 45" E a distance of 251.66 ft. to a point;
7) S 72 degrees 41' 16" E a distance of 27.07 ft. to a point;
8) S 84 degrees 04' 44" E a distance of 64.48 ft. to a point on the west line of Sec. 35;

Thence, with said west line, S 8 degrees 25' 55" W, passing an iron pin set at 15.68 ft., going a total distance of 187.36 ft. to the place of beginning, containing 10.2112 acres in Sec. 34, part of O.R. Vol. 78, Pg. 386, and 6.5968 acres in Sec. 35, part of Vol. 25, Pg. 845, making a total of 16.808 acres, more or less, and being subject to the right-of-way of Twp. Rd. No. 69 and all valid easements.


Cited bearings are based on the line common to sections 34 and 35 as running S 8 degrees 25' 55" W.

All iron pins described as being set are 5/8" X 30" with an attached plastic identification cap.

The above description is the result of an actual survey made by Michael P. Berry, Ohio Registered Surveyor No. 6803, on May 31, 2001.

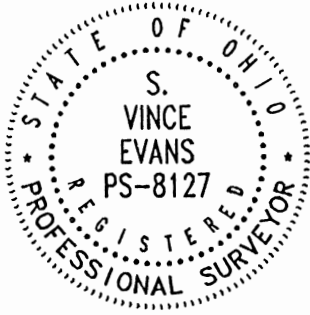
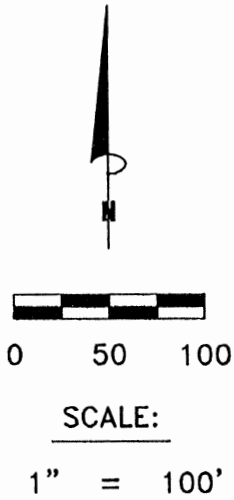
Approved - Mathematically
Hocking County Engineer's Office

BY 74 SS - DATE 6-20-01


Michael P. Berry #6803

**PLAT OF A 2.000 ACRE TRACT AND A 15 FEET WIDE BY
651.92 FEET LONG CENTERLINE EASEMENT OF INGRESS AND EGRESS**

Situated in Falls Township, Hocking County, Ohio; being part of Fractional Lot 3 of Section 34, Township 14, Range 17.



LEGEND:

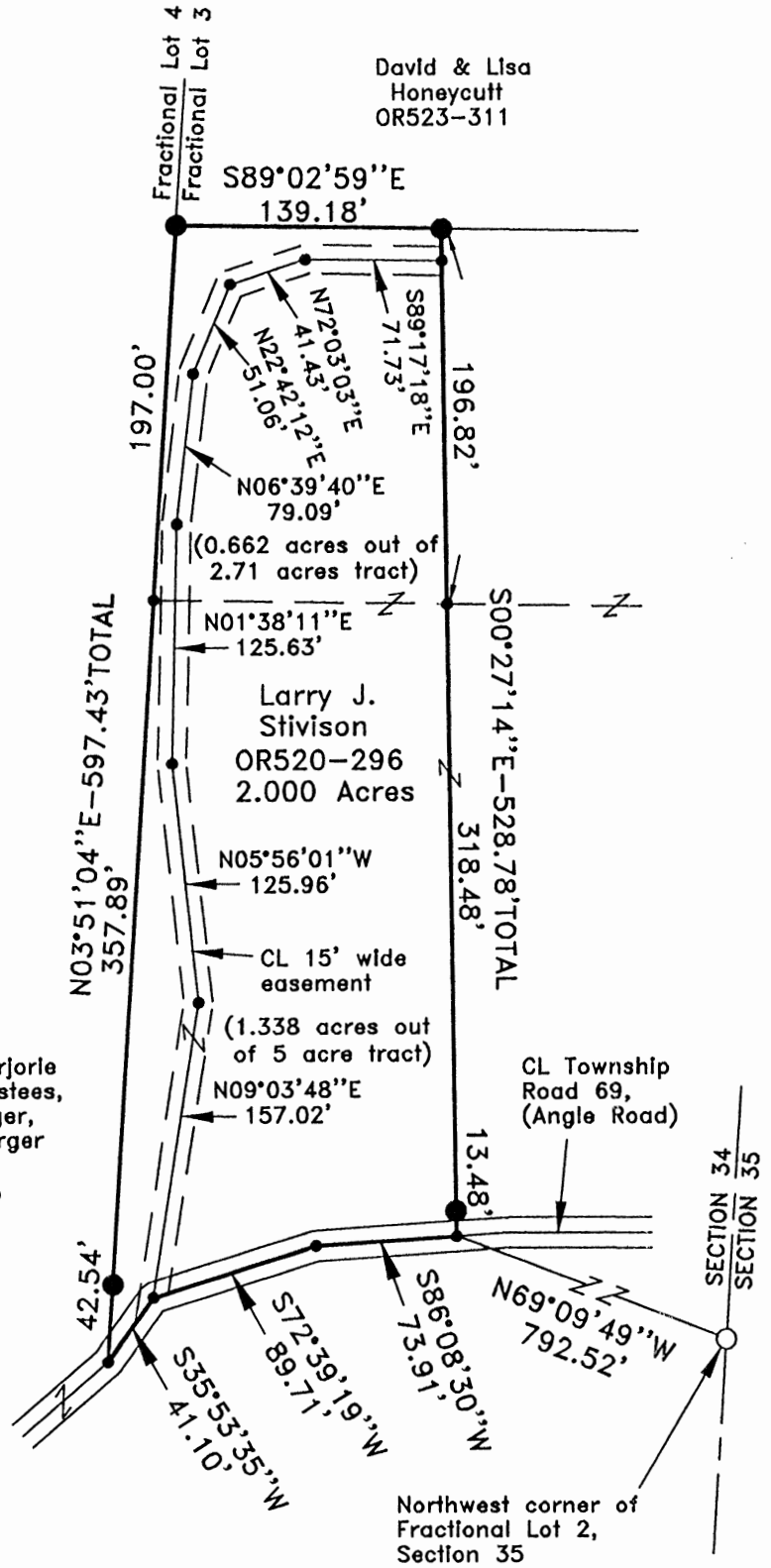
- Point
- 5/8" iron pin with 1-1/4" plastic ID cap stamped MPB-6803 found
- 5/8"x30" iron pin with 1-1/4" plastic ID cap stamped SVE-8127 set

REFERENCES:

Tax maps
Deed descriptions
Previous surveys
Existing monumentation
Existing public road

Edward & Marjorie Kilbarger, Trustees,
James Kilbarger,
Anthony Kilbarger
OR411-61,
OR372-455

APPROVED MATHEMATICALLY
Hocking County Engineer's Office
By: CW Date: M. 10 D. 23 Y. 2014



REFERENCE BEARING:

The west line Fractional Lot 3 as North 03 degrees 51 minutes 04 seconds East. Bearings are based upon an assumed meridian and are to denote angles only.

CERTIFICATION:

I hereby certify that an actual survey was made under my supervision of the premises shown hereon on the 20th day of October, 2014 and that the plat is a correct representation of the premises as described by said survey.

S. Vince Evans
Registered Surveyor No. 8127

Survey by: S. Vince Evans Surveying – S. Vince Evans P.S. 8127
64103 Woodgeard Road, Creola, Ohio 45622
Phone (740) 380-3884
FAX (740) 596-5831

SURVEY DESCRIPTION OF A 2.000 ACRE TRACT

Situated in Falls Township, Hocking County, Ohio; being part of Fractional Lot 3 of Section 34, Township 14, Range 17; and being more particularly described as follows:

Being part of a 2.71 acre tract and part of a 5 acre tract as described in Volume OR520, Page 296 to Larry J. Stivison.

Commencing at a 5/8" iron pin with 1-1/4" plastic ID cap stamped MPB-6803 found at the Northwest corner of Fractional Lot 2 of Section 35;

Thence with a random line, North 69 degrees 09 minutes 49 seconds West a distance of 792.52 feet to a Point in the centerline of Township Road 69 (Angle Road), and being the point of **Beginning** of the tract of land to be described;

Thence with the centerline of Township Road 69 (Angle Road), the following bearings and distances:

- 1) South 86 degrees 08 minutes 30 seconds West a distance of 73.91 feet to a Point;
- 2) South 72 degrees 39 minutes 19 seconds West a distance of 89.71 feet to a Point;
- 3) South 35 degrees 53 minutes 35 seconds West a distance of 41.10 feet to a Point on the west line of Fractional Lot 3;

Thence leaving the centerline of Township Road 69 (Angle Road) and with the west line of Fractional Lot 3, North 03 degrees 51 minutes 04 seconds East a distance of 597.43 feet to a 5/8" iron pin set, passing a 5/8" iron pin set at a distance of 42.54 feet and passing a Point on the south line of said 2.71 acre tract at a distance of 400.43 feet;

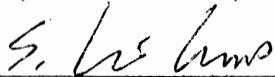
Thence leaving the west line of Fractional Lot 3, South 89 degrees 02 minutes 59 seconds East a distance of 139.18 feet to a 5/8" iron pin set;

Thence South 00 degrees 27 minutes 14 seconds East a distance of 528.78 feet, passing a Point on the south line of said 2.71 acre tract at a distance of 196.82 feet, and passing a 5/8" iron pin set at a distance of 515.30 feet, to the point of beginning and containing 2.000 acres (0.662 acres out of said 2.71 acre tract and 1.338 acres out of said 5 acre tract), more or less, subject to any public or private easements of record.

The above 2.000 acre survey was based upon information obtained from tax maps, deed descriptions, previous surveys, existing monumentation, and an existing public road. The reference bearing for this survey is the west line of Fractional Lot 3 as North 03 degrees 51 minutes 04 seconds East. Bearings are based upon an assumed meridian and are to denote angles only.

All iron pins set by this survey are 5/8" by 30" and are capped by a 1-1/4" plastic identification cap stamped "SVE-8127".

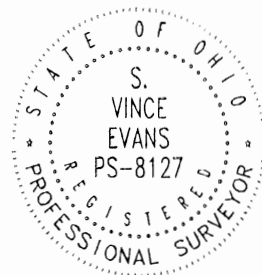
The above described property was surveyed by S. Vince Evans, Ohio Registered Surveyor No. 8127, on October 20, 2014.



S. Vince Evans, P. S. 8127

Survey by: S. Vince Evans Surveying
S. Vince Evans, P. S. 8127
64103 Woodgeard Road
Creola, Ohio 45622
Phone (740) 380-3884
FAX (740) 596-5831

APPROVED MATHEMATICALLY
Hocking County Engineer's Office
By: CW Date: M. 10 D. 23 Y. 2014



**SURVEY DESCRIPTION OF A 15 FEET WIDE BY 651.92 FEET LONG
CENTERLINE EASEMENT OF INGRESS AND EGRESS**

Situated in Falls Township, Hocking County, Ohio; being part of Fractional Lot 3 of Section 34, Township 14, Range 17; and being more particularly described as follows:

Being part of a 2.71 acre tract and part of a 5 acre tract as described in Volume OR520, Page 296 to Larry J. Stivison.

Commencing at a 5/8" iron pin with 1-1/4" plastic ID cap stamped MPB-6803 found at the Northwest corner of Fractional Lot 2 of Section 35;

Thence with a random line, North 69 degrees 09 minutes 49 seconds West a distance of 792.52 feet to a Point in the centerline of Township Road 69 (Angle Road);

Thence with the centerline of Township Road 69 (Angle Road), South 86 degrees 08 minutes 30 seconds West a distance of 73.91 feet to a Point;

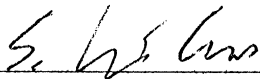
Thence with the centerline of Township Road 69 (Angle Road), South 72 degrees 39 minutes 19 seconds West a distance of 89.71 feet to a Point, and being the point of **Beginning** of the 15 feet wide centerline easement to be described;

Thence with the centerline of said easement, the following bearings and distances:

- 1) North 09 degrees 03 minutes 48 seconds East a distance of 157.02 feet to a Point;
- 2) North 05 degrees 56 minutes 01 seconds West a distance of 125.96 feet to a Point;
- 3) North 01 degrees 38 minutes 11 seconds East a distance of 125.63 feet to a Point;
- 4) North 06 degrees 39 minutes 40 seconds East a distance of 79.09 feet to a Point;
- 5) North 22 degrees 42 minutes 12 seconds East a distance of 51.06 feet to a Point;
- 6) North 72 degrees 03 minutes 03 seconds East a distance of 41.43 feet to a Point;
- 7) South 89 degrees 17 minutes 18 seconds East a distance of 71.73 feet to a Point and being the end of said 15 feet wide centerline easement, subject to any public or private easements of record.

The above easement survey was based upon information obtained from tax maps, deed descriptions, previous surveys, existing monumentation, and an existing public road. The reference bearing for this survey is the west line of Fractional Lot 3 as North 03 degrees 51 minutes 04 seconds East. Bearings are based upon an assumed meridian and are to denote angles only.

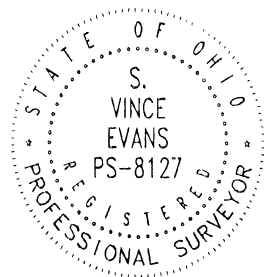
The above described easement was surveyed by S. Vince Evans, Ohio Registered Surveyor No. 8127, on October 20, 2014.



S. Vince Evans, P. S. 8127

Survey by: S. Vince Evans Surveying
S. Vince Evans, P. S. 8127
64103 Woodgeard Road
Creola, Ohio 45622
Phone (740) 380-3884
FAX (740) 596-5831

APPROVED MATHEMATICALLY
Hocking County Engineer's Office
By: CW Date: M. 10 D. 23 Y. 2014



Harsh Farms Subdivision
Plat Cabinet 2
Pages 103 & 104

David and Lisa
Honeycutt, Trustees
Official Rec. 554, Page 721

Chad M. &
Dawn M. Jensen
Official Rec. 635, Page 471

Trout Farms LLC
Official Rec. 600
Page 412, 419
Lot No. 7

Trout Farms LLC
Official Rec. 600
Page 412

APPROVED FOR RECORDATION
Hocking County Recorder's Office
By: CW Date: M. 3. D. 24. Y. 2020

TRACT No. 2
12.461 Acres

TRACT No. 1
30.946 Acres

Edward & Marjorie Kilbarger, Trustees,
James Kilbarger,
Anthony Kilbarger
Official Rec. 411, Page 61,
Official Rec. 372, Page 455

Richard & Jamie L.
Riggs, Trustees
Official Rec. 155, Page 547

No.	Bearing	Distance
1	N 35°20'48" E	41.10'
2	N 72°06'32" E	89.71'
3	N 85°35'43" E	73.91'
4	N 87°21'59" E	63.63'

0 100 200 400
Scale: 1" = 200'

REFERENCES:
Tax Maps
Previous Surveys
Deeds as Noted

(XXXX.XX) are Fractional Lot
dimensions as shown and are for
Fractional Lot acreage calculations
only within Tracts 1 and 2 and are
not to be construed as an integral
part of this survey.

POINT OF
BEGINNING
Tract 1
REFERENCE POINT
S.E. Cor. of the N.E.
1/4 of Sec. 34, Twp.
14, R. 17.

I hereby certify that this plat was prepared
from an actual field survey of the premises
in November of 2019 and from existing
public records and that said plat correctly
shows the limits of the parcel to be
conveyed.

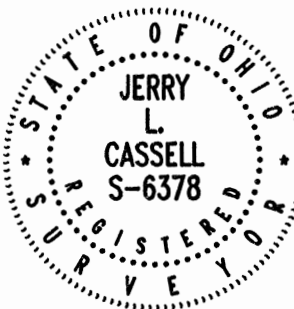
This certification was made by me on
this 20th day of March, 2020.

Jerry L. Cassell
Ohio Professional Surveyor No. 6378

LEGEND

- 5/8" iron pin set 30" in length with a 1 1/4" plastic ID cap inscribed "CASSELL S-6378"
- ⊗ 5/8" iron pin found with plastic ID cap inscribed "SVE-8127"
- 5/8" Iron pin found
- Point
- Fence post

NOTE:
The bearing system for this plat is based
on evidence found on the South line of the
N.E. 1/4 of Section 34 and bears N 87°
06' 18" W and is for the determination of
angles only.



PLAT OF SURVEY

Situated in the State of Ohio, County of Hocking,
Township of Falls and being a part of a parcel of
land conveyed to Edward and Marjorie Kilbarger,
Trustees, James Kilbarger and Anthony Kilbarger in
Official Record 411, Page 61 and Official Record 372,
Page 455 and being a part of the Northeast Quarter
of Section 34, Township 14, Range 17.

FOR:
Tony Kilbarger

BY:
Jerry L. Cassell

DATE:
Feb. 14, 2020

PROJ. NO.:
H0090519



CASSELL &
ASSOCIATES, LLC
PROFESSIONAL
LAND SURVEYING

20525 Buena Vista Road Rockbridge, Ohio 43149
(740) 969-0024

DESCRIPTION OF A 12.461 ACRE PARCEL

Situated in the State of Ohio, County of Hocking, Township of Falls and being a part of a parcel of land conveyed to Edward and Marjorie Kilbarger, Trustees, James Kilbarger and Anthony Kilbarger (hereinafter referred to as "Grantor") in Official Record 411, Page 61 and Official Record 372, Page 455 and being a part of the Northeast Quarter of Section 34, Township 14, Range 17 and being more particularly described as follows:

Commencing for reference at a point at the Southeast corner of the Northeast quarter of Section 34;

Thence N 87° 06' 18" W through the Grantor's lands, the Northerly property line of a parcel of land conveyed to Richard and Jamie L. Riggs, Trustees in Official Record 155, Page 547 and along the South line of the Northeast quarter of Section 34 a distance of 1222.40 feet to a point, said point being a property corner of the Grantor, the Southeasterly property line of a parcel of land conveyed to Trout Farms LLC in Official Record 600, Page 412, the Northwesterly property corner of the aforementioned Riggs parcel and on centerline of State Route 93 (passing an iron pin set at 34.98 feet, a 5/8 inch iron pin found at 281.07 feet and a 5/8 inch iron pin found at 1187.93 feet);

Thence along the centerline of State Route 93, the Grantor's Westerly property line and the Easterly property line of the aforementioned Trout Farms parcel the following five (5) courses:

- 1) N 26° 36' 15" W a distance of 55.66 feet to a point;
- 2) With a curve to the left having a delta angle of 03° 20' 53", a radius of 3150.09 feet, and a length of curve of 184.08 feet a chord bearing N 28° 16' 42" W and a chord distance of 184.05 feet to a point;
- 3) N 29° 57' 09" W a distance of 234.12 feet to a point;
- 4) With a curve to the right having a delta angle of 27° 04' 17", a radius of 805.28 feet, and a length of curve of 380.48 feet a chord bearing N 16° 25' 00" W and a chord distance of 376.96 feet to a point;
- 5) N 02° 52' 51" W a distance of 322.79 feet to a point, said point being the **TRUE POINT OF BEGINNING** for the parcel herein described;

Thence continuing N 02° 52' 51" W along the centerline of State Route 93, the Grantor's Westerly property line, the Easterly property line of the aforementioned Trout Farms parcel and the Easterly lines of Lot No. 7 and Lot No. 6 of Harsh Farms Subdivision as recorded in Plat Cabinet 2, Pages 103 and 104 a distance of 773.79 feet to a point;

Thence leaving the centerline of State Route 93 N 86° 48' 21" E and through the Grantor's lands a distance of 798.52 feet to a fence post (passing an iron pin set at 31.80 feet and an iron pin set at 796.92 feet and passing the West line of Fractional Lot 4 at 401.40 feet), said post being on a property line of the Grantor and on the Westerly property line of a parcel of land conveyed to David and Lisa Honeycutt, Trustees in Official Record 554, Page 721;

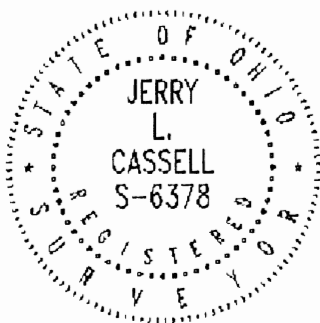
Thence S 03° 18' 17" W along a property line of the Grantor, the Westerly property line of the aforementioned Honeycutt parcel and the Westerly property line of a parcel of land conveyed to James Stivison in Official Record 614, Page 118 a distance of 658.81 feet to a point (passing a 5/8 inch iron pin found with a plastic identification cap in scribed "SVE-8127" at 61.34 feet and 616.27 feet), said point being the Southwesterly property corner of the aforementioned Stivison parcel, a property corner of the Grantor and in the center of Angle Road (Township Road 69);

Thence S 77° 30' 32" W through the Grantor's lands a distance of 737.88 feet (passing an iron pin set at 20.00 feet and an iron pin set at 707.37 feet and the common line of Fractional Lot 3 and Fractional Lot 4 at 414.63 feet) to the point of beginning, containing 12.461 Acres, more or less, (6.306 Acres in Fractional Lot 4 and 6.155 Acres in the West half of the Northeast quarter of Section 34) and subject to all legal easements and rights of way of record.

All iron pins set are 5/8-inch iron pins 30" in length with 1¼" plastic identification caps inscribed "CASSELL S-6378."

The bearing system for this description is based on evidence found on the South line of the Northeast quarter of Section 34, Township 14, Range 17 and bears N 87° 06' 18" W and is for the determination of angles only.

This description was prepared on March 20, 2020 by Jerry L. Cassell, Ohio Professional Surveyor No. 6378 and is based on an actual field survey of the premises in November of 2019 and existing public records.



APPROVED MATHEMATICALLY
Hocking County Engineer's Office
By: *CV* Date: M. 3. 22nd 2020

A handwritten signature in cursive script that reads "Jerry L. Cassell".

Jerry L. Cassell, P.S.

DESCRIPTION OF A 30.946 ACRE PARCEL

Situated in the State of Ohio, County of Hocking, Township of Falls and being a part of a parcel of land conveyed to Edward and Marjorie Kilbarger, Trustees, James Kilbarger and Anthony Kilbarger (hereinafter referred to as "Grantor") in Official Record 411, Page 61 and Official Record 372, Page 455 and being a part of the Northeast Quarter of Section 34, Township 14, Range 17 and being more particularly described as follows:

Commencing for reference at a point at the Southeast corner of the Northeast quarter of Section 34;

Thence N 87° 06' 18" W through the Grantor's lands and along the South line of the Northeast quarter of Section 34 a distance of 34.98 feet to an iron pin set, said iron pin being the **TRUE POINT OF BEGINNING** for the parcel herein described;

Thence continuing N 87° 06' 18" W through the Grantor's lands, along the Northerly property line of a parcel of land conveyed to Richard and Jamie L. Riggs, Trustees in Official Record 155, Page 547 and along the South line of the Northeast quarter of Section 34 a distance of 1187.42 feet to a point, said point being a property corner of the Grantor, the Southeasterly property line of a parcel of land conveyed to Trout Farms LLC in Official Record 600, Page 412, the Northwesterly property corner of the aforementioned Riggs parcel and on centerline of State Route 93 (passing a 5/8 inch iron pin found at 246.09 feet and a 5/8 inch iron pin found at 1152.95 feet and passing the common line of Fractional Lot 3 and Fractional Lot 4 at 891.92 feet);

Thence along the centerline of State Route 93, the Grantor's Westerly property line and the Easterly property line of the aforementioned Trout Farms parcel the following five (5) courses:

- 1) N 26° 36' 15" W a distance of 55.66 feet to a point;
- 2) With a curve to the left having a delta angle of 03° 20' 53", a radius of 3150.09 feet, and a length of curve of 184.08 feet a chord bearing N 28° 16' 42" W and a chord distance of 184.05 feet to a point (passing the West line of Fractional Lot 4 with a curve to the left having a delta angle of 02° 51' 25", a radius of 3150.09 feet, and a length of curve of 157.08 feet a chord bearing N 28° 01' 58" W and a chord distance of 157.06 feet);
- 3) N 29° 57' 09" W a distance of 234.12 feet to a point;
- 4) With a curve to the right having a delta angle of 27° 04' 17", a radius of 805.28 feet, and a length of curve of 380.48 feet a chord bearing N 16° 25' 00" W and a chord distance of 376.96 feet to a point;
- 5) N 02° 52' 51" W a distance of 322.79 feet to a point;

Thence leaving the centerline of State Route 93 and the Grantor's Westerly property line N 77° 30' 32" E through the Grantor's lands a distance of 737.88 feet to a point (passing an iron pin set at 30.51 feet, an iron pin set at 717.88 feet and passing the West line of Fractional Lot 4 at 323.25 feet), said point being in the center of Angle Road (Township Road 69), a property corner of the Grantor and the Southwesterly property corner of a parcel of land conveyed to James Stivison in Official Record 614, Page 118 and on the common line of Fractional Lot 3 and Fractional Lot 4;

Thence along the property lines of the Grantor, the Southerly property lines of the aforementioned Stivison parcel, the Southerly property line of a parcel of land conveyed to Chad M. and Dawn M. Jensen in Official Record 635, Page 471 and the center of Angle Road the following four (4) courses:

- 1) N 35° 20' 48" E a distance of 41.10 feet to a point;
- 2) N 72° 06' 32" E a distance of 89.71 feet to a point;
- 3) N 85° 35' 43" E a distance of 73.91 feet to a point;
- 4) N 87° 21' 59" E a distance of 63.63 feet to a point;

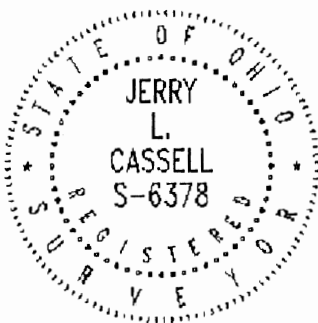
Thence leaving the center of Angle Road and through the Grantor's lands the following Seven (7) Courses:

- 1) S 12° 51' 15" E a distance of 171.93 feet to an iron pin set (passing an iron pin set at 20.88 feet);
- 2) S 10° 26' 03" W a distance of 216.96 feet to an iron pin set;
- 3) S 29° 37' 22" E a distance of 149.30 feet to an iron pin set;
- 4) S 30° 22' 36" E a distance of 211.37 feet to an iron pin set;
- 5) S 27° 56' 18" E a distance of 254.76 feet to an iron pin set;
- 6) S 31° 35' 18" E a distance of 409.64 feet to an iron pin set;
- 7) S 25° 22' 16" E a distance of 133.67 feet to the point of beginning, containing 30.946 Acres, more or less, (15.251 Acres in Fractional Lot 3, 11.034 Acres in Fractional Lot 4 and 4.661 Acres in the Southwest quarter of the Northeast quarter of Section 34) and subject to all legal easements and rights of way of record.

All iron pins set are 5/8-inch iron pins 30" in length with 1¼" plastic identification caps inscribed "CASSELL S-6378."

The bearing system for this description is based on evidence found on the South line of the Northeast quarter of Section 34, Township 14, Range 17 and bears N 87° 06' 18" W and is for the determination of angles only.

This description was prepared on March 20, 2020 by Jerry L. Cassell, Ohio Professional Surveyor No. 6378 and is based on an actual field survey of the premises in November of 2019 and existing public records.



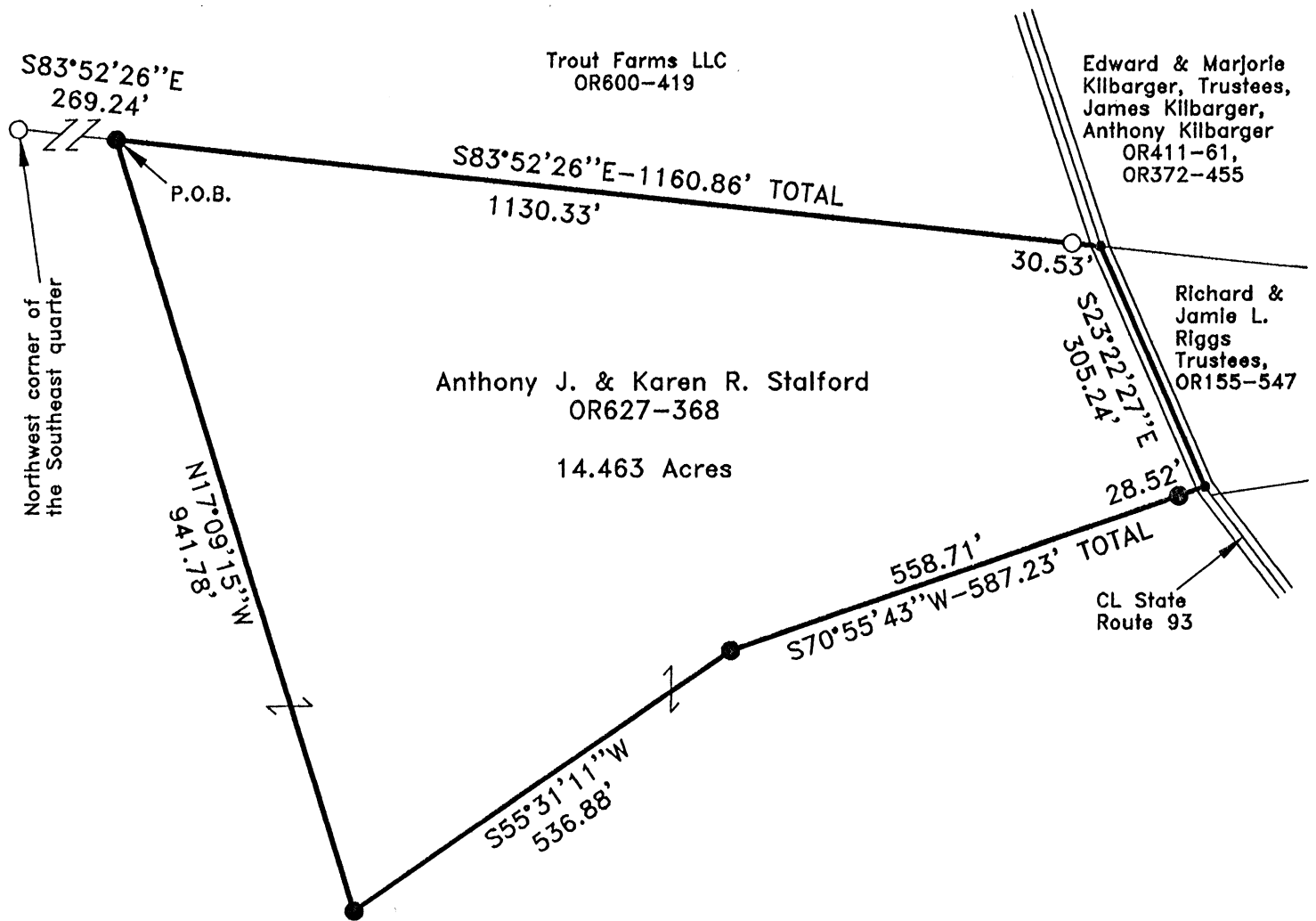
APPROVED MATHEMATICALLY
Hocking County Engineer's Office
By: CU Date: M. 3. 24. 2020

A handwritten signature in cursive script that reads "Jerry L. Cassell".

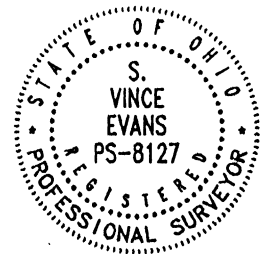
Jerry L. Cassell, P.S.

PLAT OF A 14.463 ACRE TRACT

Situated in Falls Township, Hocking County, Ohio; being part of the north half of the Southeast quarter of Section 34, Township 14, Range 17.



APPROVED MATHEMATICALLY
Hocking County Engineer's Office
By: *WJB* Date: *MAY 10, 2020*



LEGEND:

- Point
- 5/8"x30" iron pin with 1-1/4" plastic ID cap stamped SVE-8127 set
- 5/8" iron pin with 1-1/4" plastic ID cap stamped SEYMOUR & ASSOC. found

REFERENCES:

Tax maps
Deed descriptions
Previous surveys
Existing monumentation
Existing public road

REFERENCE BEARING:

The north line of the Southeast quarter as South 83 degrees 52 minutes 26 seconds East. Bearings are based upon an assumed meridian and are to denote angles only.

CERTIFICATION:

I hereby certify that an actual survey was made under my supervision of the premises shown hereon on the 2nd day of April, 2020 and that the plat is a correct representation of the premises as described by said survey.

S. Vince Evans
Registered Surveyor No. 8127

Survey by: S. Vince Evans Surveying – S. Vince Evans P.S. 8127
64103 Woodgeard Road, Creola, Ohio 45622
Phone (740) 380-3884
FAX (740) 596-5831

SURVEY DESCRIPTION OF A 14.463 ACRE TRACT

Situated in Falls Township, Hocking County, Ohio; being part of the north half of the Southeast quarter of Section 34, Township 14, Range 17; and being more particularly described as follows:

Being part of a 157 acre tract as described in Volume OR627, Page 368 to Anthony J. and Karen R. Stalford.

Commencing at a 5/8" iron pin with 1-1/4" plastic ID cap stamped SEYMOUR & ASSOC. found at the Northwest corner of the Southeast quarter;

Thence with the north line of the Southeast quarter, South 83 degrees 52 minutes 26 seconds East a distance of 269.24 feet to a 5/8" iron pin set, and being the point of **Beginning** of the tract of land to be described;

Thence with the north line of the Southeast quarter, South 83 degrees 52 minutes 26 seconds East a distance of 1160.86 feet to a Point in the centerline of State Route 93, passing a 5/8" iron pin with 1-1/4" plastic ID cap stamped SEYMOUR & ASSOC. found at a distance of 1130.33 feet;

Thence with the centerline of State Route 93, South 23 degrees 22 minutes 27 seconds East a distance of 305.24 feet to a Point;

Thence leaving the centerline of State Route 93, South 70 degrees 55 minutes 43 seconds West a distance of 587.23 feet to a 5/8" iron pin set, passing a 5/8" iron pin set at a distance of 28.52 feet;

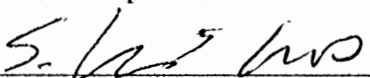
Thence South 55 degrees 31 minutes 11 seconds West a distance of 536.88 feet to a 5/8" iron pin set;

Thence North 17 degrees 09 minutes 15 seconds West a distance of 941.78 feet to the point of beginning and containing 14.463 acres, more or less, subject to any public or private easements of record.

The above 14.463 acre survey was based upon information obtained from tax maps, deed descriptions, previous surveys, existing monumentation, and existing public roads. The reference bearing for this survey is the north line of the Southeast quarter as South 83 degrees 52 minutes 26 seconds East. Bearings are based upon an assumed meridian and are to denote angles only.

All iron pins set by this survey are 5/8" by 30" and are capped by a 1-1/4" plastic identification cap stamped "SVE-8127".

The above described property was surveyed by S. Vince Evans, Ohio Registered Surveyor No. 8127, on April 2, 2020.

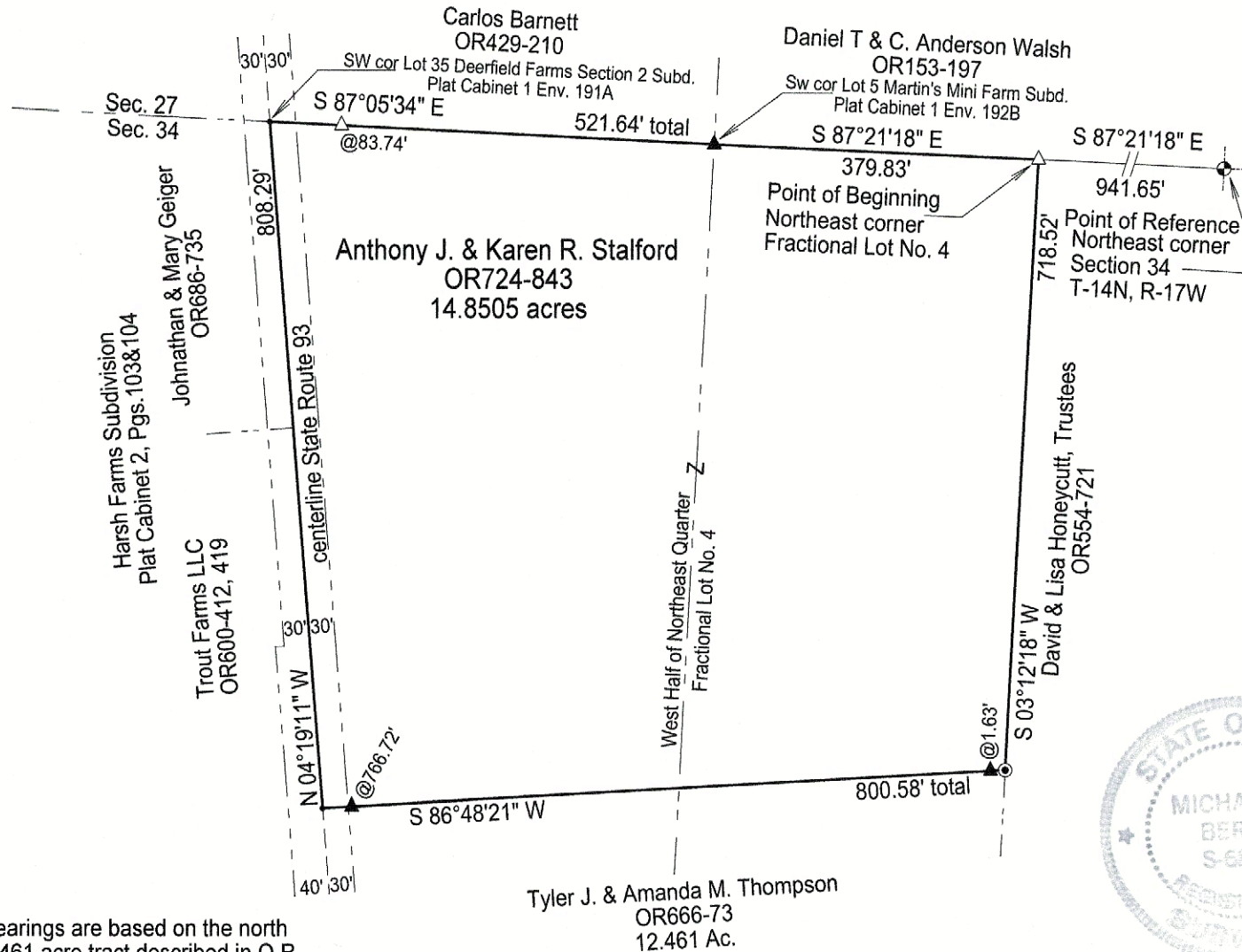

S. Vince Evans, P. S. 8127

Survey by: S. Vince Evans Surveying
S. Vince Evans, P. S. 8127
64103 Woodgeard Road
Creola, Ohio 45622
Phone (740) 380-3884
FAX (740) 596-5831

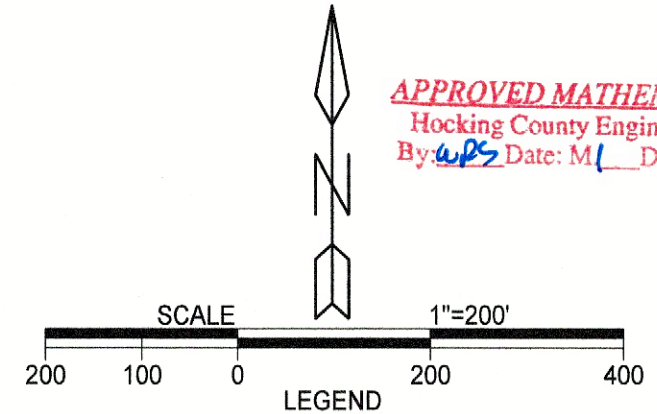


APPROVED MATHEMATICALLY
Hocking County Engineer's Office
By: WB Date: MAY 16, 2020

**SITUATED IN FRACTIONAL LOT No. 4 AND THE WEST HALF OF THE NORTHEAST QUARTER
OF SECTION 34, FALLS TOWNSHIP, T-14N. R-17W, HOCKING COUNTY, STATE OF OHIO.**



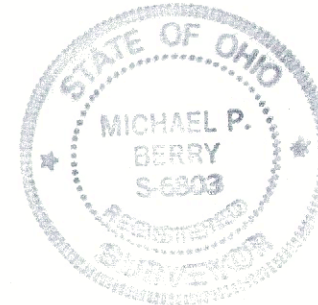
APPROVED MATHEMATICALLY
Hocking County Engineer's Office
By: WPS Date: M 1 D 31 Y 2025



- △ 5/8" x 30" iron pin w/ 1 1/4" plastic ID cap stamped "M.P.B. S-6803" set
- ⊙ 5/8" iron pin w/ 1 1/4" plastic ID cap stamped "Cassell S-6378" found
- ▲ 5/8" iron pin found
- ⊕ Concrete monument found
- point

boundary line
centerline State Route 93
right of way line
adjacent / political subdivision line

Note: Current and previous tax plats
and previous surveys taken from
Hocking County Drafting Department's
website
Deeds: as noted on plat



Note: Cited bearings are based on the north
line of the 12.461 acre tract described in O.R.
Vol. 666, Pg. 73 as running S 86°48'21" W.

Surveyed and platted by
MICHAEL P. BERRY
OHIO PROFESSIONAL SURVEYOR #6803
P.O. BOX 1127
LOGAN, OHIO 43138
740-385-3279

Note: No highway monumentation shown as per
ODOT right of way plans Hoc-93-7.32-9.94.

RECEIVED
February 03, 2025
Hocking County
Auditor's Office

Plat prepared from an actual survey made on the 10th day of October,
2022 by,

Michael P. Berry Ohio Professional Surveyor No. 6803

DESCRIPTION OF SURVEY FOR MR. TONY STALFORD

Being the tract of land described in Vol. 724, Pg. 843, Hocking County Official Records, situated in Fractional Lot No. 4 and the W 1/2 of the NE 1/4 of Section 34, Falls Twp., T-14N, R-17W, Hocking County, Ohio, and being more particularly described as follows:

Beginning at an iron pin set on the NE corner of said Fractional Lot No. 4, said pin being referenced by a concrete monument found on the NE corner of Section 34 which bears S 87 degrees 21' 18" E a distance of 941.65 ft.;

Thence, with the east line of said Fractional Lot, S 3 degrees 12' 18" W a distance of 718.52 ft. to a 5/8" iron pin found with a 1 1/4" plastic I.D. cap stamped "Cassell S-6378", said pin being the NE corner of the 12.461 acre tract described in O.R. Vol. 666, Pg. 73;

Thence, with the north line of said tract, S 86 degrees 48' 21" W, passing 5/8" iron pins found at 1.63 ft. and 766.72 ft. going a total distance of 800.58 ft. to a point in the center of variable width St. Rt. 93;

Thence, with the centerline of said State Route and along the east boundary of the Harsh Farms Subdivision (Plat Cabinet 2, Pgs. 103 & 104), N 4 degrees 19' 11" W a distance of 808.29 ft. to a point on the SW corner of Lot No. 35 of "Deerfield Farms Section 2 Subd.";

Thence, with the south line of Lot 35 and along the north line of Section 34, S 87 degrees 05' 34" E passing an iron pin set at 83.74 ft. going a total distance of 521.64 ft. to a 5/8" iron pin found on the SW corner of Lot No. 5 of "Martin's Mini-Farm Subd.";

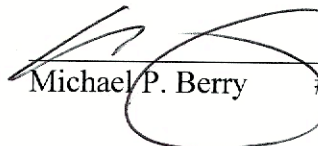
Thence, with the south line of said Lot No. 5 and continuing with the north line of Section 34, S 87 degrees 21' 18" E a distance of 379.83 ft. to the Place of Beginning, containing 14.8505 acres, more or less, and being subject to the right-of-way of St. Rt. 93 and all valid easements.

Cited bearings are based on the north line of the 12.461 acre tract described in O.R. Vol. 666, Pg. 73, as running S 86 degrees 48' 21" W.

All iron pins described as being set are 5/8" X 30" with a 1 1/4" plastic I.D. cap stamped "M.P.B. S-6803".

The above description is the result of an actual survey made by Michael P. Berry, Ohio Registered Surveyor No. 6803, on October 10, 2022.



 (1-31-25)
Michael P. Berry #6803

RECEIVED
February 03, 2025
Hocking County
Auditor's Office

APPROVED MATHEMATICALLY
Hocking County Engineer's Office
By: WPS Date: M. 1 D. 31 Y. 2025