

RECEIVED IN HOCK COUNTY,  
at 10:01 O'CLOCK A M  
RECORDED 19  
RECORD VOL. 1 PAGE 1022

MAR 18 1983

*Donna R. Leach*

R9-7100-86 (4-4-73)

GPO 802-755



RECORDER - HOCKING COUNTY  
LOGAN, OHIO 43138

CERTIFIED LAND CORNER RESTORATION

State of Ohio

County of Hocking

ss.

I Mitchell W. Cosler, do hereby certify that on the 3rd day of March, 1982, I found evidence of the Section corner of Sections 29, 30, 35 and 36 Township 13 North, Range 15 West, Levi Davis, Survey, as described hereon; and that from this evidence I established a new monument and accessories as described hereon to perpetuate the original location of this corner:

Description of original monument and accessories and subsequent restorations:

Original monument and accessories, as established by Levi Davis Survey (Hocking County) in 1869 and 1870, are as follows: Monument set - unknown.

Accessories -

Hickory Hickory  
20" 20"  
S71W N71E  
4 Links 25 Links

Plats of the Levi Davis Surveys are filed in the Hocking County Recorder's Office, Book A-4, Pages 422, 423, 427 and 428.

Subsequent restoration is recorded in Book 1, Pages 274 and 277 Hocking County Surveys, filed at Hocking County Engineer's Office. The 1913 Survey records a stone corner monument and bearing to Elm, 15", N-W, 16.5 feet.

Description of corner evidence found:

In 1937 the U.S. Forest Service recovered a stone monument, and established the following BT's -  
Elm 14" N21W 21 Links  
Sassafras 6" S83W 43 Links  
Hickory 6" N25E 18 Links

In 1982 the U.S. Forest Service again recovered the corner stone and also the Elm and Hickory bearing trees. The Elm is dead and laying on the ground and is believed to be the Elm called for in 1913.

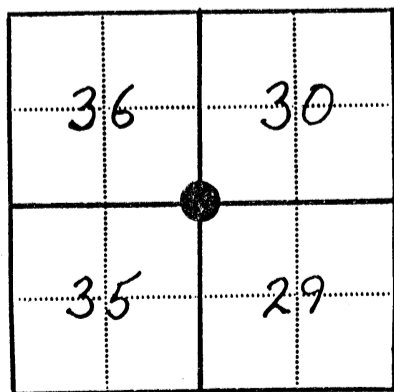
Corner stone is 2" 8" on top with definite +, and 2" above ground level. There are faint stones remains three feet W-SW of stone.

Description of monument and accessories I established to perpetuate the original location of this corner:

The stone corner monument was left in place and the following bearing trees were established:

Shagbark	Hickory	Sugar Maple	Sugar Maple (Unscribed)
Hickory			
3"	5"	4"	2"
N79E	N30E	N27W	N87W
6.1 Ft.	11.6 Ft.	12.3 Ft.	8.5 Ft.

This corner is eight feet west of a stripmined highwall (20 feet high).



● - Corner monument restored

□ -

Resident witnesses J. Graham Snyder

Dated at Dayton Ohio, this 21st day of July, 1982.

Signature Mitchell W. Cosler Title Registered Land Surveyor  
(County Surveyor, Registered Land Surveyor, or other duly authorized official)

Surveyors Registration No. S-6393

Office of County of

I hereby certify that the within instrument was filed in this office for record on the day of 19, and was filed in Book No. Page No. of County Records.

Signature Title

Township 13 North, Range 15 West, Section 29, 30, 35 & 36, Index No. E-5, Page No.

WARD 30+36

50674

RECEIVED IN HOCKING COUNTY, O.  
at 9:59 O'CLOCK A M  
RECORDED 19  
RECORD 647 VOL. 1 PAGE 1020

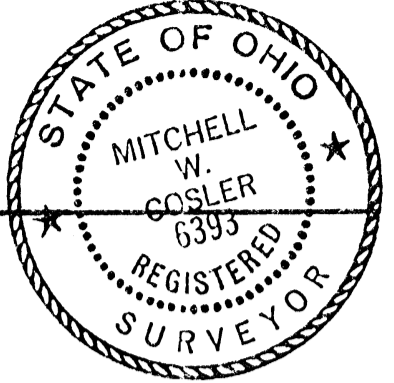
MAR 18 1982

Donna B. Leach

R9-7100-86 (4-4-73) GPO 802-755

RECORDER - HOCKING COUNTY  
LOGAN, OHIO 43138

CERTIFIED LAND CORNER RESTORATION



State of Ohio }  
County of Hocking } ss.

I, Mitchell W. Cosler, do hereby certify that on the 3rd day of March, 1982, I found evidence of the 1/4 Section corner of Sections 30 and 36 Township 13 North, Range 15 West, Levi Davis, Ohio River Survey, as described hereon; and that from this evidence I established a new monument and accessories as described hereon to perpetuate the original location of this corner:

Description of original monument and accessories and subsequent restorations:

Original monument and accessories, as established by Levi Davis Survey (Hocking County) in 1869 and 1870, are as follows:

Monument set - unknown Plats of the Levi Davis Surveys are filed in the Hocking County Recorder's Office, Book A-4, Page 423 and Page 428.  
Accessories -  
W. Oak 24" W. Oak 24" Reference is made to Book 1, Hocking County Surveys, filed at Hocking County Engineer's Office, Pages 274 and 275. This survey indicates a corner stone monument was present in 1913.  
S83E S37 1/2 W  
10 Lks. 33 Lks.

Description of corner evidence found:

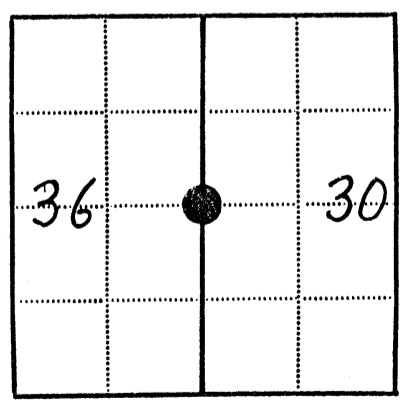
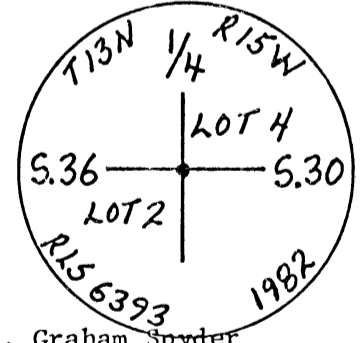
No evidence of the corner stone or bearing trees were found. The corner point is on an old railroad grade and near coal mining activities. Old fence lines run north and south from vicinity of the corner.

Description of monument and accessories I established to perpetuate the original location of this corner:

A 2 1/2" x 30" aluminum pipe filled with concrete with an aluminum cap was set for the corner monument. The cap was stamped as shown below. Corner point was determined by single proportionate measurements from section corners approximately one-half mile northerly and southerly. Established the following scribed bearing trees and objects:

Utility Pole	Sycamore	W.Pine	W.Pine
-	4"	11"	10"
S78E	S22E	N27W	N51W
138.3 Ft.	59.8 Ft.	59.4 Ft.	111.4 Ft.

Centerline of gravel road - south 37 feet  
Centerline of stream - west 138 feet



● - Corner monument restored  
□ -

Resident witnesses J. Graham Snyder

Dated at Dayton Ohio, this 21st day of July 1982

Signature Mitchell W. Cosler Title Registered Land Surveyor  
(County Surveyor, Registered Land Surveyor, or other duly authorized official)

Surveyors Registration No. S-6393

Office of County of

I hereby certify that the within instrument was filed in this office for record on the day of 19, and was filed in Book No. Page No. of County Records.

Signature Title

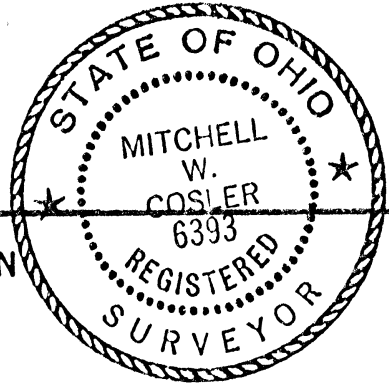
Township 13 North, Range 15 West, Section 30 & 36, Index No. C-5, Page No.

50682

WARD 30 + 36  
(On County Line)

RECEIVED IN HOCKING COUNTY, OHIO  
at 10:09 O'CLOCK P.M.  
RECORDED 19  
RECORD 677 VOL 1 PAGE 1028

MAR 18 1983



R9-7100-86 (4-4-73) GPO 802-755

Donna R. Beach  
RECORDER - HOCKING COUNTY  
LOGAN, OHIO 43138

CERTIFIED LAND CORNER RESTORATION

State of Ohio }  
County of Hocking } ss.

I Mitchell W. Cosler, do hereby certify that on the 3rd day of March, 1982, I found evidence of the Section corner of Sections 30 and 36 Township 13 North, Range 15 West, Levi Davis, ~~Ohio River~~ Survey, as described hereon; and that from this evidence I established a new monument and accessories as described hereon to perpetuate the original location of this corner:

Description of original monument and accessories and subsequent restorations:

The original monument, as established by the Levi Davis Survey (Hocking County) in 1869, is unknown. A plat of the survey is filed at the Hocking County Recorder's Office, Book A-4, Page 428. The following bearing trees were established:

Hickory	W. Oak
24"	36"
S18W	S5E
37 Links	46 Links

Subsequent restoration, Book 1, Page 275, Hocking County Surveys, filed at Hocking County Engineer's Office. This survey indicates an iron rail monument was present in 1913. The following bearing trees were established:

Chestnut Oak	Ash	Hickory
20"	9"	12"
N80W	N39E	S53W
32 Feet	7.2 Feet	11.6 Feet

Description of corner evidence found:

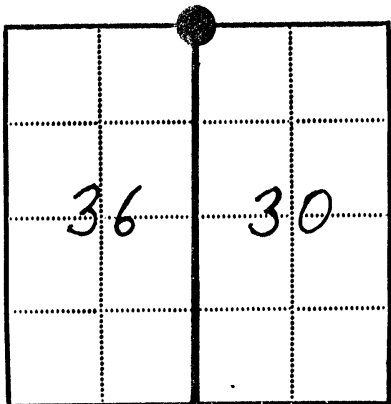
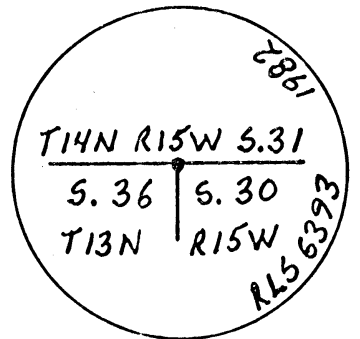
A CCC Survey in 1937 recovered an iron rail monument and a 1913 bearing tree: Hickory 12" S50W 19 Links. In 1981 the USFS recovered the iron rail, old fences running east, west and south and the following bearing trees:

Hickory w/wire	Stump Hole	Large Rotten Stump w/wire
16"	N39E	N80W
S53W	7 Feet	29.8 Feet
11.6 Feet		

Description of monument and accessories I established to perpetuate the original location of this corner:

The iron rail monument was replaced with a 2 1/2" dia. x 30" concrete filled aluminum pipe with an aluminum cap stamped as shown below. The iron rail (24" long) was buried beside the pipe. The following scribed bearing trees were established:

W. Oak	B. Oak	Shagbark Hickory
19"	4"	9"
N59W	S38W	S35E
14.8 Feet	21.2 Feet	15.7 Feet



● - Corner monument restored  
□ -

Resident witnesses..... I. Graham Snyder.....

Dated at Dayton Ohio, this 21st day of July, 1982.

Signature Mitchell W. Cosler Title Registered Land Surveyor  
(County Surveyor, Registered Land Surveyor, or other duly authorized official)

Surveyors Registration No. S-6393

Office of..... County of.....

I hereby certify that the within instrument was filed in this office for record on the..... day of..... 19....., and was filed in Book No..... Page No..... of County Records.

Signature..... Title.....

Township 13 North, Range 15 West, Section 30 & 36, Index No. A-5, Page No.....

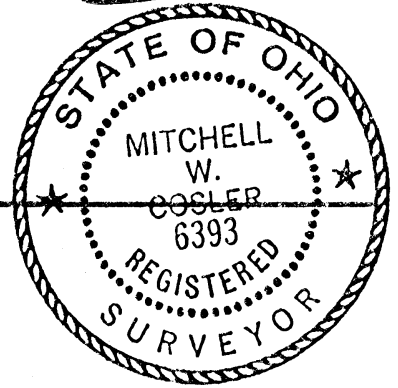
50683

Green 6  
Falls Gore 36  
WARD 36

RECEIVED IN HOCKING COUNTY, OHIO  
at 10:10 O'CLOCK A M  
RECORDED \_\_\_\_\_ 19 \_\_\_\_\_  
RECORD 14M VOL 1 PAGE 1029

MAR 18 1983

R9 - 7100-86 (4-4-73) GPO 802-755



Donna R. Leach

CERTIFIED LAND CORNER RESTORATION

RECORDER - HOCKING COUNTY  
State of Ohio 43138

County of Hocking } ss.

I Mitchell W. Cosler, do hereby certify that on the 3rd day of March, 1982, I found evidence of the Section corner of Sections 6 and 36 Township 13 North, Range 15 & 16 West, Levi Davis Survey, as described hereon; and that from this evidence I established a new monument and accessories as described hereon to perpetuate the original location of this corner:

Description of original monument and accessories and subsequent restorations:

The original monument, as established by the Levi Davis Survey (Hocking County) in 1869, is unknown. A plat of the survey is filed at the Hocking County Recorder's Office, Book A-4, Page 428. The following Bearing trees were established:

Beech	Hickory
30"	18"
S35E	S55W
13 Links	47 Links

Subsequent restoration - 1914, Hocking County Book of Surveys, Book 1, Page 274, filed on record at Hocking County Engineer's Office. Stone monument, BT-Elm 12" S83E 12.5 Ft.

Description of corner evidence found:

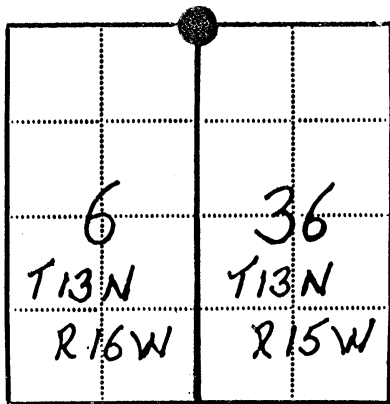
In 1981 a stone monument with a small + on top was recovered. Fence lines east and west from monument. Recovered 1914 BT - Dead Elm 18" S83E 12.5 Ft.

Description of monument and accessories I established to perpetuate the original location of this corner:

The stone was left in position for the corner monument and the following scribed bearing trees were established.

Doublestemed	Sugar Maple	Black Oak
Ash	5"	15"
11"	S7W	S72W
S40E	16.4 Ft.	17.4 Ft.
22.4 Ft.		

FALLS GORE  
36



● - Corner monument restored  
□ -

Resident witnesses J. Graham Snyder

Dated at Dayton Ohio, this 21st day of July, 1982

Signature Mitchell W. Cosler Title Registered Land Surveyor  
(County Surveyor, Registered Land Surveyor, or other duly authorized official)

Surveyors Registration No. S-6393

Office of County of

I hereby certify that the within instrument was filed in this office for record on the day of 19, and was filed in Book No. Page No. of County Records.

Signature Title

Township 13 North, Range 15 West, Section 36, Index No. A-1, Page No. A-25

50681

FALLS GORE 36  
WARD 36  
(On County Corner)

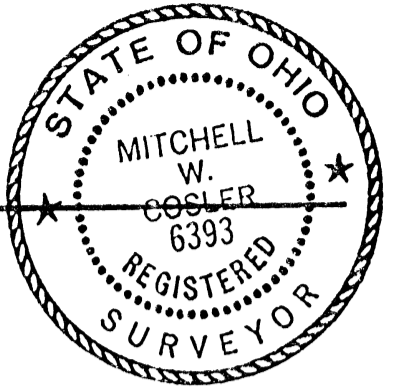
RECEIVED IN HOCKING COUNTY, OHIO  
at 10:07 O'CLOCK A.M.  
RECORDED 19  
RECORD 641 VOL. 1 PAGE 1027

MAR 18 1983

R9-7100-86 (4-4-73) GPO 802-755

Donna R. Leach  
RECORDER - HOCKING COUNTY  
LOGAN, OHIO 43138

CERTIFIED LAND CORNER RESTORATION



State of Ohio }  
County of Hocking and Perry } ss.

I, Mitchell W. Cosler, do hereby certify that on the 3rd day of March, 1982, I found evidence of the corner of Sections 36 and 31, Township 14 North, Range 15 and 16 West, Ohio River Survey, as described hereon; and that from this evidence I established a new monument and accessories as described hereon to perpetuate the original location of this corner:

Description of original monument and accessories and subsequent restorations:

The original survey was in 1790 by Ebenezer Buckingham at which time he set an elm post corner on the east side of steep hill. Bearing trees were:

Hickory	W. Oak
12"	24"
S17E	N14W
32 Links	29 Links

Subsequent restorations were:

1. Large Book of Surveys, Page 303, Perry County, April 20, 1848.
2. Hocking County Book of Surveys, Book 1, Page 314 and 315, December 20, 1911.
3. Hocking County Book of Surveys, Book 1, Page 274, 1909. Stone monument and bearing trees

Description of corner evidence found:

In 1981 a stone monument 6" x 11" x 16" with a + on top was found near the top of a steep hillside. Also recovered three of the 1909 bearing trees.

Elm	Elm Stump	Hickory	Walnut	Mulberry
15"	12"	12"	8"	13"
S73W	N26E	S85W	N27E	N 1/2E
8 Feet	12.2 Feet	15.5 Feet	19.3 Feet	25.7 Feet

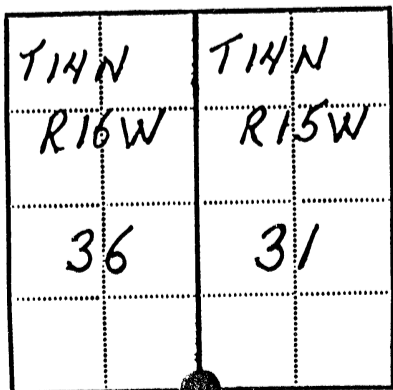
Shag, Hickory	Walnut	Rotten Stump
18"	12"	-
S86W	N27E	North
15.6 Feet	19.3 Feet	26.0 Feet

Old fence lines north and west.

Description of monument and accessories I established to perpetuate the original location of this corner:

The stone monument was left in place and the following scribed bearing trees were established.

Sugar Maple (Double 14" Stemed)	Buckeye 8"	Shagbark Hickory 17"
N20E	S70E	S75W
22.5 Ft.	10.2 Ft.	12.3 Ft.



WARD 36 - Corner monument restored

Resident witnesses..... J. Graham Snyder.....

Dated at Dayton, Ohio, this 21st day of July, 1982.

Signature Mitchell W. Cosler Title Registered Land Surveyor  
(County Surveyor, Registered Land Surveyor, or other duly authorized official)  
S-6393

Surveyors Registration No.....

Office of..... County of.....  
I hereby certify that the within instrument was filed in this office for record on the..... day of..... 19....., and was filed in Book No..... Page No..... of County Records.

Signature..... Title.....

Township 14 North, Range 15 West, Section 31, Index No. Z-1, Page No. Z-25

RECEIVED IN HOC. COUNTY, OHIO at 10:50 O'CLOCK A M RECORDED 19 RECORD 1 VOL. 1 PAGE 1021

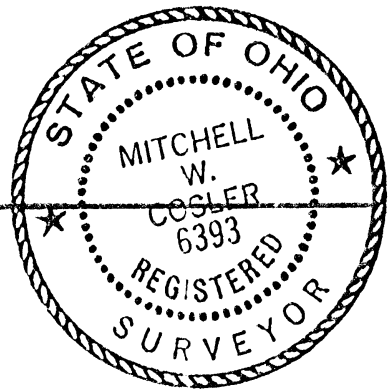
MAR 18 1983

R9 - 7100-86 (4-4-73) GPO 802-755

Donna R. Leach

RECORDER - HOCKING COUNTY LOGAN, OHIO 43138

CERTIFIED LAND CORNER RESTORATION



State of Ohio } ss. County of... Hocking.....

I, Mitchell W. Cosler, do hereby certify that on the 3rd day of March, 1982, I found evidence of the N 1/16 corner of Sections 30 and 36 Township 13 North, Range 15 West, Levi Davis, Ohio River Survey, as described hereon; and that from this evidence I established a new monument and accessories as described hereon to perpetuate the original location of this corner:

Description of original monument and accessories and subsequent restorations:

Original monument and accessories, as established by Levi Davis Survey (Hocking County) in 1869 and 1870, are unknown. Plats of the Levi Davis Surveys are filed at the Hocking County Recorder's Office. Book A-4, Page 423 and Page 428.

Description of corner evidence found:

No evidence of the corner was found other than the intersection of old fence lines from the north, south and west.

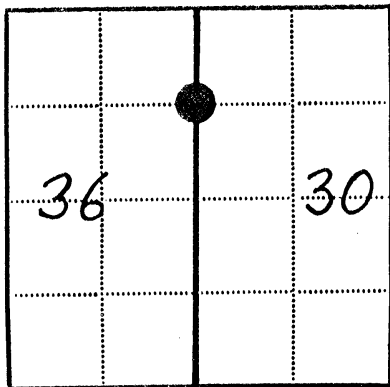
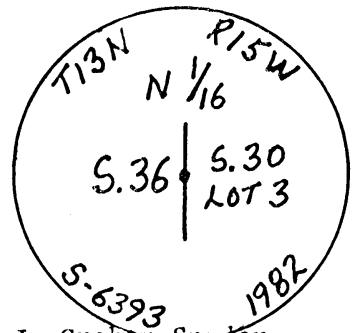
Description of monument and accessories I established to perpetuate the original location of this corner:

A 2 1/2" x 30" aluminum pipe filled with concrete, with an aluminum cap was set for the corner monument. The cap was stamped as shown below. The corner point was determined by single proportionate measurements from corner monuments north and south.

Established the following new bearing tree:

Table with 3 columns: Sugar Maple (6" N39W, 8.1 Ft.), Hackberry (8" S77E, 19.2 Ft.), Beech (5" S9W, 21.4 Ft.)

The centerline of a stream is 72 feet east.



Legend: ● - Corner monument restored, □ -

Resident witnesses..... J. Graham Snyder

Dated at Dayton Ohio, this 21st day of July, 1982.

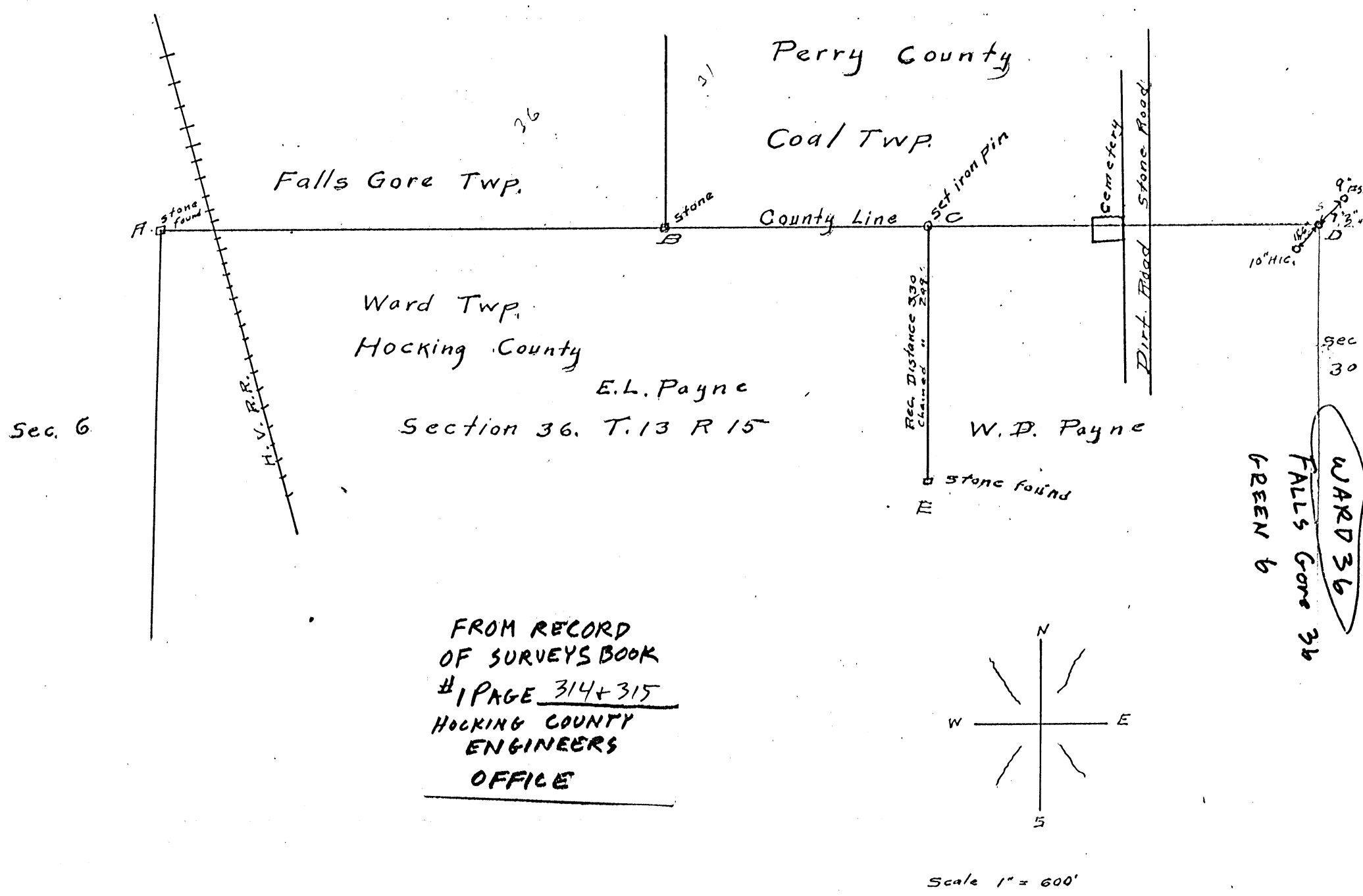
Signature Mitchell W. Cosler Title Registered Land Surveyor (County Surveyor, Registered Land Surveyor, or other duly authorized official)

Surveyors Registration No. S-6393

Office of.....County of..... I hereby certify that the within instrument was filed in this office for record on the.....day of.....19....., and was filed in Book No.....Page No.....of County Records.

Signature.....Title.....

Township 13 North, Range 15 West, Section 30 & 36, Index No. B-5, Page No.....



14

Survey of County Line, Hocking & Perry, Sec 36 T. 13, R. 15.

A. Stone Found

B. " "

C. Set Iron Pipe 2' Long

D. " Maple stake 2.5' Long 1 1/2" in diameter. Note this stake is set on county line E & W but its position as to the N & S line was not determined.

E. Stone found.

Surveyed December 20 1911 by E. N. Turner C.H.C.

John Baillie ~~Co~~ County Surveyor of Perry Co

Helpers sworn by John Baillie } J. A. Payne  
 George Price  
 Hector Priest

See Book #1 - 1911 for field notes

Page 34. E. N. Turner C.H.C.

Mag. 1909.

Witness  
Mag. 1914  
12' Elm S 85° E 12.5

Mag. 1914  
12' Elm S 85° E 12.5

15' Elm S 73° W 8' } orig witness  
12' Stump N 26° E 12.2 }  
12' Hickory S 85° W 15.5 } New Witness  
8' Walnut N 27° E 19.3 }  
13' Mulberry N 1/2° E 25.7 }

Ward T.P

36

FROM RECORD  
OF SURVEYS BOOK  
#1 PAGE 274+275  
HOCKING COUNTY  
ENGINEERS  
OFFICE

Witness  
15' Mulberry  
N 26° W 6.2  
12' Maple  
S 25° W 11.5

Co/Twp  
31  
Perry Co

Co/Twp  
32  
Perry Co

Sec 30 Ward

N. side Sec line  
1323.5

16" Hick. S 70° E 12.3  
16" 13 Gum N 32° W 8'

Lost Run Branch H.V. Ry

W. line Sec 30

15' Elm N - W 16.5'

2410.7  
2691.48  
1922