

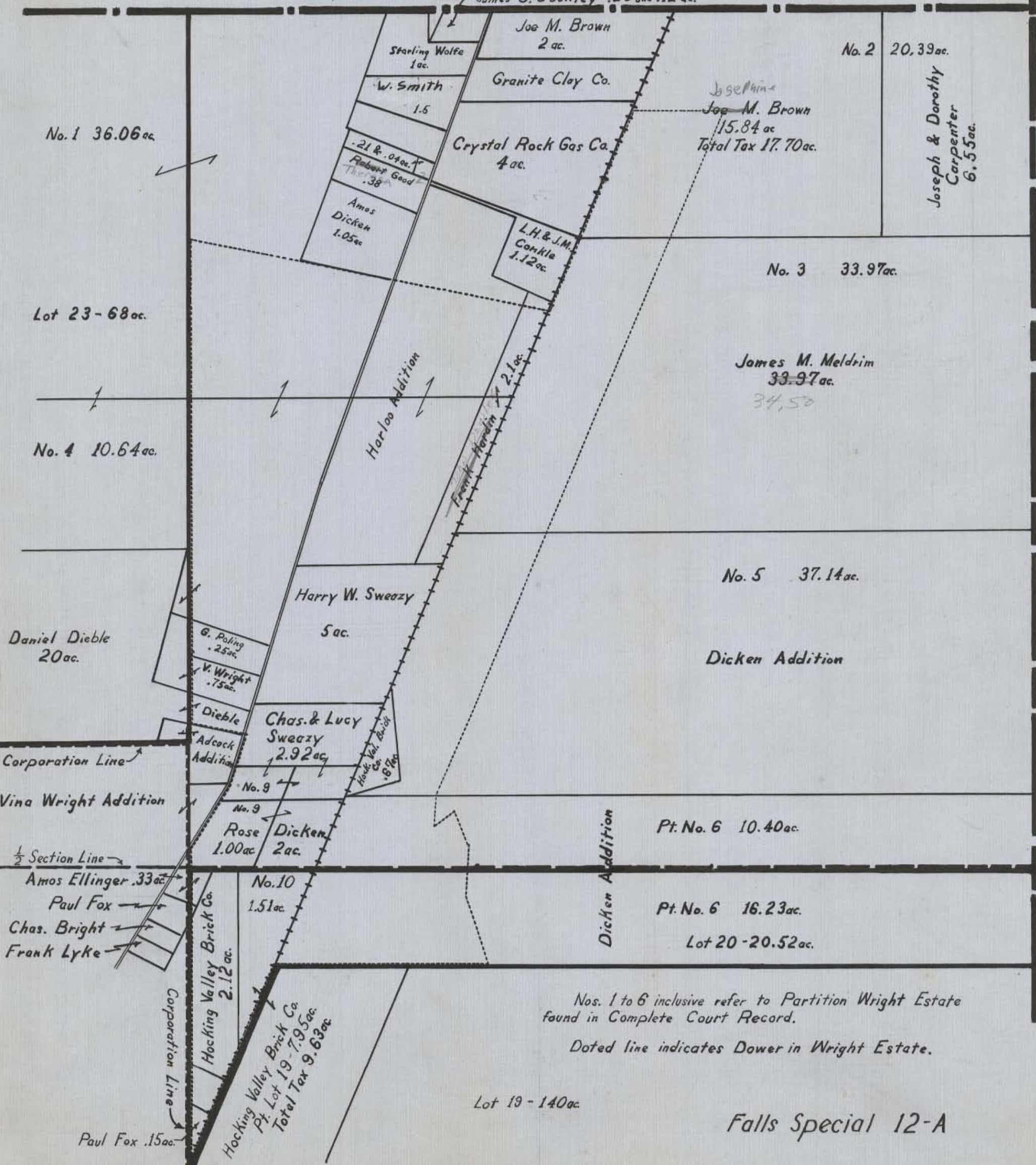
NE $\frac{1}{4}$ Section 12
Falls Special 12-A

Scale 1" = 300'

James G. Cookley .20 and .12 ac.

36
35

1



No. 1 36.06 ac.

Lot 23-68 ac.

No. 4 10.64 ac.

Daniel Dieble 20 ac.

Corporation Line

Vina Wright Addition

$\frac{1}{2}$ Section Line

Amos Ellinger .33 ac.

Paul Fox

Chas. Bright

Frank Lyke

Corporation Line

Paul Fox .15 ac.

Hocking Valley Brick Co.
2.12 ac.

Hocking Valley Brick Co.
Pt. Lot 19 - 7.95 ac.
Total Tax 9.63 ac.

Starling Wolfe 1 ac.

W. Smith 1.5

.21 & .04 ac.
Robert Good
Th. 38

Amos Dicken 1.05 ac.

L.H. & J.M. Conkle 1.12 ac.

Har-loo Addition

Frank Hardin 2.1 ac.

Harry W. Sweazy 5 ac.

G. Poling .25 ac.
V. Wright .75 ac.

Dieble
Adcock Addition

Chas. & Lucy Sweazy 2.92 ac.

Hock. Val. Brick Co. .67 ac.

No. 9

No. 9

Rose 1.00 ac.

Dicken 2 ac.

No. 10

1.51 ac.

Joe M. Brown 2 ac.

Granite Clay Co.

Crystal Rock Gas Co. 4 ac.

Josephine
Joe M. Brown 15.84 ac.
Total Tax 17.70 ac.

No. 2 20.39 ac.

Joseph & Dorothy Carpenter 6.55 ac.

No. 3 33.97 ac.

James M. Meldrim 33.97 ac.
34.50

No. 5 37.14 ac.

Dicken Addition

Pt. No. 6 10.40 ac.

Pt. No. 6 16.23 ac.

Lot 20 - 20.52 ac.

Dicken Addition

Nos. 1 to 6 inclusive refer to Partition Wright Estate found in Complete Court Record.

Dotted line indicates Dower in Wright Estate.

Lot 19 - 140 ac.

Falls Special 12-A

Green Twp. Line