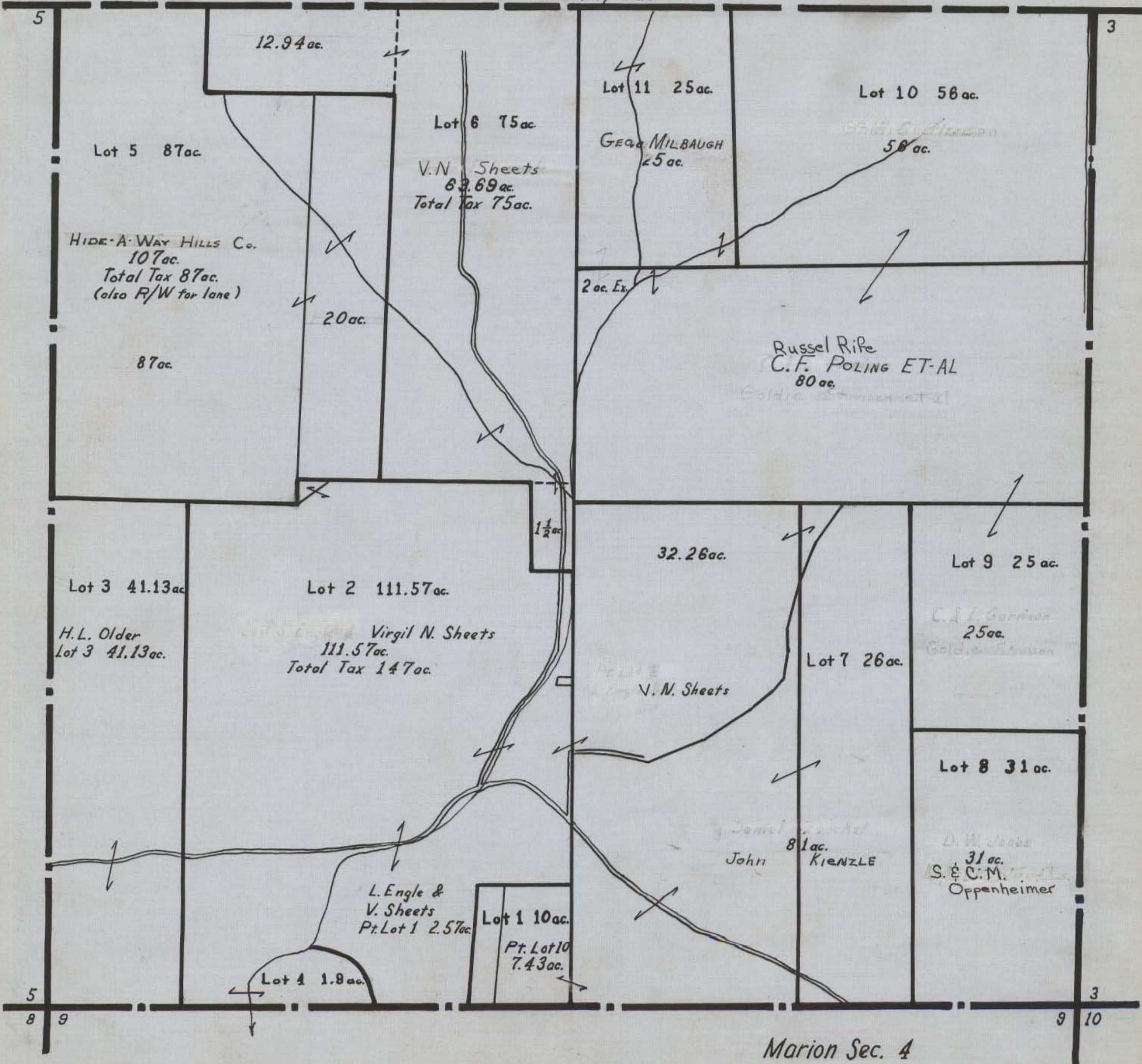


# HOCKING COUNTY STATE OHIO

OK 9/27/62

Section 4 Twp. 15 Range 17  
Marion Sec. 4

Fairfield County Line



12.94 ac.

Lot 5 87ac.

HIDE-A-WAY HILLS Co.  
107ac.  
Total Tax 87ac.  
(also R/W for lane)

87ac.

20ac.

Lot 6 75ac.

V.N. Sheets  
83.69ac.  
Total Tax 75ac.

Lot 11 25ac.

GEORGE MILBAUGH  
25ac.

Lot 10 56ac.

56 ac.

2 ac. Ex.

Russel Rife  
C.F. POLING ET-AL  
80 ac.

Lot 3 41.13ac.

H.L. Older  
Lot 3 41.13ac.

Lot 2 111.57ac.

Virgil N. Sheets  
111.57ac.  
Total Tax 147ac.

1 1/2 ac.

32.26ac.

V. N. Sheets

Lot 9 25 ac.

C. L. Garrison  
25ac.  
Golden Shanon

Lot 7 26ac.

John KENZLE  
81 ac.

Lot 8 31 ac.

D. W. Jones  
31 ac.  
S. & C. M. Oppenheimer

L. Engle &  
V. Sheets  
Pt. Lot 1 2.57ac.

Lot 1 10ac.

Pt. Lot 10  
7.43ac.

Lot 4 1.8ac.

Marion Sec. 4