

HOCKING COUNTY STATE OHIO

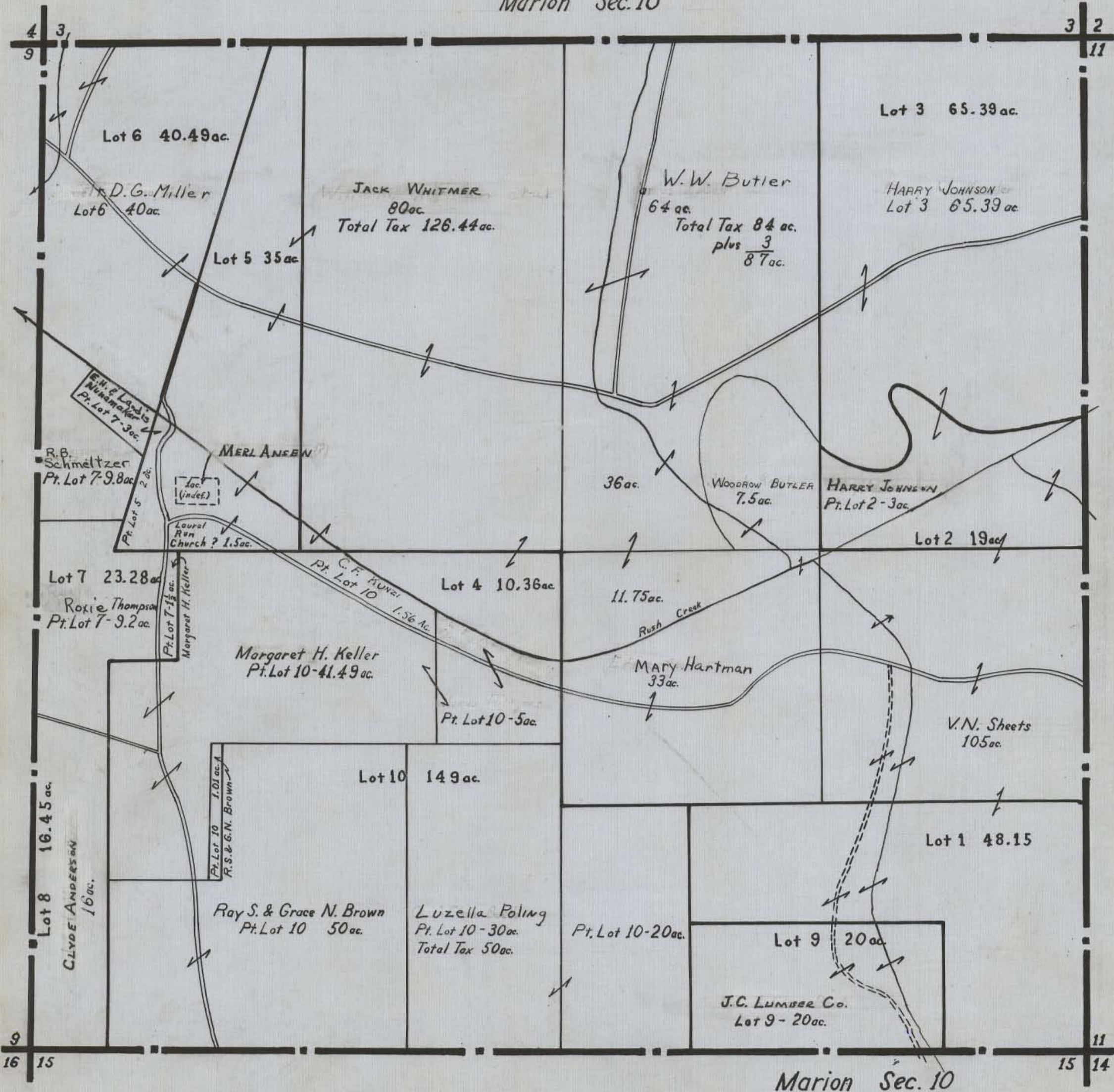
Section 10

Twp. 15

Range 17

OK 8/31/62

Marion Sec. 10



Lot 6 40.49 ac.

D.G. Miller
Lot 6 40 ac.

JACK WHITMER
80 ac.
Total Tax 126.44 ac.

W.W. Butler
64 ac.
Total Tax 84 ac.
plus $\frac{3}{87}$ ac.

Lot 3 65.39 ac.
HARRY JOHNSON
Lot 3 65.39 ac.

Lot 5 35 ac.

R.B. Schmeltzer
Pt. Lot 7-9.8 ac.

MERL ANSEN

1 ac.
(indef.)

Laurel Run Church? 1.5 ac.

36 ac.

WOODROW BUTLER
7.5 ac.

HARRY JOHNSON
Pt. Lot 2-3 ac.

Lot 2 19 ac.

Lot 7 23.28 ac.

Roxie Thompson
Pt. Lot 7-9.2 ac.

Pt. Lot 7- $1\frac{1}{2}$ ac.
Margaret H. Keller

Margaret H. Keller
Pt. Lot 10-41.49 ac.

C.F. KUNZ
Pt. Lot 10 1.56 ac.

Lot 4 10.36 ac.

11.75 ac.

Rush Creek

MARY Hartman
33 ac.

Pt. Lot 10-5 ac.

V.N. Sheets
105 ac.

Lot 8 16.45 ac.
CLYDE ANDERSON
16 ac.

Pt. Lot 10 1.01 ac. A
R.S. & G.N. Brown

Lot 10 149 ac.

Ray S. & Grace N. Brown
Pt. Lot 10 50 ac.

Luzella Poling
Pt. Lot 10-30 ac.
Total Tax 50 ac.

Pt. Lot 10-20 ac.

Lot 1 48.15

Lot 9 20 ac.

J.C. LUMBER CO.
Lot 9-20 ac.

Marion Sec. 10