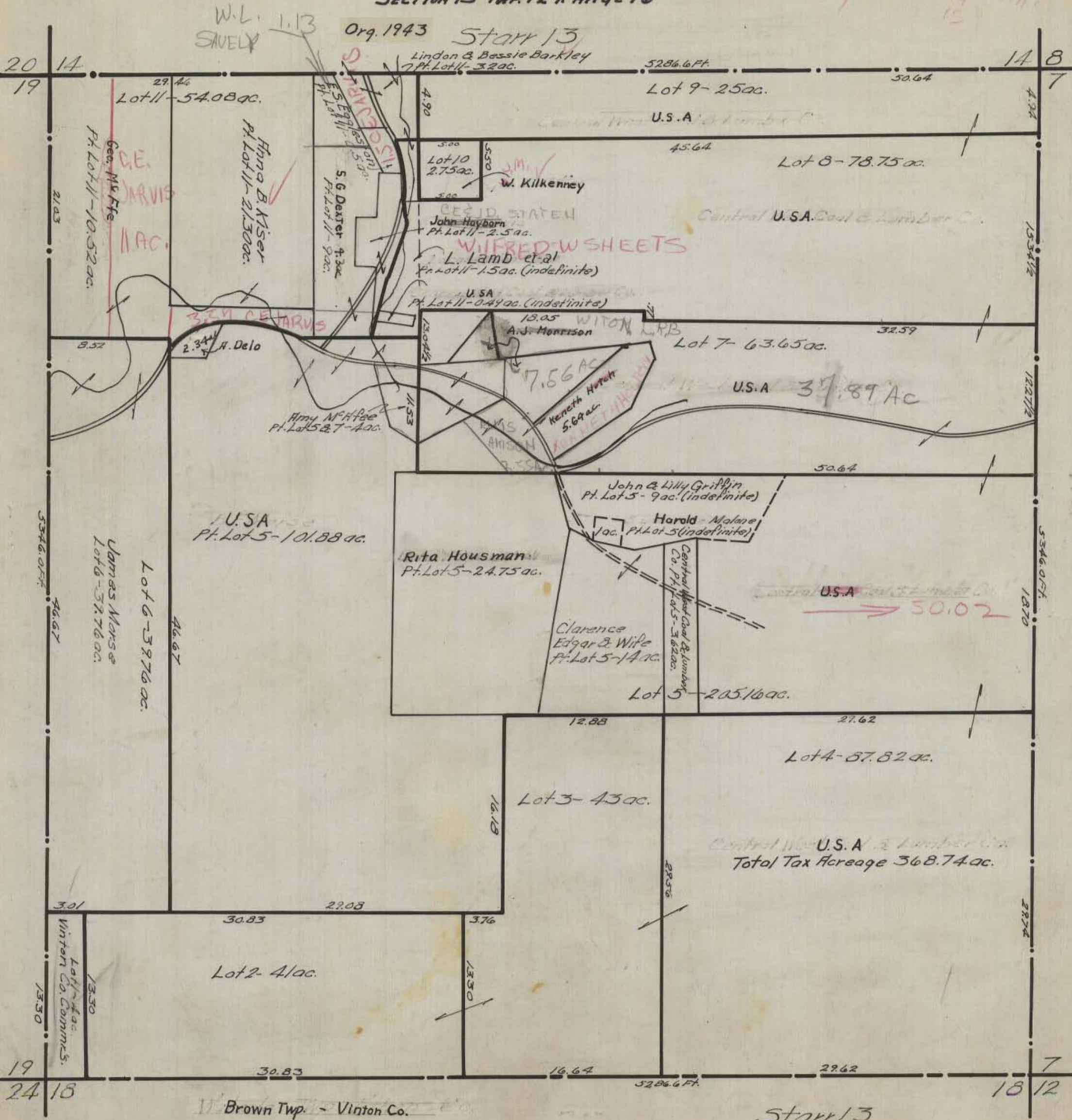


HOCKING COUNTY STATE OHIO  
SECTION 13 TWP 12 RANGE 16

99/447  
13  
14  
15



W.L. Savelly 1.13

Org. 1943 Starr 13  
Lindon & Bessie Barkley  
7 Pt. Lot 11 - 3.2 ac.

29.46  
Lot 11 - 54.08 ac.

5286.6 Ft.  
Lot 9 - 25 ac.

14 8  
7

Geo. Mc Fife  
Pt. Lot 11 - 10.52 ac.  
11 ac.  
Hina B. Kiser  
Pt. Lot 11 - 2.13 ac.

Lot 10 - 2.75 ac.  
W. Kilkenny

U.S.A.  
45.64  
Lot 8 - 78.75 ac.

John Hayborn  
Pt. Lot 11 - 2.5 ac.  
L. Lamb et al  
Pt. Lot 11 - 1.5 ac. (indefinite)

Central U.S.A. Coal & Lumber Co.

U.S.A.  
Pt. Lot 11 - 0.44 ac. (indefinite)

13.05  
A.J. Morrison

Lot 7 - 63.65 ac.

32.59

3.39 C. TARUS

H. DeLo

7.56 ac.  
Kenneth H. Hatcher  
5.69 ac.

U.S.A. 37.89 ac.

Amy McFife  
Pt. Lot 5 & 7 - 4 ac.

John & Lilly Griffin  
Pt. Lot 5 - 9 ac. (indefinite)

Harold Malone  
1 ac. Pt. Lot 5 (indefinite)

U.S.A.  
Pt. Lot 5 - 10.88 ac.

Rita Housman  
Pt. Lot 5 - 24.75 ac.

Clarence  
Edgar & Wife  
Pt. Lot 5 - 14 ac.

Lot 5 - 205.16 ac.

U.S.A. 50.02

James Morse  
Lot 6 - 39.76 ac.

Lot 4 - 87.82 ac.

Lot 3 - 43 ac.

Central U.S.A. Coal & Lumber Co.  
Total Tax Acreage 368.74 ac.

Lot 2 - 4 ac.

13.30  
Vinton Co. Comm's.

30.83

16.64

29.62

19 24 18

7 18 12

Brown Twp. - Vinton Co.

Starr 13