

HOCKING COUNTY STATE OHIO

SECTION No. 1 TWP. 13 RANGE 15

Original A.W. 5. June 6 1938

WARD

NORTH

SCALE: 500 FEET TO 1 INCH

Trimble Twp.
Athens Co.
32

31
Trimble Twp.
Athens Co.

8 2

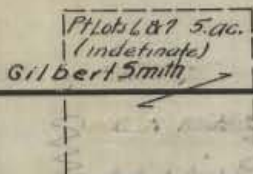
7

80.00

29.00

29.00

Lot 7 232 ac.



80.00

U.S. America Pt Lots 6 & 7 344 ac.
New York Coal Co Lot 1 & Pt Lot 6 141 ac.
Total 485 ac.

Lot 6 242.36 ac.

WEST

32.75

EAST

Clyde McCulloch
Pt Lot 2 5 1/2 ac.
Tax acreage 5 ac.

N 77° 30' E 40.91

40.00

0.80 2.25

Lot 2 104.88 ac.

U.S. Gov't Pt Lots 2-3-4-5 161.2 ac.
(Note deed overlaps private property)

Lot 3 40.64 ac.

Lot 4 29.76

23.11

1.5604

Lot 1

3.75 ac.

Christina Phillip

Pt Lot 4-5

1.04

Total Tax Acreage 4.75 ac.

.38 ac.

.5 ac.

MARY LOY
G. WILLIAMS
Loretta Donley
Total Tax Acreage 1.03 ac.

37.30

0.45

30.25

12.00

SOUTH

WARD 1

36
Dover Twp.
Athens Co.

12
York Twp.
Athens Co.

6
York Twp.
Athens Co.

R. L. GALENTIN GALENTIN

ROY DAVIS
1.72 ac.

Pt Lot 2

2.44 ac.

R.V. Oakley

indefinite

Pt Lot 2

1.1 ac.

R.V. Oakley

N.Y. Coal Co.

Pt Lot 2

Pt Lot 2 9.58 ac.
John & Mary De Stege
Less 6 ft Strip to Commissioners
Total Tax Acreage 10 ac.

Lot 1 15.92 ac.
And additional .5 ac.
(indefinite)

John De Stege (Modly Athens Co.)

HOCKING COUNTY STATE OHIO

SECTION No. 2 TWP. 13 RANGE 15

WARD

NORTH

SCALE: 500 FEET TO 1 INCH

Original Corrected by A.W.S. June 7 '38

Trimble Twp
Athens Co
33

9 3

30.50

58.60

9.24

12.16

Pt. Lot 3 4.50 ac
Sunday Cr. Coal Co

Lot 1 9 ac
SUNDAY CREEK
COAL CO. et al

32
Trimble Twp
Athens Co

U.S. America Pt Lot 3 174.5 ac.

Lot 2 54.18 ac
Sunday Creek Coal Co

Lot 3 178.73 ac.

21.50

58.60

21.40

34.28 1/2

WEST

30.62 1/2

Lot 4 140 ac.

Lot 6 52.5 ac.

11.0 1/2

EAST

15.31 1/2

30.62 1/2

15.31 1/2

34.28

U.S. America Pt Lots 5 & 6; Lot 4 402 ac.

C. & O. RR 3.28 ac. (tax dupl) and
L. RUTHERFORD
5 ac (tax dupl)
Sub. 6.21 ac.
37.18 1/2

45.71 1/2

Lot 5 227.50 ac.

8

80.00

SOUTH

WARD 2

7 1

31
Trimble Twp
Athens Co.

HOCKING COUNTY STATE OHIO

Original Corrected AWS June 10 1938

SECTION NO. 3 TWP. 13 RANGE 15

WARD NORTH

SCALE: 500 FEET TO 1 INCH

Trimble Twp. Athens Co 34

33 Trimble Twp. Athens Co.

32 Trimble Twp. Athens Co.

10
9

A

8

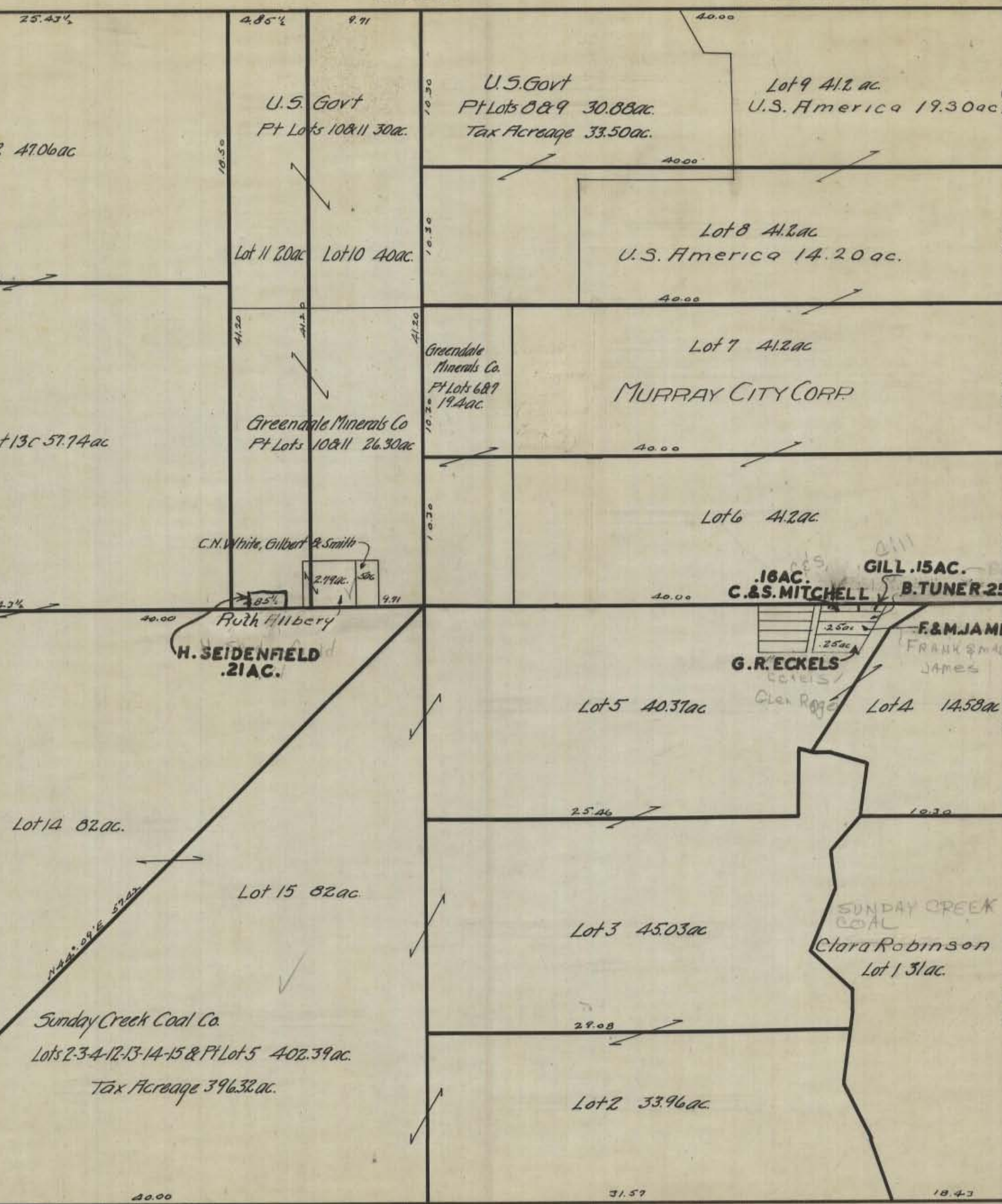
2

SOUTH

WARD 3

WEST

EAST



Lot 12 47.06 ac

U.S. Govt
Pt Lots 10 & 11 30 ac.

U.S. Govt
Pt Lots 8 & 9 30.88 ac.
Tax Acreage 33.50 ac.

Lot 9 41.2 ac
U.S. America 19.30 ac

Lot 8 41.2 ac
U.S. America 14.20 ac.

Lot 7 41.2 ac
MURRAY CITY CORP.

Lot 13c 57.74 ac

Greendale Minerals Co
Pt Lots 10 & 11 26.30 ac

Greendale Minerals Co.
Pt Lots 6 & 7 19.4 ac.

Lot 6 41.2 ac

C.N. White, Gilbert & Smith
Ruth Hilbery
H. SEIDENFIELD
.21 ac.

.16 ac. C.&S. MITCHELL
GILL .15 ac.
B. TUNER 25 ac.
F.&M. JAMES
FRANK JAMES

Lot 5 40.37 ac

Lot 4 14.58 ac

Lot 14 82 ac.

Lot 15 82 ac

Lot 3 45.03 ac

SUNDAY CREEK COAL
Clara Robinson
Lot 1 31 ac.

Sunday Creek Coal Co.
Lots 2-3-4-12-13-14-15 & Pt Lot 5 402.39 ac.
Tax Acreage 396.32 ac.

Lot 2 33.96 ac

HOCKING COUNTY STATE OHIO

Corrected Original A.W. 5 June 13, 1938

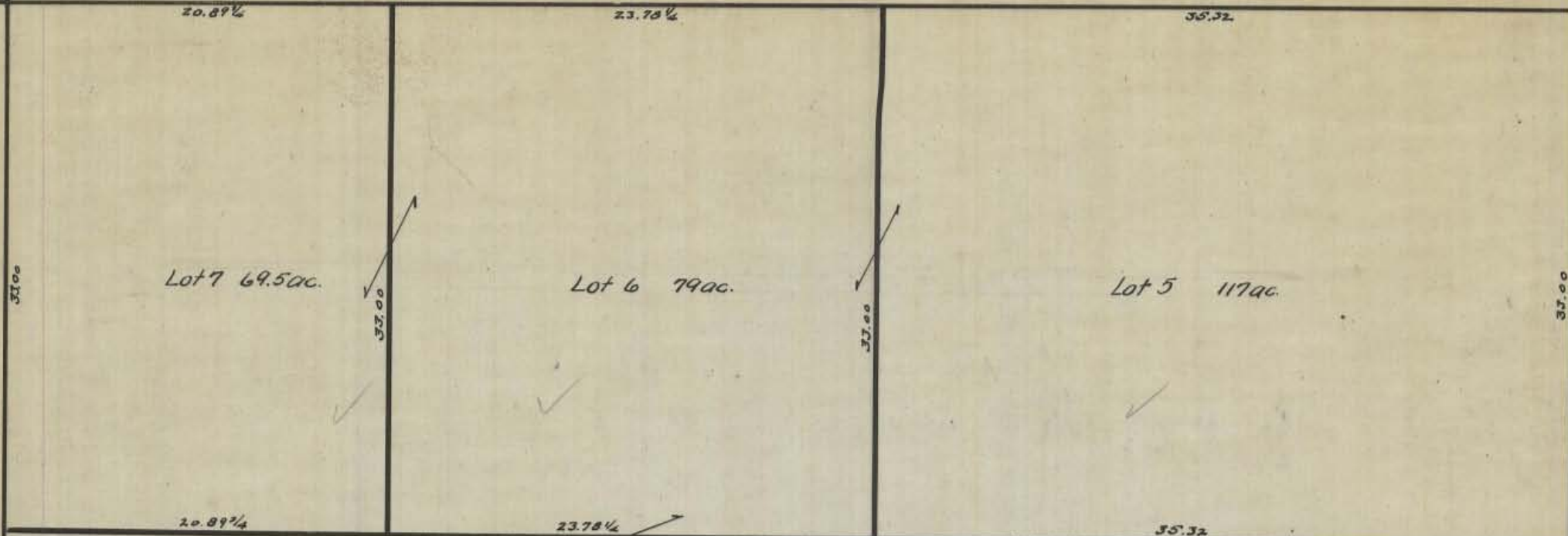
SECTION No. 4 TWP. 13 RANGE 15
WARD

NORTH

SCALE: 500 FEET TO 1 INCH

11 5
10

Trimble Twp
Athens Co
35
Trimble Twp
Athens Co
34



WEST

EAST

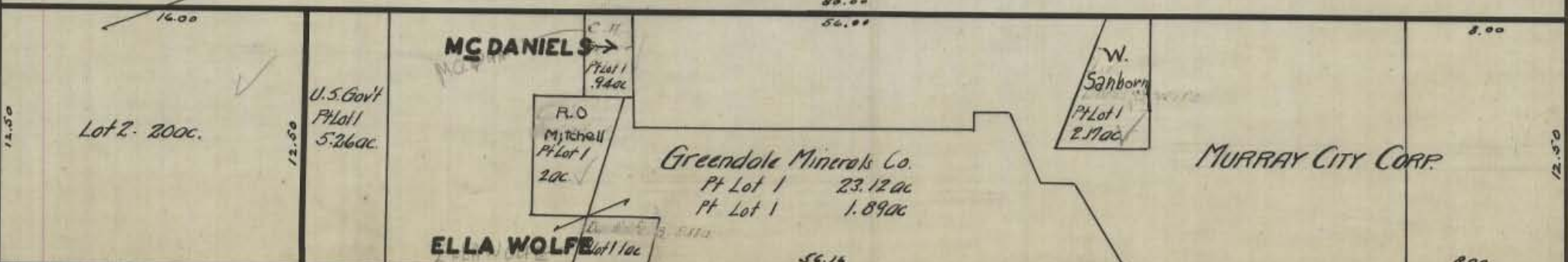
Lot 4 200 ac

Sunday Creek Coal Co
Pt Lots 3-4 113.92 ac.
Lots 2-5-6-7 Pt Lots 3-4 459.54 ac.
Total Tax Acreage 573.46 ac.
Total Deed Acreage 589.67 ac.

Lot 3 100 ac.

12.50

12.50



9 3

SOUTH

WARD 4

Trimble Twp
Athens Co
33

Original Corrected June 13 1938

NORTH

SCALE: 500 FEET TO 1 INCH

Trimble Twp
Athens Co
36

12
11

6

35
Trimble Twp
Athens Co

Sunday
Creek
Coal
Co.
2.10ac
Indefinite

The Sunday Creek Coal Co
W 1/2 NW 1/4 82 ac.

ADA C. M. de Acker et al
E 1/2 NW 1/4 82 ac.
Royalty

ADA M. Acker et al

Kieffer, Willard & MABLE
Loretta

WILLARD & MABLE LORETTA KIEFFER
Pt NE 1/4 133.28 ac.
Royalty

Pt NE 1/4 24.3 ac.

William Wright

BEATRICE
BEATRICE

WEST

EAST

Lot 3 93.40 ac

Lot 2 93.4 ac

Lot 1 140 ac

U.S.A. Grummond
Lots 1-2-3 - 386 ac.
Royalty

10 5

SOUTH

WARD 5

34
Trimble Twp
Athens Co

Original AWS June 14 1938.

Sec. 35 Coal Twp Perry Co.

NORTH Sec. 36 Coal Twp Perry Co.

SCALE: 500 FEET TO 1 INCH

12

36
Trimble Twp
Athens Co.

Lot 1 65.45ac
Sunday Creek Coal Co. Lot 1 & 5 102.75 (Tax Acreage)

Lot 6 105ac
Sunday Creek Coal Co
deed acreage 108ac.

Lot 2 120.85ac
DUNLAP & Dunlap 115.50ac (Tax acreage) ?
(Working Int.)

Lot 5 40ac

WEST

EAST

Lot 3 165ac

MAUDE McComas
Pt Lot 3 47.50ac
(Royalty)

Sunday Creek Coal Co
Pt Lot 3 114ac

MAUDE McComas

80.00

Lot 4 166ac
ADA C. M. Acher et al 162ac. (Tax Acreage)

Ach Mr. Acher et - 21

80.00

SOUTH

WARD 6

11 5

35
Trimble Twp
Athens Co.

HOCKING COUNTY STATE OHIO
SECTION No. 7 TWP. 13 RANGE 15

A.W. Seabright Original June 18 1938

WARD.

NORTH

SCALE: 500 FEET TO 1 INCH

11

8

2

13

1

2.66⁷/₈

72.00

Lot 1 7¹/₂ ac.

9.978

Lot 3 335¹/₂ ac

U.S. America 339¹/₂ ac Tax Acreage Lots 1 & 3.

80.68

WEST

EAST

Greendale Minerals Co(?)

Pt Lot 4
14.98 ac?

Lawrence & Enola Whitmore
Pt Lot 4 7.7 ac

FOUN. CHY & TRK

Lot 4 241.61 ac

U.S. Gov't (deed acreage 203.11 ac)
Pt Lot 4 218.09 ac (Tax duplicate)

22.73

Pt Lot 4
7.71 ac.

Foster Conner
Lot 2 99 ac.

.34 ac. Max Collins

REG & N.M. WITHEM

CAROLINE & RALPH WOODS

Pt Lot 4
6 ac.

Delong
DELONG

38.09

Blance Deering
1 ac
Pt Lot 4

MOHNEY

RAY
Culvert
Pt Lot 4
1.17 ac

SHAW
1.9 ac

C.&M.
McQuaid

Christina Phillips
(See Sec. 1.)

22.59

SOUTH

WARD 7

18

12

6

York Twp
Athens Co

York Twp
Athens Co

York Twp
Athens Co

HOCKING COUNTY STATE OHIO

SECTION No. 8 TWP. 13 RANGE 15

Original A.W.S. June 20 1938

WARD

NORTH

SCALE: 500 FEET TO 1 INCH

15 9
14

3
2

40.60

20.30

20.30

41.30

NW 1/4 16.8ac

41.50

W 1/2 NE 1/4 84ac

41.60

E 1/2 NE 1/4 84.60ac

41.70

The Sunday Creek Coal Co 421ac

U.S. America 254ac

WEST

EAST

20.33

20.33

20.33

20.33

41.30

W 1/2 SW 1/4 79 1/2 ac.

41.40

E 1/2 SW 1/4 84ac

41.50

W 1/2 SE 1/4 84ac.

41.60

E 1/2 SE 1/4 84.73ac

41.70

20.36

20.36

20.36

20.36

13 7

SOUTH

WARD 8

1

HOCKING COUNTY STATE OHIO
SECTION No. 9 TWP. 13 RANGE 15
WARD

Original A.W. 5 June 20 1938

NORTH

SCALE: 500 FEET TO 1 INCH

4

3

16

10

24.32

55.68

Lot 3 56.71ac

Lot 4 91.29ac

18.57

18.50

37.81

42.19

The Sunday Creek Coal Co 653.92ac

Lot 2 243ac

Lot 5 195ac

WEST

EAST

64.00

46.40

64.00

46.45

42.38

Lot 1 74ac

17.50

17.50

37.81

42.38

SOUTH

WARD 9

2

14

9

HOCKING COUNTY STATE OHIO
SECTION No. 10 TWP. 13 RANGE 15
WARD

Original A.W.S. June 20 1938

SCALE: 500 FEET TO 1 INCH

17 11 NORTH 5
16 4

Lot 3 17 ac.

Lot 4 100 ac.

Lot 2 271 ac
The Sunday Creek Coal Co 661.56 ac.

Lot 5 30 1/2 ac

Lot 1 9 1/2 ac.

15 9 SOUTH WARD 10 3

WEST

EAST

33.87

33.87

15.26

40.50

40.00

25.00

25.00

8.68

80.00

40.00

80.00

17.69

24.32

55.68

15.26

Original A.W.S. June 20 1938

HOCKING COUNTY STATE OHIO
SECTION No. 11 TWP. 13 RANGE 15
WARD

18 12 NORTH SCALE: 500 FEET TO 1 INCH 6
17 80.50 5

$1\frac{1}{2}$ 328 $\frac{3}{4}$ ac.

WEST

EAST

20.42 $\frac{1}{2}$

20.42 $\frac{1}{2}$

55.34 $\frac{1}{3}$

Lot 3 113 ac.

55.34 $\frac{1}{3}$

Lot 2 113 ac.

55.34 $\frac{1}{3}$

80.50

The Sunday Creek Coal Co 653.65 ac

25.15 $\frac{2}{3}$

20.42 $\frac{1}{2}$

40.85

20.42 $\frac{1}{2}$

Lot 1 102 $\frac{3}{4}$ ac.

40.85

25.15 $\frac{2}{3}$

16 10

SOUTH

WARD 11

4

HOCKING COUNTY STATE OHIO

A.W.S. Original Aug 25 '38

SECTION No. 12 TWP. 13 RANGE 15

WARD

Coal 34

NORTH

Coal 35

SCALE: 500 FEET TO 1 INCH

18

6

40.40

20.20

20.20

NW 1/4 of NE 1/4 41.80 ac.

Lot 1 29.90 ac.
Sunday Creek Coal Co
Tax Acreage 25 ac.

U.S. America Tax acreage 209 ac
NW 1/4 166.48 ac.

SW 1/4 of NE 1/4 41.90 ac.

Lot 2 53.79 ac.
DUNLAP Dunlap + Dunlap
(Tax Acreage 54 ac)

WEST

EAST

20.25

20.25

20.24

NW 1/4 of SE 1/4 41.85 ac.

Sunday Creek Coal Co
Deed Acreage 367.41 ac.
Map " 384.13 ac.
Tax " 372.97 ac.
W 1/2 of SW 1/4 83 ac.
Lot 4 81 ac
Royalty

Lot 3
1.21 ac.

E 1/2 of SE 1/4 83 1/2 ac.

SW 1/4 of SE 1/4 41.67 ac.

Lot 5
1.00
2.75

17 11

SOUTH

WARD 12

11 5

Orig. A.W.S Oct 7 '38

HOCKING COUNTY STATE OHIO
SECTION No. 13 TWP. 13 RANGE 15
WARD

SCALE: 500 FEET TO 1 INCH

20 14
19

8
7

NORTH

42.22

37.54

Lot 3 80.17ac.

Lot 2 160ac.

U.S. Gov't
Tax Acreage 269ac.

U.S. America
Tax Acreage 156ac.

41.40

42.60

42.60

WEST

EAST

21.0

42.46

68.67

37.56

42.60

Lot 1 249ac.

Lot 4 89 1/4 ac.

U.S. America
Tax Acreage 250ac.

41.40

19

7

SOUTH

21.0

58.67

York Twp Athens County
24 18

WARD 13

12
York Twp
Athens Co

Original A.W.S. Sept 22 1938

WARD
NORTH

SCALE: 500 FEET TO 1 INCH

21 15

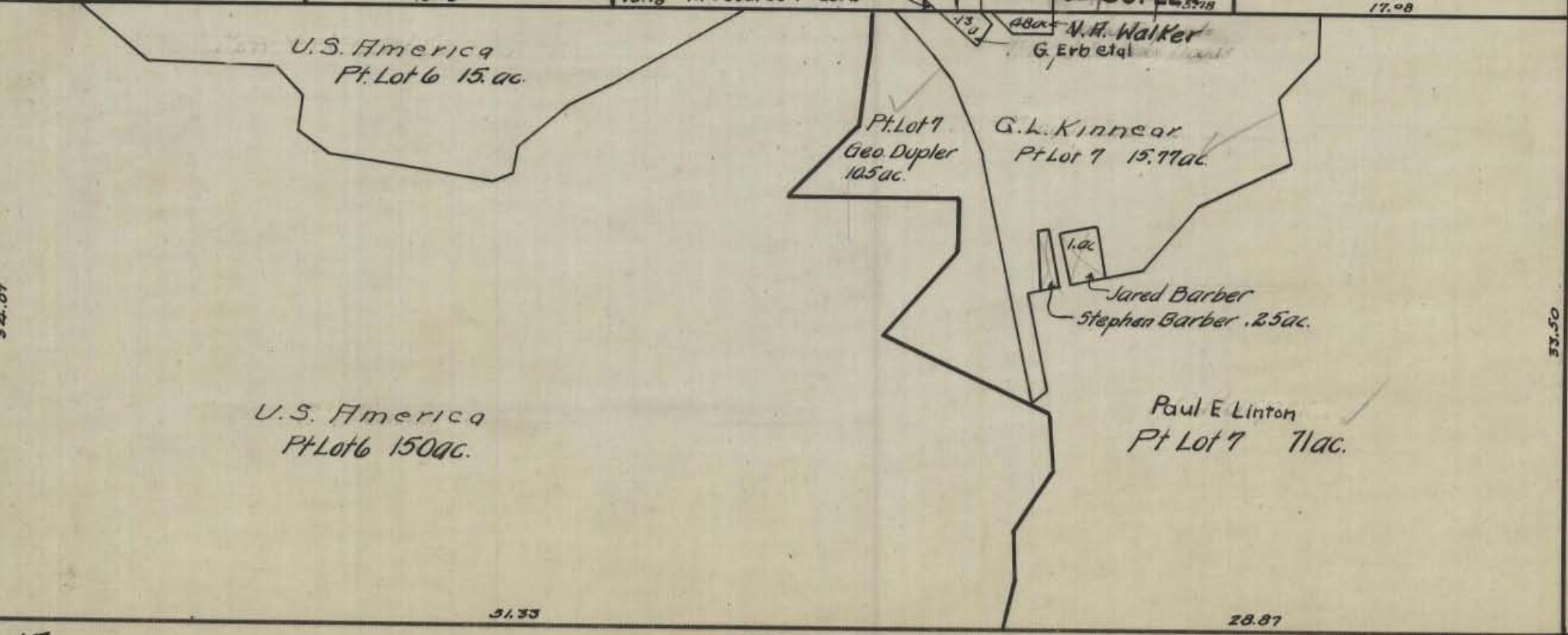
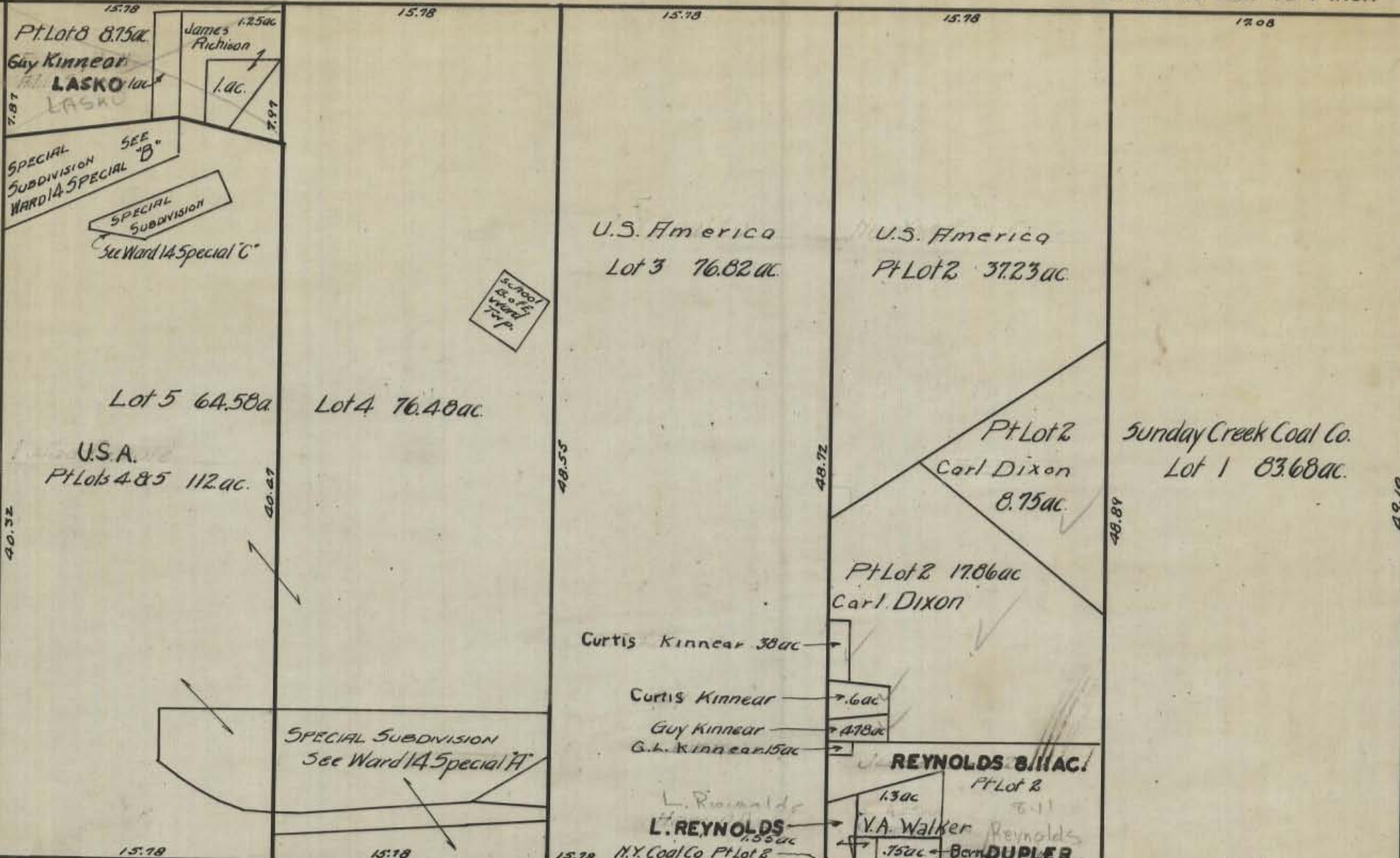
20

9

8

WEST

EAST



20

19

13

SOUTH

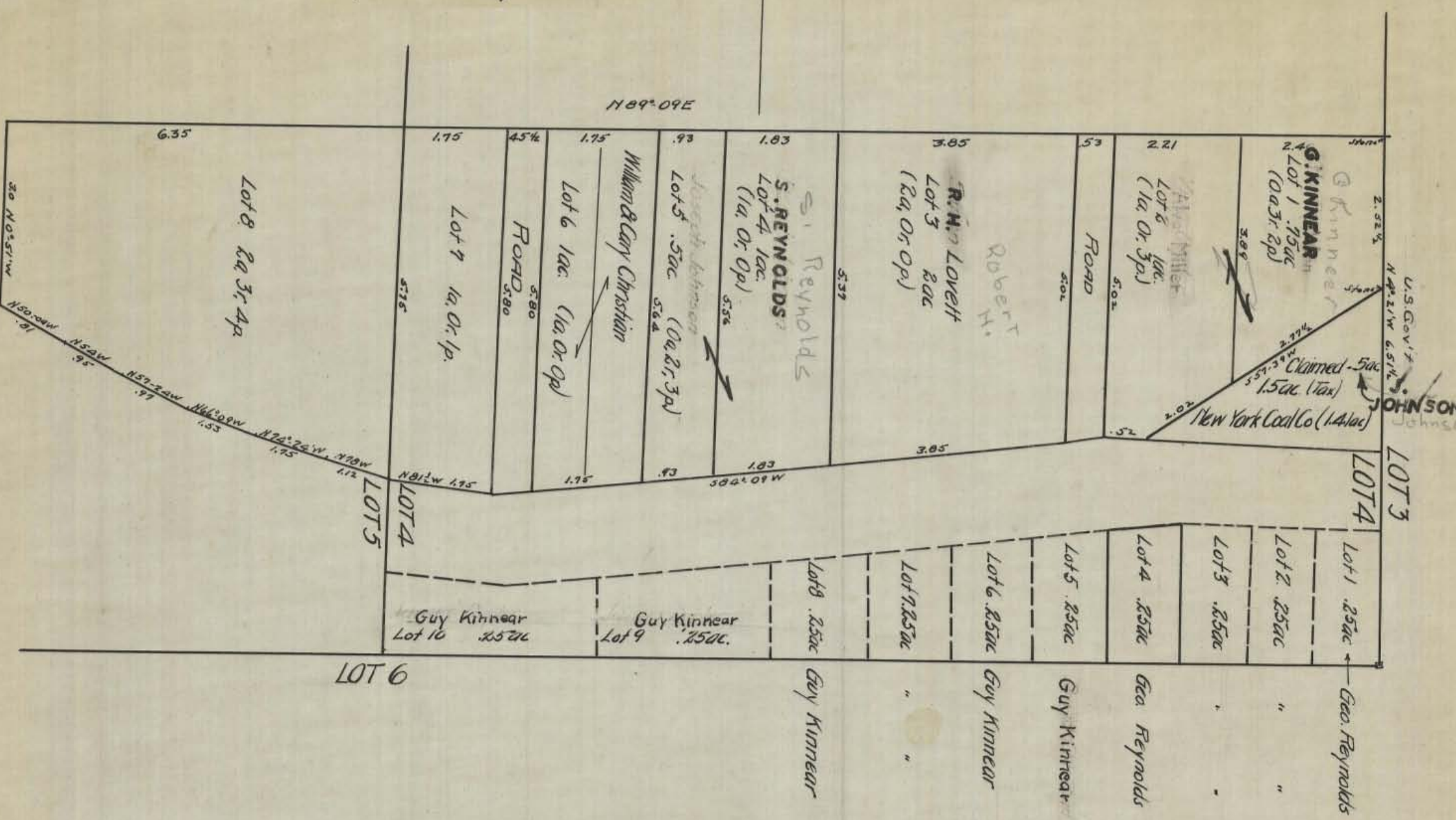
WARD 14 See Specials
Ward 14 A-B-C

8

7

Original A.W.S. Sept 24, 1938.

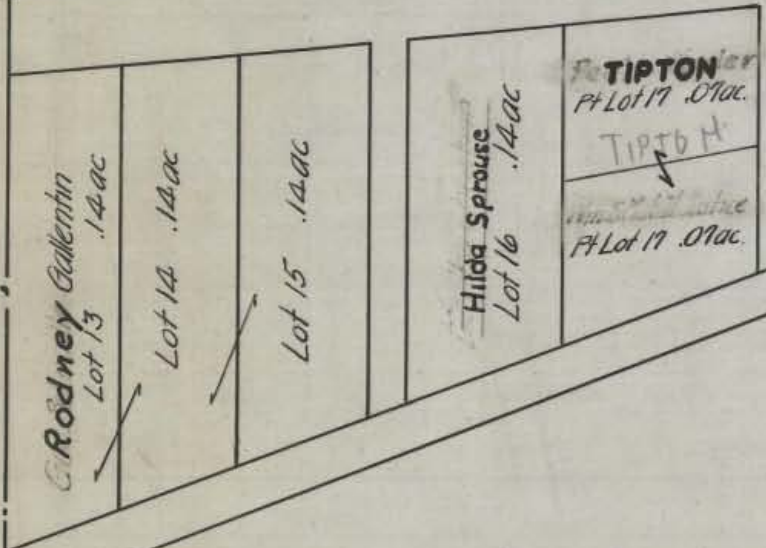
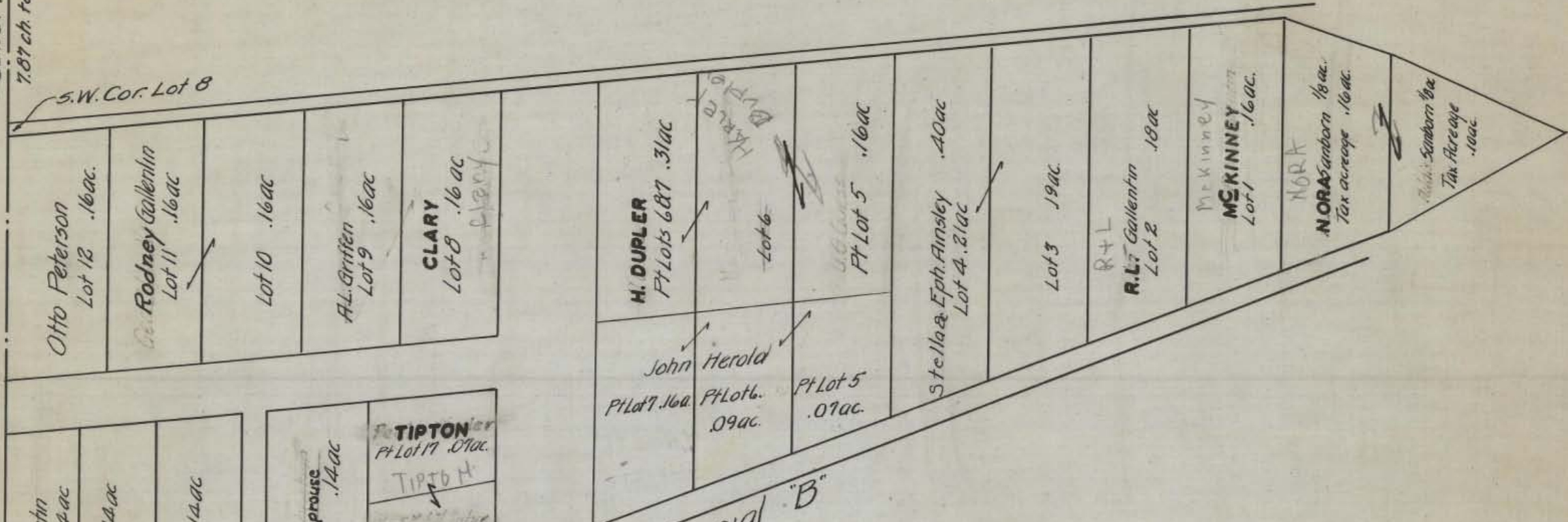
N 89° 09' E



SUBDIVISION PART LOT 4
 Sec. 14, Ward Twp.

See Pg 456 Bk A (orig) or Pg 406 Bk A (Copy) Records Office
 Note (An unrecorded subdivision is shown in dash lines. (Diagrammatic))

WARD 14 Special "A"

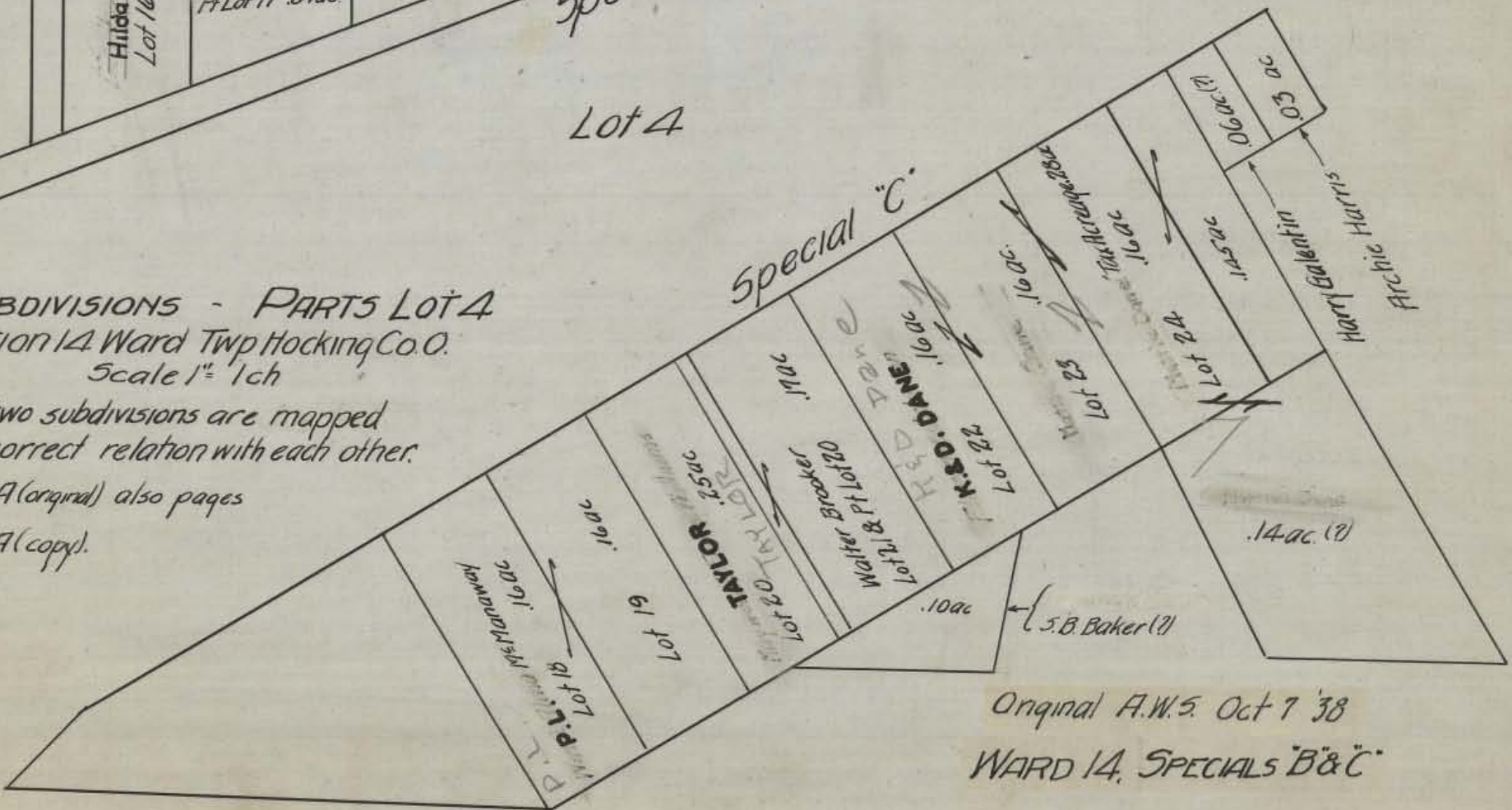


Special "B"

Lot 4

TWO SUBDIVISIONS - PARTS LOT 4
 Section 14 Ward Twp Hocking Co. O.
 Scale 1" = 1 ch

Note - These two subdivisions are mapped
 in their correct relation with each other.
 See Page 259 Bk A (original) also pages
 405-431 Bk A (copy).



Special "C"

Original A.W.S. Oct 7 '38
 WARD 14, SPECIALS "B" & "C"

HOCKING COUNTY STATE OHIO

Original A.W.S. Oct 7 1938

SECTION No. 15 TWP. 13 RANGE 15

WARD

NORTH

SCALE: 500 FEET TO 1 INCH

22 16
21

10
9

35.0

45.0

Lot 7 89.25ac.

U.S. America
Tax Acreage 146ac.

U.S. Gov't
Lot 6 217.4ac.

40.0

U.S. America
Lot 8 170ac.

Lot 9
32ac.

WEST

EAST

62.00

62.00

42.50

42.50

64.00

15.86

15.76

15.56

40.0

15.48

12.38

Lot 5 32.29ac.

Lot 4 32.29ac.

Lot 3 31.49ac.

Lot 2 31.49ac.

Lot 1 24.52ac.

Lee Rutherford
Tax 32ac.

U.S.A.
Tax 31ac.
Archie & Harrietta
Harris 1ac.

U.S. America
Tax Acreage 63ac.

21 ? ← Herbert Griffin 1/4
15.78

← Carl Harris 1/4
15.78

15.78

15.78

12.08

5.0

20 14

SOUTH

WARD 15

9
8

HOCKING COUNTY STATE OHIO

SECTION No. 16 TWP. 13 RANGE 15

Original A.W.S Oct 7 '38

WARD

NORTH

SCALE: 500 FEET TO 1 INCH

23 17

22

11

10

40.0

40.0

20.75

83ac

83ac

20.75



83ac

83ac

Sunday Creek Coal Co
Tax Acreage 576.64ac

WEST

EAST

Cleveland Trust Co. 1/2 Int.
Geo. Jurgensmeyer J.W. Green 1/4 Int.
Chas. Shultz 1/4 Int.
all have (Royalty)
Pt Lot 6 83ac

83ac

1/2a Cemetery (indefinite)

83ac

83ac

22

21

15

40.0

SOUTH

40.0

WARD 16

10

9

Original A.W.5 Oct 7 '38

WARD
NORTH

SCALE: 500 FEET TO 1 INCH

24 18
23

12
11

Lot 1 55ac

Lot 2 55ac

Lot 3 55ac

165.5ac

Sunday Creek Coal Co
659.13ac

WEST

EAST

23
22 16

11
10

SOUTH

WARD 17

13.50

13.50

13.50

40.50

41.0

40.97

40.95

40.92 1/2

40.85

13.50

20.25

20.25

40.50

41.0

40.96

40.92 1/2

40.85

82.88ac

82.80ac.

165.4ac.

20.20

20.20

40.40

33 Coal Twp

Original AWS Oct 28, 1938

WARD
NORTH

Coal Twp 34

SCALE: 500 FEET TO 1 INCH

24

12

19.90

19.90

39.80

U.S. Gov't

159.18 ac.

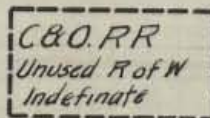
W 1/2 NW 1/4 81.5 ac

E 1/2 NW 1/4 81.5 ac

NE 1/4 163.75 ac



Tracy Heirs (Royalty)
Hope Construction Co.
(Working Int)



WEST

EAST

20.0

20.0

20.0

40.0

20.0

20.39

NW 1/4 SW 1/4 41 3/4 ac

Ohio Mining Co (Royalty)

Sunday Creek Coal Co 487.44 ac

E 1/2 SW 1/4 82 ac

W 1/2 SE 1/4 82 ac

E 1/2 SE 1/4 82 ac

20.12

40.98

41.08

41.18

SW 1/4 SW 1/4 41 3/4 ac

(Royalty)
Kachelmacher Estate

20.39

20.44

24

12

20.25

20.25

20.25

20.25

23 17

SOUTH

WARD 18

17 11

Orig AW. 5 Oct 29 1938

WARD

NORTH

SCALE: 500 FEET TO 1 INCH

26 20

14

25

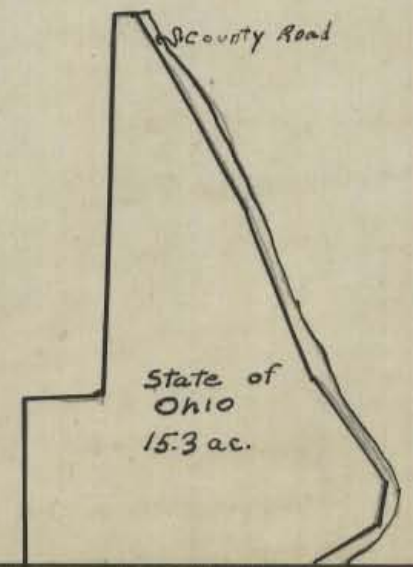
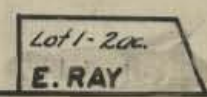
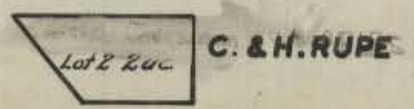
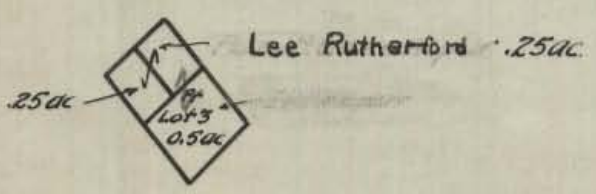
13

81.40

U.S. Gov't 673.67ac (Tax Duplicate)
686.69ac (Deed)

WEST
80.78

EAST
84.80



25

13

24.0

SOUTH 81.40

30 York
24 York Athens Co

WARD 19

24 York
18 York Twp Athens

Orig. A.W. 5 Nov 5 1938

WARD
NORTH

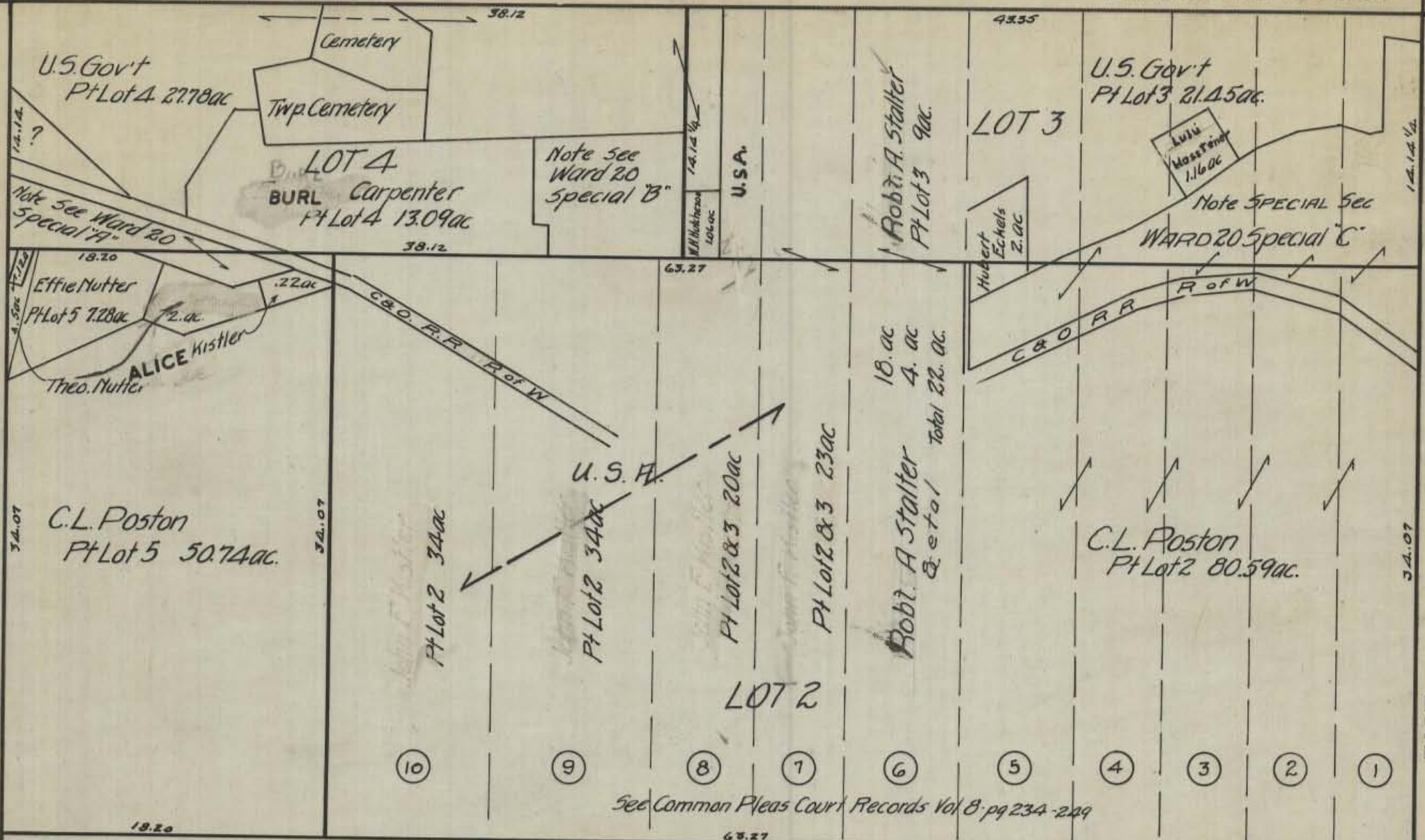
SCALE: 500 FEET TO 1 INCH

27 21

21 15

26

14



WEST

EAST

See Common Pleas Court Records Vol 8, pg 234-249

U.S. America
Lot 1 275.04 ac.

26

14

25 19

SOUTH

WARD 20
See Special A-B-C
19 13

HOCKING COUNTY STATE OHIO

SECTION No. 20 TWP. 13 RANGE 15

WARD 20 Special "A"

LOT 4

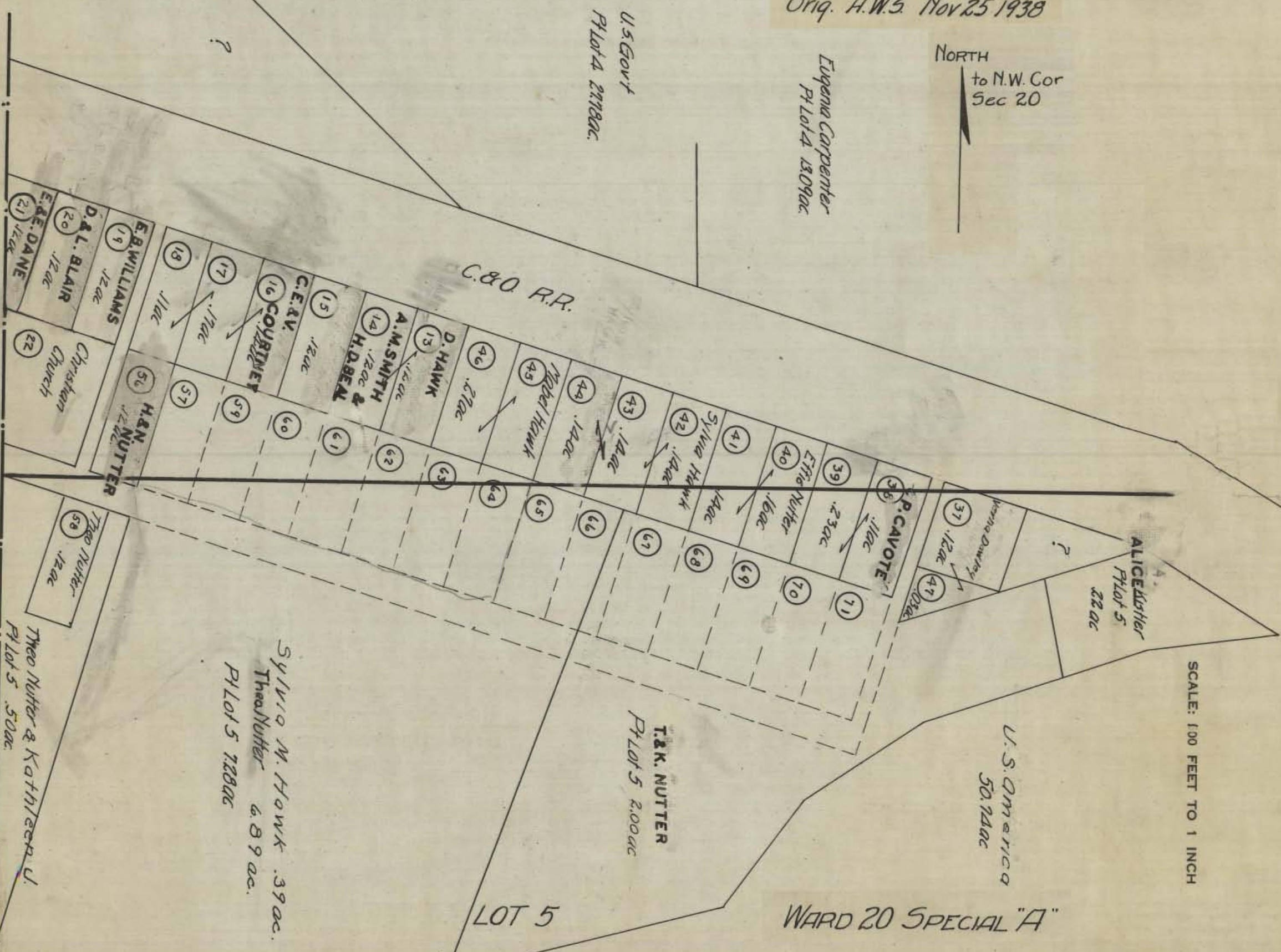
Orig. A.W.S. Nov 25 1938

NORTH
to N.W. Cor
Sec 20

U.S. Govt
Pl Lot 4 2178 ac.

Eugenia Carpenter
Pl Lot 4 1309 ac.

C.&O. R.R.



21
E.A.E. DANE
.12 ac

20
D.A.L. BLAIR
.12 ac

19
E.B. WILLIAMS
.12 ac

18
.11 ac

17
.17 ac

16
COUBINEY

15
C.E. RY
.12 ac

14
A.M. SMITH & H.D. BEN
.12 ac

13
D. HAWK
.27 ac

12
Mabel Hawk
.45 ac

11
Sylvia Hawk
.14 ac

10
Ethel Nutter
.16 ac

9
P. CAVOTE
.11 ac

8
Alice Kehler
Pl Lot 5
22 ac

7
T.K. NUTTER
Pl Lot 5
2.00 ac

6
U.S. America
50.71 ac

5
Theo Nutter & Kathryn U.
Pl Lot 5
.50 ac

4
Theo Nutter
.12 ac

3
H.N. NUTTER
.12 ac

2
Christian Church

Sylvia M. Hawk .39 ac.
Theo Nutter 6.89 ac.
Pl Lot 5 728 ac

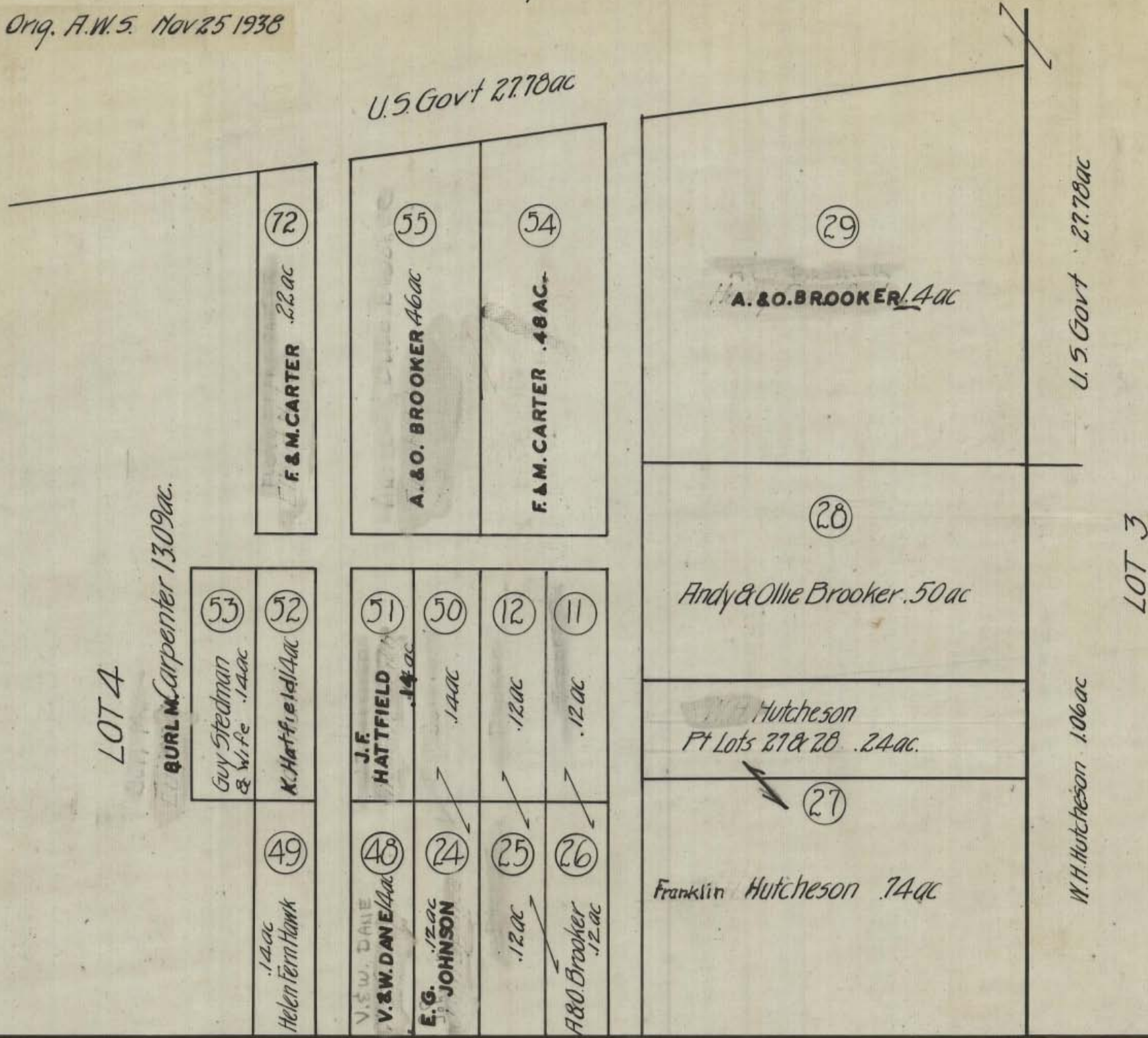
SCALE: 100 FEET TO 1 INCH

WARD 20 SPECIAL "A"

LOT 5

Ward Special B

Orig. A.W.S. Nov 25 1938



LOT 4

BURL M. CARPENTER 1309 ac.

U.S. Govt 27.78 ac.

LOT 3

U.S. Govt 27.78 ac.

W.H. Hutcheson 1.06 ac.

John F. Kistler
 LOT 5

WARD 20 SPECIAL "B"

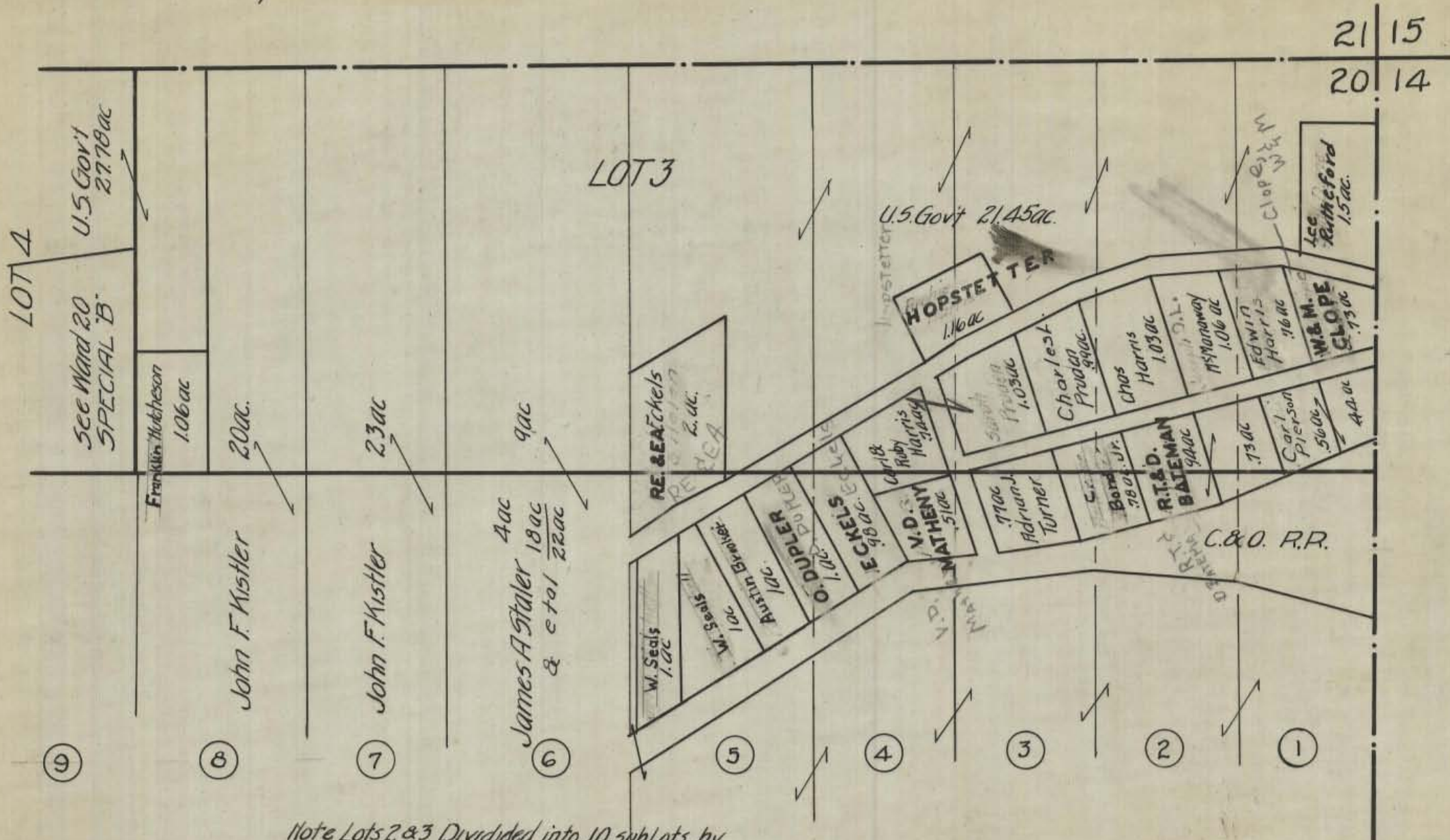
HOCKING COUNTY STATE OHIO

SECTION No. 20 TWP. 13 RANGE 15

SCALE: 300 FEET TO 1 INCH

WARD 20 SPECIAL "C"

Orig. A.W.S Nov 25 1938



Note Lots 2 & 3 Divided into 10 subLots by Judge Court of Common Pleas. Vol. 8 - pg 234-248.

LOT 2

WARD 20 SPECIAL "C"

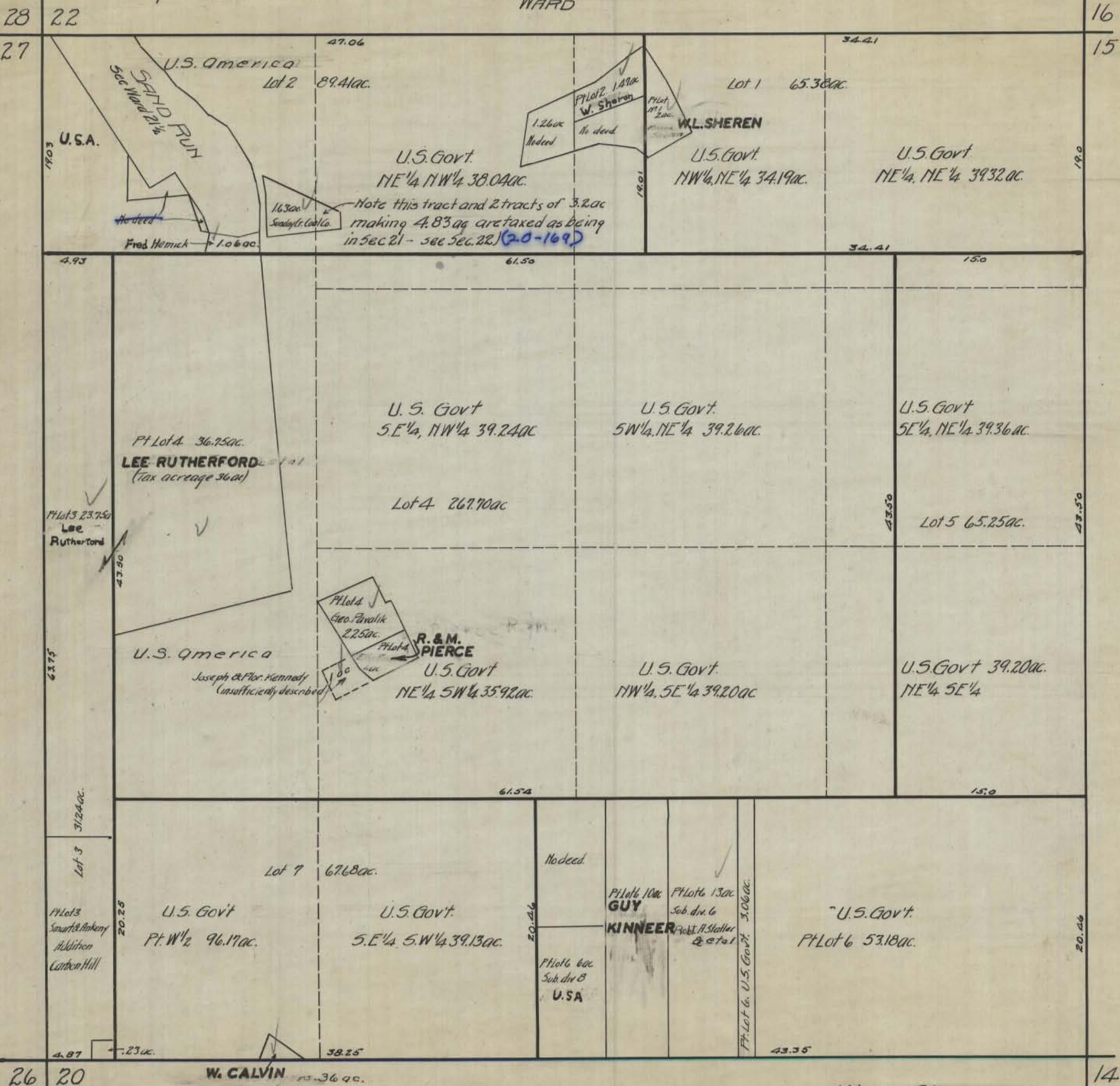
HOCKING COUNTY STATE OHIO

SECTION No. 21 TWP. 13 RANGE 15

SCALE: 500 FEET TO 1 INCH

Original A.W.S. June 3 '38

WARD



28
27
26

22
20

16
15
14

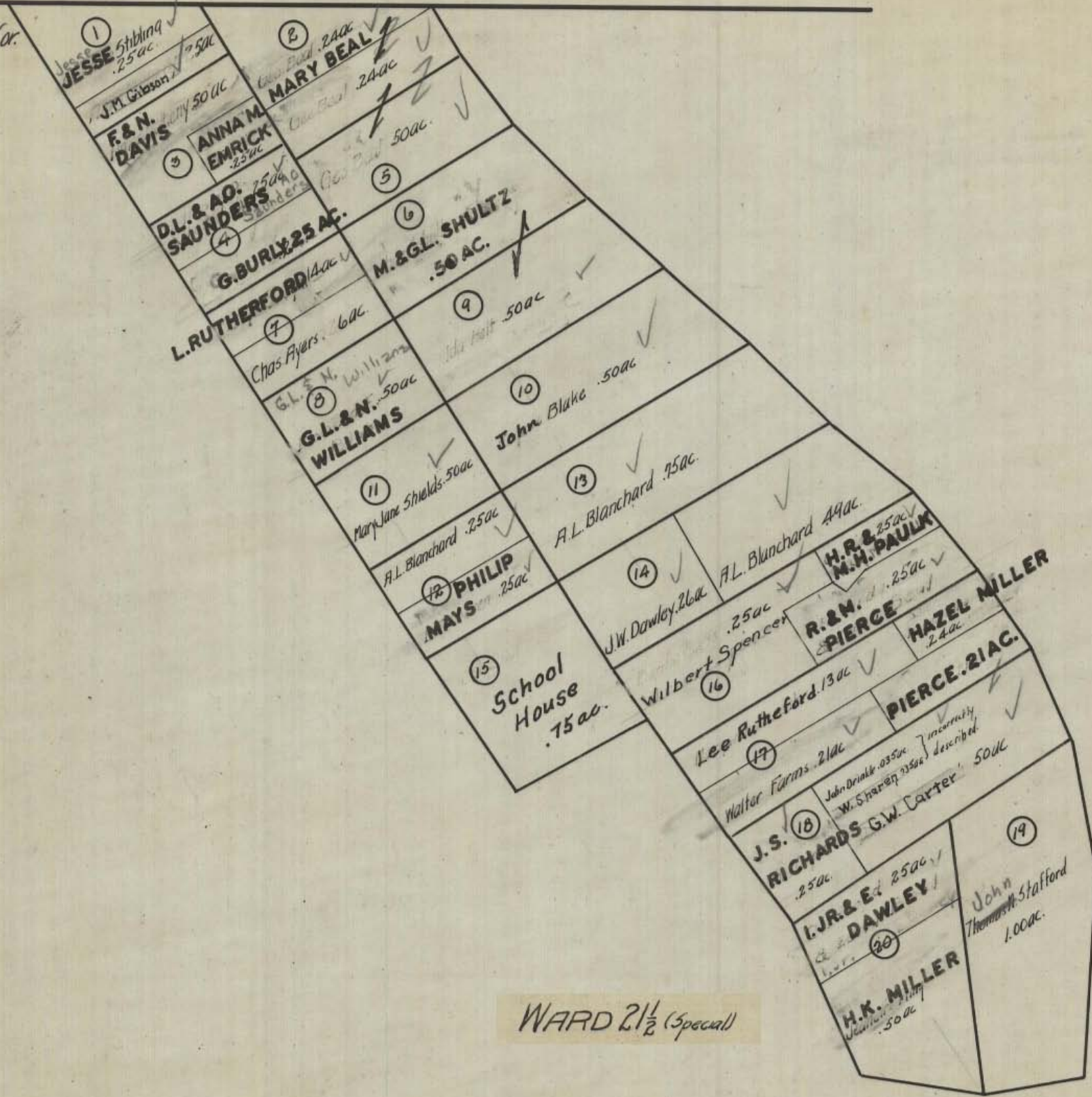
WARD 21
See 21 1/2 special

Original A.W.S. June 2 '38

WARD

28 22 Note - See WARD SPECIAL "A"

27 NW Cor.
21

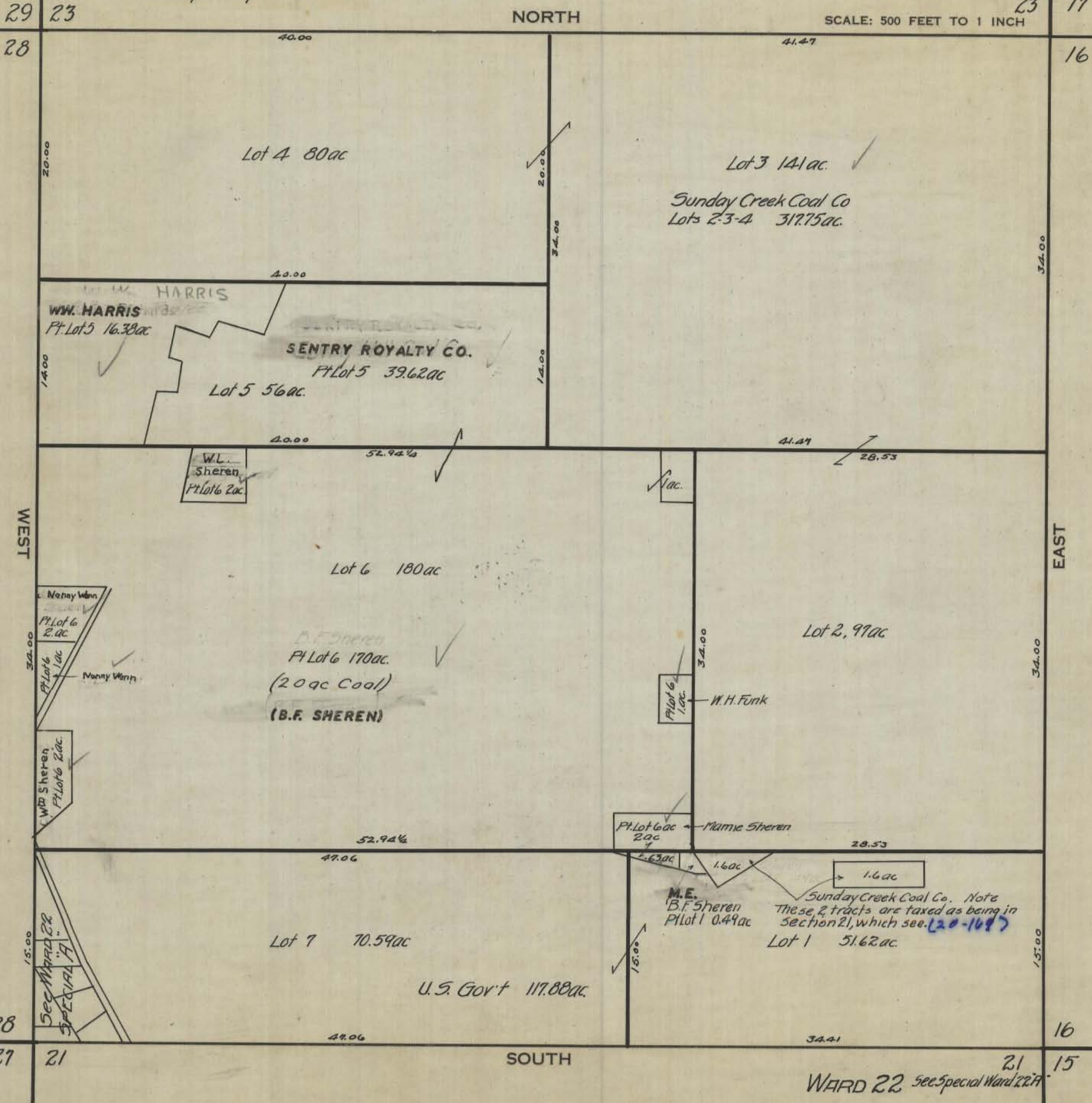


WARD 21 1/2 (Special)

FW. Seabright Orig Nov 30 1938

WARD
NORTH

SCALE: 500 FEET TO 1 INCH



29 23 23 17

28 40.00 41.47 16

20.00 Lot 4 80 ac 20.00 Lot 3 141 ac

34.00 Sunday Creek Coal Co Lots 2-3-4 317.75 ac 34.00

40.00 HARRIS 40.00

14.00 WW. HARRIS Pt. Lot 5 16.38 ac SENTRY ROYALTY CO. Pt. Lot 5 39.62 ac Lot 5 56 ac 14.00

40.00 52.94 1/2 41.47 28.53

WEST W.L. Sheren Pt. Lot 6 2 ac 1 ac. W.H. Funk 34.00 EAST

Lot 6 180 ac Lot 2, 97 ac

34.00 Menny Wann Pt. Lot 6 2 ac Menny Wann Pt. Lot 6 1 ac

34.00 B.F. SHEREN Pt. Lot 6 170 ac (20 ac Coal) (B.F. SHEREN) Pt. Lot 6 1 ac W.H. Funk

52.94 1/2 28.53

34.00 Mammie Sheren Pt. Lot 6 ac 2 ac

52.94 1/2 28.53

47.06 1.6 ac 1.6 ac 1.6 ac

15.00 M.E. B.F. SHEREN Pt. Lot 1 0.49 ac Sunday Creek Coal Co. Note These 2 tracts are taxed as being in Section 21, which see. (20-1687) Lot 1 51.62 ac

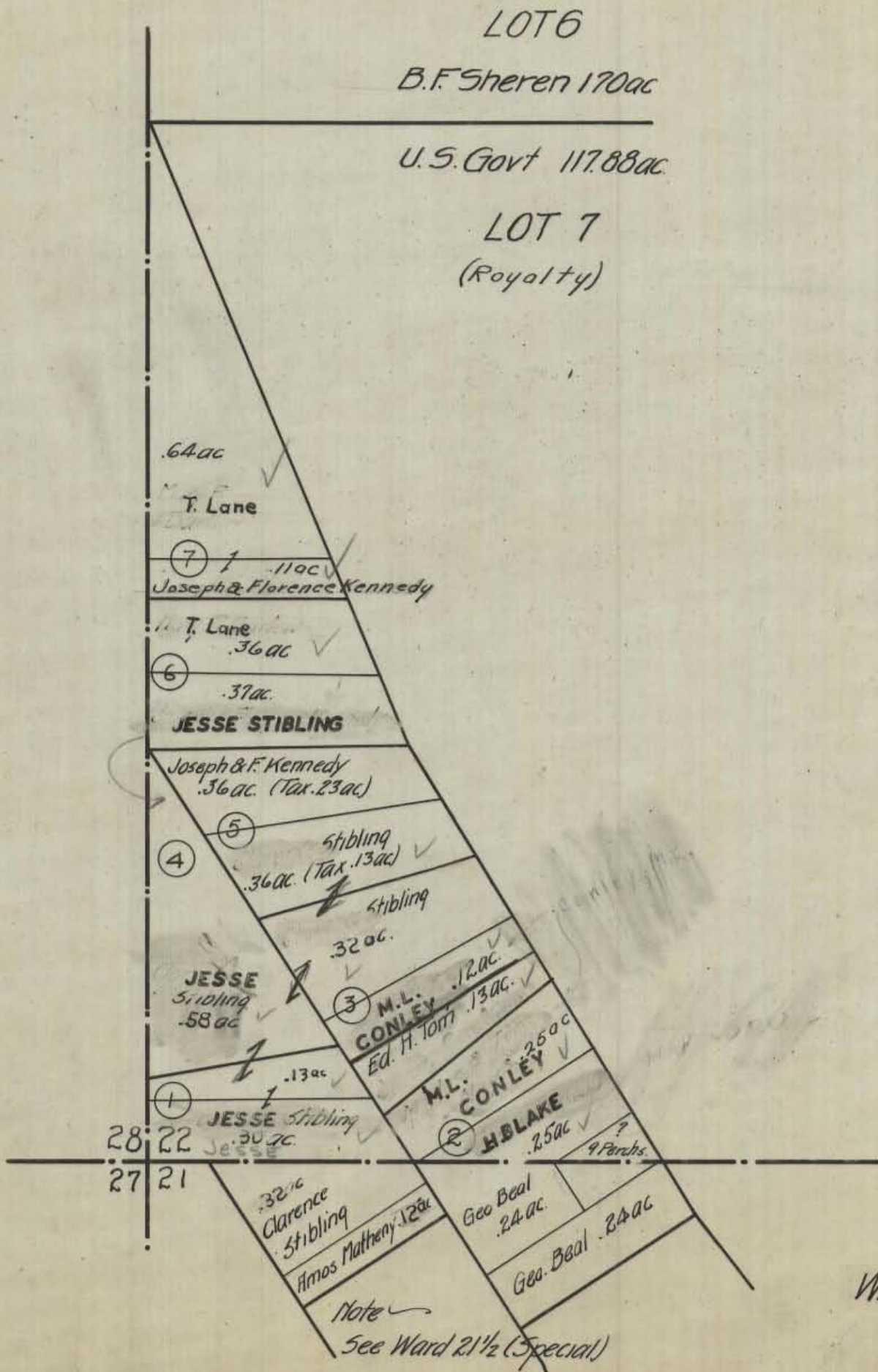
15.00 Lot 7 70.59 ac U.S. Gov't 117.88 ac

47.06 34.41 16

28 27 21 SOUTH 21 15

WARD 22 see Special Ward 22A

A.W. Seabright Orig Nov 30, 1938



WARD 22 SPECIAL "A"

HOCKING COUNTY STATE OHIO

A.W. Seabright Orig Dec 7 1938

SECTION No. 23 TWP. 13 RANGE 15

WARD

NORTH

SCALE: 500 FEET TO 1 INCH

24 18

30 24

29

17

N.W. 1/4 166

Sunday Creek Coal Co.
Tax 528 ac.

Lot 5 40 ac

Lot 6 40 ac

Lot 4 34 ac

Lot 3 53 ac.

H. Chester & Harry E. Lanning

Pt Lot 3 34.69 ac

John Lovett et al
Pt Lot 3 11.19 ac total

H. A. & Sarah Lanning

H. Chester & Harry E. Lanning

RC. & M.G. PERSON

IDA LANNING W. McDONALD

Hubert Edgell Jr. 180 ac

RUTHERFORD
Pt Lot 3 3.54 ac.

N 1/2 S.W. 1/4 83 ac

Lot 2 86 ac

40.67

DELMA Spencer
3 ac (indefinite)

Ward Twp. Trustees
(indefinite)

Frank Martin
3 ac
(indefinite)

Elizabeth Bailey Street
5W 1/4 of 5W 1/4 40 ac

U. S. F.

Elizabeth Bailey Street
36.98 ac.

Lot 1 80 ac.

29

17

28 22

40.73

SOUTH

40.73

WARD 23

RR 16

WEST

EAST

HOCKING COUNTY STATE OHIO
SECTION No. 24 TWP. 13 RANGE 15

A.W.S. Dec 6 1938

WARD

Coal Twp Sec 32 NORTH Coal Twp Sec 33

SCALE: 500 FEET TO 1 INCH

30

40.50

40.50

18

U.S. Gov't 452.75 ac

452.75 ac

40.78

40.78

Ohio Mining Co
42.25 ac.

40.50

EAST

WEST

25.18

Sunday Creek Coal Co.
165 ac.

40.78

40.78

30

40.50

40.50

18

29 23

SOUTH

WARD 24

23 17

Original A.W.S. Dec. 10 1938.

WARD

26 20

32 26

NORTH

SCALE: 500 FEET TO 1 INCH

31

19

Lot 6 62 ac.

Lot 2 84 ac.

Pearl M. Rosser
Pt Lot 1. 29.07 ac.

Don U.S.A. Coal Co
Lots 2 & 6; Pt Lot 3 261.5 ac.

Everett Cheeseman 1 ac.

U.S. Govt Pt Lot 3 17.50 ac.

Lot 3 352 ac.

U.S.A. 33 ac.
Pt Lot 3 39.16 ac.
Donald Blair 2 ac
Victoria & Arthur L. Davis .50 ac
Everett & May Cheeseman 1 ac.

U.S.A.
Pt Lot 3 5 ac
Hazel Warren
Pt Lot 3 12.84 ac.

U.S.A.
Pt Lot 3 34 ac.

J.F. & G. ROGASKI
Pt Lot 5 31.5 ac.

Rogaski, J.F. & G.

U.S. America
Lot 4 103.25 ac.

Chas. Wend
Pt Lot 3 108 ac.
Robert & Lillian Herdlitzka 1 ac.
Edward & Elsie Herdlitzka 1 ac.

U.S.A.
Pt Lot 5 29.50 ac.

John Stuffvebean
Pt Lot 3 6 ac.

31

19

SOUTH

WARD 25

York 30 24
Athens Co. York Twp

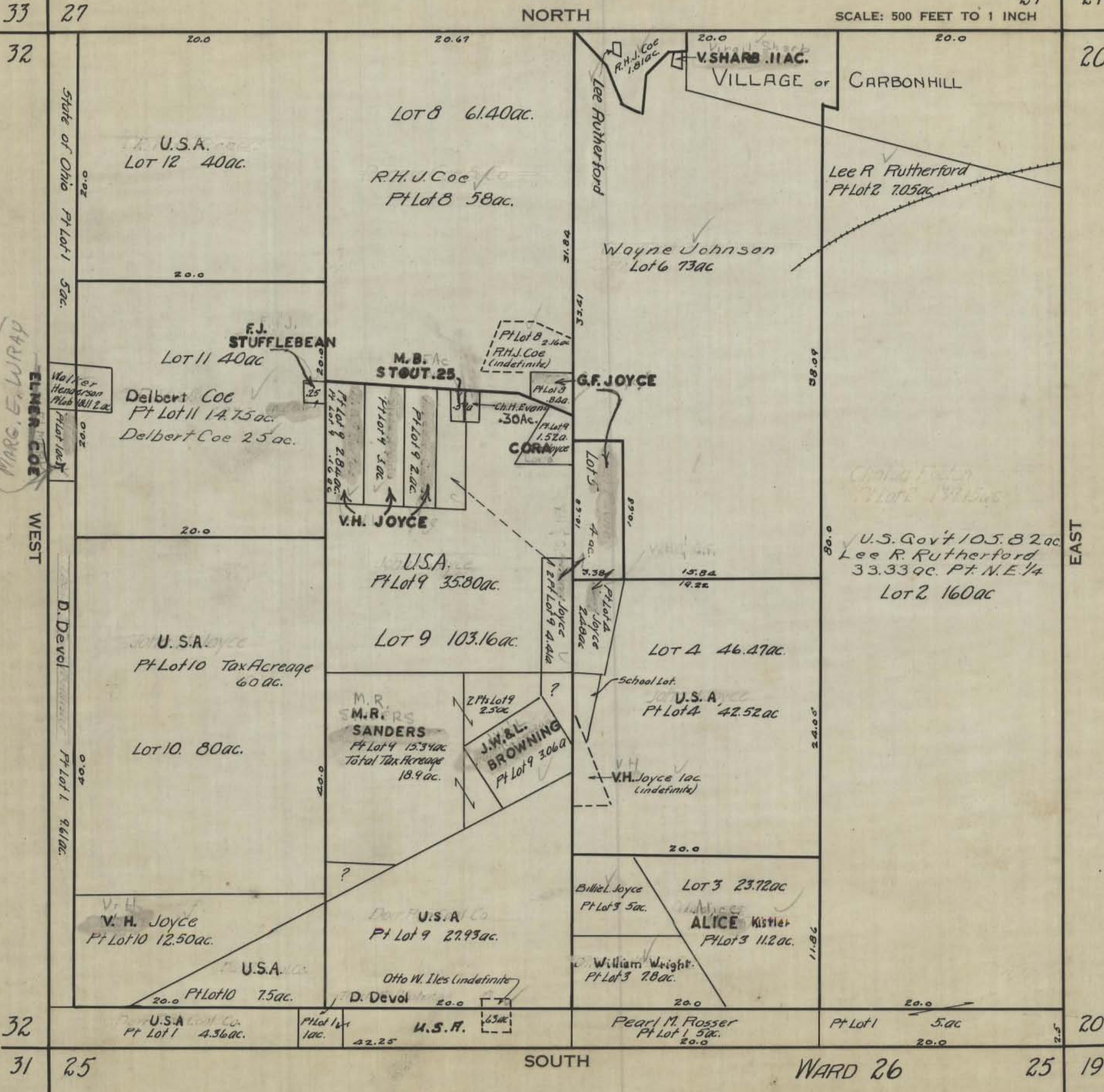
36 30 York Twp
York Twp Athens Co.

Traced Dec. 22 '38 A.W.S.

HOCKING COUNTY STATE OHIO
SECTION No. 26 TWP. 13 RANGE 15

WARD
NORTH

SCALE: 500 FEET TO 1 INCH



33 27

32

32

31 25

27 21

20

EAST

20

25 19

MARG. E. WIRAP

ELMER COE

WEST

State of Ohio Pt Lot 1 5ac.

Walker Henderson Pt Lot 1 2ac.

D. Devoe Pt Lot 1 9.61ac.

U.S.A. Lot 12 40ac.

LOT 8 61.40ac.

R.H.J. Coe Pt Lot 8 58ac.

Lee Rutherford

V. SHARB II AC.

VILLAGE or CARBONHILL

Lee R Rutherford Pt Lot 2 7.05ac.

Wayne Johnson Lot 6 73ac

F.J. STUFFLEBEAN Lot 11 40ac

M.B. Ac STOUT.25

G.F. JOYCE

Delbert COE Pt Lot 11 14.75ac. Delbert Coe 25 ac.

Pt Lot 9 2.84ac. Pt Lot 9 3.0ac. Pt Lot 9 2.0ac.

Ch.H. Evans .30Ac. Pt Lot 9 1.52ac. COR

V.H. JOYCE

U.S.A. Pt Lot 9 35.80ac.

LOT 9 103.16ac.

Lot 5 4ac. Pt Lot 9 4.41ac.

Pt Lot 4 Joyce 2.88ac.

U.S. Gov't 105.82ac. Lee R Rutherford 33.33ac. Pt. N.E. 1/4 Lot 2 160ac

U.S.A. Joyce Pt Lot 10 Tax Acreage 60 ac.

Lot 10. 80ac.

M.R. SANDERS Pt Lot 4 15.34ac. Total Tax Acreage 18.9 ac.

J.W. & L. BROWNING Pt Lot 9 3.06ac

School Lot. U.S.A. Pt Lot 4 42.52 ac

V.H. Joyce 1ac (indefinite)

V.H. Joyce Pt Lot 10 12.50ac.

U.S.A. Co Pt Lot 9 22.93ac.

Billie Joyce Pt Lot 3 5ac.

LOT 3 23.72ac. ALICE Kistler Pt Lot 3 11.2 ac.

William Wright Pt Lot 3 7.8ac.

U.S.A. Co. Pt Lot 1 4.36ac.

Pt Lot 1 10c.

U.S.A. 63ac.

Pearl M. Rosser Pt Lot 1 5ac.

Pt Lot 1 5ac.

SOUTH

WARD 26

HOCKING COUNTY STATE OHIO

SECTION No. 27 TWP. 13 RANGE 15

WARD NORTH

NORTH

SCALE: 500 FEET TO 1 INCH

Original A.W. 5 Jan 3 1939.

34 28

28 22

33

21

Charles Shultz Pt Lot 5 7.76 ac (Note listed for tax Sec 28.

LOT 5 153.62 ac.

U.S. Gov't
Pt Lot 5 113.83 ac.

U.S.A.
Pt Lot 5 40 ac.

F. & L. E. CHAMP Pt Lot 7 17 ac.

LOT 7 81 ac.

E. L. & A. DAWLEY
Pt Lot 7 14 ac.

Edward
Dawley
Pt Lot 7 30 ac.

LOT 4 57.70 ac.
Paul & Helen Shade

RD & H. E.
SHADE
Pt Lot 7 2 ac.

Fred Horn Jr. Pt Lot 13 4.4 ac.

LOT 8 169.54 ac.

Edward Dawley
Total Tax Acreage 731 ac

Lee Rutherford
Tax Acreage 120.75 ac.

Pt Lot 9 4.98 ac.

Lee
Rutherford

Pt Lot 9 16.30 ac.

Phoenix Coal &
Clay Co.

C. HOPRICH 18.86 ac.

D.A. Coe Pt Lots 388-2 ac.

Mary Eliz. Ellison Pt Lot 3 .33 ac.

Lux Pt Lot 3 .91 ac.

SANBORN Pt Lots .98 ac.

S. R. LEHMAN 6 ac.

VILLAGE OF CARBONHILL

Smart & Ankeny
add. to Carbonhill.

Ira Wilkinson Pt Lot 3.

Pearl Lenman .22 Pt Lot 3

Neva Nutter

Ivan & Margaret Lenman Pt Lots

Wm Coe Pt Lot 3 .2 ac

Wm Coe Pt Lot 3 .43 ac

J. & E. M. SQUAD

MARG. E. WRAY

9.09 1/2

33

21

32 26

SOUTH

WARD 27

26 20

HOCKING COUNTY STATE OHIO

Original A.W. Seabright Jan 4 1939

SECTION No. 28 TWP. 13 RANGE 15

WARD

NORTH

SCALE: 500 FEET TO 1 INCH

35 29

29 23

34

22

LOT 3 64ac

LOT 2 497ac

RUTH Martin
Pt Lot 3 31ac

Ruth Martin
Pt Lot 3 31ac

U.S.A.
Pt Lot 2 137ac
(Royalty)

U.S.A. Dumbly
Pt Lot 2 100ac

U.S.A.
Pt Lot 2 101.5ac
(Royalty)

U.S.A.
Pt Lot 2 22ac

U.S.A.
Pt Lot 2 39.5ac

WEST

EAST

Lee Rutherford
Pt Lot 3 2ac

Lee Rutherford
Pt Lot 2 884ac (Royalty)

W.L. Shereff
Pt Lot 2 42.84ac
(Royalty)

Pt Lot 2 40ac
(Royalty)

LILLIE DEER
Pt Lot 2 10ac

LOT 1 123ac

U.S. Gov't
Pt Lot 1 43ac

U.S. Gov't 79ac.
T. Lane 1ac.
Pt Lot 1 72.2ac & Pt Lot 5 Sec. 27 7.76ac. Total 80ac.
note 80ac listed in Sec. 28 for tax.

34

22

33 27

27 21

SOUTH

WARD 28

HOCKING COUNTY STATE OHIO
SECTION No. 29 TWP. 13 RANGE 15

WARD

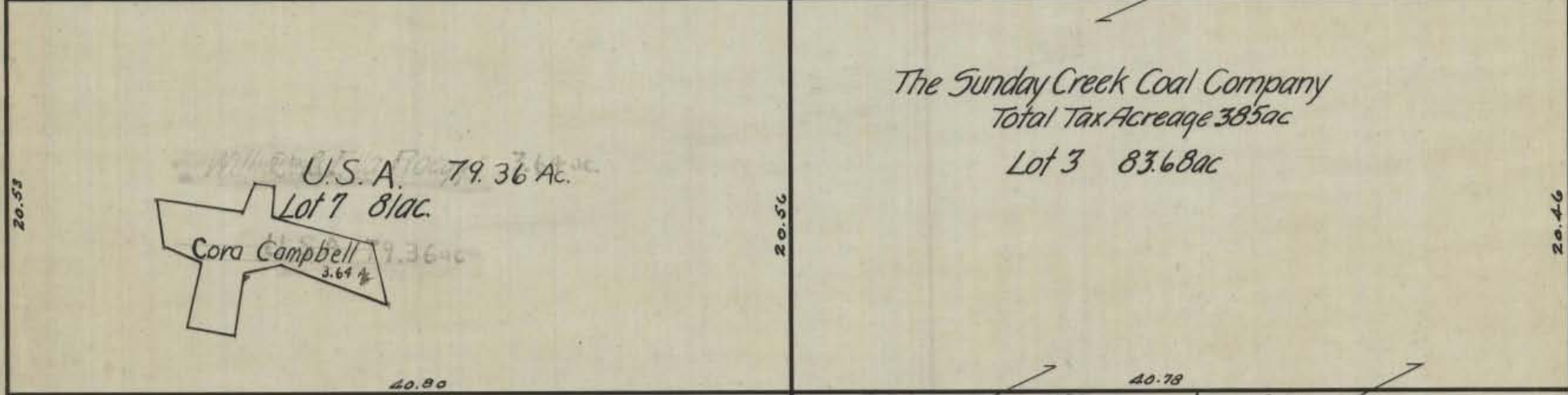
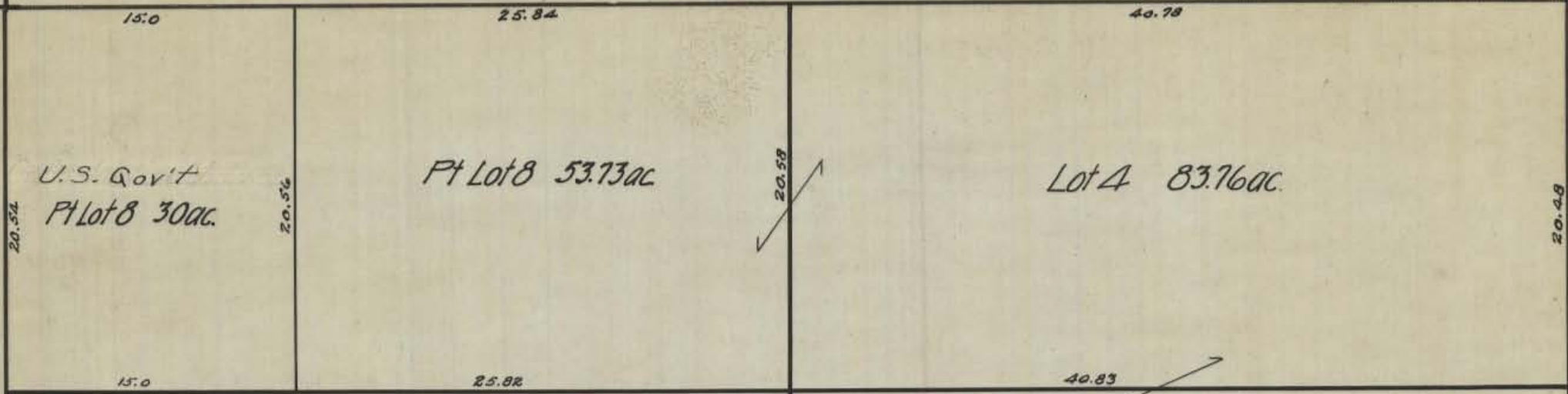
Original AWS. Jan 5 1939

NORTH

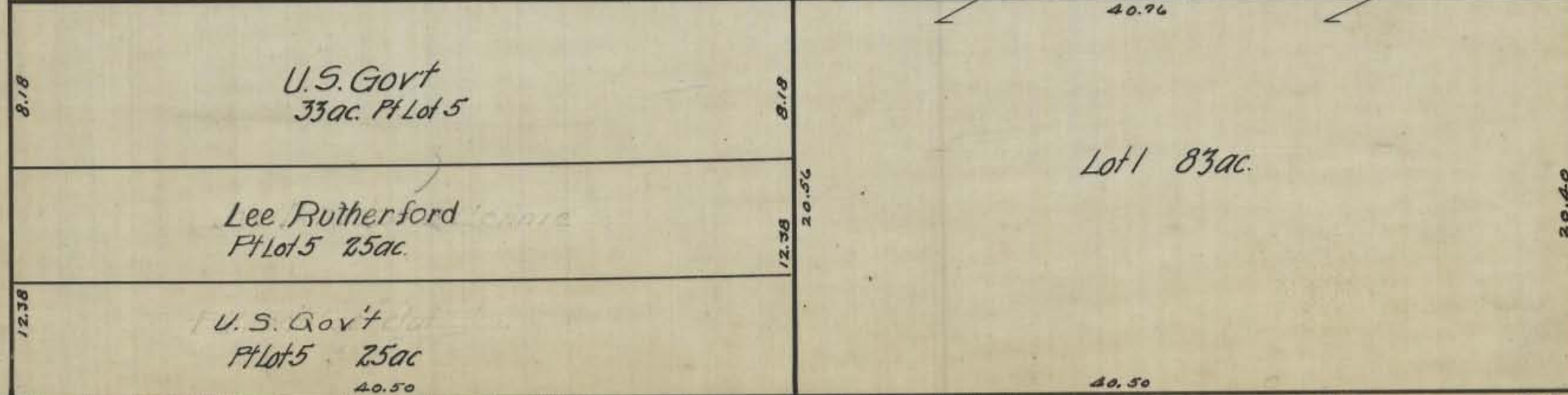
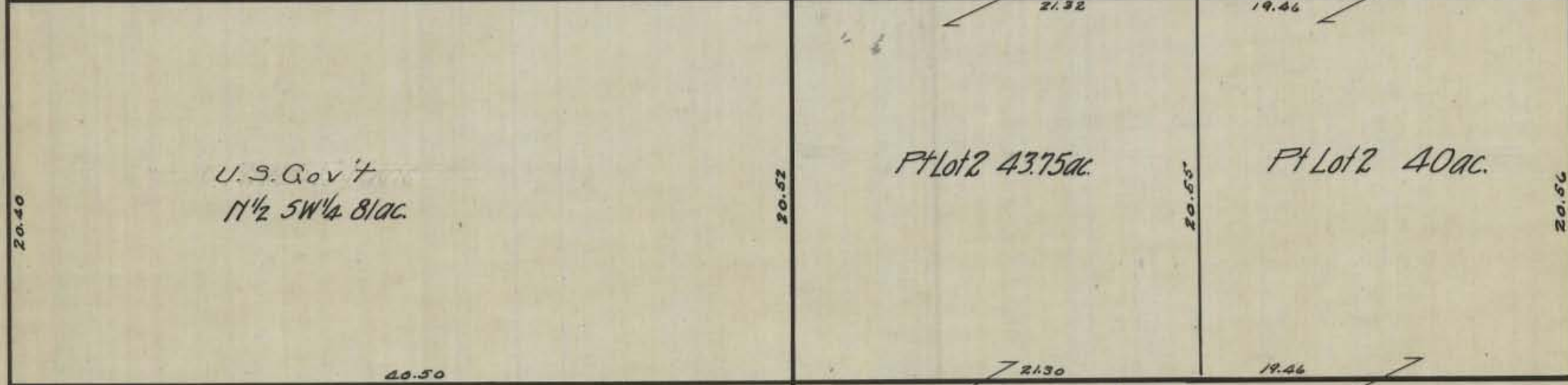
SCALE: 500 FEET TO 1 INCH

36 30 24

35 23



WEST EAST



35 23

34 28 SOUTH WARD 29 20 22

Original A.W. Seabright Jan 5 '39

HOCKING COUNTY STATE OHIO
SECTION No. 30 TWP. 13 RANGE 15

Coal Twp. Sec. 31

WARD
NORTH

Coal Twp Sec 32

SCALE: 500 FEET TO 1 INCH

36

24

U.S. Gov't
N¹/₂ of NW¹/₄ 80ac

NE¹/₄ 165ac.

Lot 3 79¹/₂ac.

Richard H. Cobb
248ac.

Boyle Coal Co.
Pt 5¹/₂ NW¹/₄ 79¹/₂ac.
(Royalty)

John F. Williams
Lot 4 3ac.

U.S.A. et al
Pt N¹/₂ SW¹/₄ & Pt Lot 2, Total 61ac.

C&S. BOND
2.011
1.574

U.S.A.
Lot 2 39.72ac.

Harley Glass & M. Denlon
BOYLE COAL CO.
Pt N¹/₂ SW¹/₄ 61ac.

E¹/₂ of SE¹/₄ 82¹/₂ac.

5¹/₂ of SW¹/₄ 82.5ac

SW¹/₄ of SE¹/₄ 41¹/₄ac

The Sunday Creek Coal Co
Tax Acreage 122ac.

36

24

35

29

SOUTH

WARD 30

29

23

HOCKING COUNTY STATE OHIO

SECTION No. 31 TWP. 13 RANGE 15

Orig. A.W. 5 Dec 24 1938

WARD

NORTH

SCALE: 500 FEET TO 1 INCH

2
Green
Twp

32

32

26

1
Green
Twp.

25

~~Don~~ U.S.A. Coal Co.
Pt N $\frac{1}{2}$ 231.13 ac.

~~John~~ U.S.A. Co.
Pt N $\frac{1}{2}$ 106.37 ac.

WEST

EAST

U.S. Gov't Coal Co.
S $\frac{1}{2}$ 337.50 ac.

1
Green Twp

25

Starr Twp York Twp Athens Co
6 36

SOUTH

WARD 31

York Twp
36
Athens Co.

HOCKING COUNTY STATE OHIO

SECTION No. 32 TWP. 13 RANGE 15

Orig. A.W.S Jan 5 1939

WARD

NORTH

SCALE: 500 FEET TO 1 INCH

Green Twp 3 33

Green Twp 2

33 27

26

WEST

EAST

NW 1/4 171.35 ac.

N 1/2 & SW 1/4 of NE 1/4 128 ac.

W. A. Work & Lewis H Wolfe
N 1/2 309 ac

Lot 1 9.64 ac.

Lot 2 32.00 ac.

N 1/2 of SW 1/4 85 ac.

NE 1/4 of SE 1/4 42 ac.

U.S. Gov't
S 1/2 372 ac.

S 1/2 of SW 1/4 85 ac.

NW 1/4 of SE 1/4 & S 1/2 of SE 1/4 128 ac.

Green Twp 2

Green Twp 1. 31

SOUTH

WARD 32

26

31 25

WARD

NORTH

SCALE: 500 FEET TO 1 INCH

Green
Twp
4

34

Orig A.W.S. Jan. 6 1939

34 28

Green
Twp
3

Lot 2
1.02 ac
C.S.V. HARTMAN
Tax Dup. 1 ac

27

LOT 1 150 ac.

U.S.A. Lehman

Pt. Lot 1 100 ac.

LOT 3 72.80 ac.

IRMA POWELL

IRMA POWELL 29.51 ac.

Tax Dupl. 73 ac.

U.S. Gov't 43.49 ac.

41.74

D.&H.M. HILES 43 AC.

23.96

35.58

LOT 4 123.84 ac.

Grace Rutherford
Pt Lot 1 49.569
49.569

S.I. Stacey et al.
Lot 4 Tax dupl. 110 ac.

WEST

EAST

20.87

83.30

59.34

20.87

Lee Rutherford
1 1/2 of 5 1/2 170 ac.

83.30

20.87

U.S.A. WIFE
5 1/2 of 5 1/2 173 ac.

20.87

Green
Twp
3

27

2
Green
Twp

32

83.30

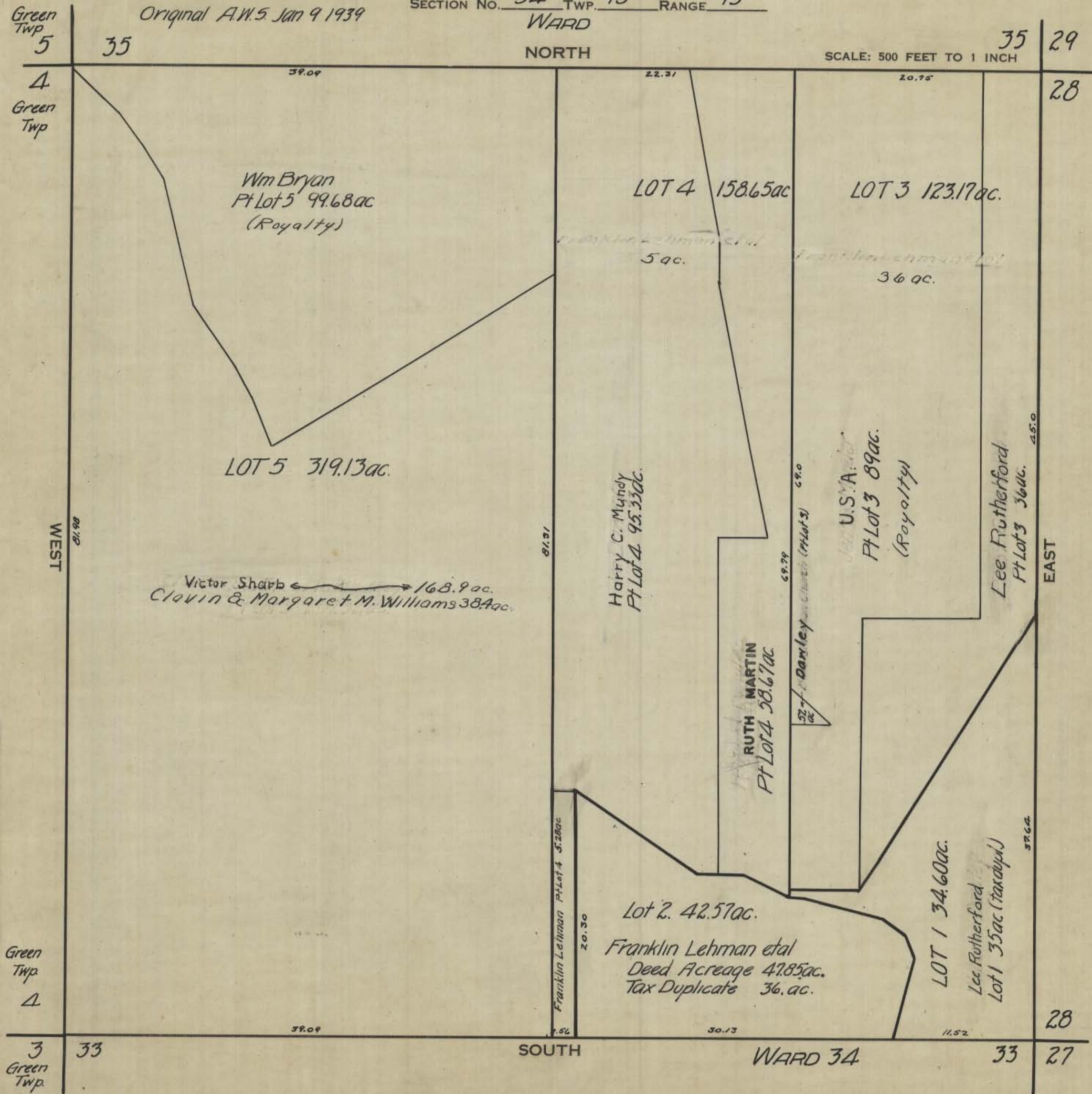
SOUTH

WARD 33

32 26

Original A.W.S. Jan 9 1939

SCALE: 500 FEET TO 1 INCH



HOCKING COUNTY STATE OHIO

SECTION No. 35 TWP. 13 RANGE 15

WARD

Original A.W. 5 Jan 14 1939

36 30

NORTH

SCALE: 500 FEET TO 1 INCH

Green Twp 6

36

83.45

LOT 1 111.24 ac.

29

U.S. Gov't
Lots 1 & 2 261.44 ac.

83.45

LOT 2 151 ac

13.33

13.33

57.32

LOT 7 201.83 ac.

45.98

LOT 3 109.28 ac.

Pt Lot 3
4.93 ac.
Greendale Brick Co.
(Not on tax
dept)

U.S. Gov't
Pt Lot 3 103.68 ac.

U.S. Gov't
Pt Lot 7 200.69 ac.
Two Parcels 97.5 ac & 102 ac.

Dawley
Cemetery
2.5 ac.
Pt Lot 7.

WEST

EAST

8.8

8.7

24.94

54.14

14.20

Lot 4 3.71 ac

Greendale Brick Co.

Pt Lot 3
2 ac

Greendale Brick Co.

43.94
42.29

Pt Lot 6
2 ac

ETHEL & THURMAN KLINE
LOT 6 92.67 ac.

Greendale Brick Co.

6.81

1.55 ac

Lot 5 2.49 ac

H. & A.
STEELE
3 ac

S.S. & L. MUNDY
Pt Lot 6 77.67 ac.

20.50

Green Twp 5

14.13

John Williams
Pt Lot 6 10.07 ac.

45.91

37.24

SOUTH

WARD 35

29

Green Twp 4

34

34

28

HOCKING COUNTY STATE OHIO

Original A.W. Seabright Jan 15 1939

SECTION No. 36 TWP. 13 RANGE 15

WARD

FALLS GORE 36

NORTH COAL 31

SCALE: 500 FEET TO 1 INCH

