

HOCKING COUNTY

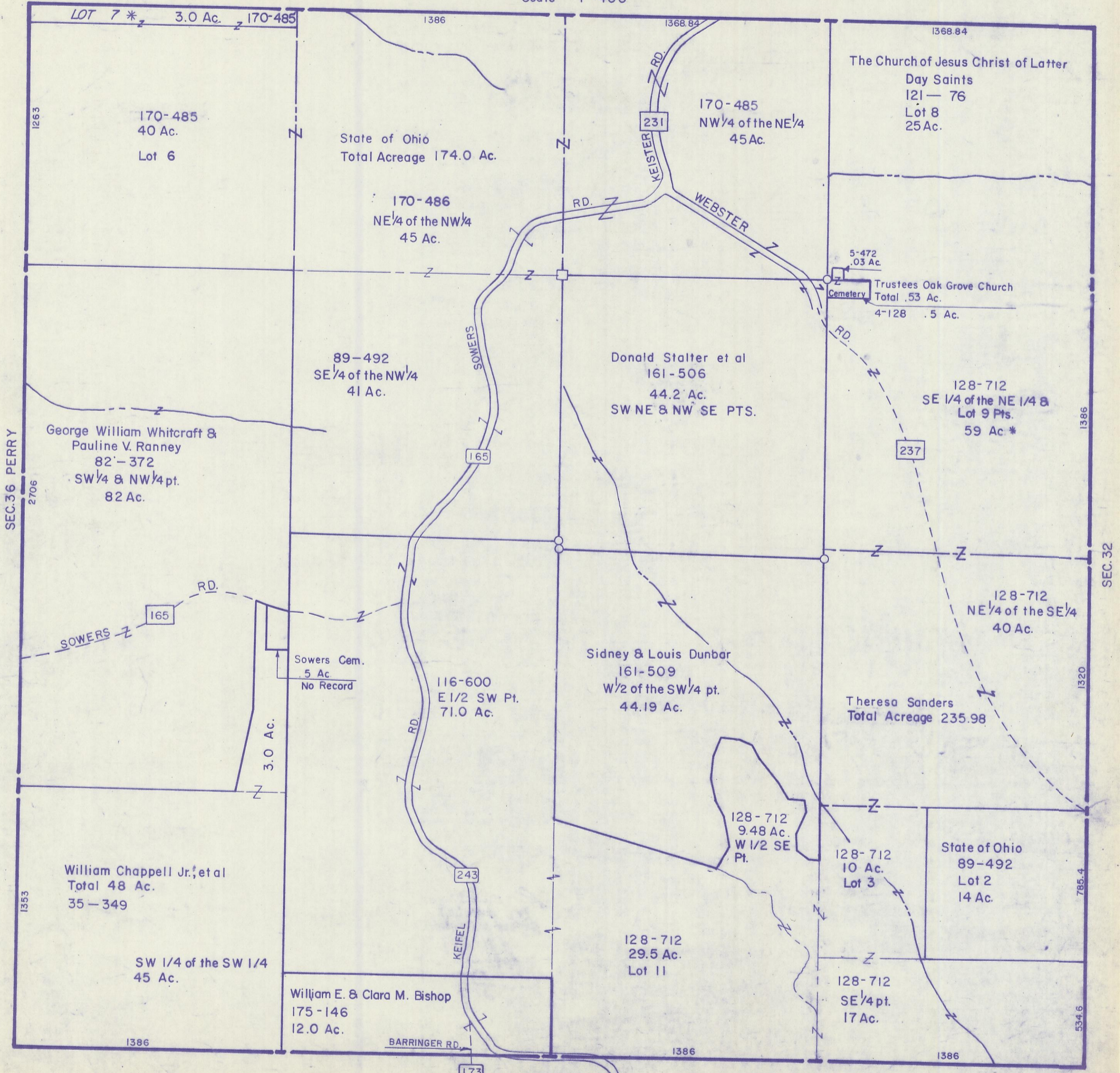
Sec. 31 T12 R18

LAUREL TWP

Scale 1"=400'

SEC. 30

SEC. 30



LOT 7 * 3.0 Ac. 170-485

170-485
40 Ac.
Lot 6

State of Ohio
Total Acreage 174.0 Ac.

170-486
NE 1/4 of the NW 1/4
45 Ac.

170-485
NW 1/4 of the NE 1/4
45 Ac.

The Church of Jesus Christ of Latter
Day Saints
121-76
Lot 8
25 Ac.

89-492
SE 1/4 of the NW 1/4
41 Ac.

Donald Stalter et al
161-506
44.2 Ac.
SW NE & NW SE PTS.

5-472
.03 Ac.
Trustees Oak Grove Church
Total .53 Ac.
4-128 .5 Ac.

George William Whitcraft &
Pauline V. Ranney
82-372
SW 1/4 & NW 1/4 pt.
82 Ac.

128-712
SE 1/4 of the NE 1/4 &
Lot 9 Pts.
59 Ac *

128-712
NE 1/4 of the SE 1/4
40 Ac.

Sidney & Louis Dunbar
161-509
W 1/2 of the SW 1/4 pt.
44.19 Ac.

Theresa Sanders
Total Acreage 235.98

Sowers Cem.
.5 Ac.
No Record

116-600
E 1/2 SW Pt.
71.0 Ac.

128-712
9.48 Ac.
W 1/2 SE
Pt.

128-712
10 Ac.
Lot 3

State of Ohio
89-492
Lot 2
14 Ac.

William Chappell Jr., et al
Total 48 Ac.
35-349

SW 1/4 of the SW 1/4
45 Ac.

William E. & Clara M. Bishop
175-146
12.0 Ac.

128-712
29.5 Ac.
Lot 11

128-712
SE 1/4 pt.
17 Ac.

SEC. 31