

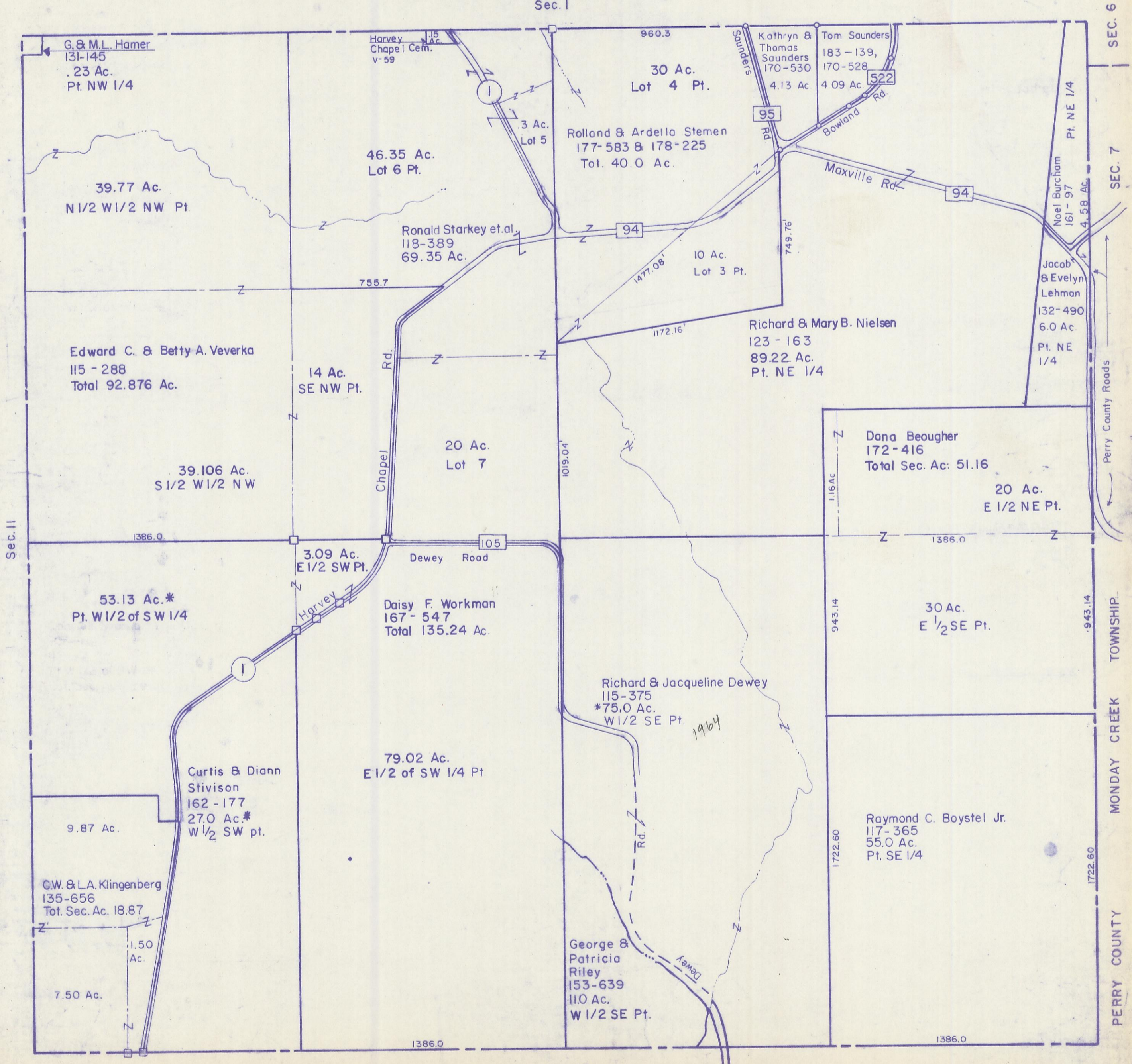
HOCKING COUNTY

Sec. 12. T 15 R 17

MARION TWP.

Scale 1"=400'

Sec. 1



G. & M.L. Hamer
131-145
.23 Ac.
Pt. NW 1/4

Harvey
Chapel Cem.
v-59

30 Ac.
Lot 4 Pt.

Kathryn &
Thomas
Saunders
170-530
4.13 Ac.

Tom Saunders
183-139,
170-528
4.09 Ac.

39.77 Ac.
N 1/2 W 1/2 NW Pt

46.35 Ac.
Lot 6 Pt.

Rolland & Ardella Stemen
177-583 & 178-225
Tot. 40.0 Ac.

Ronald Starkey et.al.
118-389
69.35 Ac.

10 Ac.
Lot 3 Pt.

Edward C. & Betty A. Veverka
115-288
Total 92.876 Ac.

14 Ac.
SE NW Pt.

Richard & Mary B. Nielsen
123-163
89.22 Ac.
Pt. NE 1/4

Jacob
& Evelyn
Lehman
132-490
6.0 Ac.
Pt. NE
1/4

39.106 Ac.
S 1/2 W 1/2 NW

20 Ac.
Lot 7

Dana Beougher
172-416
Total Sec. Ac: 51.16

20 Ac.
E 1/2 NE Pt.

53.13 Ac.*
Pt. W 1/2 of SW 1/4

3.09 Ac.
E 1/2 SW Pt.

Daisy F. Workman
167-547
Total 135.24 Ac.

Richard & Jacqueline Dewey
115-375
*75.0 Ac.
W 1/2 SE Pt.
1964

30 Ac.
E 1/2 SE Pt.

Curtis & Diann
Stivison
162-177
27.0 Ac.*
W 1/2 SW pt.

79.02 Ac.
E 1/2 of SW 1/4 Pt

Raymond C. Boystel Jr.
117-365
55.0 Ac.
Pt. SE 1/4

C.W. & L.A. Klingenberg
135-656
Tot. Sec. Ac. 18.87

1.50
Ac.

7.50 Ac.

George &
Patricia
Riley
153-639
11.0 Ac.
W 1/2 SE Pt.

Sec. 13

Sec. 12

SEC. 6
SEC. 7
TOWNSHIP
MONDAY CREEK
PERRY COUNTY