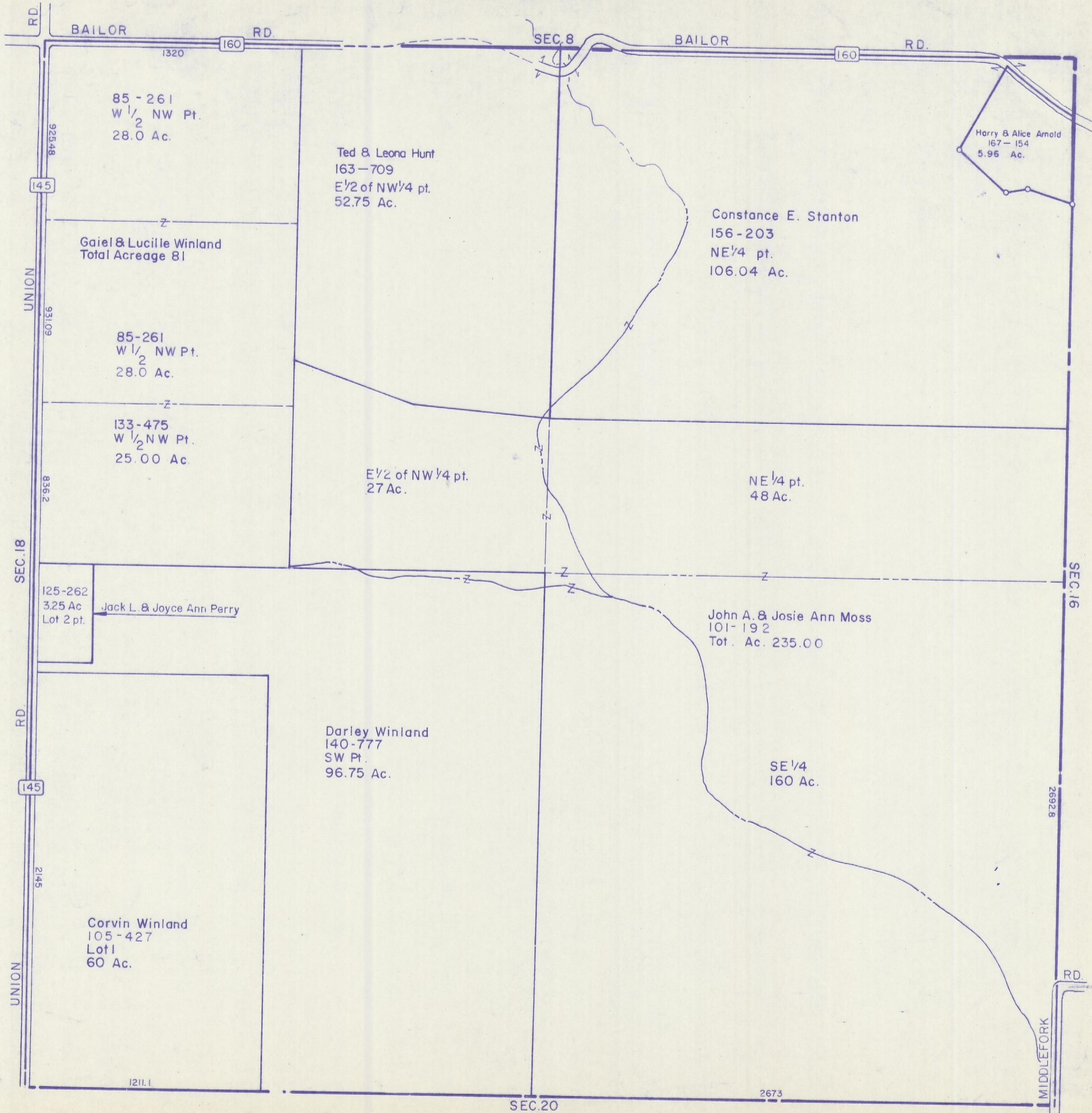


HOCKING COUNTY

Sec. 17 T12 R19

PERRY TWP.

Scale: 1" = 400'



85 - 261
W 1/2 NW Pt.
28.0 Ac.

Ted & Leona Hunt
163-709
E 1/2 of NW 1/4 pt.
52.75 Ac.

Harry & Alice Arnold
167-154
5.96 Ac.

Constance E. Stanton
156-203
NE 1/4 pt.
106.04 Ac.

Gaiel & Lucille Winland
Total Acreage 81

85-261
W 1/2 NW Pt.
28.0 Ac.

133-475
W 1/2 NW Pt.
25.00 Ac.

E 1/2 of NW 1/4 pt.
27 Ac.

NE 1/4 pt.
48 Ac.

125-262
3.25 Ac
Lot 2 pt.
Jack L. & Joyce Ann Perry

John A. & Josie Ann Moss
101-192
Tot. Ac. 235.00

Darley Winland
140-777
SW Pt.
96.75 Ac.

SE 1/4
160 Ac.

Corvin Winland
105-427
Lot 1
60 Ac.

SEC. 17

7