

HOCKING COUNTY

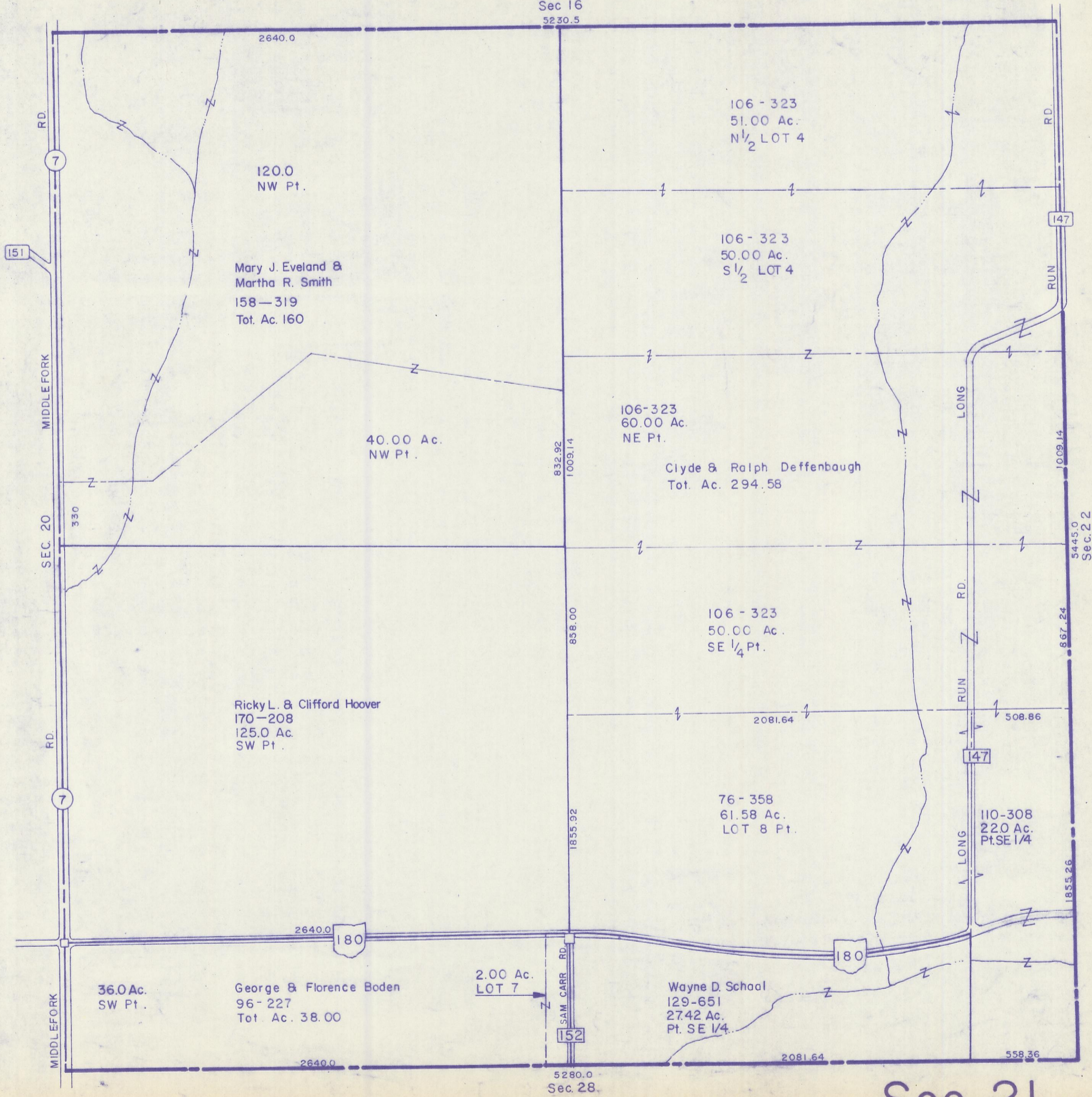
Sec 21 T12 R19

PERRY TWP

Scale = 1" = 400'

Sec 16

5230.5



2640.0

106 - 323
51.00 Ac.
N 1/2 LOT 4

120.0
NW Pt.

Mary J. Eveland &
Martha R. Smith
158-319
Tot. Ac. 160

106 - 323
50.00 Ac.
S 1/2 LOT 4

40.00 Ac.
NW Pt.

106-323
60.00 Ac.
NE Pt.

Clyde & Ralph Deffenbaugh
Tot. Ac. 294.58

106 - 323
50.00 Ac.
SE 1/4 Pt.

Ricky L. & Clifford Hoover
170-208
125.0 Ac.
SW Pt.

76 - 358
61.58 Ac.
LOT 8 Pt.

110-308
22.0 Ac.
Pt. SE 1/4

36.0 Ac.
SW Pt.

George & Florence Boden
96-227
Tot. Ac. 38.00

2.00 Ac.
LOT 7

Wayne D. Schaal
129-651
27.42 Ac.
Pt. SE 1/4

Sec. 21