

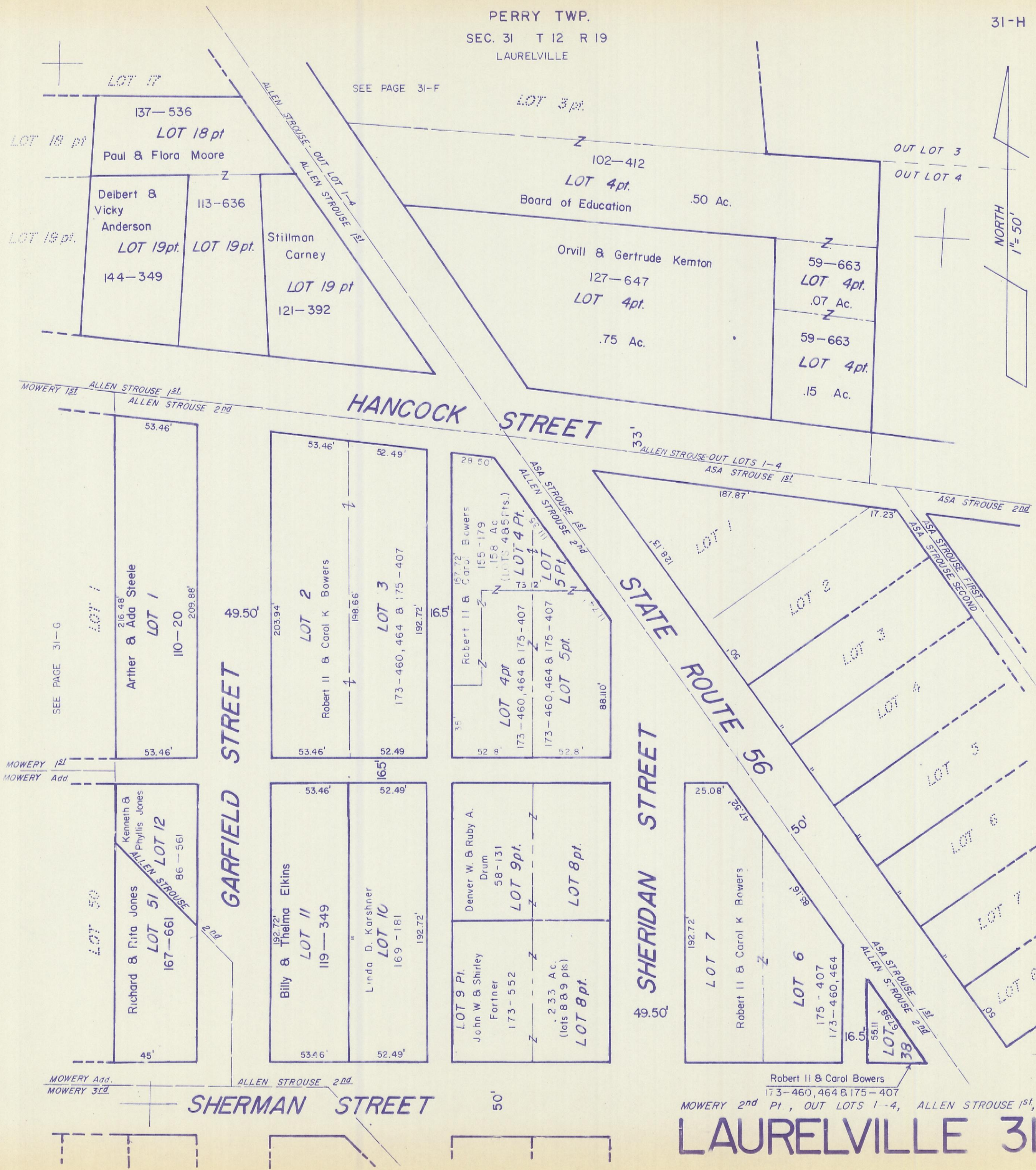
HOCKING COUNTY

PERRY TWP.

SEC. 31 T 12 R 19

LAURELVILLE

31-H



SEE PAGE 31-F

SEE PAGE 31-G

SEE PAGE 31-I

MOWERY 1st
MOWERY Add.

ALLEN STROUSE 2nd

Robert II & Carol Bowers
173-460, 464 & 175-407
MOWERY 2nd Pt, OUT LOTS 1-4, ALLEN STROUSE 1st, & 2nd

SHERMAN STREET

LAURELVILLE 31-H

SEE PAGE 31-K