

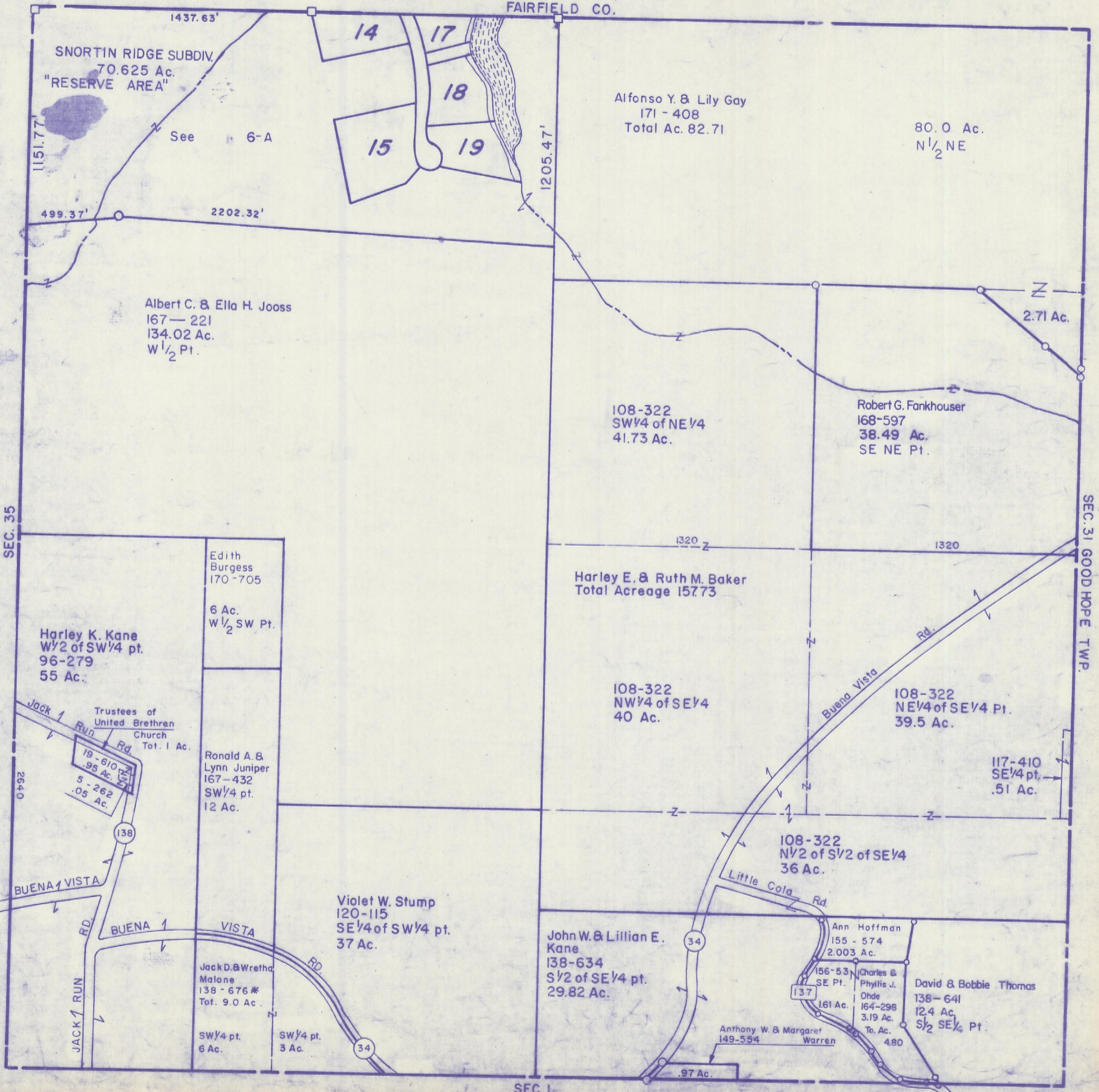
HOCKING COUNTY

Sec. 36 T13 R19

PERRY TWP.

Scale: 1"=400'

FAIRFIELD CO.



SNORTIN RIDGE SUBDIV.
70.625 Ac.
"RESERVE AREA"

See 6-A

Alfonso Y. & Lily Gay
171 - 408
Total Ac. 82.71

80.0 Ac.
N¹/₂ NE

Albert C. & Ella H. Jooss
167 - 221
134.02 Ac.
W¹/₂ Pt.

108-322
SW¹/₄ of NE¹/₄
41.73 Ac.

Robert G. Fankhouser
168-597
38.49 Ac.
SE NE Pt.

Harley K. Kane
W¹/₂ of SW¹/₄ pt.
96-279
55 Ac.

Edith Burgess
170-705
6 Ac.
W¹/₂ SW Pt.

Harley E. & Ruth M. Baker
Total Acreage 157.73

108-322
NW¹/₄ of SE¹/₄
40 Ac.

108-322
NE¹/₄ of SE¹/₄ Pt.
39.5 Ac.

Trustees of
United Brethren
Church
Tot. 1 Ac.
19-610
.95 Ac.
5-262
.05 Ac.

Ronald A. &
Lynn Juniper
167-432
SW¹/₄ pt.
12 Ac.

117-410
SE¹/₄ pt.
.51 Ac.

Violet W. Stump
120-115
SE¹/₄ of SW¹/₄ pt.
37 Ac.

108-322
N¹/₂ of S¹/₂ of SE¹/₄
36 Ac.

John W. & Lillian E.
Kane
138-634
S¹/₂ of SE¹/₄ pt.
29.82 Ac.

Ann Hoffman
155 - 574
2.003 Ac.

Jack D. & Wretha
Malone
138 - 676 *
Tot. 9.0 Ac.

156-53
SE Pt.
161 Ac.
Charles &
Phyllis J.
Ohde
164-298
3.19 Ac.
To. Ac. 4.80

David & Bobbie Thomas
138-641
12.4 Ac.
S¹/₂ SE¹/₄ Pt.

Anthony W. & Margaret
Warren
149-554

.97 Ac.

SEC. 36 (TOP TIER)