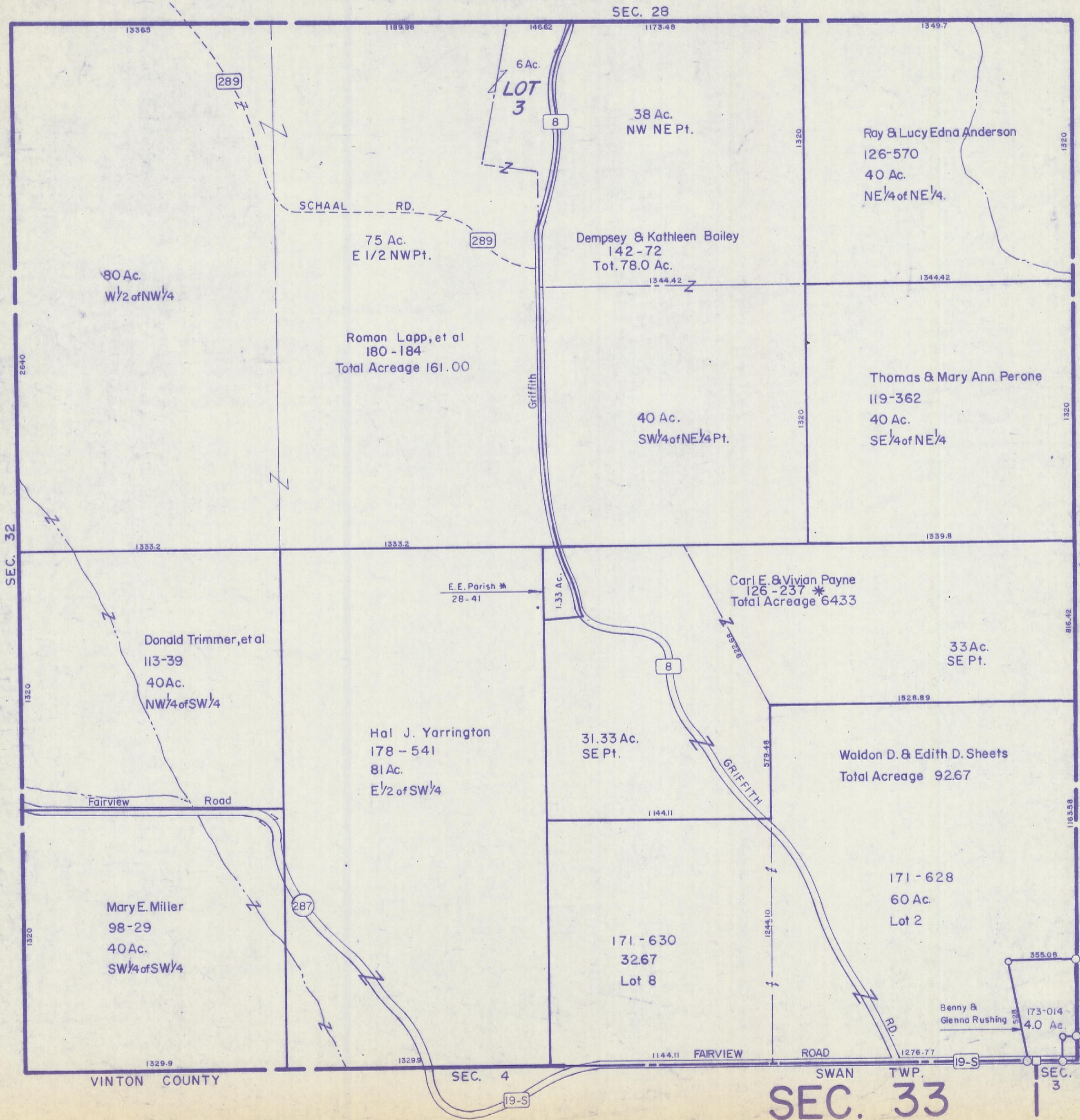


HOCKING COUNTY

Sec. 33 T 13 R 17

WASHINGTON TWP.

Scale 1"=400'



80 Ac.
W 1/2 of NW 1/4

6 Ac.
LOT 3

38 Ac.
NW NE Pt.

Ray & Lucy Edna Anderson
126-570
40 Ac.
NE 1/4 of NE 1/4.

75 Ac.
E 1/2 NW Pt.

Dempsey & Kathleen Bailey
142-72
Tot. 78.0 Ac.

Roman Lapp, et al
180-184
Total Acreage 161.00

40 Ac.
SW 1/4 of NE 1/4 Pt.

Thomas & Mary Ann Perone
119-362
40 Ac.
SE 1/4 of NE 1/4

Donald Trimmer, et al
113-39
40 Ac.
NW 1/4 of SW 1/4

E. E. Parish *
28-41

Carl E. & Vivian Payne
126-237 *
Total Acreage 64.33

33 Ac.
SE Pt.

Hal J. Yarrington
178-541
81 Ac.
E 1/2 of SW 1/4

31.33 Ac.
SE Pt.

Waldon D. & Edith D. Sheets
Total Acreage 92.67

Mary E. Miller
98-29
40 Ac.
SW 1/4 of SW 1/4

171-628
60 Ac.
Lot 2

171-630
32.67
Lot 8

Benny & Glenna Rushing
173-014
4.0 Ac.

Daniel Camp *
48-263, 25 Ac.

VINTON COUNTY

SEC. 4

SWAN TWP.

SEC. 33

SEC. 3