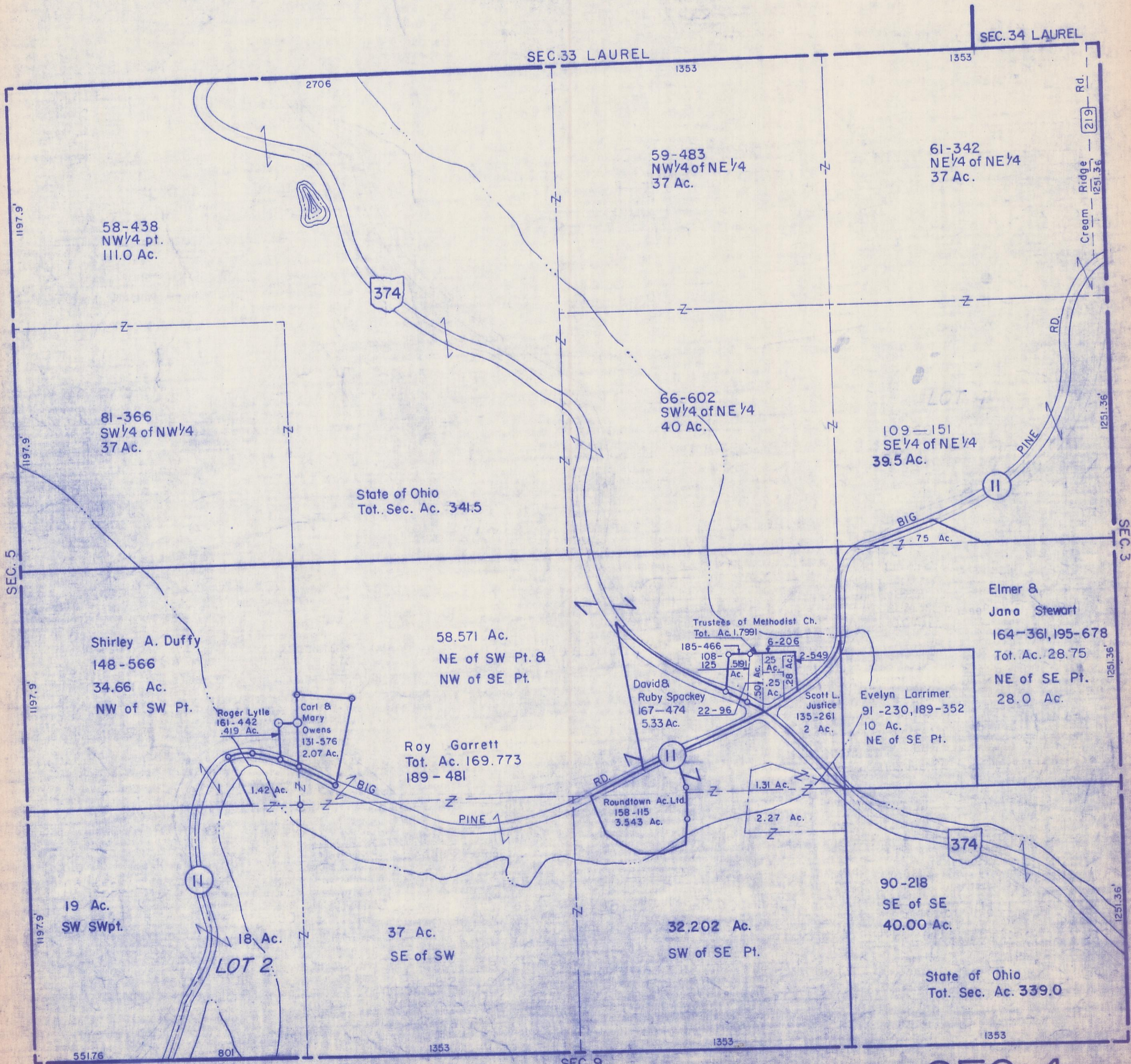


HOCKING COUNTY

Sec. 4 T11 R18

BENTON TWP.

Scale: 1"=400'



58-438
NW 1/4 pt.
111.0 Ac.

81-366
SW 1/4 of NW 1/4
37 Ac.

Shirley A. Duffy
148-566
34.66 Ac.
NW of SW Pt.

19 Ac.
SW SWpt.

Roger Lytle
161-442
.419 Ac.

Carl &
Mary
Owens
131-576
2.07 Ac.

Roy Garrett
Tot. Ac. 169.773
189-481

37 Ac.
SE of SW

State of Ohio
Tot. Sec. Ac. 341.5

58.571 Ac.
NE of SW Pt. &
NW of SE Pt.

59-483
NW 1/4 of NE 1/4
37 Ac.

66-602
SW 1/4 of NE 1/4
40 Ac.

David &
Ruby Spackey
167-474 22-96
5.33 Ac.

Roundtown Ac. Ltd.
158-115
3.543 Ac.

Trustees of Methodist Ch.
Tot. Ac. 1.7991

185-466
108-
125

591
Ac.

25
Ac.

90
Ac.

25
Ac.

28
Ac.

2-549

Scott L.
Justice
135-261
2 Ac.

Evelyn Larrimer
91-230, 189-352
10 Ac.
NE of SE Pt.

90-218
SE of SE
40.00 Ac.

State of Ohio
Tot. Sec. Ac. 339.0

61-342
NE 1/4 of NE 1/4
37 Ac.

109-151
SE 1/4 of NE 1/4
39.5 Ac.

Elmer &
Jana Stewart
164-361, 195-678
Tot. Ac. 28.75
NE of SE Pt.
28.0 Ac.

SEC. 34 LAUREL

SEC. 33 LAUREL

SEC. 5

SEC. 3

SEC. 9

SEC. 4