

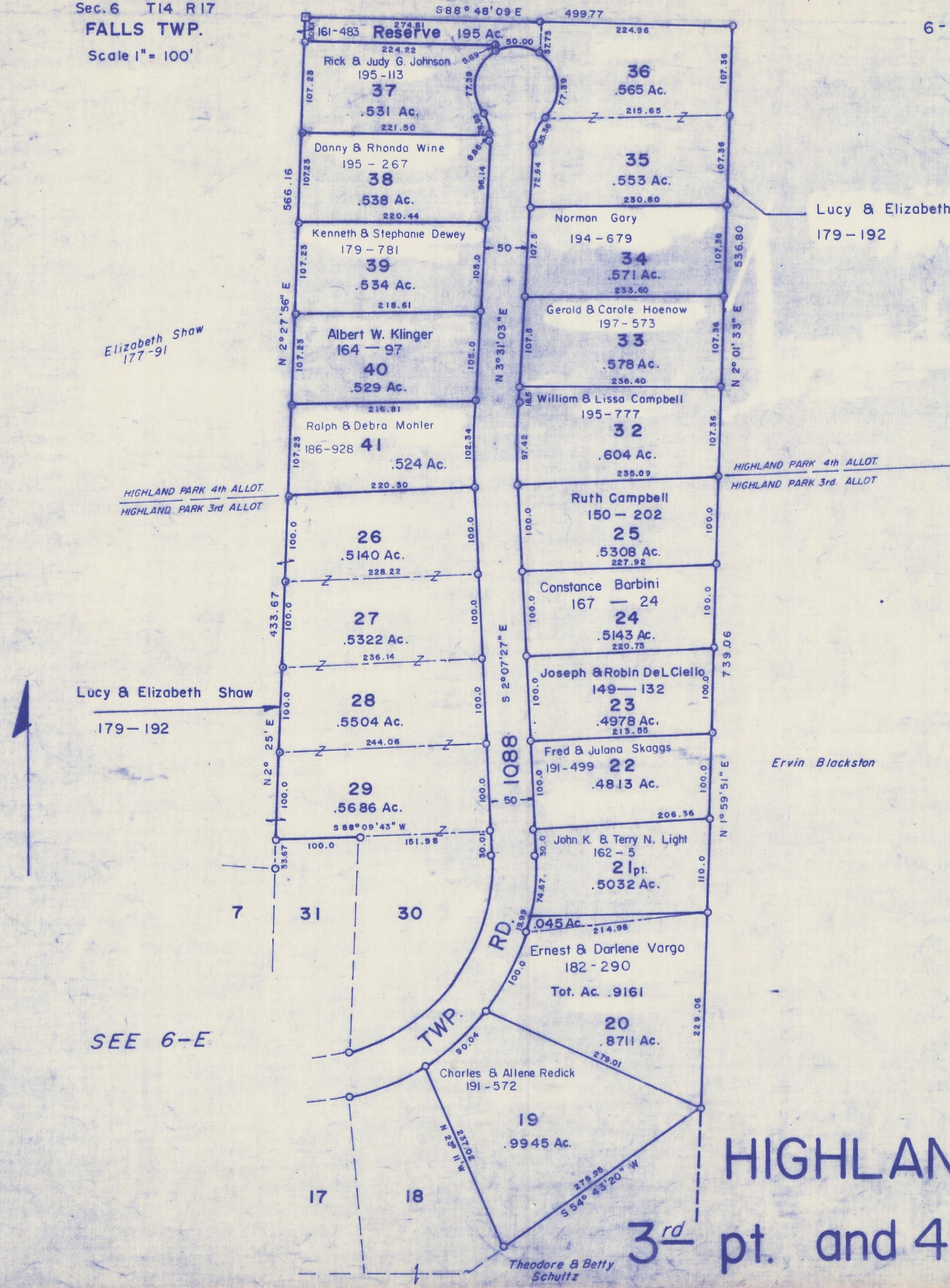
HOCKING COUNTY

Sec. 6 T14 R17

FALLS TWP.

Scale 1" = 100'

6-F



Elizabeth Shaw
177-91

Lucy & Elizabeth Shaw
179-192

HIGHLAND PARK 4th ALLOT.
HIGHLAND PARK 3rd ALLOT.

HIGHLAND PARK 4th ALLOT.
HIGHLAND PARK 3rd ALLOT.

Lucy & Elizabeth Shaw
179-192

Ervin Blackston

SEE 6-E

HIGHLAND PARK
3rd pt. and 4th 6-F