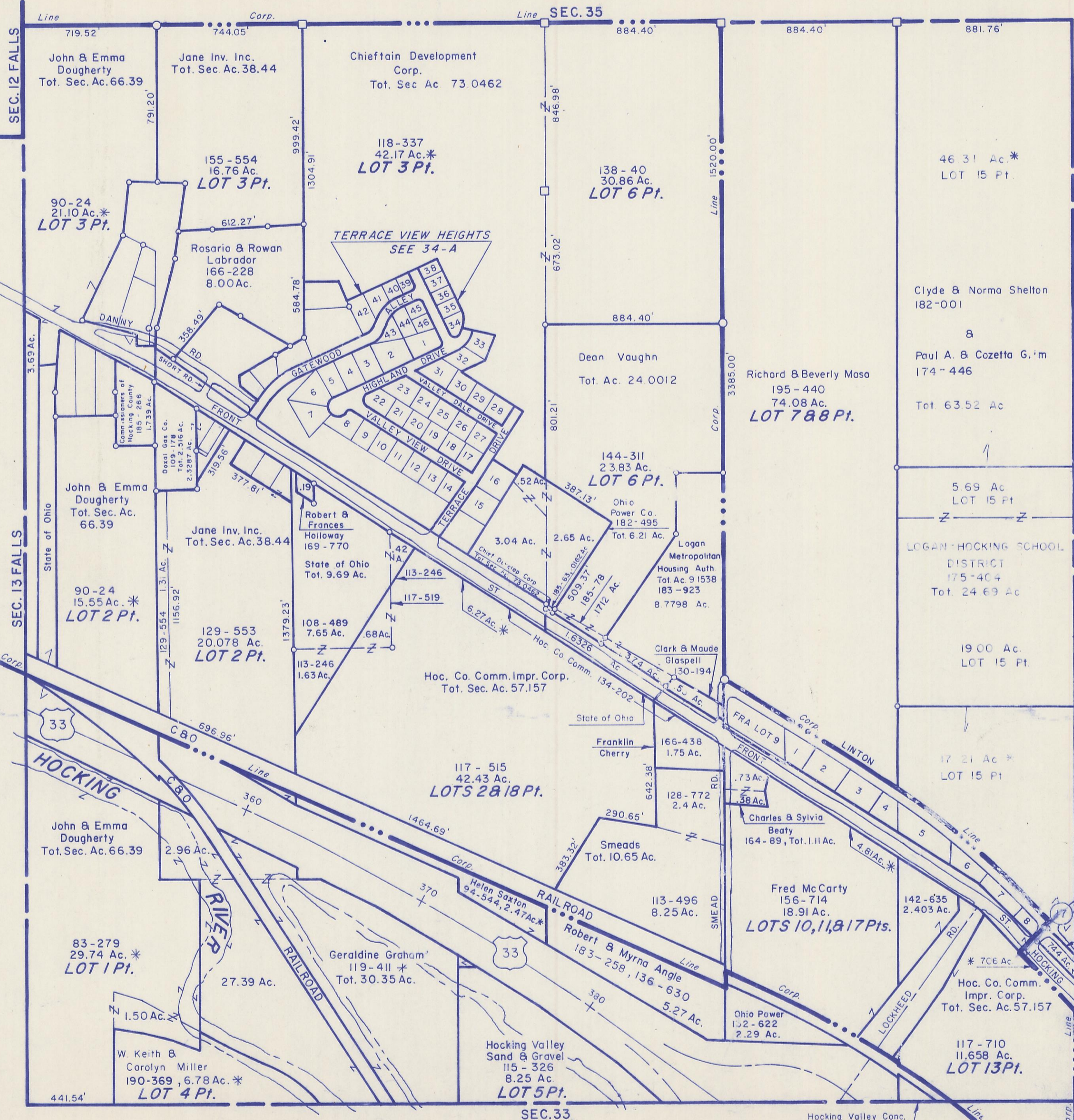


HOCKING COUNTY

GREEN TWP.

SEC. 34 T 13 R 16

Scale 1" = 400'



SEC. 12 FALLS

SEC. 13 FALLS

SEC. 35

SEC. 33

SEC. 28

SEC 34

John & Emma Dougherty
Tot. Sec. Ac. 66.39

Jane Inv. Inc.
Tot. Sec. Ac. 38.44

Chieftain Development Corp.
Tot. Sec. Ac. 73.0462

90-24
21.10 Ac.*
LOT 3 Pt.

155-554
16.76 Ac.
LOT 3 Pt.

118-337
42.17 Ac.*
LOT 3 Pt.

138-40
30.86 Ac.
LOT 6 Pt.

46.31 Ac.*
LOT 15 Pt.

Rosario & Rowan Labrador
166-228
8.00 Ac.

TERRACE VIEW HEIGHTS
SEE 34-A

Dean Vaughn
Tot. Ac. 24.0012

Clyde & Norma Shelton
182-001

Paul A. & Cozetta G. 'm
174-446

Richard & Beverly Maso
195-440
74.08 Ac.
LOT 7 & 8 Pt.

John & Emma Dougherty
Tot. Sec. Ac. 66.39

Jane Inv. Inc.
Tot. Sec. Ac. 38.44

Robert & Frances Holloway
169-770

144-311
23.83 Ac.
LOT 6 Pt.

5.69 Ac
LOT 15 Ft

LOGAN-HOCKING SCHOOL DISTRICT
175-404
Tot. 24.69 Ac

90-24
15.55 Ac.*
LOT 2 Pt.

129-553
20.078 Ac.
LOT 2 Pt.

108-489
7.65 Ac.

Ohio Power Co.
182-495
Tot. 6.21 Ac.

19.00 Ac.
LOT 15 Pt.

Hoc. Co. Comm. Impr. Corp.
Tot. Sec. Ac. 57.157

117-515
42.43 Ac.
LOTS 2 & 18 Pt.

John & Emma Dougherty
Tot. Sec. Ac. 66.39

Franklin Cherry
166-438
1.75 Ac.

FRA LOT 9

83-279
29.74 Ac.*
LOT 1 Pt.

Geraldine Graham
119-411 *
Tot. 30.35 Ac.

Helen Saxton
94-544, 2.47 Ac.*

Robert & Myrna Angle
183-258, 136-630
5.27 Ac.

Fred McCarty
156-714
18.91 Ac.
LOTS 10, 11, & 17 Pts.

W Keith & Carolyn Miller
190-369, 6.78 Ac.*
LOT 4 Pt.

Hocking Valley Sand & Gravel
115-326
8.25 Ac.
LOT 5 Pt.

Ohio Power
152-622
2.29 Ac.

117-710
11.658 Ac.
LOT 13 Pt.

Hocking Valley Conc.
124-386, .18 Ac.