

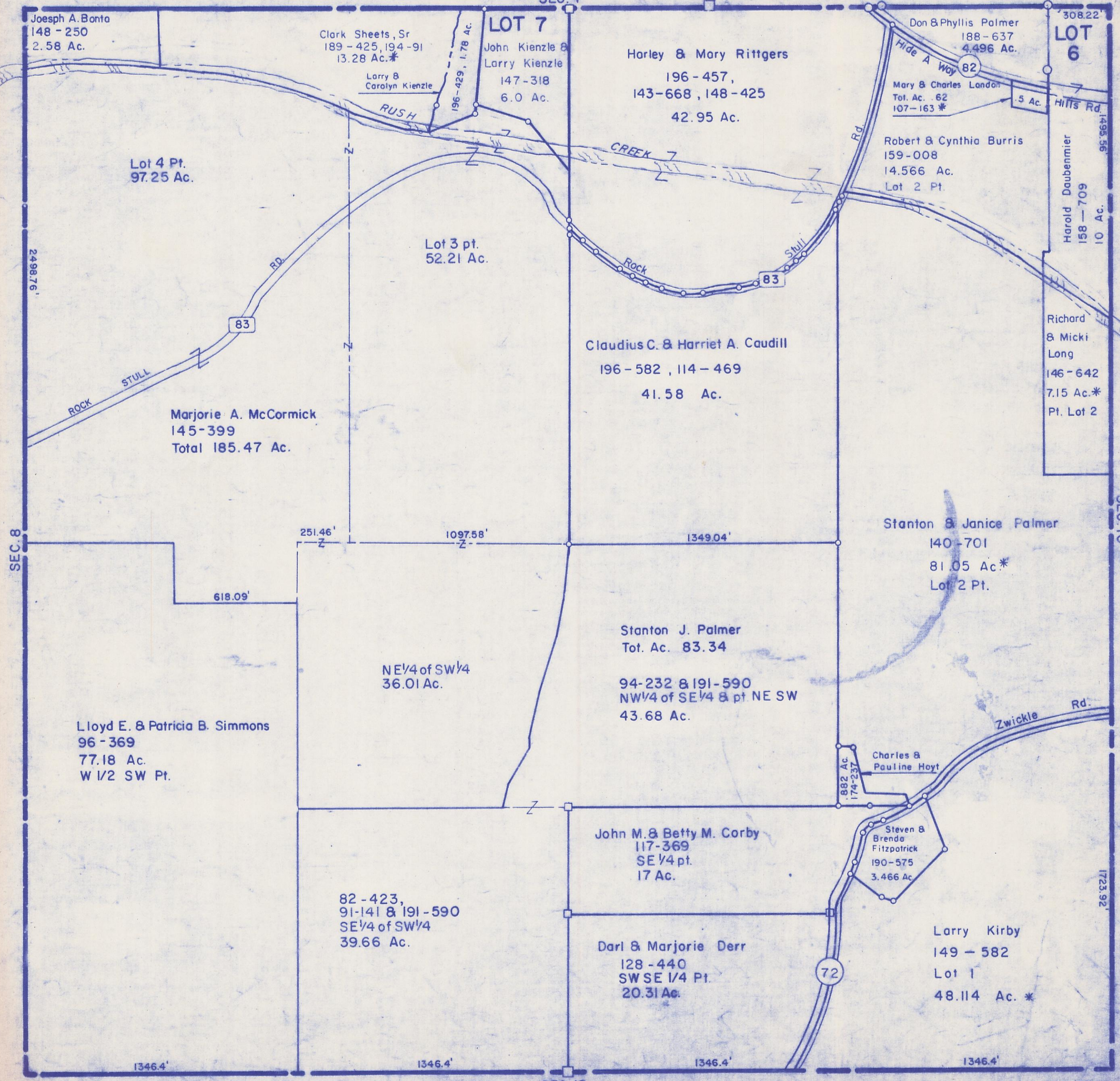
HOCKING COUNTY

SEC. 9 T 15 R 17

MARION TWP.

Scale: 1" = 400'

SEC. 4



Joseph A. Bonta
148 - 250
2.58 Ac.

Clark Sheets, Sr
189 - 425, 194 - 91
13.28 Ac.*

LOT 7
John Kienzle &
Larry Kienzle
147 - 318
6.0 Ac.

Harley & Mary Rittgers
196 - 457,
143 - 668, 148 - 425
42.95 Ac.

Don & Phyllis Palmer
188 - 637
4.496 Ac.

LOT 6

Mary & Charles Landon
Tot. Ac. .62
107 - 163 *

Robert & Cynthia Burris
159 - 008
14.566 Ac.
Lot 2 Pt.

Lot 4 Pt.
97.25 Ac.

Lot 3 pt.
52.21 Ac.

Claudius C. & Harriet A. Caudill
196 - 582, 114 - 469
41.58 Ac.

Harold Daubenmier
158 - 709
10 Ac.

Richard
& Micki
Long
146 - 642
7.15 Ac.*
Pt. Lot 2

Marjorie A. McCormick
145 - 399
Total 185.47 Ac.

Stanton & Janice Palmer
140 - 701
81.05 Ac.*
Lot 2 Pt.

Stanton J. Palmer
Tot. Ac. 83.34

94 - 232 & 191 - 590
NW 1/4 of SE 1/4 & pt NE SW
43.68 Ac.

Lloyd E. & Patricia B. Simmons
96 - 369
77.18 Ac.
W 1/2 SW Pt.

NE 1/4 of SW 1/4
36.01 Ac.

Charles &
Pauline Hoyt

John M. & Betty M. Corby
117 - 369
SE 1/4 pt.
17 Ac.

Steven &
Brenda
Fitzpatrick
190 - 575
3.466 Ac.

82 - 423,
91 - 141 & 191 - 590
SE 1/4 of SW 1/4
39.66 Ac.

Darl & Marjorie Derr
128 - 440
SW SE 1/4 Pt.
20.31 Ac.

Larry Kirby
149 - 582
Lot 1
48.114 Ac. *

1346.4'

1346.4'

1346.4'

1346.4'

SEC. 16

SEC. 9