

HOCKING COUNTY

PERRY TWP.

SEC. 31 T 12 R 19

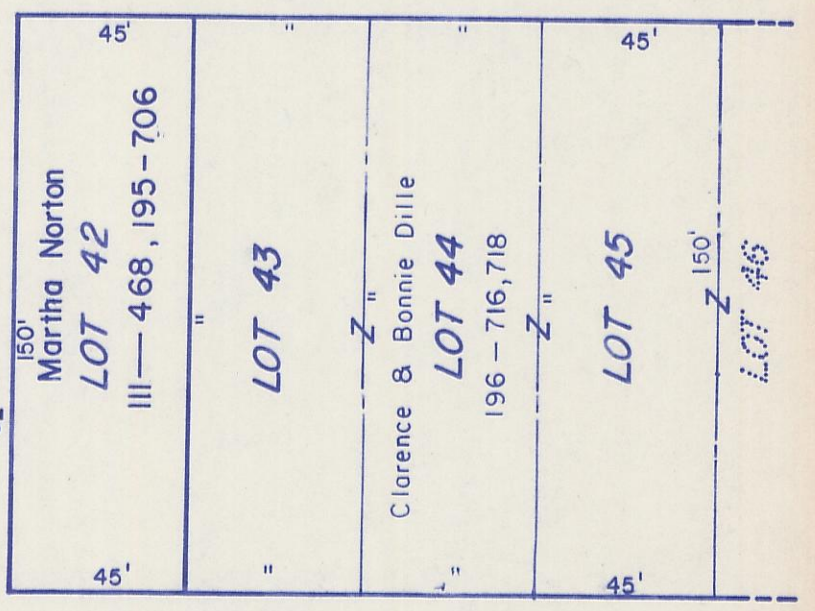
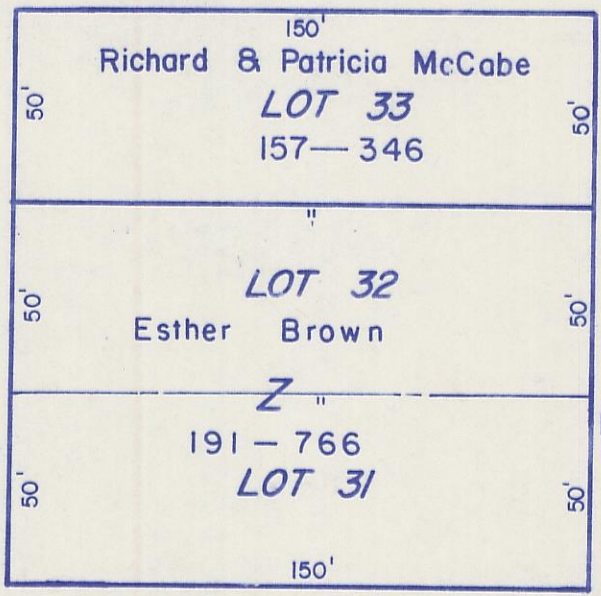
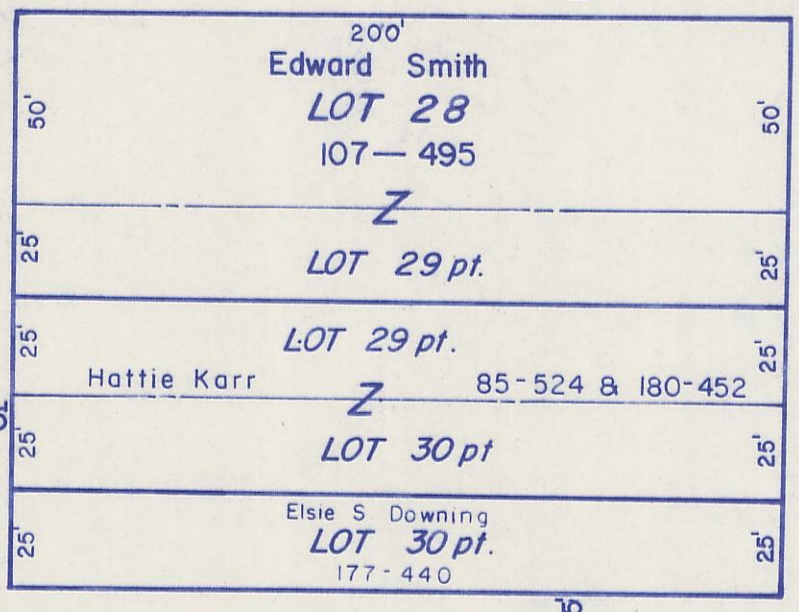
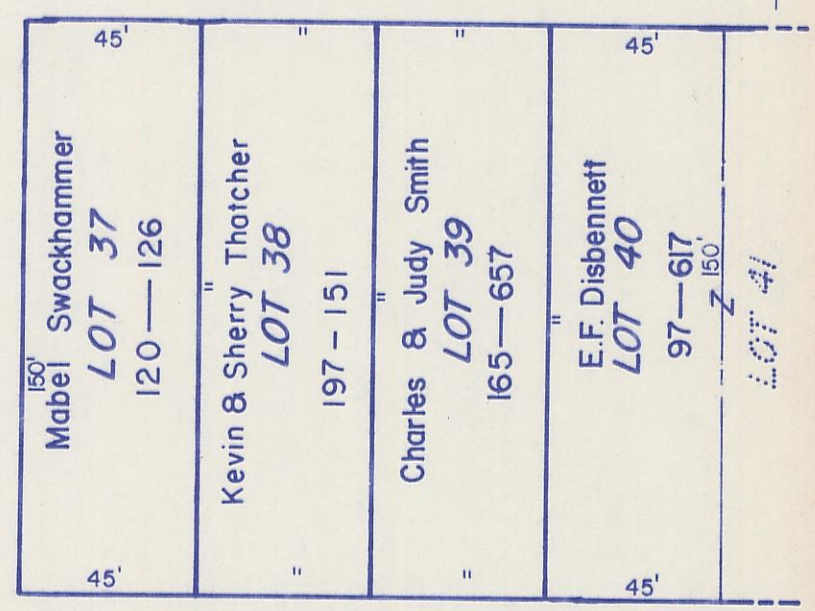
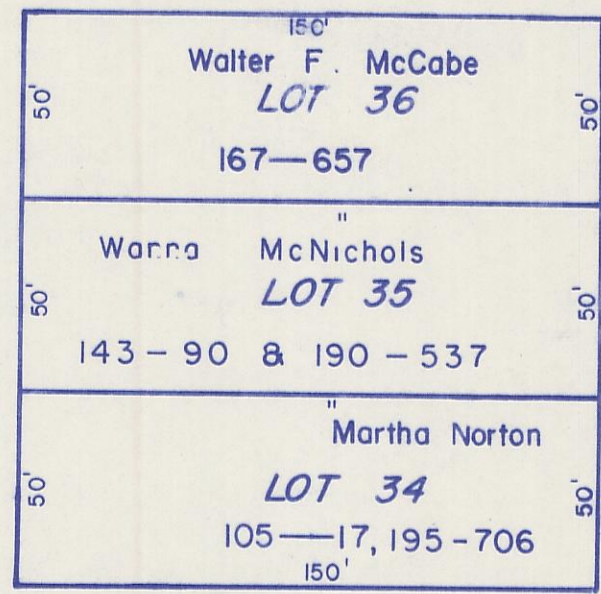
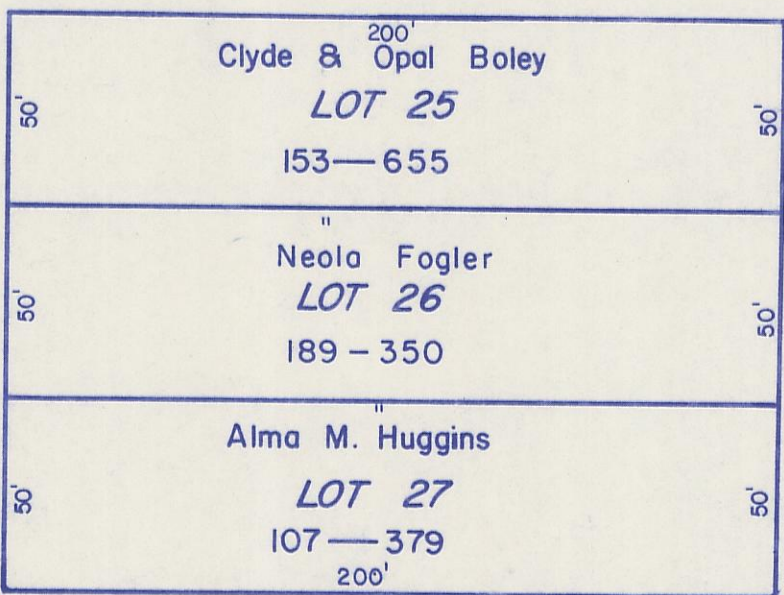
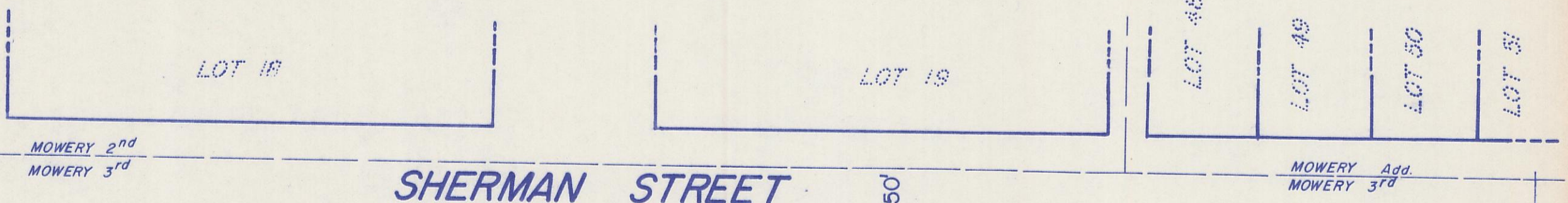
LAURELVILLE

31-J

SEE PAGE 31-G



PICKWAY COUNTY
HOCKING COUNTY
SALT CREEK TOWNSHIP
PERRY TOWNSHIP
SECTION 36
SECTION 31
CORP LINE



66' MAIN STREET

CLEVELAND STREET 50'

MOWERY 3rd pt

LAURELVILLE 31-J

SEE PAGE 31-K