

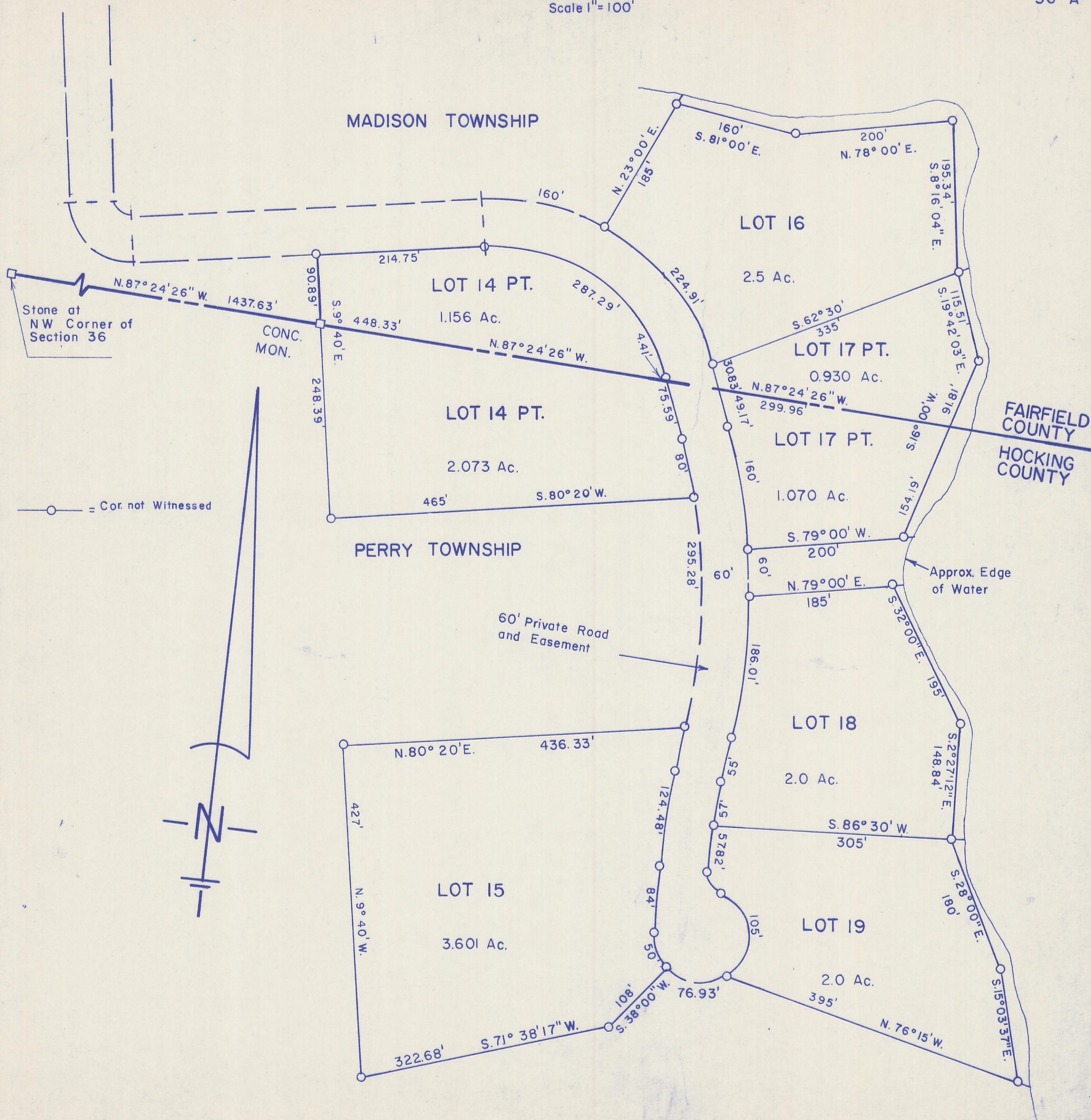
HOCKING COUNTY

Sec. 36 T13 R19

PERRY TWP.

Scale 1" = 100'

36-A



Stone at NW Corner of Section 36

CONC. MON.

○ = Cor. not Witnessed

60' Private Road and Easement

Approx. Edge of Water

SNORTIN RIDGE 36-A

(Top Tier)