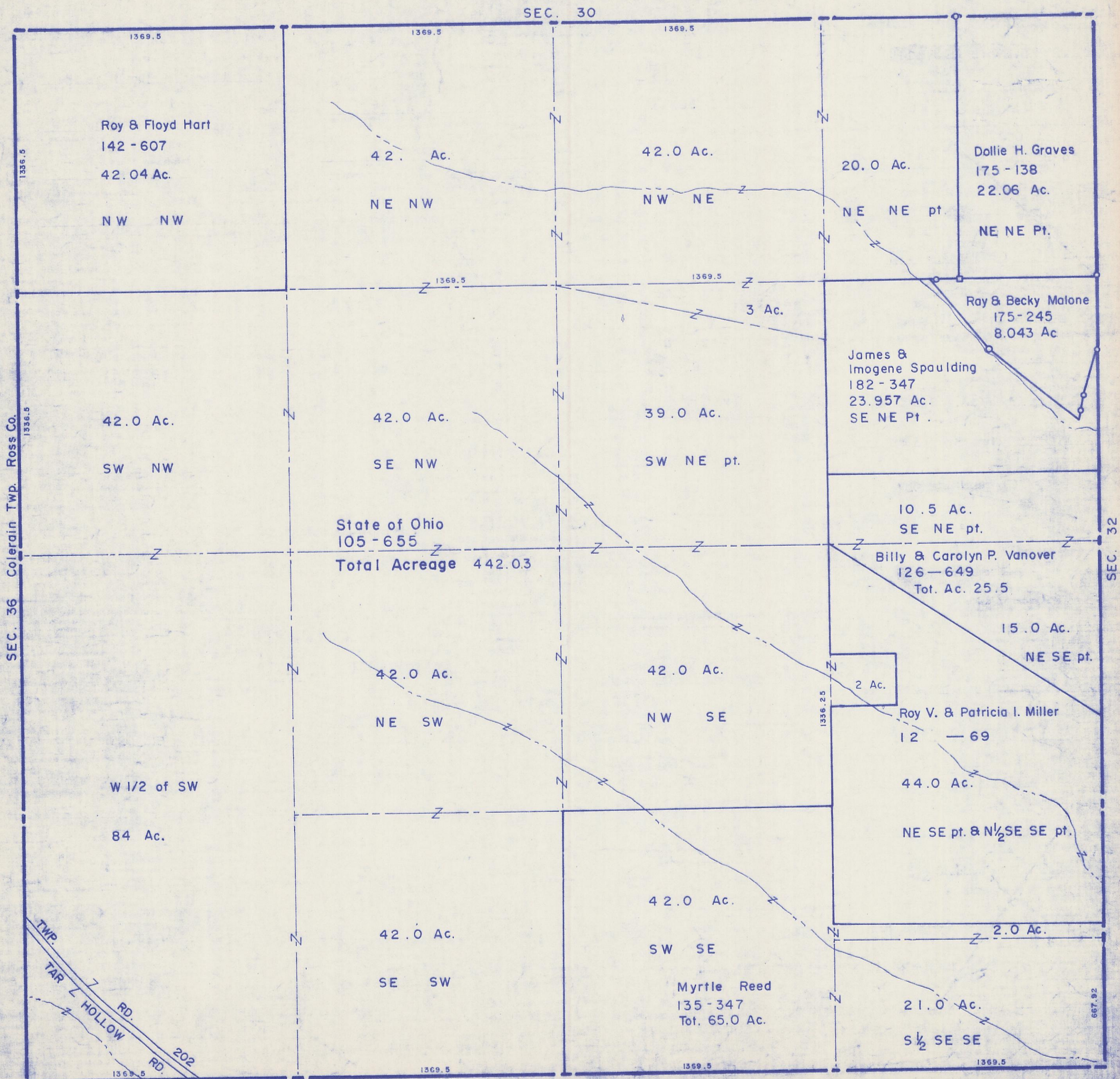


HOCKING COUNTY

Sec. 31 T11 R19

SALT CREEK TWP.

Scale 1" = 400'



SEC. 36 Colerain Twp. Ross Co.

SEC. 30

SEC. 32

SEC. 6

SEC. 31

Roy & Floyd Hart
142 - 607
42.04 Ac.

42.0 Ac.
NE NW

42.0 Ac.
NW NE

20.0 Ac.
NE NE pt.

Dollie H. Graves
175 - 138
22.06 Ac.
NE NE Pt.

42.0 Ac.
SW NW

42.0 Ac.
SE NW

39.0 Ac.
SW NE pt.

James &
Imogene Spaulding
182 - 347
23.957 Ac.
SE NE Pt.

Ray & Becky Malone
175 - 245
8.043 Ac.

State of Ohio
105 - 655
Total Acreage 442.03

10.5 Ac.
SE NE pt.

Billy & Carolyn P. Vanover
126 - 649
Tot. Ac. 25.5

15.0 Ac.
NE SE pt.

W 1/2 of SW
84 Ac.

42.0 Ac.
NE SW

42.0 Ac.
NW SE

2 Ac.

Roy V. & Patricia I. Miller
12 - 69

44.0 Ac.

NE SE pt. & N 1/2 SE SE pt.

42.0 Ac.
SE SW

42.0 Ac.
SW SE

2.0 Ac.

Myrtle Reed
135 - 347
Tot. 65.0 Ac.

21.0 Ac.
S 1/2 SE SE

TWP
TAR HOLLOW RD.
RD. 202