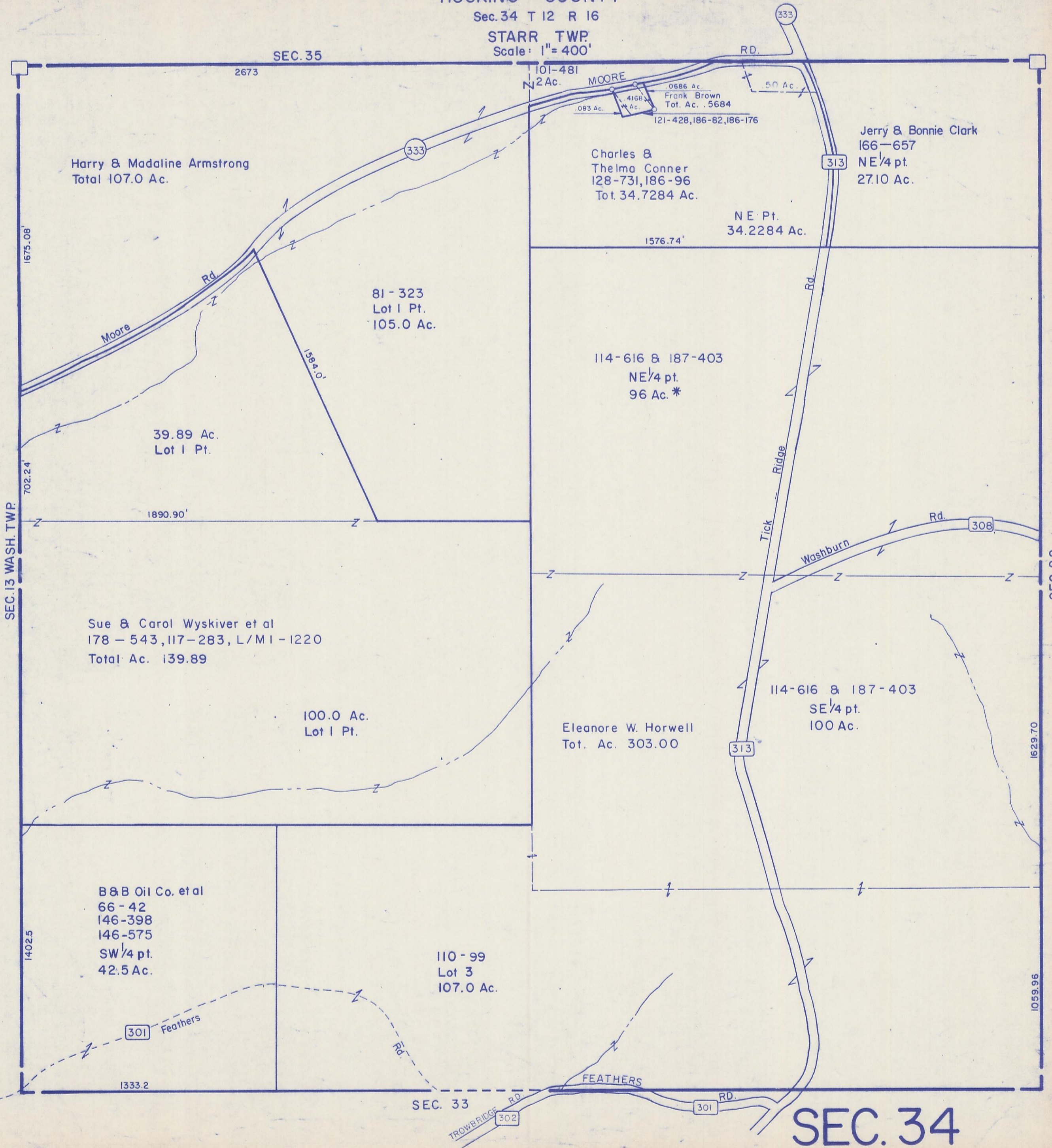


HOCKING COUNTY

Sec. 34 T 12 R 16

STARR TWP.

Scale: 1" = 400'



SEC. 13 WASH. TWP.

SEC. 28

SEC. 35

SEC. 33

SEC. 34

Harry & Madaline Armstrong
Total 107.0 Ac.

Charles &
Thelma Conner
128-731, 186-96
Tot. 34.7284 Ac.

Jerry & Bonnie Clark
166-657
NE 1/4 pt.
27.10 Ac.

81-323
Lot 1 Pt.
105.0 Ac.

114-616 & 187-403
NE 1/4 pt.
96 Ac. *

39.89 Ac.
Lot 1 Pt.

Sue & Carol Wiskiver et al
178-543, 117-283, L/M1-1220
Total Ac. 139.89

100.0 Ac.
Lot 1 Pt.

Eleanore W. Horwell
Tot. Ac. 303.00

114-616 & 187-403
SE 1/4 pt.
100 Ac.

B & B Oil Co. et al
66-42
146-398
146-575
SW 1/4 pt.
42.5 Ac.

110-99
Lot 3
107.0 Ac.

301 Feathers

TROWRIDGE RD
302

301 RD.

1675.08'

702.24'

1402.5

1333.2

2673

101-481
2 Ac.

MOORE
4168
Ac.

0686 Ac.
Frank Brown
Tot. Ac. 5684

121-428, 186-82, 186-176

333

333

313

NE Pt.
34.2284 Ac.

1576.74'

1584.0'

1890.90'

Tick Ridge Rd.

Washburn Rd.

308

313

1629.70

1059.96

FEATHERS