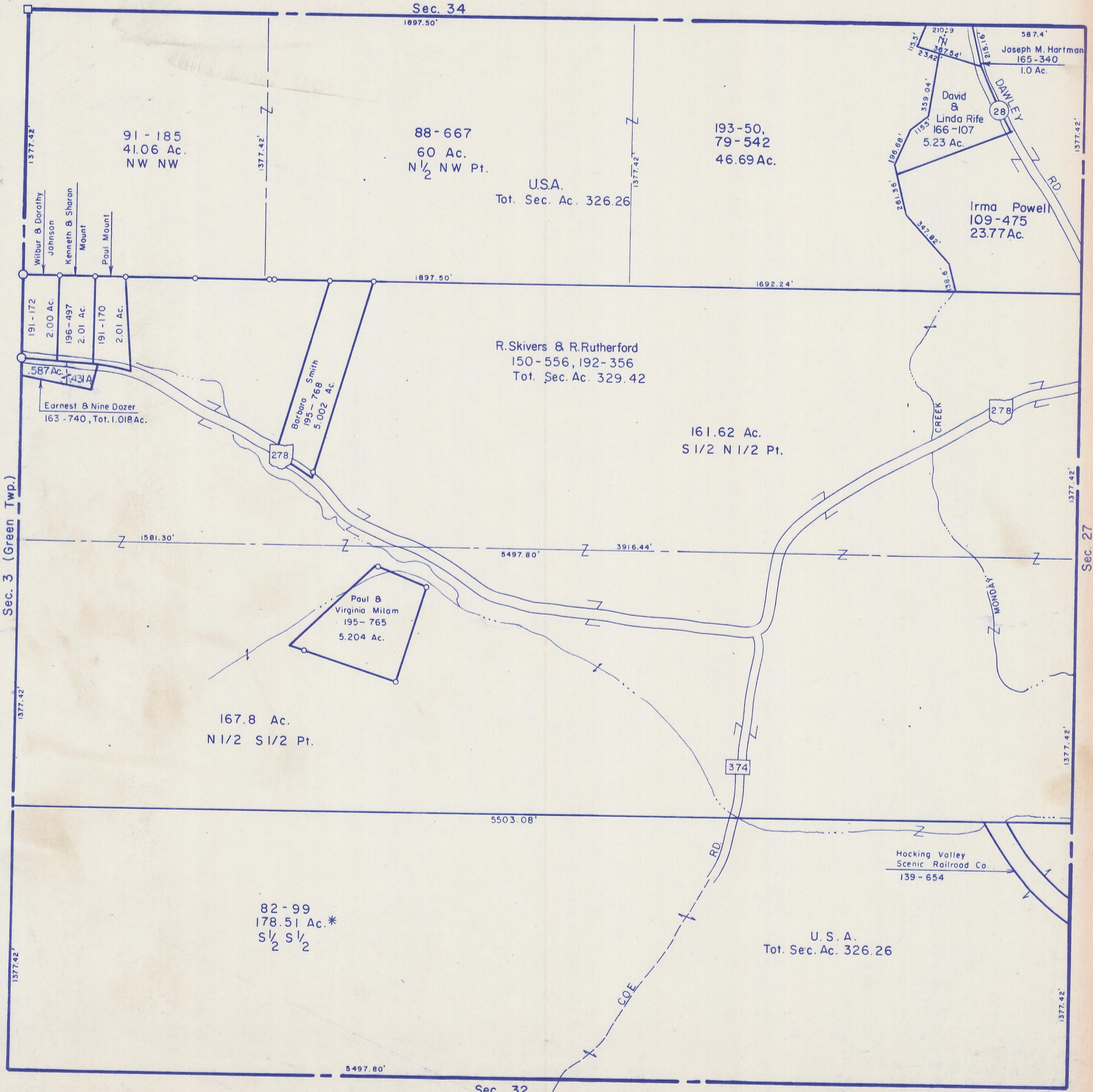


HOCKING COUNTY

Sec. 33 T13 R15

WARD TWP

Scale 1" = 400'



91-185
41.06 Ac.
NW NW

88-667
60 Ac.
N 1/2 NW Pt.

193-50,
79-542
46.69 Ac.

Joseph M. Hartman
165-340
1.0 Ac.

David &
Linda Rife
166-107
5.23 Ac.

Irma Powell
109-475
23.77 Ac.

U.S.A.
Tot. Sec. Ac. 326.26

R. Skivers & R. Rutherford
150-556, 192-356
Tot. Sec. Ac. 329.42

161.62 Ac.
S 1/2 N 1/2 Pt.

191-172
2.00 Ac.
196-497
2.01 Ac.
191-170
2.01 Ac.

Earnest & Nine Dozer
163-740, Tot. 1.018 Ac.

Barbara Smith
195-768
5.002 Ac.

Paul &
Virginia Milam
195-765
5.204 Ac.

167.8 Ac.
N 1/2 S 1/2 Pt.

82-99
178.51 Ac.*
S 1/2 S 1/2

U.S.A.
Tot. Sec. Ac. 326.26

Hocking Valley
Scenic Railroad Co.
139-654

Sec. 33