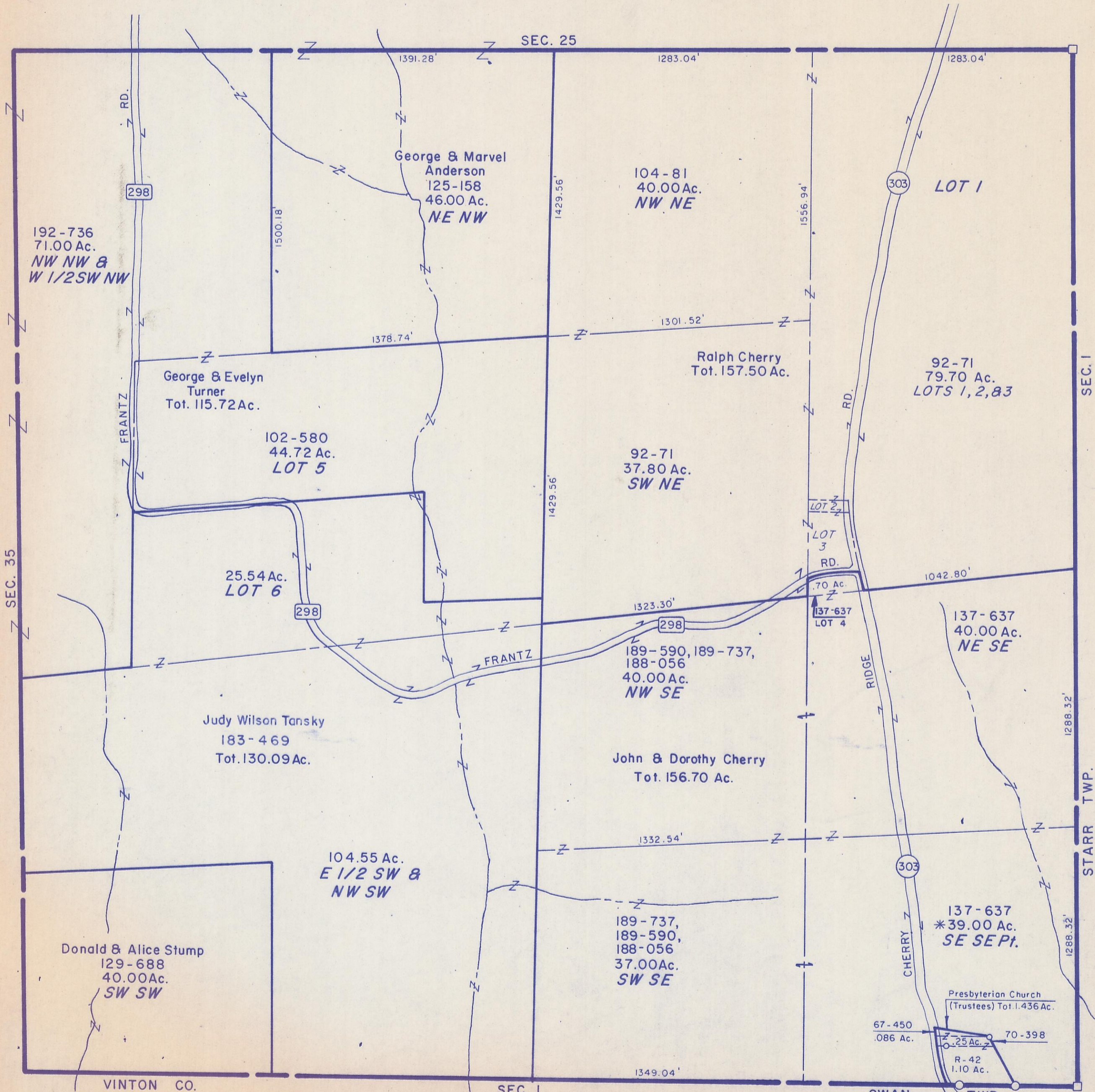


HOCKING COUNTY

WASHINGTON TWP.

SEC. 36 T 13 R 17

Scale 1"=400'



192-736  
71.00 Ac.  
NW NW &  
W 1/2 SW NW

George & Marvel  
Anderson  
125-158  
46.00 Ac.  
NE NW

104-81  
40.00 Ac.  
NW NE

303 LOT 1

George & Evelyn  
Turner  
Tot. 115.72 Ac.

Ralph Cherry  
Tot. 157.50 Ac.

92-71  
79.70 Ac.  
LOTS 1, 2, 83

102-580  
44.72 Ac.  
LOT 5

92-71  
37.80 Ac.  
SW NE

25.54 Ac.  
LOT 6

189-590, 189-737,  
188-056  
40.00 Ac.  
NW SE

137-637  
40.00 Ac.  
NE SE

Judy Wilson Tansky  
183-469  
Tot. 130.09 Ac.

John & Dorothy Cherry  
Tot. 156.70 Ac.

104.55 Ac.  
E 1/2 SW &  
NW SW

189-737,  
189-590,  
188-056  
37.00 Ac.  
SW SE

137-637  
\*39.00 Ac.  
SE SEPT.

Donald & Alice Stump  
129-688  
40.00 Ac.  
SW SW

Presbyterian Church  
(Trustees) Tot. 1.436 Ac.

67-450  
.086 Ac.

R-42  
1.10 Ac.

70-398

VINTON CO.

SEC. 1

SWAN TWP.

SEC. 36