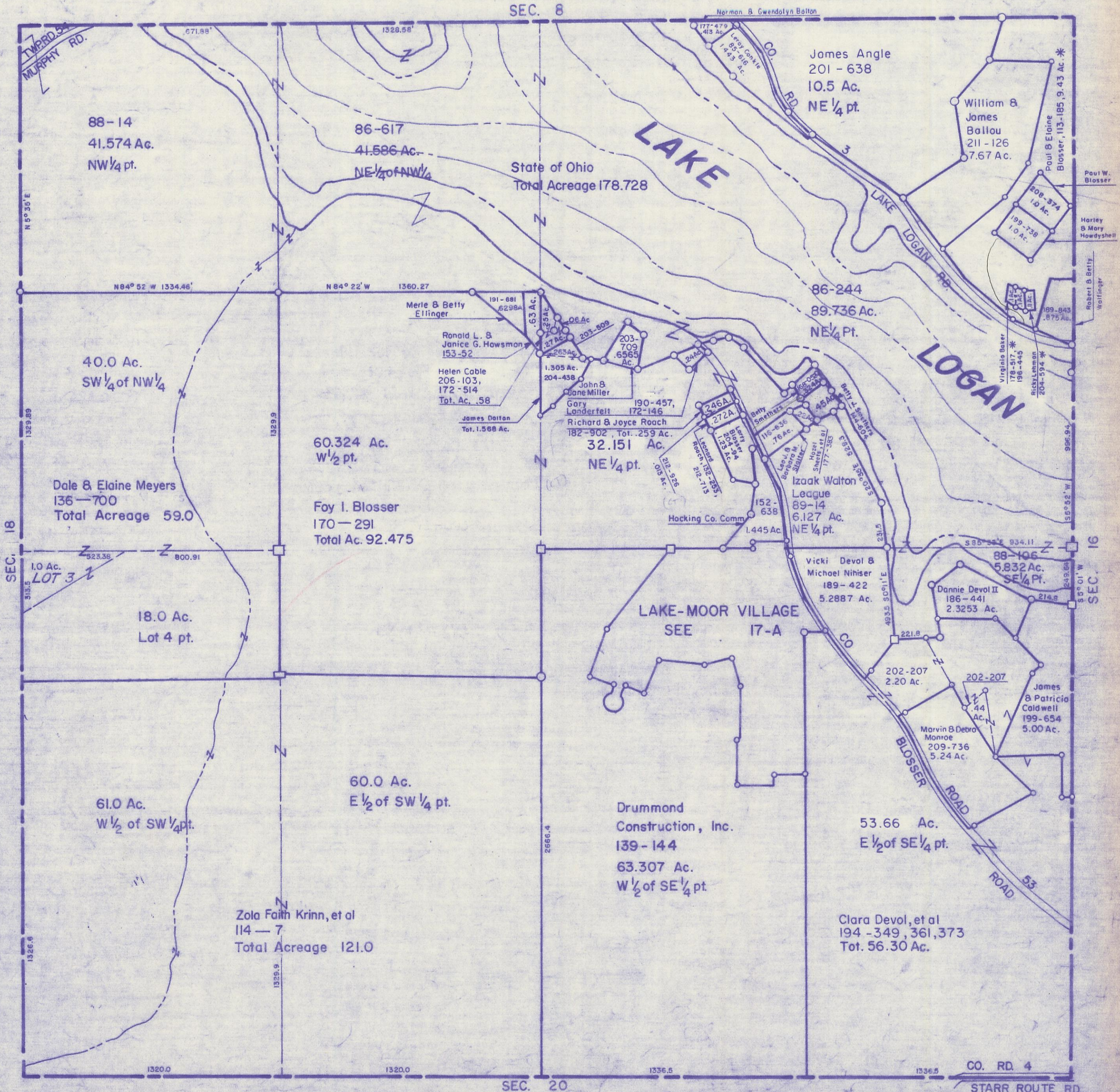


HOCKING COUNTY

Sec. 17 T14 R17

FALLS TWP.

Scale 1" = 400'



88-14
41.574 Ac.
NW 1/4 pt.

86-617
41.586 Ac.
NE 1/4 of NW 1/4

James Angle
201-638
10.5 Ac.
NE 1/4 pt.

William &
James
Ballou
211-126
7.67 Ac.

State of Ohio
Total Acreage 178.728

40.0 Ac.
SW 1/4 of NW 1/4

60.324 Ac.
W 1/2 pt.

86-244
89.736 Ac.
NE 1/4 pt.

Dale & Elaine Meyers
136-700
Total Acreage 59.0

Foy I. Blosser
170-291
Total Ac. 92.475

32.151 Ac.
NE 1/4 pt.

1.0 Ac.
LOT 3

18.0 Ac.
Lot 4 pt.

LAKE-MOOR VILLAGE
SEE 17-A

Vicki Devol &
Michael Nihiser
189-422
5.2887 Ac.

88-106
5.832 Ac.
SE 1/4 pt.

61.0 Ac.
W 1/2 of SW 1/4 pt.

60.0 Ac.
E 1/2 of SW 1/4 pt.

Drummond
Construction, Inc.
139-144
63.307 Ac.
W 1/2 of SE 1/4 pt.

53.66 Ac.
E 1/2 of SE 1/4 pt.

Zola Faith Krinn, et al
114-7
Total Acreage 121.0

Clara Devol, et al
194-349, 361, 373
Tot. 56.30 Ac.

SEC. 17