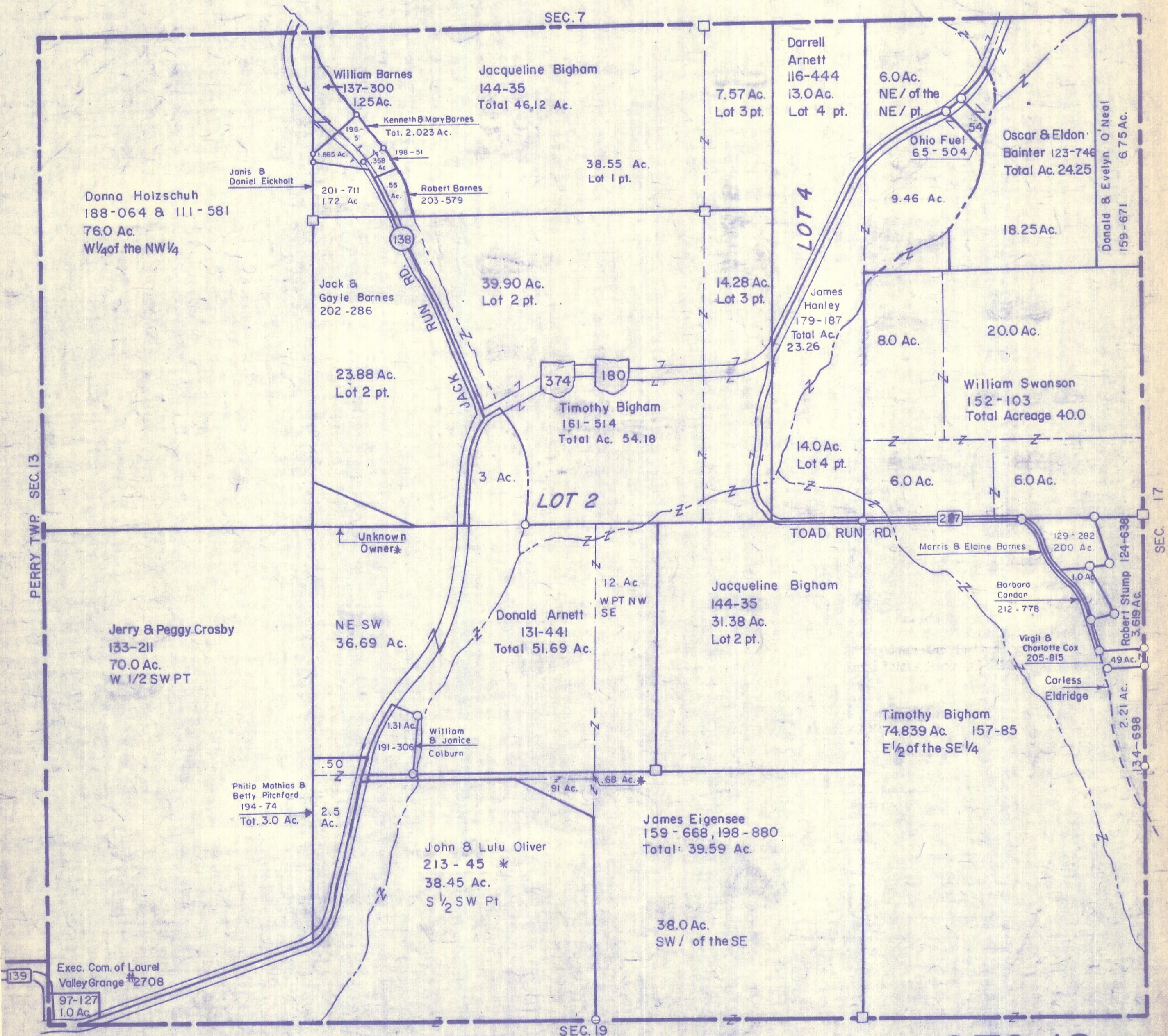


HOCKING COUNTY

LAUREL TWP

T.12 R.18

SEC. 18



SEC. 7

LOT 2

LOT 4

SEC. 17

SEC. 19

SEC. 18

Donna Holzschuh
188-064 & 111-581
76.0 Ac.
W 1/4 of the NW 1/4

Jerry & Peggy Crosby
133-211
70.0 Ac.
W 1/2 SW PT

Jacqueline Bigham
144-35
Total 46.12 Ac.

Donald Arnett
131-441
Total 51.69 Ac.

Darrell Arnett
116-444
13.0 Ac.
Lot 4 pt.

James Hanley
179-187
Total Ac. 23.26

Jacqueline Bigham
144-35
31.38 Ac.
Lot 2 pt.

Oscar & Eldon Bainter
123-746
Total Ac. 24.25

William Swanson
152-103
Total Acreage 40.0

Timothy Bigham
74.839 Ac. 157-85
E 1/2 of the SE 1/4

James Eigensee
159-668, 198-880
Total: 39.59 Ac.

38.0 Ac.
SW / of the SE

Jack & Gayle Barnes
202-286
39.90 Ac.
Lot 2 pt.

NE SW
36.69 Ac.

John & Lulu Oliver
213-45 *
38.45 Ac.
S 1/2 SW Pt

Unknown Owner*

38.55 Ac.
Lot 1 pt.

12 Ac.
WPT NW SE

8.0 Ac.

20.0 Ac.

6.0 Ac.

6.0 Ac.

Morris & Elaine Barnes
129-282
200 Ac.

Barbara Condon
212-778

Virgil & Charlotte Cox
205-815

Carless Eldridge

Donald & Evelyn O'Neal
159-671
6.75 Ac.

Robert Stump
124-638
3.619 Ac.

2.21 Ac.
134-698

William Barnes
137-300
1.25 Ac.

Kenneth & Mary Barnes
Tot. 2.023 Ac.

1.665 Ac.
198-51

1.358 Ac.
198-51

201-711
1.72 Ac.

Robert Barnes
203-579

.55 Ac.

138

3 Ac.

23.88 Ac.
Lot 2 pt.

Timothy Bigham
161-514
Total Ac. 54.18

374 180

3 Ac.

LOT 2

TOAD RUN RD

207

Exec. Com. of Laurel Valley Grange #2708

97-127
1.0 Ac.

PERRY TWP SEC. 13

SEC. 17