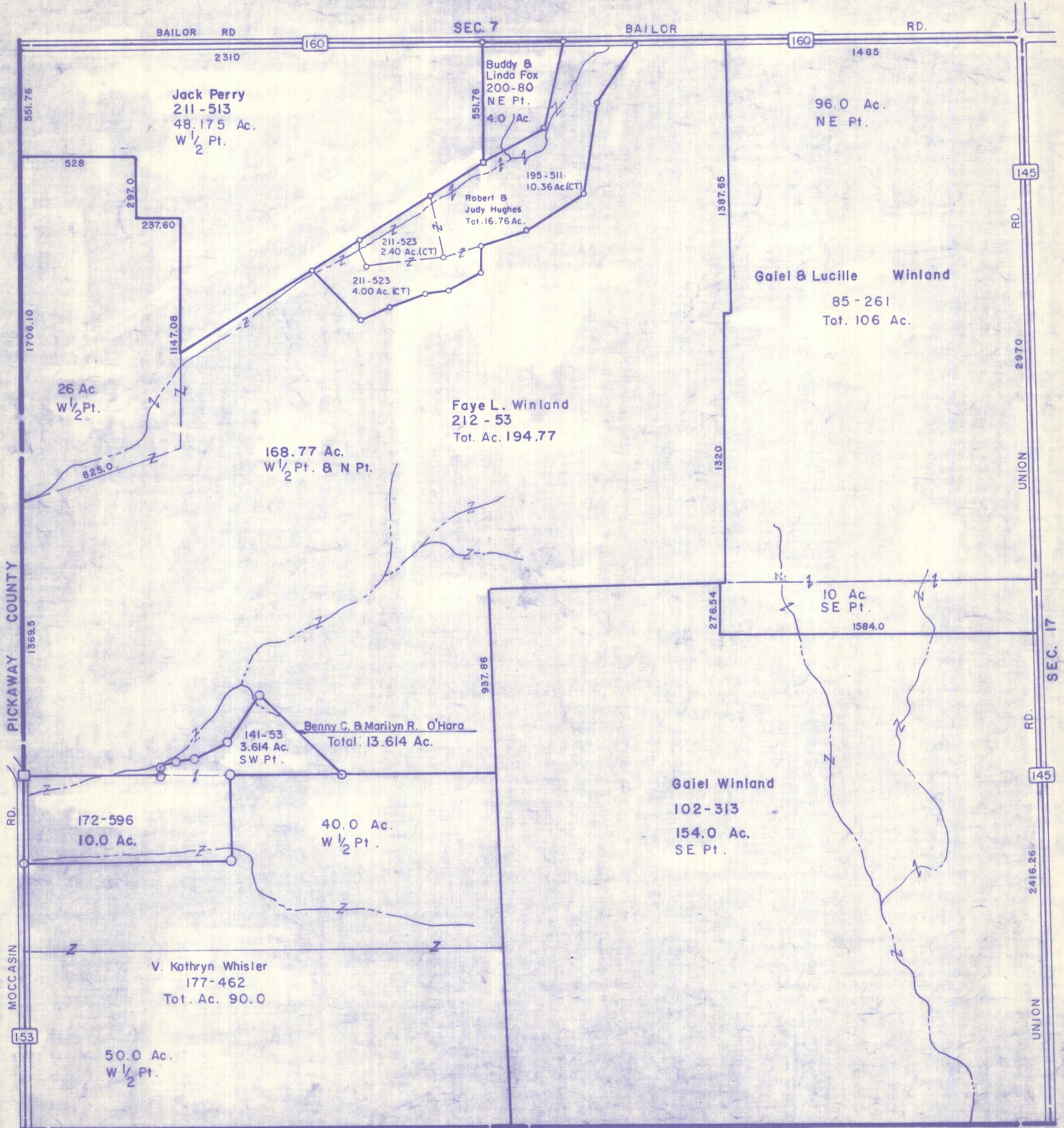


HOCKING COUNTY

SEC. 18 T.12 R.19

PERRY TWP.

Scale 1"=400'



BAILOR RD. 2310 160 1485 RD.

551.76 528 297.0 237.60 1147.08 1706.10 825.0 1369.5 1320 1387.65 2970 145 RD. UNION

SEC. 7

Buddy & Linda Fox  
200-80  
NE Pt.  
4.0 Ac.

96.0 Ac.  
NE Pt.

195-511  
10.36 Ac.(CT)

Robert & Judy Hughes  
Tot. 16.76 Ac.

211-523  
2.40 Ac.(CT)

211-523  
4.00 Ac.(CT)

26 Ac.  
W 1/2 Pt.

Faye L. Winland  
212-53  
Tot. Ac. 194.77

Gael & Lucille Winland  
85-261  
Tot. 106 Ac.

10 Ac.  
SE Pt.  
1584.0

Benny C. & Marilyn R. O'Hara  
Total: 13.614 Ac.

141-53  
3.614 Ac.  
SW Pt.

172-596  
10.0 Ac.

40.0 Ac.  
W 1/2 Pt.

Gael Winland  
102-313  
154.0 Ac.  
SE Pt.

V. Kathryn Whisler  
177-462  
Tot. Ac. 90.0

50.0 Ac.  
W 1/2 Pt.

276.54 937.86 2416.25 145 RD. UNION

PICKAWAY COUNTY

MOCCASIN RD. 153

SEC. 19

SEC. 17

SEC 18