

HOCKING COUNTY

PERRY TWP.

SEC. 31 T 12 R 19

LAURELVILLE

31-J

SEE PAGE 31-G

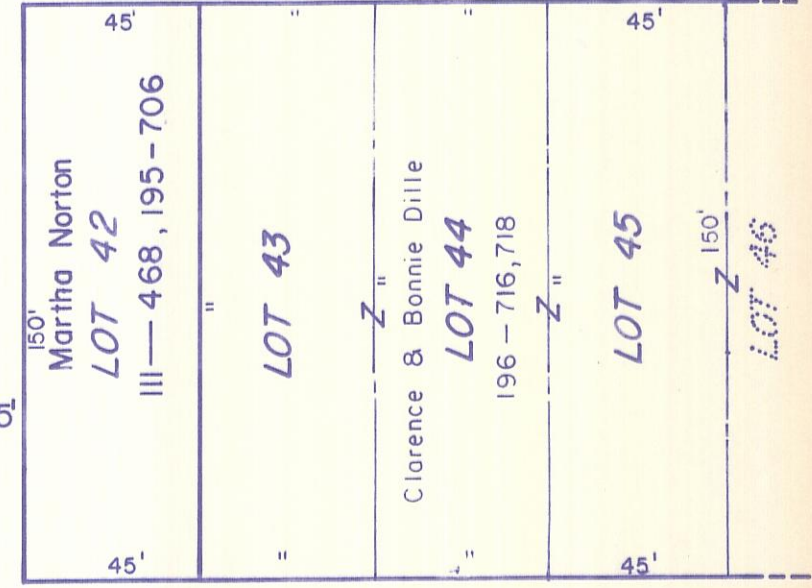
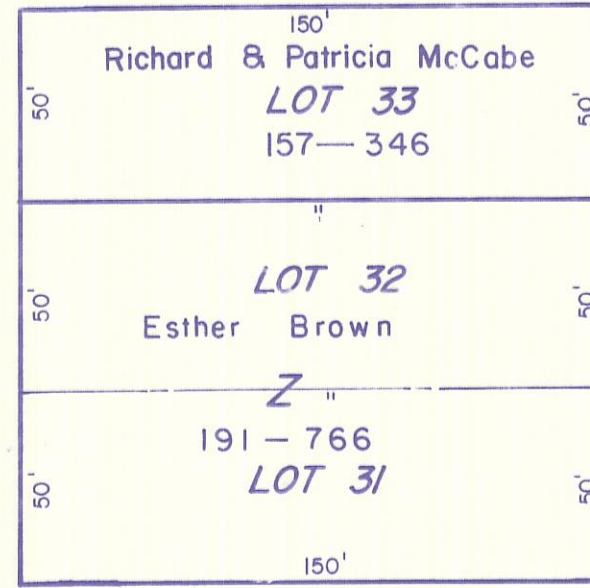
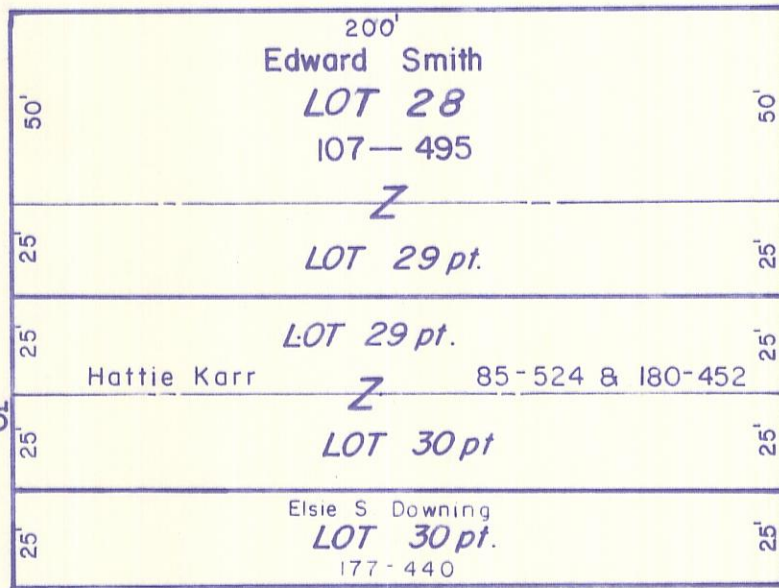
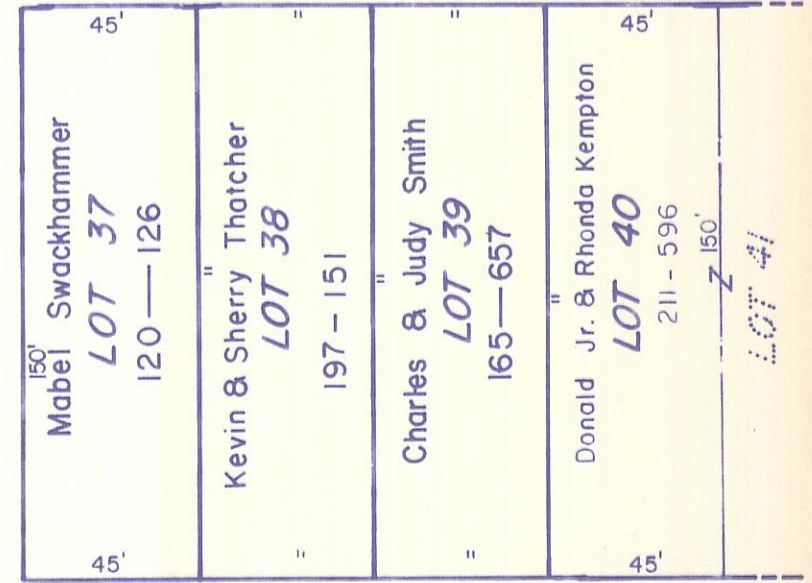
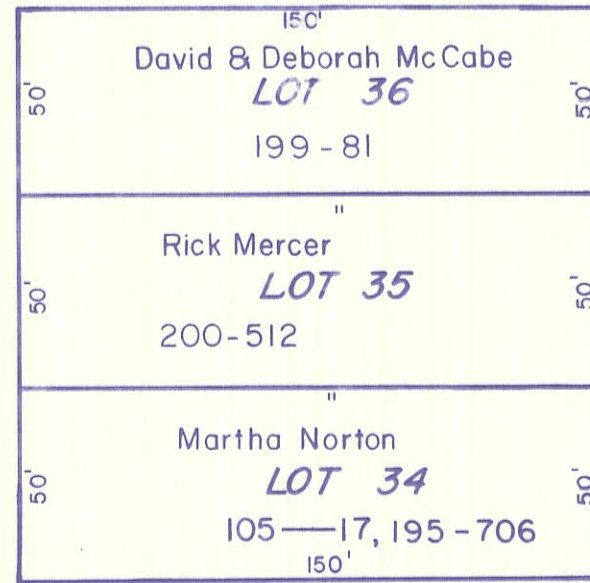
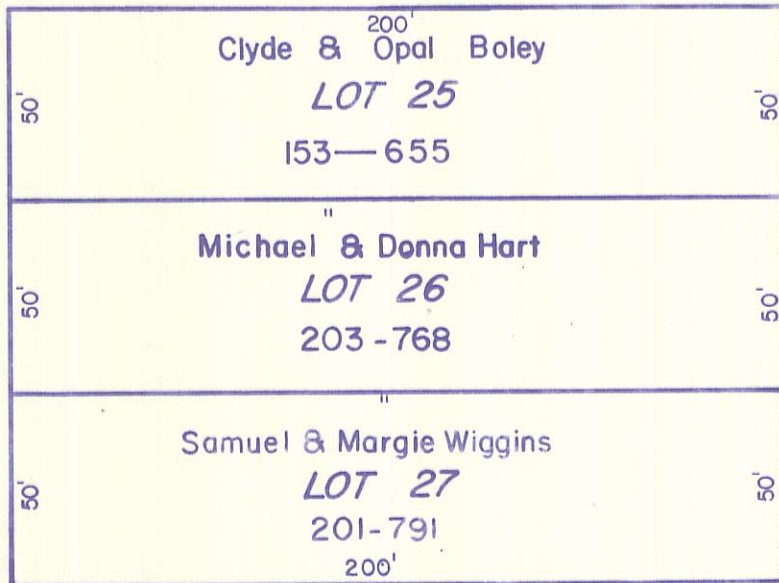


PICKWAY COUNTY SALICREEK TOWNSHIP SECTION 36 CORP LINE SECTION 31 PERRY TOWNSHIP

MOWERY 2nd
MOWERY 3rd

MOWERY Add.
MOWERY 3rd

SHERMAN STREET 50'



66' MAIN STREET

ALLEY

CLEVELAND STREET 50'

MOWERY 3rd Pt

LAURELVILLE 31-J

SEE PAGE 31-K