

HOCKING COUNTY

WARD TWP.

SEC. 20 T 13 R 15

U. S. A
73-126

Vergeania
Valentine
165-363

CARBON HILL BUTCHEL RD.
Jaymar Coal Co.
154-244

C-24

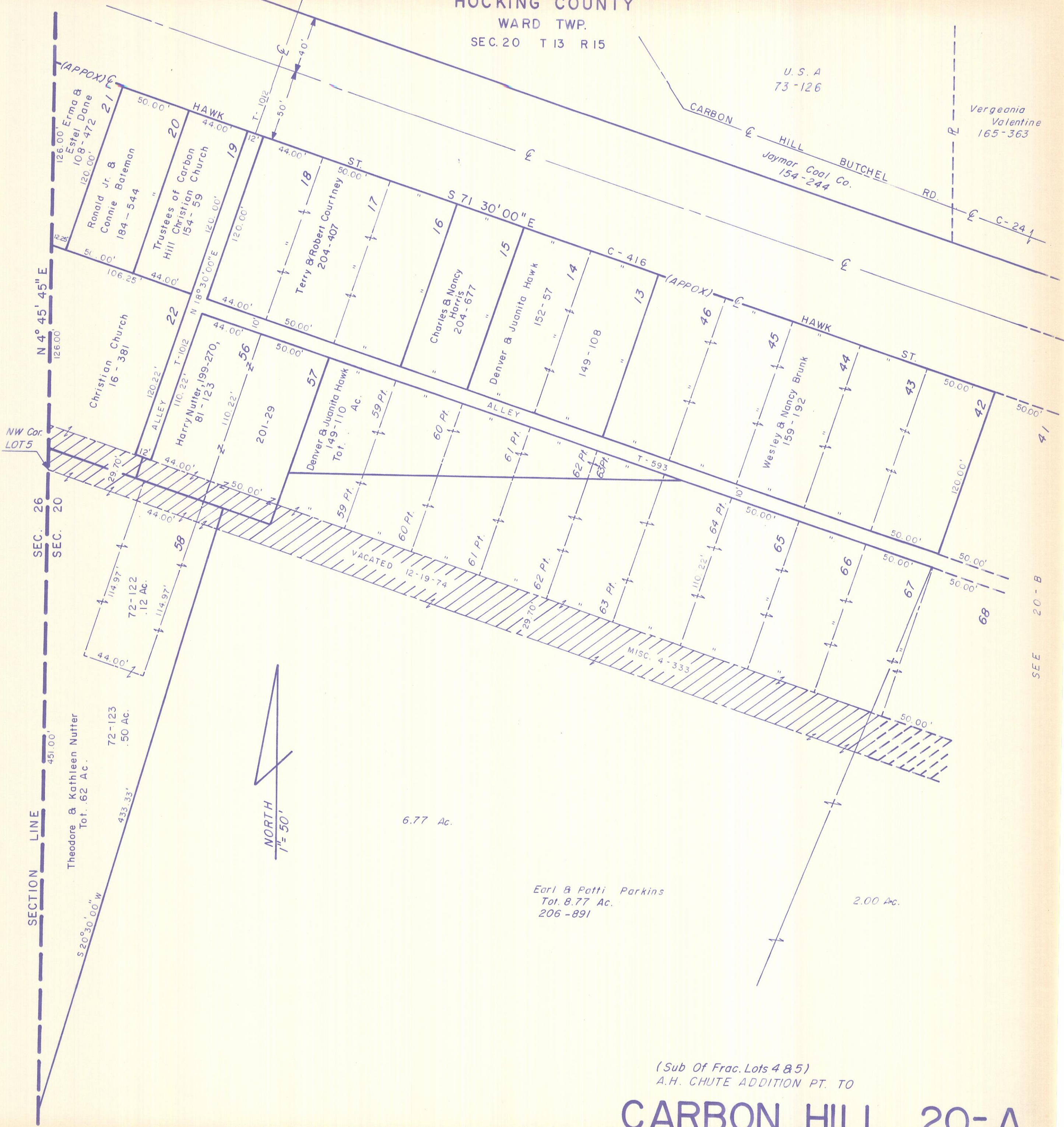
C-416

(APPOX)

HAWK ST.

HAWK ST.

SEE 20-B



N 4° 45' 45" E

SEC. 26
SEC. 20

SECTION LINE

Theodore & Kathleen Nutter
Tot. .62 Ac.

72-123
.50 Ac.

72-122
.12 Ac.

NORTH
1" = 50'

6.77 Ac.

Earl & Patti Parkins
Tot. 8.77 Ac.
206-891

2.00 Ac.

(Sub Of Frac. Lots 4 & 5)
A.H. CHUTE ADDITION PT. TO

CARBON HILL 20-A