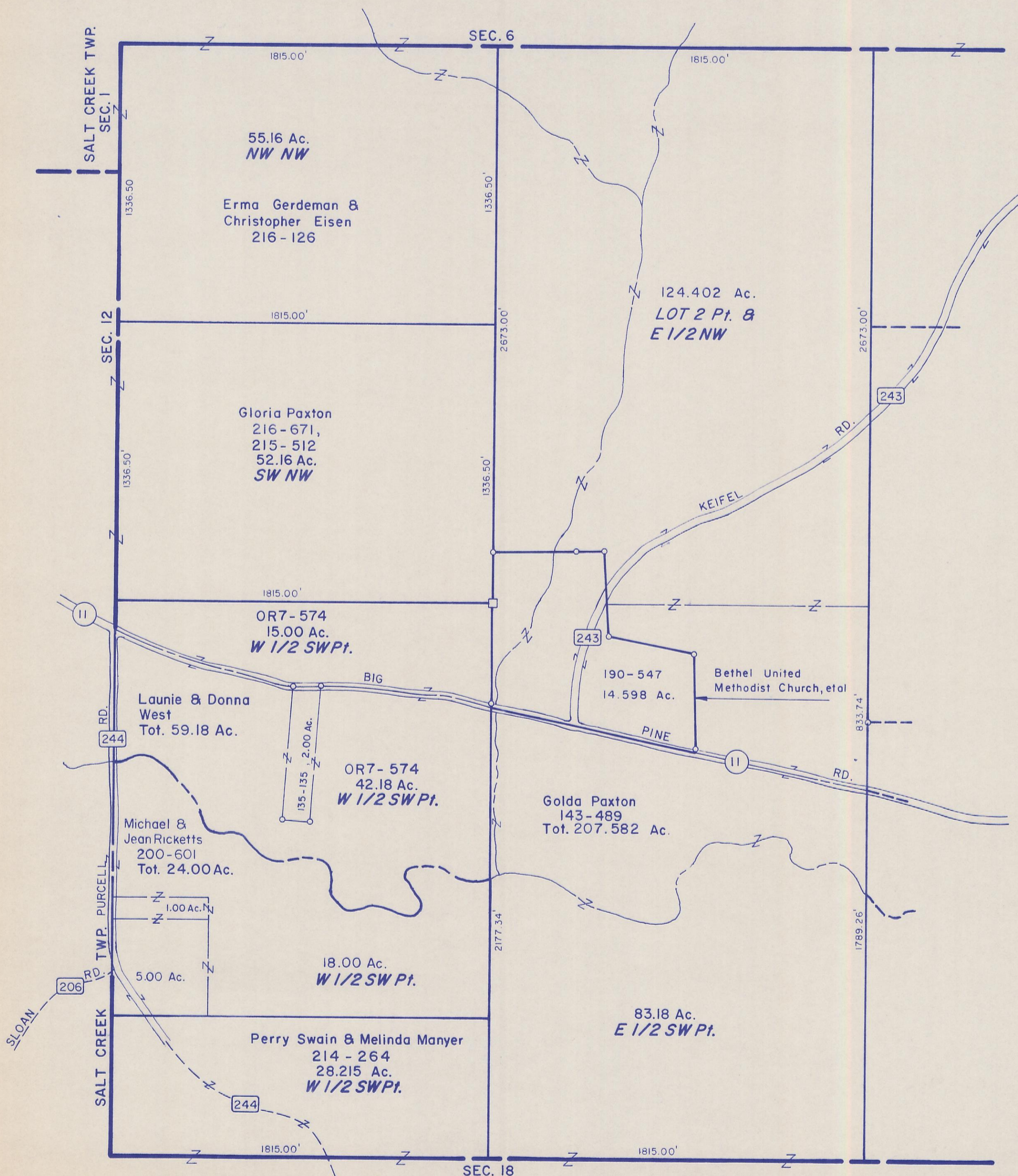


HOCKING COUNTY

BENTON TWP.

W Pt. SEC. 7 T11 R18

Scale 1"=400'



SALT CREEK TWP.  
SEC. 1

SEC. 12

SEC. 6

SEC. 18

SALT CREEK  
TWP. PURCELL

SLOAN

55.16 Ac.  
*NW NW*

Erma Gerdeman &  
Christopher Eisen  
216-126

Gloria Paxton  
216-671,  
215-512  
52.16 Ac.  
*SW NW*

OR7-574  
15.00 Ac.  
*W 1/2 SW Pt.*

Laurie & Donna  
West  
Tot. 59.18 Ac.

OR7-574  
42.18 Ac.  
*W 1/2 SW Pt.*

Michael &  
Jean Ricketts  
200-601  
Tot. 24.00 Ac.

18.00 Ac.  
*W 1/2 SW Pt.*

Perry Swain & Melinda Manyer  
214-264  
28.215 Ac.  
*W 1/2 SW Pt.*

124.402 Ac.  
*LOT 2 Pt. &  
E 1/2 NW*

190-547  
14.598 Ac.

Bethel United  
Methodist Church, etal

Golda Paxton  
143-489  
Tot. 207.582 Ac.

83.18 Ac.  
*E 1/2 SW Pt.*

W Pt. SEC. 7