

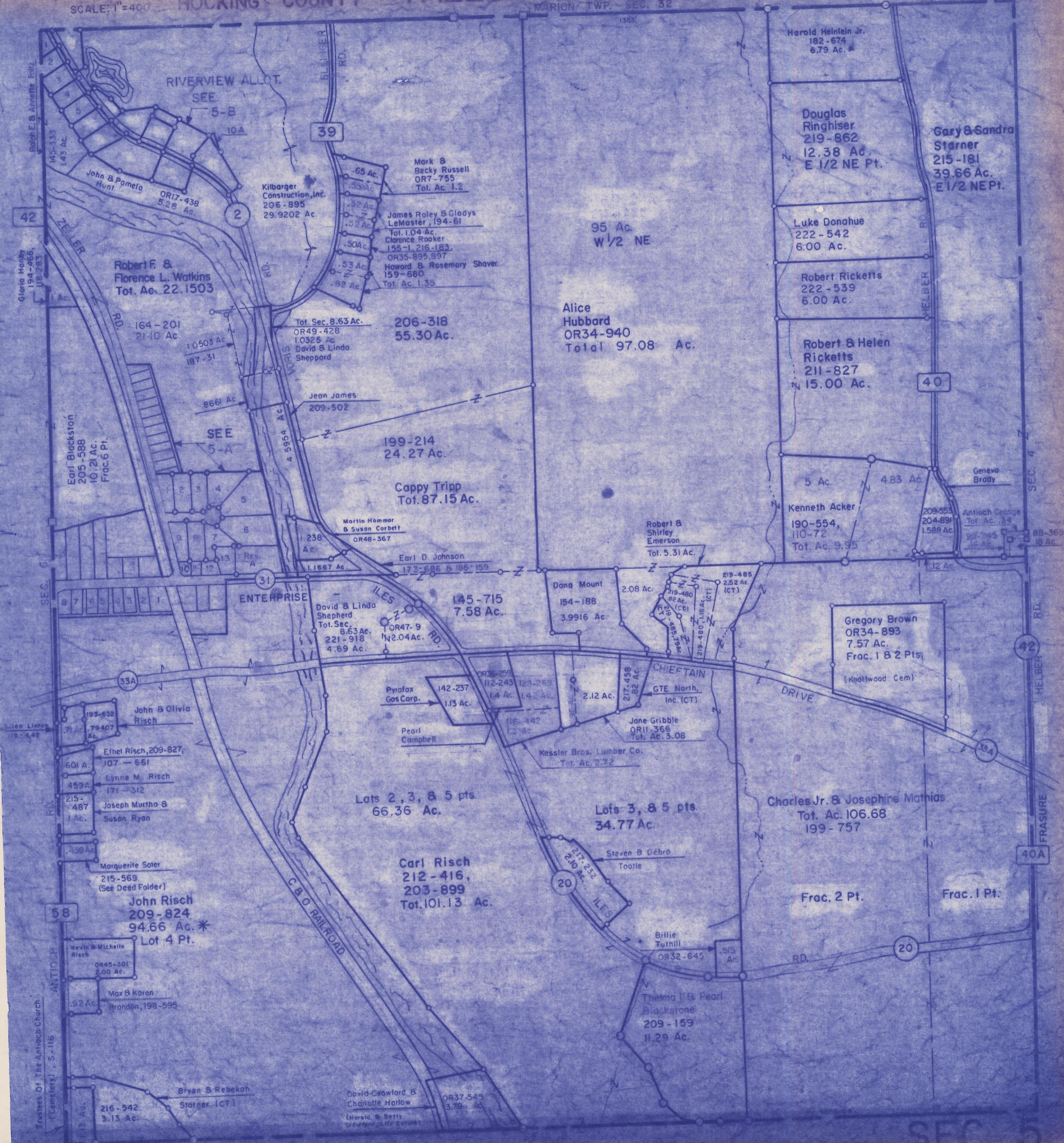
SCALE: 1"=400'

HOCKING COUNTY

FALLS TWP. SEC. 5 T14 R17

MARION TWP. SEC. 32

Sec. 33



RIVERVIEW ALLOT.
SEE 5-B

39

42

Robert F. &
Florence L. Watkins
Tot. Ac. 22.1503

Kilbarger
Construction, Inc.
206-895
29.9202 Ac.

Mark &
Becky Russell
OR7-755
Tot. Ac. 1.2

James Raley & Gladys
LeMaster, 194-61
Tot. 1.04 Ac.
Clarence Rooker
155-1, 216-183,
OR35-895, 897
Howard & Rosemary Shaver
159-680
Tot. Ac. 1.35

95 Ac.
W 1/2 NE

Harold Heinlein Jr.
182-674
6.79 Ac. *

Douglas
Ringhiser
219-862
12.38 Ac.
E 1/2 NE Pt.

Gary & Sandra
Storner
215-181
39.66 Ac.
E 1/2 NE Pt.

Luke Donahue
222-542
6.00 Ac.

Robert Ricketts
222-539
6.00 Ac.

Robert & Helen
Ricketts
211-827
N 15.00 Ac.

40

Earl Blackston
205-588
10.21 Ac.
Frac. 6 Pt.

164-201
2110 Ac.

1050 1/2 Ac.
187-31

SEE 5-A

Tot. Sec. 8.63 Ac.
OR49-428
1.0325 Ac.
David & Linda
Sheppard

206-318
55.30 Ac.

Jean James
209-502

199-214
24.27 Ac.

Cappy Tripp
Tot. 87.15 Ac.

Martin Hamner
& Susan Corbett
OR48-367

Earl D. Johnson
173-686 & 185-159

Robert &
Shirley
Emerson
Tot. 5.31 Ac.

5 Ac.
4.83 Ac.
Kenneth Acker
190-554,
110-72
Tot. Ac. 9.95

Geneva
Brady
209-553
204-591
1.588 Ac.

88-369
1.8 Ac.

ENTERPRISE

145-715
7.58 Ac.

David & Linda
Sheppard
Tot. Sec.
8.63 Ac.
221-918
4.69 Ac.

Dana Mount
154-188
3.9916 Ac.

2.08 Ac.
219-480
82 Ac. (CT)
219-480
1.184 Ac. (CT)
219-480
2.52 Ac. (CT)

Gregory Brown
OR34-893
7.57 Ac.
Frac. 1 & 2 Pts.
(Knollwood Cem)

Pyrofax
Gas Corp.
142-237
1.13 Ac.

Pearl
Campbell

116-442
1.3 Ac.

2.12 Ac.
217-458
82 Ac.

GTE North,
Inc. (CT)

Jane Gribble
OR11-366
Tot. Ac. 3.08

Kessler Bros. Lumber Co.
Tot. Ac. 2.72

Lots 2, 3, & 5 pts.
66.36 Ac.

Lots 3, & 5 pts.
34.77 Ac.

Charles Jr. & Josephine Mathias
Tot. Ac. 106.68
199-757

Carl Risch
212-416,
203-899
Tot. 101.13 Ac.

Steven B. Debro
Tootle

Frac. 2 Pt.

Frac. 1 Pt.

John Risch
209-824
94.66 Ac. *
Lot 4 Pt.

Kevin & Michelle
Risch
OR45-301
2.00 Ac.

Max & Karen
Brandon, 198-595

Billie
Tutthill
OR32-645
.515 Ac.

Thelma I & Pearl
Blackstone
209-159
11.29 Ac.

Bryan & Rebekah
Storner (CT)

David Crawford &
Charlotte Harlow
OR37-545
3.79 Ac.

SEC 5