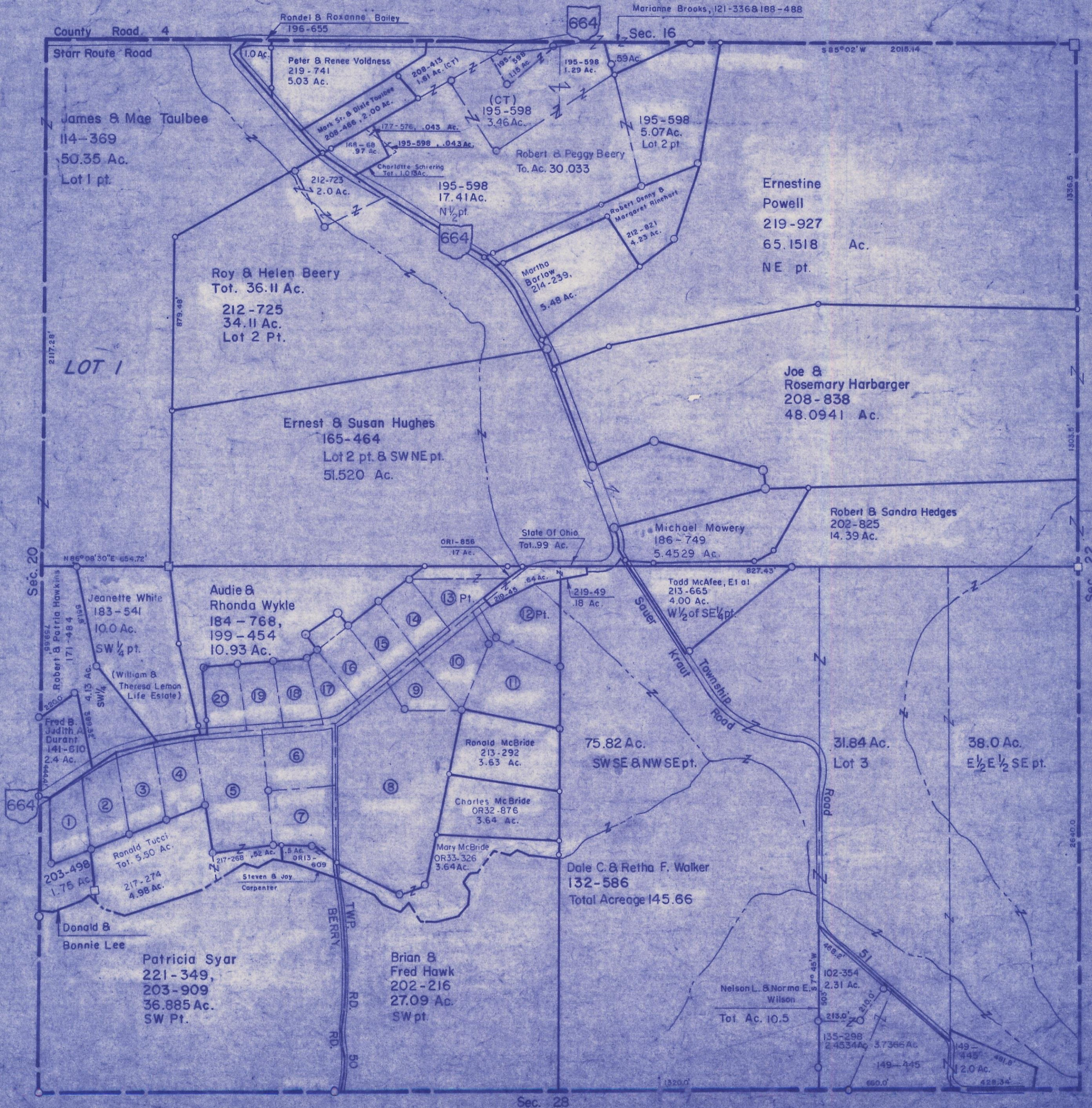


HOCKING COUNTY

Sec. 21 T14 R17

FALLS TWP.

Scale 1" = 400'



County Road 4

Starr Route Road

James & Mae Taulbee
114-369
50.35 Ac.
Lot 1 pt.

LOT 1

Roy & Helen Beery
Tot. 36.11 Ac.
212-725
34.11 Ac.
Lot 2 Pt.

Ernest & Susan Hughes
165-464
Lot 2 pt. & SWNE pt.
51.520 Ac.

Jeanette White
183-541
10.0 Ac.
SW 1/4 pt.

Audie & Rhonda Wykle
184-768,
199-454
10.93 Ac.

Fred B. Judith A. Durant
141-610
2.4 Ac.

Ronald Tucci
Tot. 5.50 Ac.
203-498
1.75 Ac.
217-274
4.98 Ac.

Donald & Bonnie Lee

Patricia Syar
221-349,
203-909
36.885 Ac.
SW Pt.

Brian & Fred Hawk
202-216
27.09 Ac.
SW pt.

Rondel & Roxanne Bailey
196-655

Peter & Renee Voldness
219-741
5.03 Ac.

Mork Sr. & Dixie Taulbee
208-486, 2.00 Ac.

Charlotte Schiering
Tot. 1.013 Ac.

195-598
17.41 Ac.
N 1/2 pt.

Robert & Peggy Beery
To. Ac. 30.033

Robert Denny & Margaret Rinehart
212-921
4.23 Ac.

Morpha Barlow
214-239,
5.48 Ac.

Ernestine Powell
219-927
65.1518 Ac.
NE pt.

Joe & Rosemary Harbarger
208-838
48.0941 Ac.

Robert & Sandra Hedges
202-825
14.39 Ac.

ORI-856
.17 Ac.

State Of Ohio
Tot. 99 Ac.

Michael Mowery
186-749
5.4529 Ac.

Todd McAfee, Et al
213-665
4.00 Ac.
W 1/2 of SE 1/4 pt.

75.82 Ac.
SWSE & NWSE pt.

Ronald McBride
213-292
3.63 Ac.

Charles McBride
OR32-876
3.64 Ac.

Mary McBride
OR33-326
3.64 Ac.

Dale C. & Retha F. Walker
132-586
Total Acreage 145.66

31.84 Ac.
Lot 3

38.0 Ac.
E 1/2 E 1/2 SE pt.

Nelson L. & Norma E. Wilson
Tot. Ac. 10.5

102-354
2.31 Ac.

135-298
2.4534 Ac.

149-445
3.7366 Ac.

149-445
2.0 Ac.

Sec. 28

SEC. 21