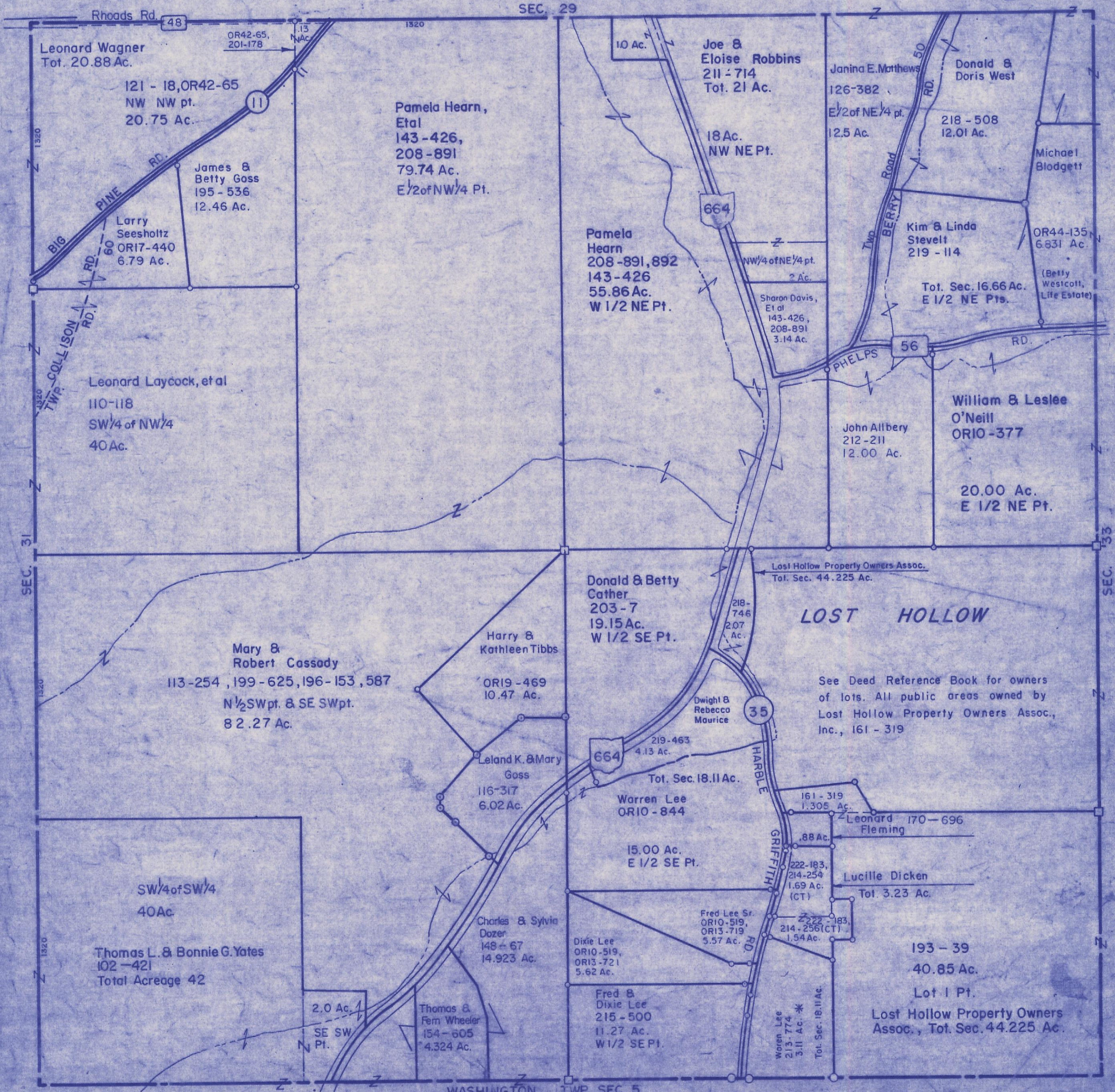


HOCKING COUNTY

Sec. 32 T14 R17

FALLS TWP

Scale 1" = 400'



Leonard Wagner
Tot. 20.88 Ac.

121 - 18, OR42-65
NW NW pt.
20.75 Ac.

James &
Betty Goss
195 - 536
12.46 Ac.

Larry
Seesholtz
OR17-440
6.79 Ac.

Leonard Laycock, et al
110-118
SW 1/4 of NW 1/4
40 Ac.

Thomas L. & Bonnie G. Yates
102-421
Total Acreage 42

Pamela Hearn,
Et al
143-426,
208-891
79.74 Ac.
E 1/2 of NW 1/4 Pt.

Joe &
Eloise Robbins
211-714
Tot. 21 Ac.

Pamela
Hearn
208-891, 892
143-426
55.86 Ac.
W 1/2 NE Pt.

Janina E. Matthews
126-382
E 1/2 of NE 1/4 pt.
12.5 Ac.

Donald &
Doris West
218-508
12.01 Ac.

Kim & Linda
Stevelt
219-114

OR44-135
6.831 Ac.
(Betty
Westcott,
Life Estate)

Tot. Sec. 16.66 Ac.
E 1/2 NE Pts.

William & Leslee
O'Neill
OR10-377

20.00 Ac.
E 1/2 NE Pt.

Donald & Betty
Cather
203-7
19.15 Ac.
W 1/2 SE Pt.

Harry &
Kathleen Tibbs

OR19-469
10.47 Ac.

Mary &
Robert Cassidy
113-254, 199-625, 196-153, 587
N 1/2 SW pt. & SE SW pt.
82.27 Ac.

Leland K. & Mary
Goss
116-317
6.02 Ac.

Warren Lee
OR10-844

15.00 Ac.
E 1/2 SE Pt.

Charles & Sylvia
Dozer
148-67
14.923 Ac.

Dixie Lee
OR10-519,
OR13-721
5.62 Ac.

Fred &
Dixie Lee
215-500
11.27 Ac.
W 1/2 SE Pt.

Fred Lee Sr.
OR10-519,
OR13-719
5.57 Ac.

Thomas &
Fern Wheeler
154-605
4.324 Ac.

Lucille Dicken
222-183,
214-254
1.69 Ac.
(CT)

Leonard Fleming
170-696
.88 Ac.

Tot. 3.23 Ac.

193-39
40.85 Ac.

Lot 1 Pt.
Lost Hollow Property Owners
Assoc., Tot. Sec. 44.225 Ac.

Warren Lee
OR10-519,
OR13-719
5.57 Ac.

222-183,
214-254
1.69 Ac.
(CT)

214-256 (CT)
1.54 Ac.

Warren Lee
213-774
3.11 Ac. *

Tot. Sec. 18.11 Ac.

Lost Hollow Property Owners Assoc.
Tot. Sec. 44.225 Ac.

See Deed Reference Book for owners
of lots. All public areas owned by
Lost Hollow Property Owners Assoc.,
Inc., 161-319

LOST HOLLOW

WASHINGTON TWP. SEC. 5

SEC. 32