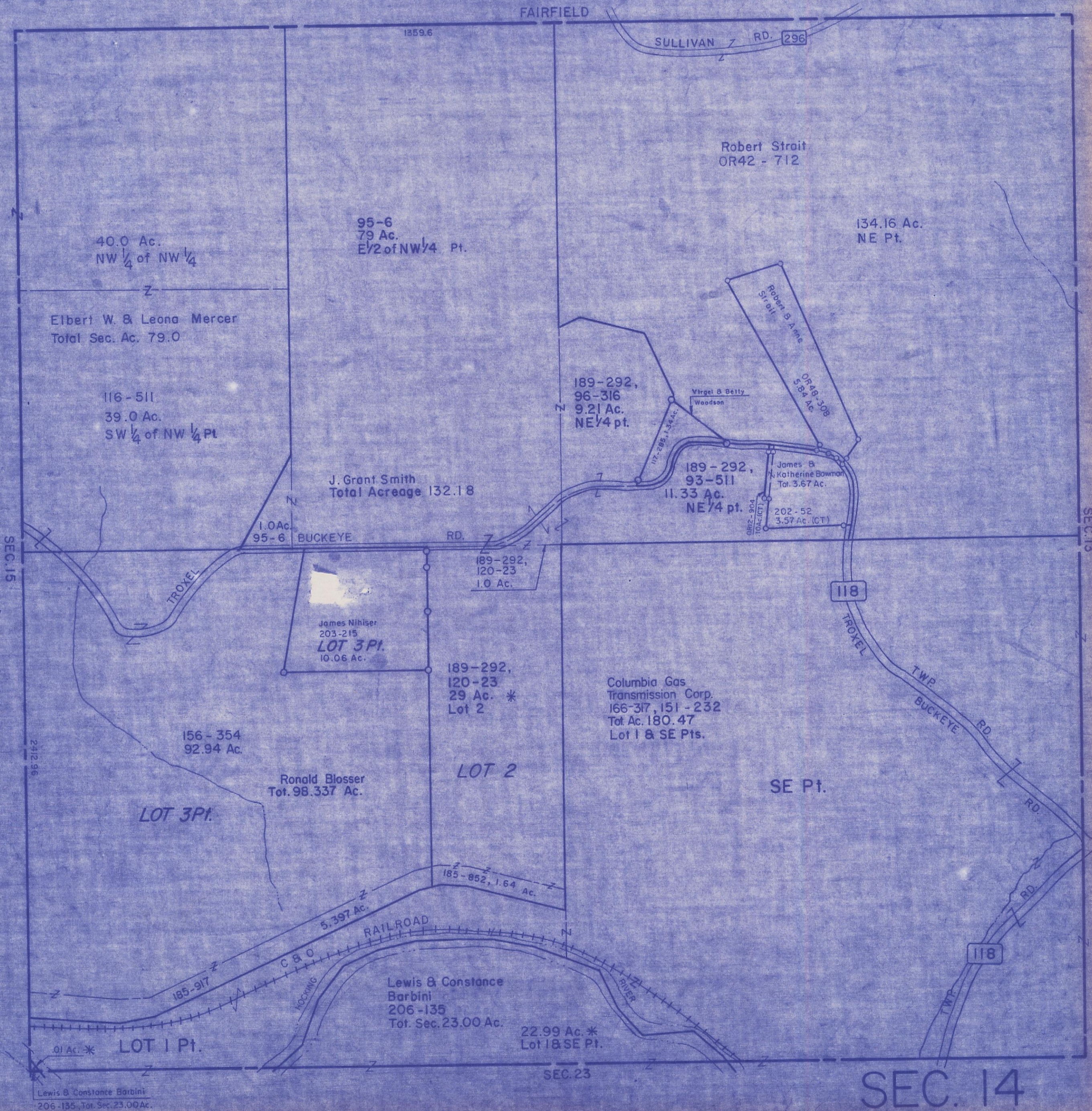


HOCKING COUNTY

Sec 14 T 13 R 18

GOOD HOPE TWP.

Scale: 1"=400'



40.0 Ac.
NW 1/4 of NW 1/4

Elbert W. & Leona Mercer
Total Sec. Ac. 79.0

116-511
39.0 Ac.
SW 1/4 of NW 1/4 Pt.

95-6
79 Ac.
E 1/2 of NW 1/4 Pt.

Robert Strait
OR42 - 712

134.16 Ac.
NE Pt.

189-292,
96-316
9.21 Ac.
NE 1/4 pt.

Virgel & Betty
Woodson

Robert B. A. Pitt
OR48-308
5.84 Ac.

J. Grant Smith
Total Acreage 132.18

189-292,
93-511
11.33 Ac.
NE 1/4 pt.

James &
Katherine Bowman
Tot. 3.67 Ac.

202-52
3.57 Ac. (CT)

1.0 Ac.
95-6

BUCKEYE RD.

189-292,
120-23
1.0 Ac.

James Nihiser
203-215
LOT 3 Pt.
10.06 Ac.

189-292,
120-23
29 Ac. *
Lot 2

Columbia Gas
Transmission Corp.
166-317, 151-232
Tot. Ac. 180.47
Lot 1 & SE Pts.

156-354
92.94 Ac.

Ronald Blosser
Tot. 98.337 Ac.

LOT 2

SE Pt.

LOT 3 Pt.

185-852, 1.64 Ac.

RAILROAD

Lewis & Constance
Barbini
206-135
Tot. Sec. 23.00 Ac.

22.99 Ac. *
Lot 1 & SE Pt.

01 Ac. *
LOT 1 Pt.

Lewis & Constance Barbini
206-135, Tot. Sec. 23.00 Ac.

SEC. 14