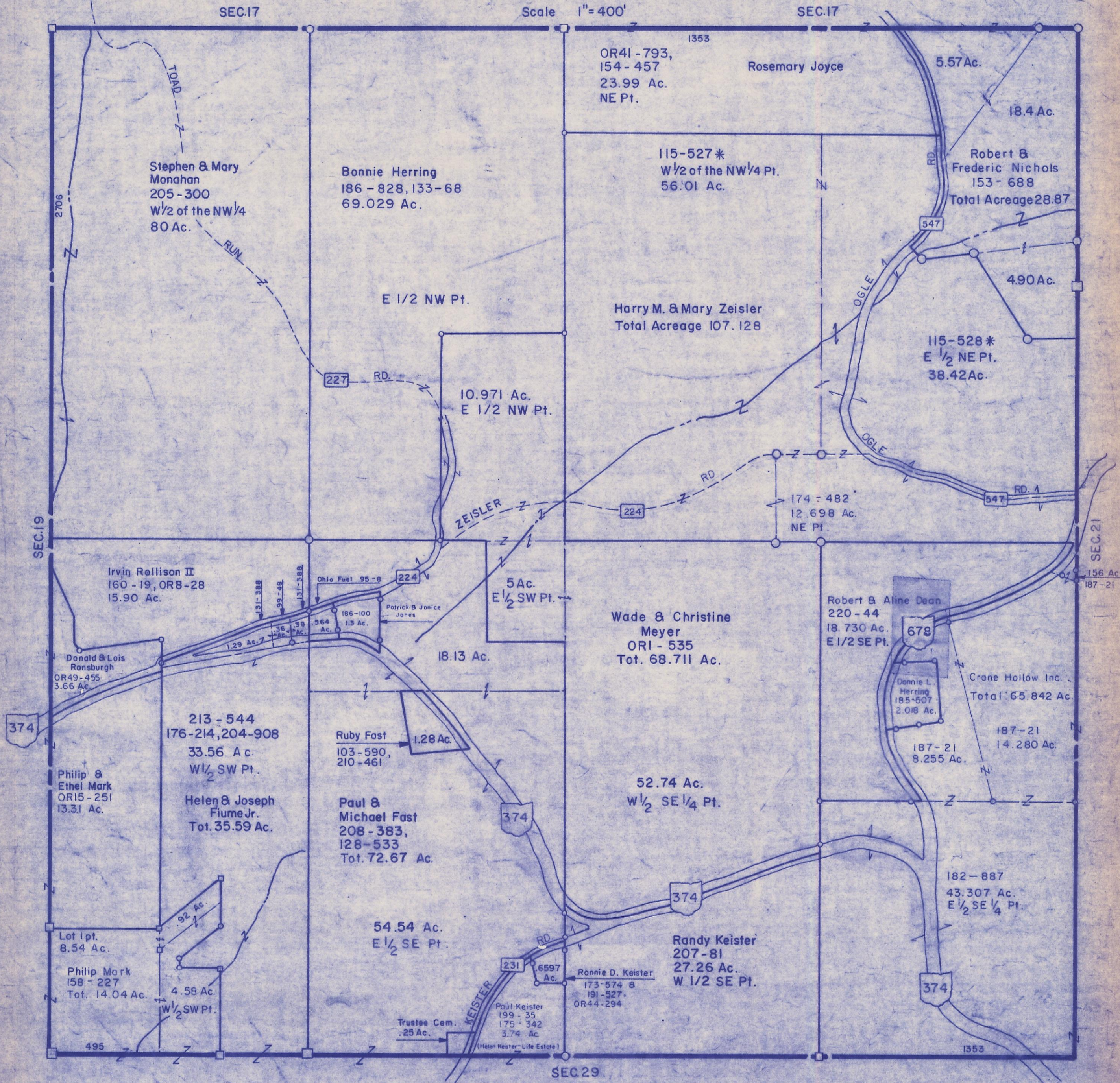


HOCKING COUNTY

Sec. 20 T 12 R 18

LAUREL TWP

Scale 1" = 400'



Stephen & Mary Monahan
205-300
W 1/2 of the NW 1/4
80 Ac.

Bonnie Herring
186-828, 133-68
69.029 Ac.

OR41-793,
154-457
23.99 Ac.
NE Pt.

Rosemary Joyce

5.57 Ac.

18.4 Ac.

115-527 *
W 1/2 of the NW 1/4 Pt.
56.01 Ac.

Robert & Frederic Nichols
153-688
Total Acreage 28.87

Harry M. & Mary Zeisler
Total Acreage 107.128

115-528 *
E 1/2 NE Pt.
38.42 Ac.

10.971 Ac.
E 1/2 NW Pt.

Irvin Rollison II
160-19, OR8-28
15.90 Ac.

Wade & Christine Meyer
ORI-535
Tot. 68.711 Ac.

Robert & Aline Dean
220-44
18.730 Ac.
E 1/2 SE Pt.

Crane Hollow Inc.
Total 65.842 Ac.

213-544
176-214, 204-908
33.56 Ac.
W 1/2 SW Pt.

Ruby Fast
103-590,
210-461
1.28 Ac.

Paul & Michael Fast
208-383,
128-533
Tot. 72.67 Ac.

52.74 Ac.
W 1/2 SE 1/4 Pt.

187-21
8.255 Ac.

187-21
14.280 Ac.

Philip & Ethel Mark
ORI5-251
13.31 Ac.

Helen & Joseph Fiume Jr.
Tot. 35.59 Ac.

54.54 Ac.
E 1/2 SE Pt.

Randy Keister
207-81
27.26 Ac.
W 1/2 SE Pt.

182-887
43.307 Ac.
E 1/2 SE 1/4 Pt.

Lot 1 pt.
8.54 Ac.

Philip Mark
158-227
Tot. 14.04 Ac.

Trustee Cem.
.25 Ac.

Paul Keister
199-35
175-342
3.74 Ac.
(Helen Keister - Life Estate)

Ronnie D. Keister
173-574 &
191-527,
OR44-294
6.597 Ac.

SEC. 20