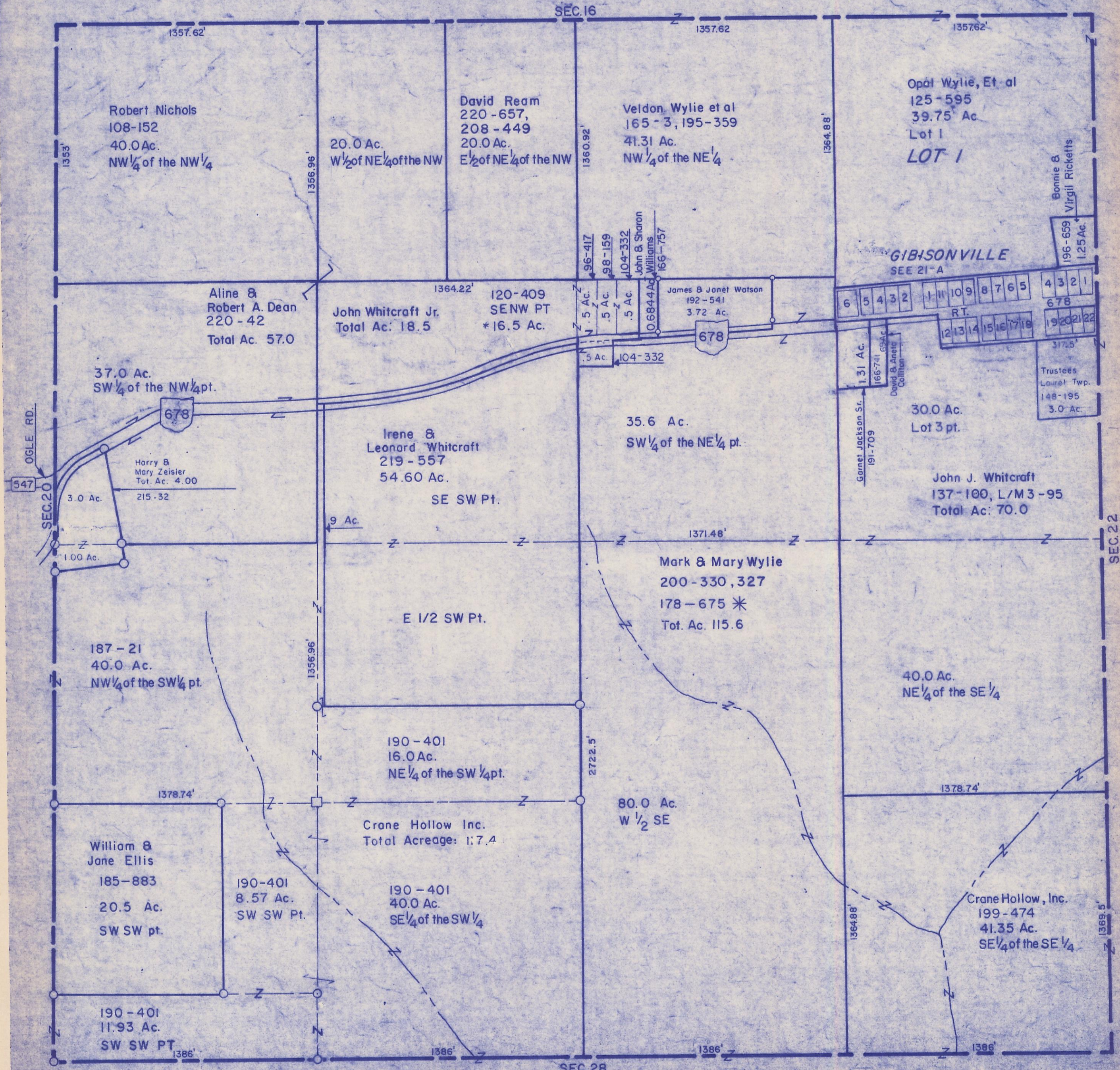


HOCKING COUNTY
LAUREL TWP.
T.12 R.18
SEC.21



Robert Nichols
108-152
40.0 Ac.
NW 1/4 of the NW 1/4

20.0 Ac.
W 1/2 of NE 1/4 of the NW

David Ream
220-657,
208-449
20.0 Ac.
E 1/2 of NE 1/4 of the NW

Veldon Wylie et al
165-3, 195-359
41.31 Ac.
NW 1/4 of the NE 1/4

Opal Wylie, Et al
125-595
39.75 Ac.
Lot 1
LOT 1

Aline &
Robert A. Dean
220-42
Total Ac. 57.0

John Whitcraft Jr.
Total Ac. 18.5

120-409
SE NW PT
*16.5 Ac.

James & Janet Watson
192-541
3.72 Ac.



37.0 Ac.
SW 1/4 of the NW 1/4 pt.

Harry &
Mary Zeisler
Tot. Ac. 4.00

Irene &
Leonard Whitcraft
219-557
54.60 Ac.
SE SW Pt.

35.6 Ac.
SW 1/4 of the NE 1/4 pt.

30.0 Ac.
Lot 3 pt.

John J. Whitcraft
137-100, L/M 3-95
Total Ac. 70.0

187-21
40.0 Ac.
NW 1/4 of the SW 1/4 pt.

E 1/2 SW Pt.

Mark & Mary Wylie
200-330, 327
178-675 *
Tot. Ac. 115.6

40.0 Ac.
NE 1/4 of the SE 1/4

190-401
16.0 Ac.
NE 1/4 of the SW 1/4 pt.

80.0 Ac.
W 1/2 SE

William &
Jane Ellis
185-883
20.5 Ac.
SW SW pt.

190-401
8.57 Ac.
SW SW Pt.

190-401
40.0 Ac.
SE 1/4 of the SW 1/4

Crane Hollow Inc.
Total Acreage: 117.4

Crane Hollow, Inc.
199-474
41.35 Ac.
SE 1/4 of the SE 1/4

190-401
11.93 Ac.
SW SW PT

SEC.21