

HOCKING COUNTY

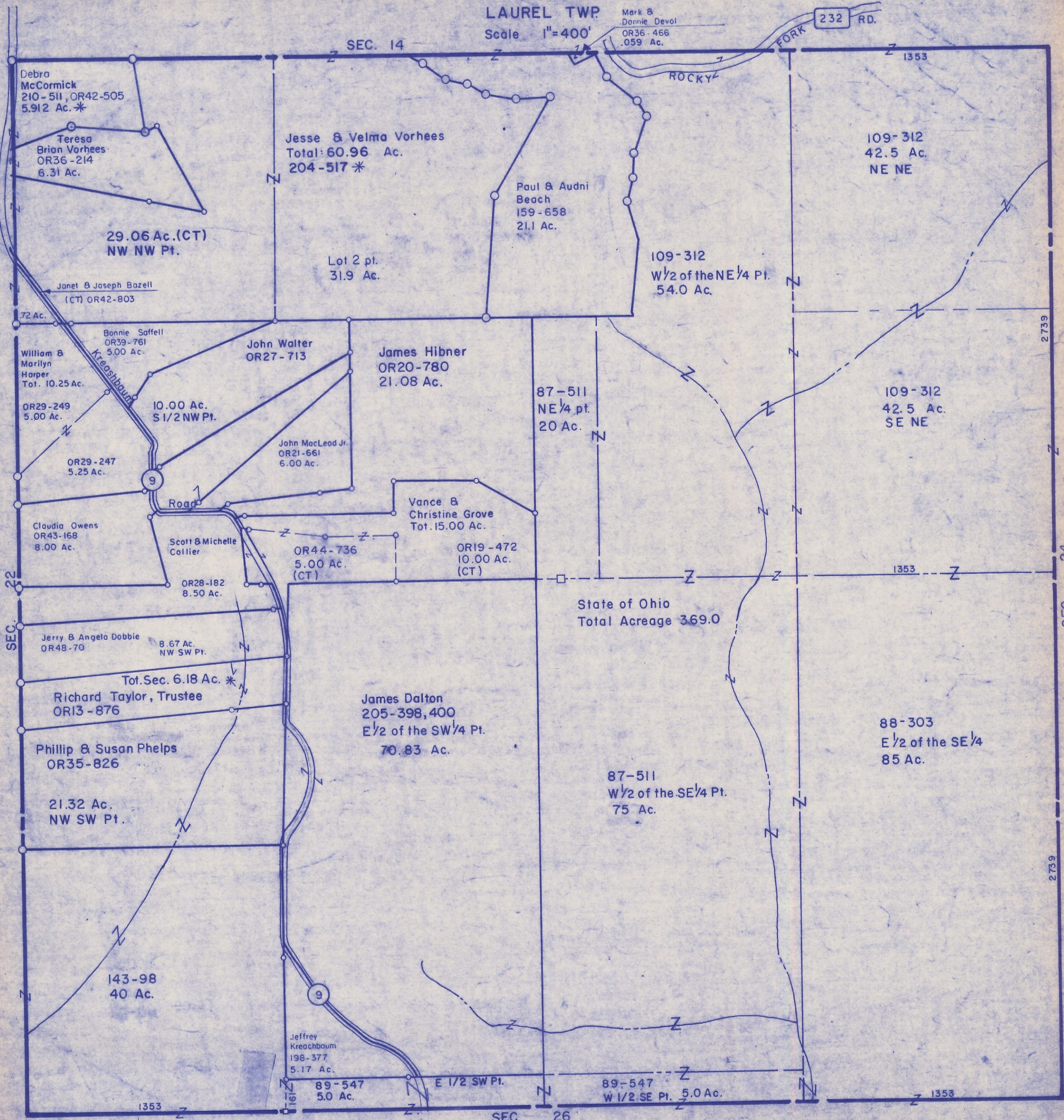
Sec. 23 T12 R 18

LAUREL TWP.

Scale 1"=400'

Mark & Dannie Devo
OR36-466
.059 Ac.

232 RD.



Debro McCormick
210-511, OR42-505
5.912 Ac. *

Teresa Brian Vorhees
OR36-214
6.31 Ac.

Jesse & Velma Vorhees
Total: 60.96 Ac.
204-517 *

Paul & Audni Beach
159-658
21.1 Ac.

109-312
42.5 Ac.
NE NE

29.06 Ac. (CT)
NW NW Pt.

Lot 2 pt.
31.9 Ac.

109-312
W 1/2 of the NE 1/4 Pt.
54.0 Ac.

Janet & Joseph Bazell
(CT) OR42-803

.72 Ac.

Bonnie Saffell
OR39-761
5.00 Ac.

John Walter
OR27-713

James Hibner
OR20-780
21.08 Ac.

87-511
NE 1/4 pt.
20 Ac.

109-312
42.5 Ac.
SE NE

William & Marilyn Harper
Tot. 10.25 Ac.
OR29-249
5.00 Ac.

10.00 Ac.
S 1/2 NW Pt.

John MacLeod Jr.
OR21-661
6.00 Ac.

Vance & Christine Grove
Tot. 15.00 Ac.

Claudia Owens
OR43-168
8.00 Ac.

Scott & Michelle Collier

OR44-736
5.00 Ac.
(CT)

OR19-472
10.00 Ac.
(CT)

State of Ohio
Total Acreage 369.0

Jerry & Angela Dobbie
OR48-70

8.67 Ac.
NW SW Pt.

Tot. Sec. 6.18 Ac. *
Richard Taylor, Trustee
ORI3-876

James Dalton
205-398,400
E 1/2 of the SW 1/4 Pt.
70.83 Ac.

87-511
W 1/2 of the SE 1/4 Pt.
75 Ac.

88-303
E 1/2 of the SE 1/4
85 Ac.

Phillip & Susan Phelps
OR35-826

21.32 Ac.
NW SW Pt.

143-98
40 Ac.

Jeffrey Kreachbaum
198-377
5.17 Ac.

89-547
5.0 Ac.

E 1/2 SW Pt.

89-547
W 1/2 SE Pt. 5.0 Ac.

SEC. 23