

HOCKING COUNTY

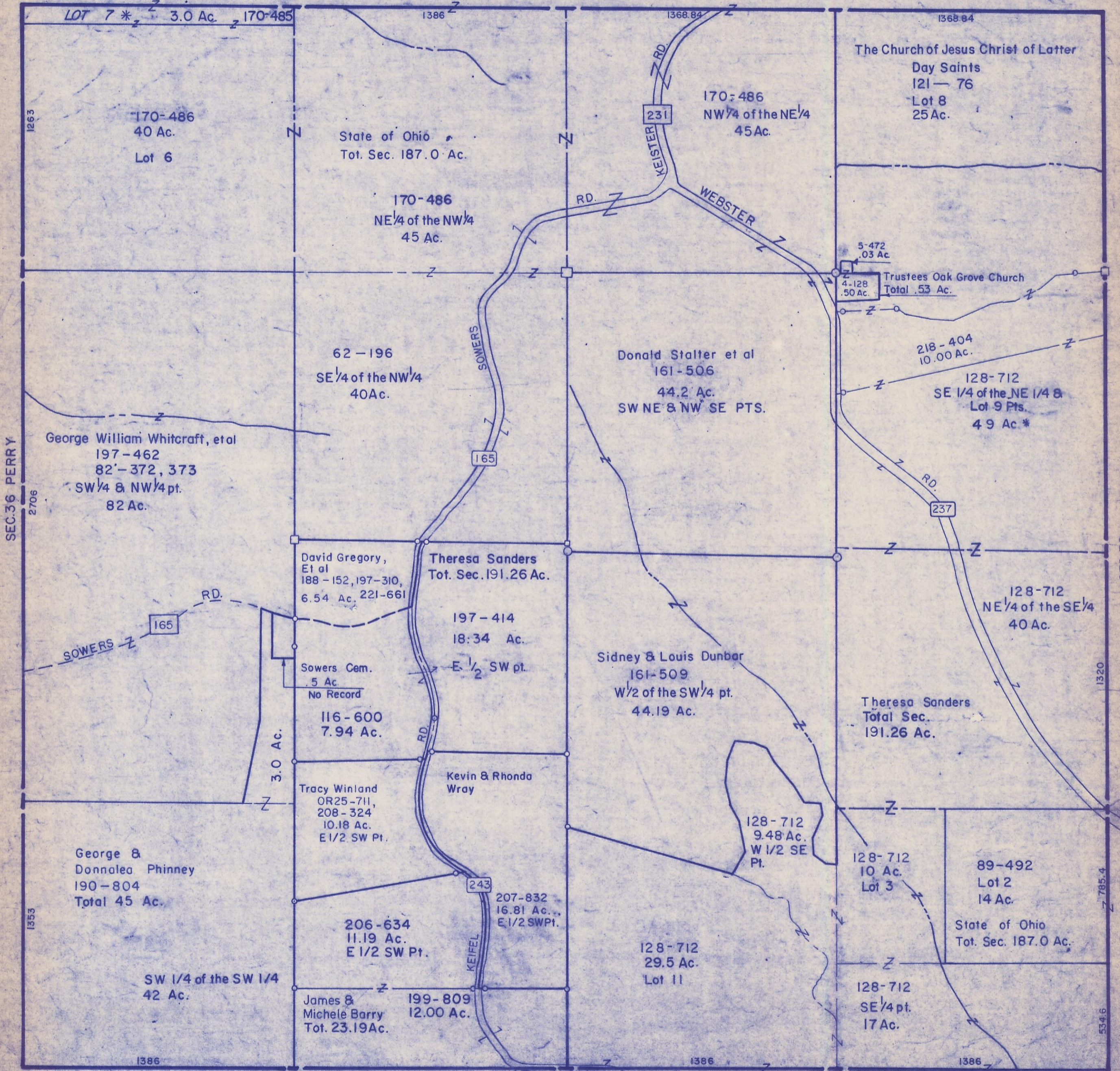
Sec. 31 T12 R 18

LAUREL TWP

Scale 1"=400'

SEC. 30

SEC. 30



LOT 7 * 3.0 Ac. 170-485

170-486
40 Ac.
Lot 6

State of Ohio
Tot. Sec. 187.0 Ac.

170-486
NE 1/4 of the NW 1/4
45 Ac.

170-486
NW 1/4 of the NE 1/4
45 Ac.

The Church of Jesus Christ of Latter
Day Saints
121-76
Lot 8
25 Ac.

62-196
SE 1/4 of the NW 1/4
40 Ac.

Donald Stalter et al
161-506
44.2 Ac.
SW NE & NW SE PTS.

Trustees Oak Grove Church
Total .53 Ac.

218-404
10.00 Ac.

128-712
SE 1/4 of the NE 1/4 &
Lot 9 Pts.
4.9 Ac *

George William Whitcraft, et al
197-462
82'-372, 373
SW 1/4 & NW 1/4 pt.
82 Ac.

David Gregory,
Et al
188-152, 197-310,
6.54 Ac. 221-661

Theresa Sanders
Tot. Sec. 191.26 Ac.

197-414
18.34 Ac.

Sidney & Louis Dunbar
161-509
W 1/2 of the SW 1/4 pt.
44.19 Ac.

128-712
NE 1/4 of the SE 1/4
40 Ac.

SOWERS RD. 165

Sowers Cem.
.5 Ac.
No Record

116-600
7.94 Ac.

Kevin & Rhonda
Wray

Theresa Sanders
Total Sec.
191.26 Ac.

Tracy Winland
OR25-711,
208-324
10.18 Ac.
E 1/2 SW Pt.

128-712
9.48 Ac.
W 1/2 SE
Pt.

128-712
10 Ac.
Lot 3

89-492
Lot 2
14 Ac.

George &
Donalea Phinney
190-804
Total 45 Ac.

206-634
11.19 Ac.
E 1/2 SW Pt.

207-832
16.81 Ac.
E 1/2 SW Pt.

128-712
29.5 Ac.
Lot 11

State of Ohio
Tot. Sec. 187.0 Ac.

SW 1/4 of the SW 1/4
42 Ac.

James &
Michele Barry
Tot. 23.19 Ac.

199-809
12.00 Ac.

128-712
SE 1/4 pt.
17 Ac.

SEC. 6 BENTON

SEC. 31