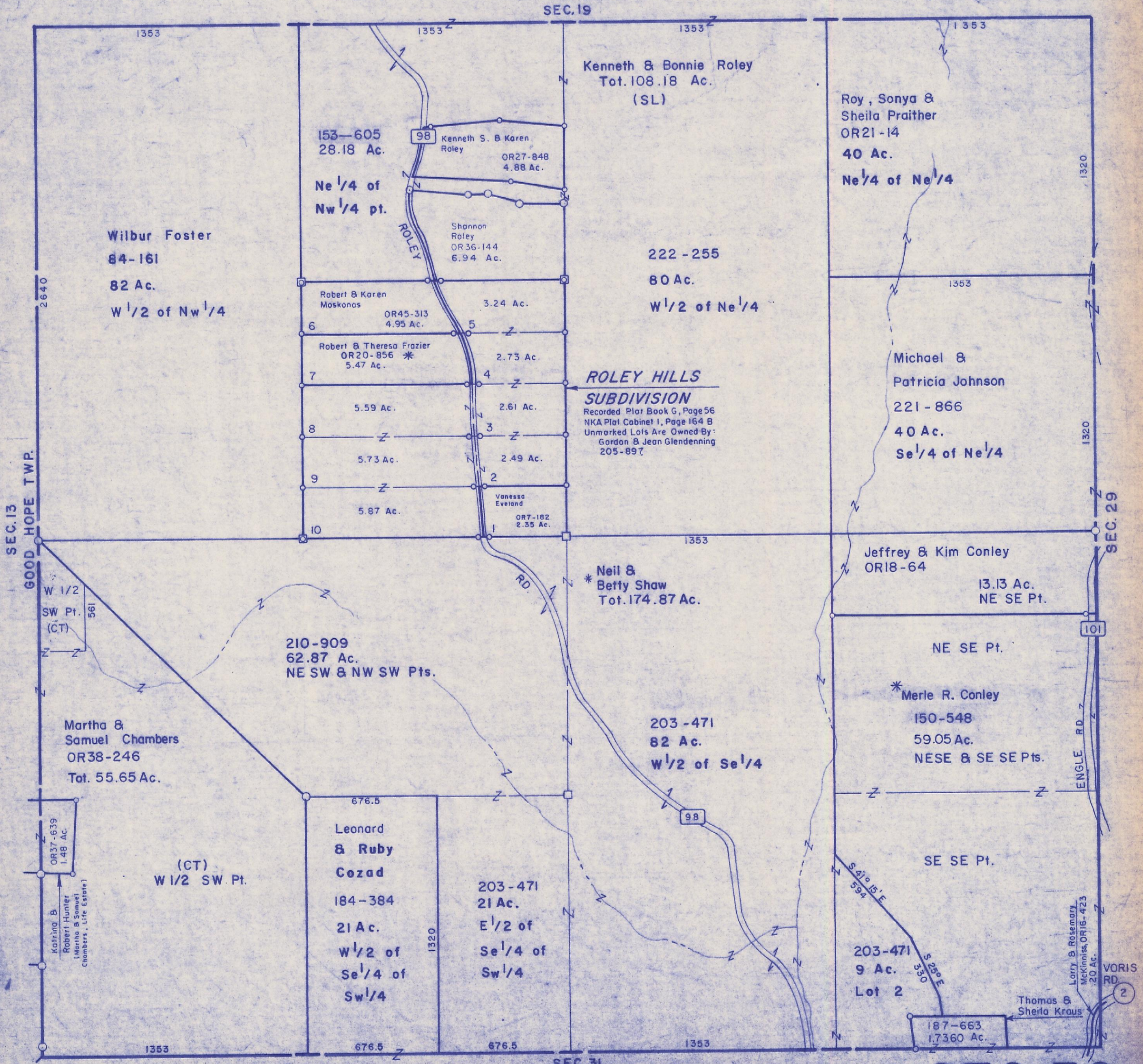


HOCKING COUNTY

Sec. 30 T.15 R.17

MARION TWP.

Scale 1" = 400'



SEC. 19

SEC. 31

SEC. 13
GOOD HOPE TWP.

SEC. 29

SEC 30

Kenneth & Bonnie Roley
Tot. 108.18 Ac.
(SL)

Roy, Sonya & Sheila Praither
OR21-14
40 Ac.
Ne 1/4 of Ne 1/4

Wilbur Foster
84-161
82 Ac.
W 1/2 of Nw 1/4

153-605
28.18 Ac.
Ne 1/4 of Nw 1/4 pt.

98
Kenneth S. & Karen Roley
OR27-848
4.88 Ac.

Shannon Roley
OR36-144
6.94 Ac.

222-255
80 Ac.
W 1/2 of Ne 1/4

Robert & Karen Moskonos
OR45-313
4.95 Ac.
3.24 Ac.

Robert & Theresa Frazier
OR20-856 *
5.47 Ac.
2.73 Ac.

ROLEY HILLS SUBDIVISION
Recorded Plat Book G, Page 56
NKA Plat Cabinet I, Page 164 B
Unmarked Lots Are Owned By:
Gordon & Jean Glendenning
205-897

Michael & Patricia Johnson
221-866
40 Ac.
Se 1/4 of Ne 1/4

5.59 Ac. 2.61 Ac.

5.73 Ac. 2.49 Ac.

5.87 Ac. 2.35 Ac.
Vanessa Eveland
OR7-182

* Neil & Betty Shaw
Tot. 174.87 Ac.

Jeffrey & Kim Conley
OR18-64
13.13 Ac.
NE SE Pt.

W 1/2 SW Pt. (CT)
561

210-909
62.87 Ac.
NE SW & NW SW Pts.

Martha & Samuel Chambers
OR38-246
Tot. 55.65 Ac.

203-471
82 Ac.
W 1/2 of Se 1/4

* Merle R. Conley
150-548
59.05 Ac.
NESE & SE SE Pts.

OR37-639
1.48 Ac.
Kathrine B. Robert Hunter
(Martha & Samuel Chambers, Life Estate)

(CT)
W 1/2 SW Pt.

Leonard & Ruby Cozad
184-384
21 Ac.
W 1/2 of Se 1/4 of Sw 1/4

203-471
21 Ac.
E 1/2 of Se 1/4 of Sw 1/4

203-471
9 Ac.
Lot 2

187-663
1,736.0 Ac.

Thomas & Sheila Kraus

Lorry & Rosemary McKinniss, OR16-423
.20 Ac.

VORIS RD. 2