

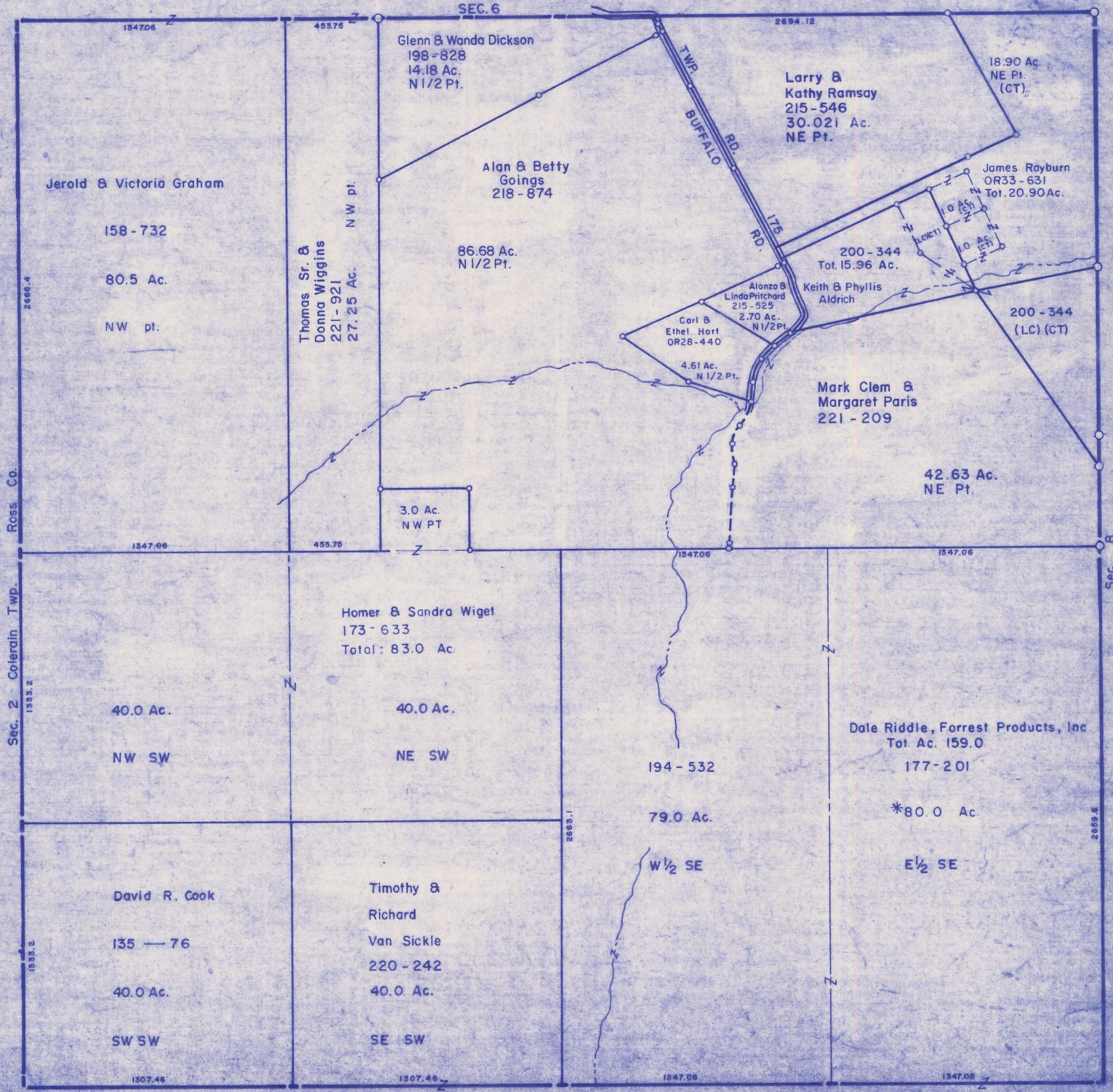
HOCKING COUNTY

Sec. 7 T11 R19

SALT CREEK TWP.

Scale 1" = 400'

SEC. 6



Jerold & Victoria Graham
158 - 732
80.5 Ac.
NW pt.

Thomas Sr. &
Donna Wiggins
221 - 921
27.25 Ac.
NW pt.

Glenn & Wanda Dickson
198 - 828
14.18 Ac.
N 1/2 Pt.

Alan & Betty
Goings
218 - 874
86.68 Ac.
N 1/2 Pt.

Larry &
Kathy Ramsay
215 - 546
30.021 Ac.
NE Pt.

18.90 Ac.
NE Pt.
(CT)

James Rayburn
OR33 - 631
Tot. 20.90 Ac.

200 - 344
Tot. 15.96 Ac.

Alonzo &
Linda Pritchard
215 - 525
2.70 Ac.
N 1/2 Pt.

Keith & Phyllis
Aldrich

200 - 344
(LC) (CT)

Carl &
Ethel Hart
OR28 - 440
4.61 Ac.
N 1/2 Pt.

Mark Clem &
Margaret Paris
221 - 209
42.63 Ac.
NE Pt.

3.0 Ac.
NW PT

Homer & Sandra Wiget
173 - 633
Total: 83.0 Ac.

40.0 Ac.
NW SW

40.0 Ac.
NE SW

194 - 532

Dale Riddle, Forrest Products, Inc
Tot. Ac. 159.0
177 - 201

79.0 Ac.

*80.0 Ac.

David R. Cook

Timothy &
Richard

W 1/2 SE

E 1/2 SE

135 - 76

Van Sickle
220 - 242

40.0 Ac.

40.0 Ac.

SW SW

SE SW

1307.46

1307.46

1347.06

1347.06

SEC. 18

SEC. 7