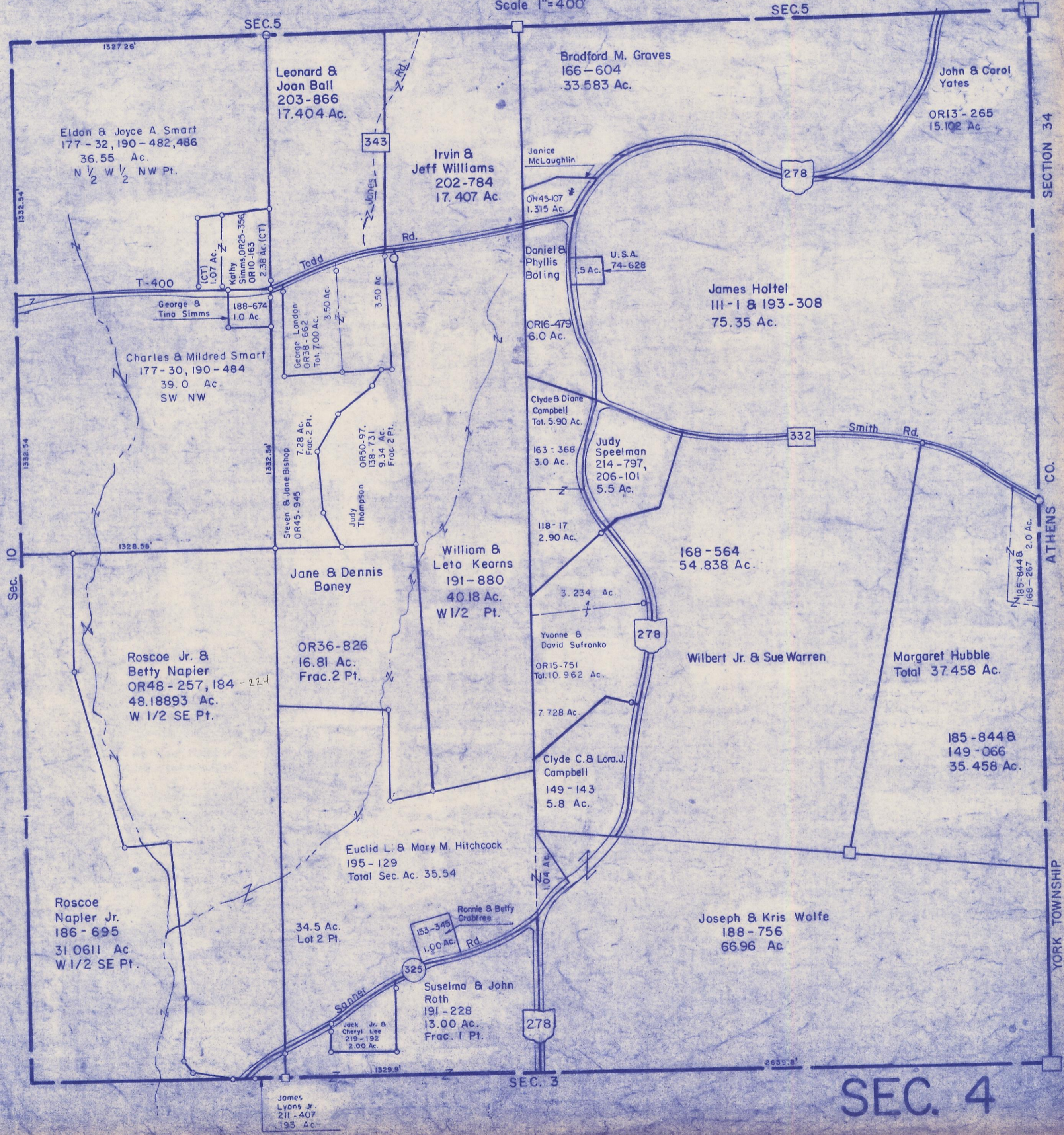


HOCKING COUNTY

Sec. 4 T 12 R 16

STARR TWP.

Scale 1"=400'



Eldon & Joyce A. Smart
177-32, 190-482, 486
36.55 Ac.
N 1/2 W 1/2 NW Pt.

Leonard & Joan Ball
203-866
17.404 Ac.

Bradford M. Graves
166-604
33.583 Ac.

John & Carol Yates
OR13-265
15.102 Ac.

Irvin & Jeff Williams
202-784
17.407 Ac.

Janice McLaughlin
OR45-107
1.315 Ac.

T-400
George & Tina Simms
188-674
1.0 Ac.

Daniel & Phyllis Boling
.5 Ac.

U.S.A.
74-628

James Holtel
III-1 & 193-308
75.35 Ac.

Charles & Mildred Smart
177-30, 190-484
39.0 Ac.
SW NW

George London
OR38-662
Tot. 7.00 Ac.

Clyde & Diane Campbell
Tot. 5.90 Ac.

Steven & Joane Bishop
OR45-945
7.28 Ac.
Frac. 2 Pt.

Judy Thompson
OR50-97,
138-731
9.34 Ac.
Frac. 2 Pt.

163-368
3.0 Ac.

Judy Speelman
214-797,
206-101
5.5 Ac.

118-17
2.90 Ac.

168-564
54.838 Ac.

Jane & Dennis Boney
OR36-826
16.81 Ac.
Frac. 2 Pt.

William & Leta Kearns
191-880
40.18 Ac.
W 1/2 Pt.

Yvonne & David Sufronko
OR15-751
Tot. 10.962 Ac.

Wilbert Jr. & Sue Warren

Margaret Hubble
Total 37.458 Ac.

Roscoe Jr. & Betty Napier
OR48-257, 184-224
48.18893 Ac.
W 1/2 SE Pt.

OR36-826
16.81 Ac.
Frac. 2 Pt.

7.728 Ac.

Clyde C. & Lora J. Campbell
149-143
5.8 Ac.

185-844 B
149-066
35.458 Ac.

Roscoe Napier Jr.
186-695
31.0611 Ac.
W 1/2 SE Pt.

34.5 Ac.
Lot 2 Pt.

Ronnie & Betty Crabtree

153-345
1.00 Ac.

Joseph & Kris Wolfe
188-756
66.96 Ac.

Suselma & John Roth
191-228
13.00 Ac.
Frac. 1 Pt.

Jack Jr. & Cheryl Lee
219-192
2.00 Ac.

James Lyons Jr.
211-407
193 Ac.

SEC. 4