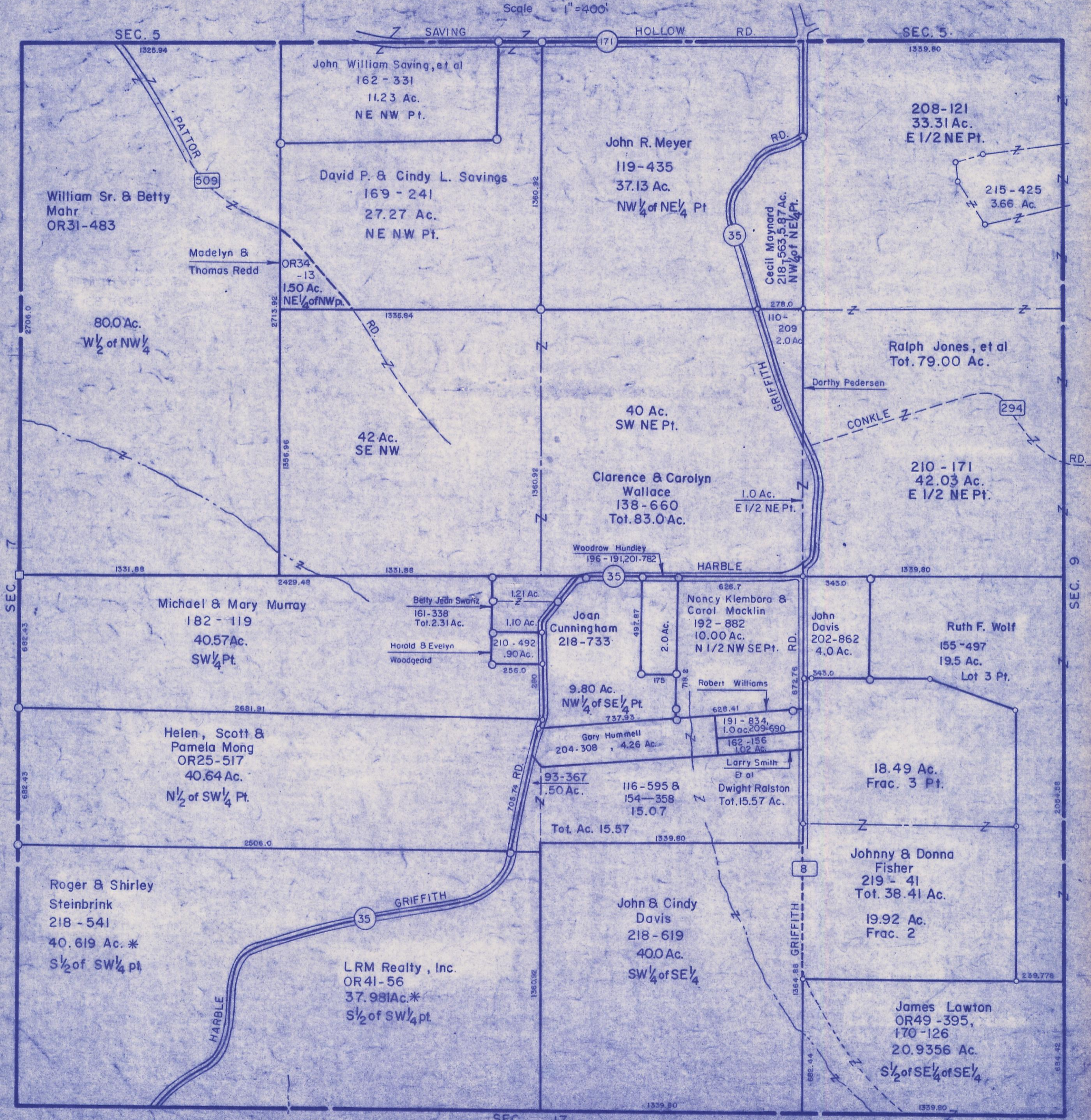


HOCKING COUNTY

Sec. 8 T13 R17

WASHINGTON TWP.

Scale 1" = 400'



SEC. 5 1325.94 1339.80

SAVING HOLLOW RD. (171)

John William Saving, et al  
162 - 331  
11.23 Ac.  
NE NW Pt.

John R. Meyer  
119 - 435  
37.13 Ac.  
NW 1/4 of NE 1/4 Pt.

208-121  
33.31 Ac.  
E 1/2 NE Pt.

William Sr. & Betty Mahr  
OR31-483

David P. & Cindy L. Savings  
169 - 241  
27.27 Ac.  
NE NW Pt.

215 - 425  
3.66 Ac.

Madelyn & Thomas Redd  
OR34 - 13  
1.50 Ac.  
NE 1/4 of NW p.

80.0 Ac.  
W 1/2 of NW 1/4

Cecil Maynard  
218-563, 587 Ac.  
NW 1/4 of NE 1/4 Pt.

42 Ac.  
SE NW

Ralph Jones, et al  
Tot. 79.00 Ac.

Dorothy Pedersen

40 Ac.  
SW NE Pt.

210 - 171  
42.03 Ac.  
E 1/2 NE Pt.

Clarence & Carolyn Wallace  
138 - 660  
Tot. 83.0 Ac.

1.0 Ac.  
E 1/2 NE Pt.

Woodrow Hundley  
196 - 191, 201 - 782

HARBLE

Michael & Mary Murray  
182 - 119  
40.57 Ac.  
SW 1/4 Pt.

Betty Jean Swartz  
161 - 338  
Tot. 2.31 Ac.

Joan Cunningham  
218 - 733

Nancy Klembara & Carol Macklin  
192 - 882  
10.00 Ac.  
N 1/2 NW SE Pt.

John Davis  
202 - 862  
4.0 Ac.

Ruth F. Wolf  
155 - 497  
19.5 Ac.  
Lot 3 Pt.

Harold & Evelyn Woodgard

9.80 Ac.  
NW 1/4 of SE 1/4 Pt.

Robert Williams

Gary Hummell  
204 - 308  
4.26 Ac.

191 - 834  
1.0 ac, 209 - 690

162 - 156  
1.02 Ac.

Larry Smith  
Et al

Dwight Ralston  
Tot. 15.57 Ac.

18.49 Ac.  
Frac. 3 Pt.

Helen, Scott & Pamela Mong  
OR25 - 517  
40.64 Ac.  
N 1/2 of SW 1/4 Pt.

93 - 367  
.50 Ac.

116 - 595 & 154 - 358  
15.07

Tot. Ac. 15.57

Roger & Shirley Steinbrink  
218 - 541  
40.619 Ac. \*  
S 1/2 of SW 1/4 pt

LRM Realty, Inc.  
OR41 - 56  
37.981 Ac. \*  
S 1/2 of SW 1/4 pt

John & Cindy Davis  
218 - 619  
40.0 Ac.  
SW 1/4 of SE 1/4

Johnny & Donna Fisher  
219 - 41  
Tot. 38.41 Ac.

19.92 Ac.  
Frac. 2

James Lawton  
OR49 - 395,  
170 - 126  
20.9356 Ac.  
S 1/2 of SE 1/4 of SE 1/4

SEC. 7 2706.0 2713.92 1356.96 1356.84 1360.92 1360.92 1331.88 2429.48 1331.88 1339.80 682.43 682.43 2691.91 2506.0 2506.0 682.44 682.44 239.778 2061.58 682.44 1339.80

SEC. 9 2061.58 682.44 1339.80

SEC. 8 1339.80

SEC. 8