

HOCKING COUNTY

Sec. 12 T13 R17

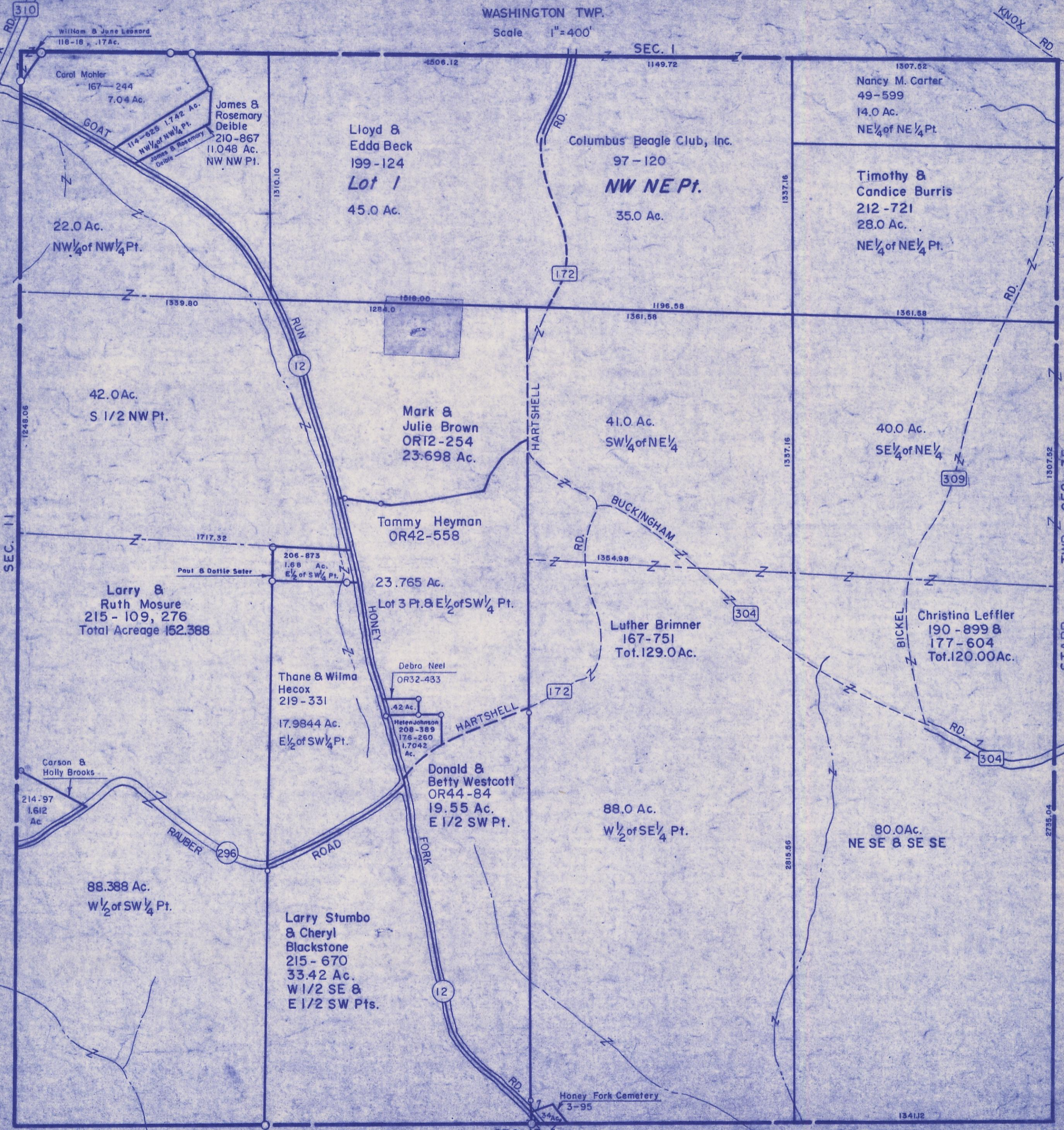
WASHINGTON TWP.

Scale 1"=400'

SEC. 1

310

SEC. 35
TWP. STARR



310
KNOX RD

William & June Leonard
118-18 .17 Ac.

Carol Mohler
167-244
7.04 Ac.

GOAT RUN

22.0 Ac.
NW 1/4 of NW 1/4 Pt.

42.0 Ac.
S 1/2 NW Pt.

Larry & Ruth Mosure
215-109, 276
Total Acreage 152.388

Carson & Holly Brooks
214-97
1.612 Ac.

88.388 Ac.
W 1/2 of SW 1/4 Pt.

Larry Stumbo & Cheryl Blackstone
215-670
33.42 Ac.
W 1/2 SE & E 1/2 SW Pts.

James & Rosemary Deible
210-867
11.048 Ac.
NW NW Pt.

Lloyd & Edda Beck
199-124
Lot 1
45.0 Ac.

1516.00
1284.0

Mark & Julie Brown
OR12-254
23.698 Ac.

Tammy Heyman
OR42-558
23.765 Ac.
Lot 3 Pt. & E 1/2 of SW 1/4 Pt.

Thane & Wilma Hecox
219-331
17.9844 Ac.
E 1/2 of SW 1/4 Pt.

Debra Neel
OR32-433
.42 Ac.

Helen Johnson
208-359
176-260
1.7042 Ac.

Donald & Betty Westcott
OR44-84
19.55 Ac.
E 1/2 SW Pt.

Columbus Beagle Club, Inc.
97-120
NW NE Pt.
35.0 Ac.

41.0 Ac.
SW 1/4 of NE 1/4

Luther Brimmer
167-751
Tot. 129.0 Ac.

88.0 Ac.
W 1/2 of SE 1/4 Pt.

Nancy M. Carter
49-599
14.0 Ac.
NE 1/4 of NE 1/4 Pt.

Timothy & Candice Burris
212-721
28.0 Ac.
NE 1/4 of NE 1/4 Pt.

40.0 Ac.
SE 1/4 of NE 1/4

Christina Leffler
190-899 & 177-604
Tot. 120.00 Ac.

80.0 Ac.
NE SE & SE SE

Honey Fork Cemetery
3-95
3.4 Ac.

SEC. 13

SEC. 12