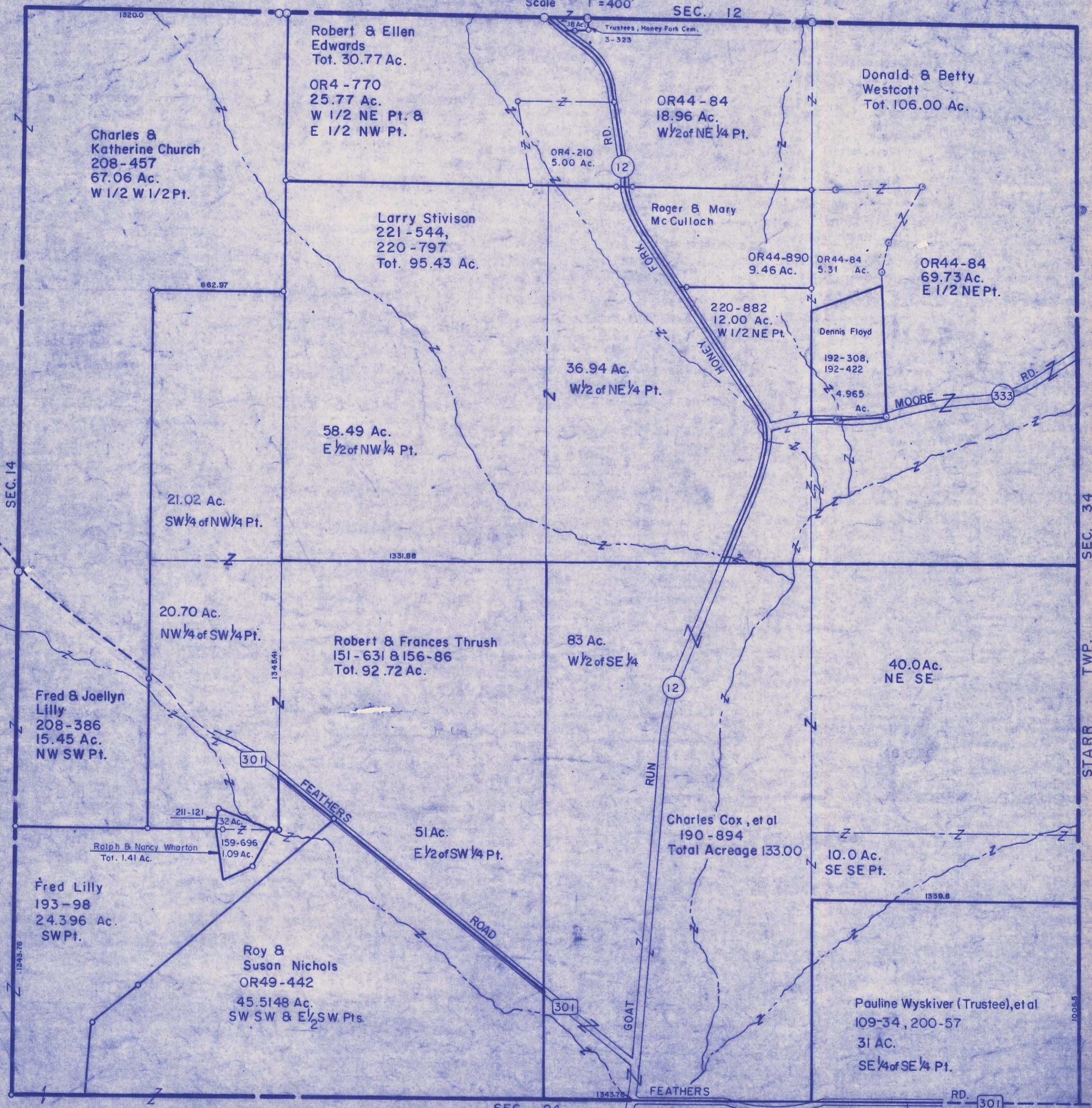


# HOCKING COUNTY

Sec. 13 T13 R17

WASHINGTON TWP.

Scale 1" = 400'



Charles & Katherine Church  
208-457  
67.06 Ac.  
W 1/2 W 1/2 Pt.

Robert & Ellen Edwards  
Tot. 30.77 Ac.  
OR4-770  
25.77 Ac.  
W 1/2 NE Pt. &  
E 1/2 NW Pt.

Larry Stivison  
221-544,  
220-797  
Tot. 95.43 Ac.

OR44-84  
18.96 Ac.  
W 1/2 of NE 1/4 Pt.

Donald & Betty Westcott  
Tot. 106.00 Ac.

Roger & Mary McCulloch

OR44-890  
9.46 Ac.

OR44-84  
5.31 Ac.

OR44-84  
69.73 Ac.  
E 1/2 NE Pt.

220-882  
12.00 Ac.  
W 1/2 NE Pt.

Dennis Floyd

192-308,  
192-422

4.965  
Ac.

36.94 Ac.  
W 1/2 of NE 1/4 Pt.

58.49 Ac.  
E 1/2 of NW 1/4 Pt.

21.02 Ac.  
SW 1/4 of NW 1/4 Pt.

20.70 Ac.  
NW 1/4 of SW 1/4 Pt.

Robert & Frances Thrush  
151-631 & 156-86  
Tot. 92.72 Ac.

83 Ac.  
W 1/2 of SE 1/4

40.0 Ac.  
NE SE

Fred & Joellyn Lilly  
208-386  
15.45 Ac.  
NW SW Pt.

211-121

32 Ac.

159-696  
1.09 Ac.

Ralph & Nancy Wharton  
Tot. 1.41 Ac.

51 Ac.  
E 1/2 of SW 1/4 Pt.

Charles Cox, et al  
190-894  
Total Acreage 133.00

10.0 Ac.  
SE SE Pt.

Fred Lilly  
193-98  
24.396 Ac.  
SW Pt.

Roy & Susan Nichols  
OR49-442  
45.5148 Ac.  
SW SW & E 1/2 SW Pts.

Pauline Wyskiver (Trustee), et al  
109-34, 200-57  
31 AC.  
SE 1/4 of SE 1/4 Pt.

# SEC. 13

SEC. 24

SEC. 34

TWP.

STARR

ANDERSON RD.  
T-207