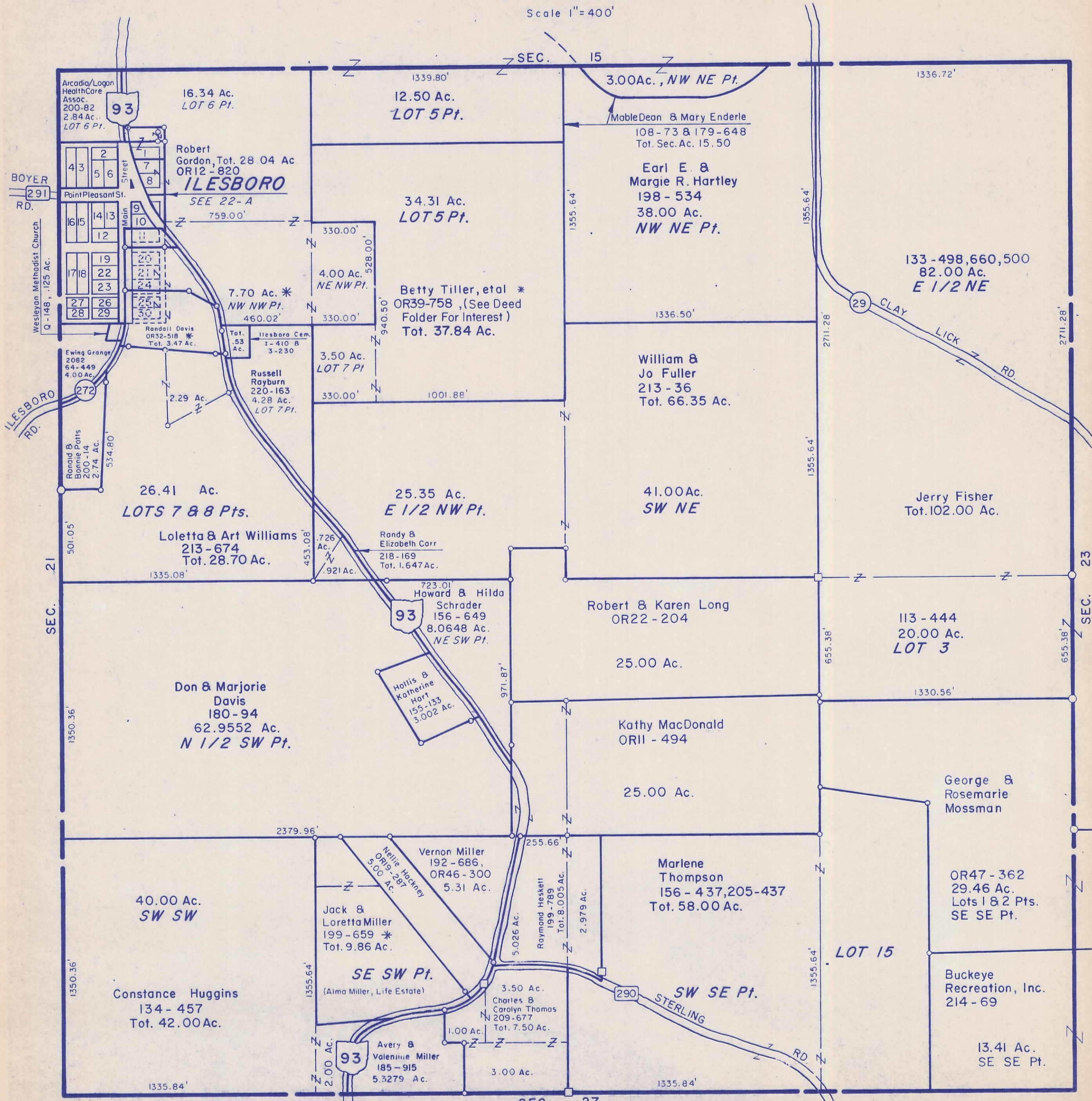


HOCKING COUNTY

WASHINGTON TWP.

SEC. 22 T 13 R 17

Scale 1"=400'



Arcadia/Logan HealthCare Assoc. 200-82 2.84 Ac. LOT 6 Pt.

16.34 Ac. LOT 6 Pt.

12.50 Ac. LOT 5 Pt.

3.00 Ac., NW NE Pt.
Mable Dean & Mary Enderle
108-73 & 179-648
Tot. Sec. Ac. 15.50

Robert Gordon, Tot. 28.04 Ac.
OR12-820
ILESBORO
SEE 22-A

34.31 Ac. LOT 5 Pt.

Earl E. & Margie R. Hartley
198-534
38.00 Ac.
NW NE Pt.

133-498,660,500
82.00 Ac.
E 1/2 NE

Betty Tiller, et al *
OR39-758, (See Deed Folder For Interest)
Tot. 37.84 Ac.

William & Jo Fuller
213-36
Tot. 66.35 Ac.

26.41 Ac. LOTS 7 & 8 Pts.
Loletta & Art Williams
213-674
Tot. 28.70 Ac.

25.35 Ac. E 1/2 NW Pt.

41.00 Ac. SW NE

Jerry Fisher
Tot. 102.00 Ac.

Randy & Elizabeth Carr
218-169
Tot. 1.647 Ac.

Robert & Karen Long
OR22-204
25.00 Ac.

113-444
20.00 Ac.
LOT 3

Don & Marjorie Davis
180-94
62.9552 Ac.
N 1/2 SW Pt.

Hollis & Katherine Hart
155-133
3.002 Ac.

Kathy MacDonald
OR11-494
25.00 Ac.

George & Rosemarie Mossman

40.00 Ac. SW SW

Nellie Hockney
OR19-287
5.00 Ac.

Jack & Loretta Miller
199-659 *
Tot. 9.86 Ac.

SE SW Pt.
(Alma Miller, Life Estate)

Marlene Thompson
156-437, 205-437
Tot. 58.00 Ac.

OR47-362
29.46 Ac.
Lots 1 & 2 Pts.
SE SE Pt.

Constance Huggins
134-457
Tot. 42.00 Ac.

Avery & Valenine Miller
185-915
5.3279 Ac.

Charles & Carolyn Thomas
209-677
Tot. 7.50 Ac.

SW SE Pt.

Buckeye Recreation, Inc.
214-69

13.41 Ac. SE SE Pt.

SEC. 22