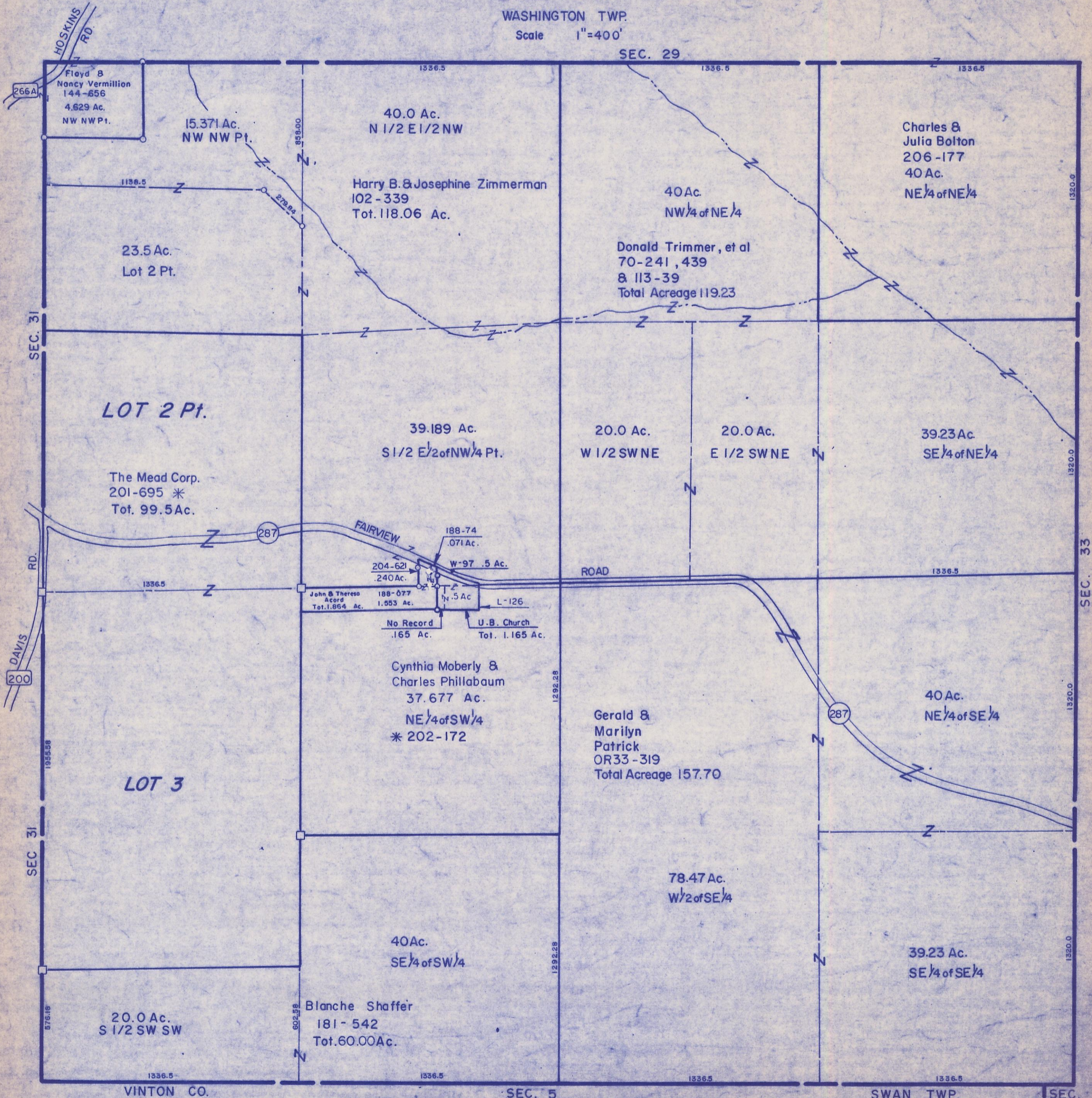


HOCKING COUNTY

Sec. 32 T 13 R 17

WASHINGTON TWP.

Scale 1"=400'



Floyd & Nancy Vermillion
144-656
4.629 Ac.
NW NW Pt.

15.371 Ac.
NW NW Pt.

40.0 Ac.
N 1/2 E 1/2 NW

Harry B. & Josephine Zimmerman
102-339
Tot. 118.06 Ac.

40 Ac.
NW 1/4 of NE 1/4

Charles & Julia Bolton
206-177
40 Ac.
NE 1/4 of NE 1/4

23.5 Ac.
Lot 2 Pt.

Donald Trimmer, et al
70-241, 439
& 113-39
Total Acreage 119.23

LOT 2 Pt.

The Mead Corp.
201-695 *
Tot. 99.5 Ac.

39.189 Ac.
S 1/2 E 1/2 of NW 1/4 Pt.

20.0 Ac.
W 1/2 SW NE

20.0 Ac.
E 1/2 SW NE

39.23 Ac.
SE 1/4 of NE 1/4

FAIRVIEW ROAD

188-74
.071 Ac.

W-97 .5 Ac.

John & Theresa Acord
Tot. 1.864 Ac.

188-077
1.553 Ac.

N-5 Ac.

L-126

No Record
.165 Ac.

U.B. Church
Tot. 1.165 Ac.

Cynthia Moberly & Charles Phillabaum
37.677 Ac.
NE 1/4 of SW 1/4
* 202-172

Gerald & Marilyn Patrick
OR33-319
Total Acreage 157.70

40 Ac.
NE 1/4 of SE 1/4

LOT 3

78.47 Ac.
W 1/2 of SE 1/4

40 Ac.
SE 1/4 of SW 1/4

39.23 Ac.
SE 1/4 of SE 1/4

20.0 Ac.
S 1/2 SW SW

Blanche Shaffer
181-542
Tot. 60.00 Ac.

VINTON CO.

SEC. 5

SWAN TWP.

SEC. 32

SEC. 4