

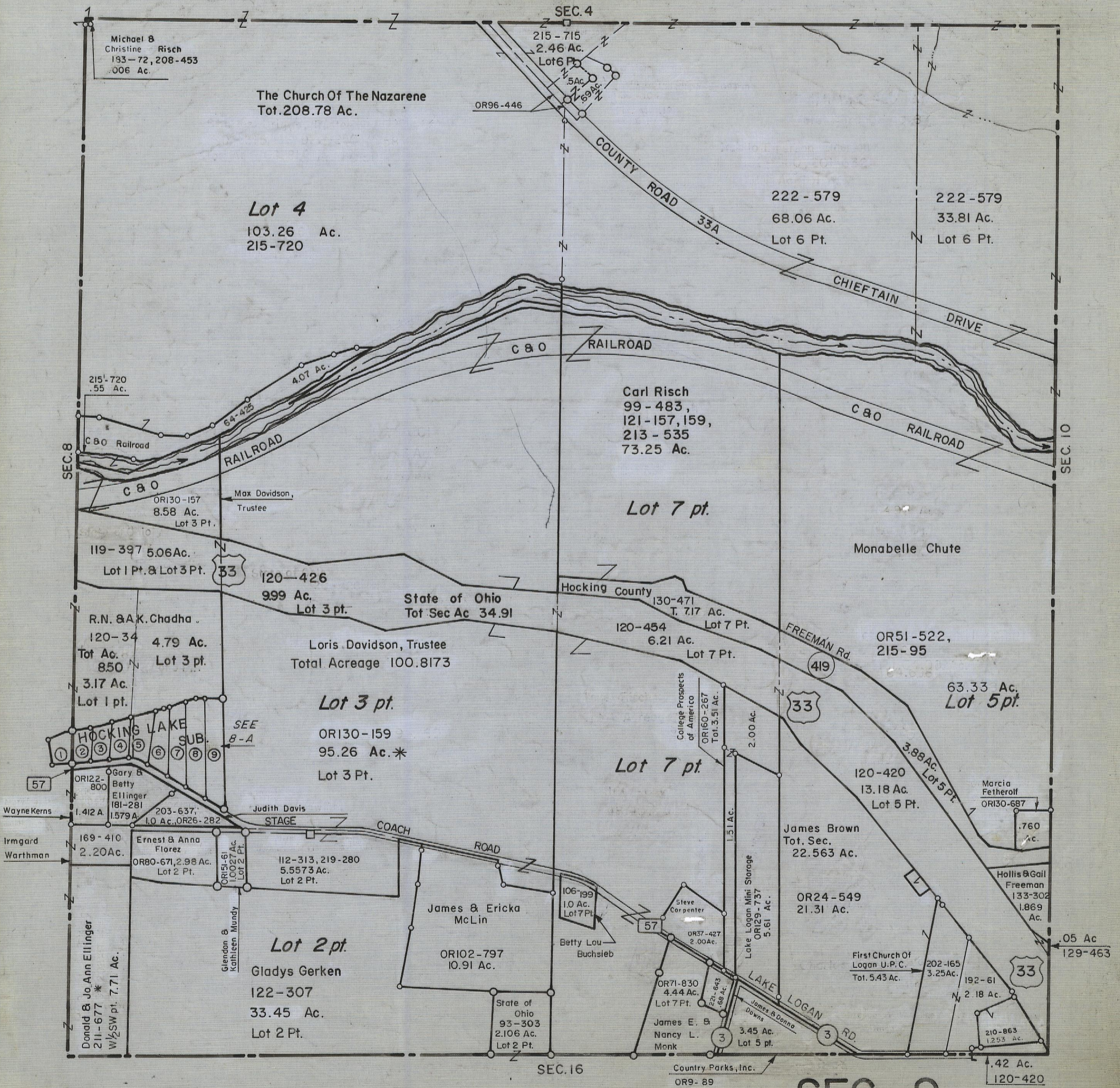
4-5-00

# HOCKING COUNTY

Sec. 9 T.14 R.17

FALLS TWP

Scale 1"=400'



Michael &  
Christine Risch  
183-72, 208-453  
006 Ac.

The Church Of The Nazarene  
Tot. 208.78 Ac.

SEC. 4

215-715  
2.46 Ac.  
Lot 6 Pt.

OR96-446

COUNTY ROAD 33A

222-579  
68.06 Ac.  
Lot 6 Pt.

222-579  
33.81 Ac.  
Lot 6 Pt.

Lot 4  
103.26 Ac.  
215-720

CHIEFTAIN DRIVE

C & O RAILROAD

Carl Risch  
99-483,  
121-157, 159,  
213-535  
73.25 Ac.

SEC. 8

215-720  
.55 Ac.

RAILROAD

Lot 7 pt.

Max Davidson,  
Trustee

C & O RAILROAD

119-397 5.06 Ac.  
Lot 1 Pt. & Lot 3 Pt.

120-426  
999 Ac.  
Lot 3 pt.

State of Ohio  
Tot Sec Ac 34.91

130-471  
T. 7.17 Ac.  
Lot 7 Pt.

Monabelle Chute

R.N. & A.K. Chadha  
120-34 4.79 Ac.  
Tot Ac. 8.50  
3.17 Ac.  
Lot 1 pt.

Loris Davidson, Trustee  
Total Acreage 100.8173

Lot 7 pt.

Lot 3 pt.  
OR130-159  
95.26 Ac.\*  
Lot 3 Pt.

120-454  
6.21 Ac.  
Lot 7 Pt.

OR51-522,  
215-95

63.33 Ac.  
Lot 5 pt.

HOCKING LAKE SUB.

SEE  
B-A

OR122-800  
Gary & Betty  
Ellinger  
181-281  
1.579 Ac.

Judith Davis  
STAGE

College Prospects  
of America  
OR160-267  
Tot. 3.51 Ac.

James Brown  
Tot. Sec.  
22.563 Ac.

Marcia  
Fetherolf  
OR130-687  
.760  
Ac.

Wayne Kerns  
1.412 A

203-637,  
1.0 Ac., OR26-282

Ernest & Anna  
Florez  
OR80-671, 2.98 Ac.  
Lot 2 Pt.

112-313, 219-280  
5.5573 Ac.  
Lot 2 Pt.

106-199  
1.0 Ac.  
Lot 7 Pt.

Steve  
Corpenier  
OR37-427  
2.00 Ac.

OR24-549  
21.31 Ac.

Hollis & Gail  
Freeman  
133-302  
1.869  
Ac.

Irmgard  
Warthman  
169-410  
2.20 Ac.

OR151-61  
1.0027 Ac.  
Lot 2 Pt.

Lot 2 pt.  
Gladys Gerken  
122-307  
33.45 Ac.  
Lot 2 Pt.

James & Ericka  
McLin  
OR102-797  
10.91 Ac.

State of Ohio  
93-303  
2.106 Ac.  
Lot 2 Pt.

James E. &  
Nancy L.  
Monk  
OR71-830  
4.44 Ac.  
Lot 7 Pt.

OR129-737  
5.61 Ac.

First Church Of  
Logan U.P.C.  
Tot. 5.43 Ac.

192-61  
2.18 Ac.

Donald & Jo Ann Ellinger  
211-677 \*  
w/1/2 SW pt. 7.71 Ac.

Glendon &  
Kathleen Mundy

COACH ROAD

SEC. 16

Country Parks, Inc.  
OR9-89

Lake Logan Mini Storage  
OR129-737  
5.61 Ac.

202-165  
3.25 Ac.

210-863  
1.253 Ac.

.05 Ac  
129-463

.42 Ac.  
120-420

SEC. 9