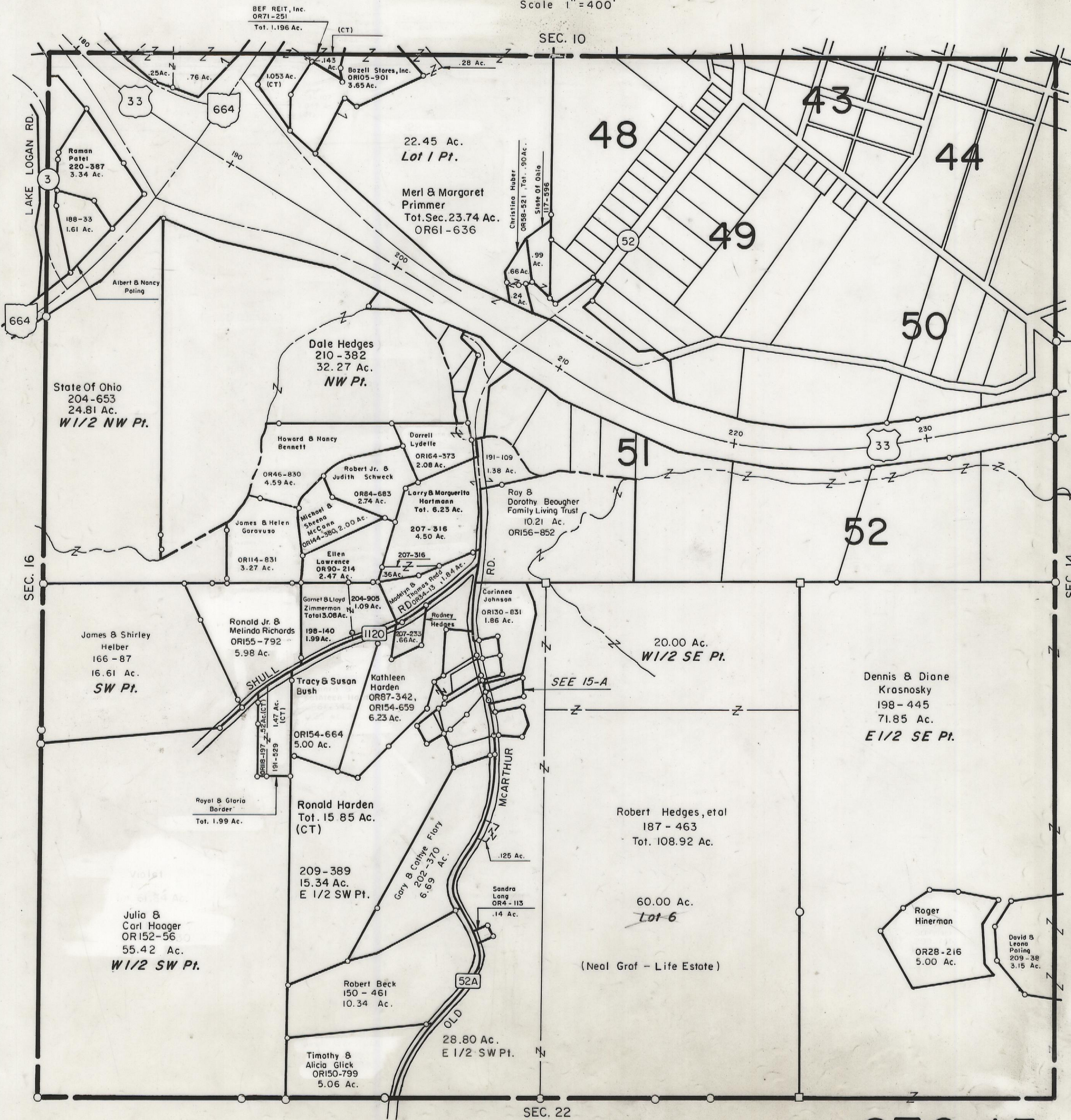


HOCKING COUNTY

Sec. 15 T14 R17

FALLS TWP.

Scale 1" = 400'



BEF REIT, Inc.
OR71-251
Tot. 1.196 Ac. (CT)

Bazell Stores, Inc.
OR105-901
3.65 Ac.

22.45 Ac.
Lot 1 Pt.

Merl & Margaret
Primmer
Tot. Sec. 23.74 Ac.
OR61-636

Christina Huber
OR58-521, Tot. .90 Ac.
State Of Ohio
117-596

48

43

44

49

50

Dale Hedges
210-382
32.27 Ac.
NW Pt.

State Of Ohio
204-653
24.81 Ac.
W 1/2 NW Pt.

Howard & Nancy
Bennett
OR46-830
4.59 Ac.

Dorrell
Lydelle
OR164-373
2.08 Ac.

Robert Jr. &
Judith Schwack
OR84-683
2.74 Ac.

Larry & Marguerita
Hartmann
Tot. 6.23 Ac.

Ray &
Dorothy Beougher
Family Living Trust
10.21 Ac.
OR156-852

James & Helen
Garavuso
OR114-831
3.27 Ac.

Michael &
Sheena
McCann
OR144-380, 2.00 Ac.

207-316
4.50 Ac.

Ellen
Lawrence
OR90-214
2.47 Ac.

207-316
1.36 Ac.

204-905
1.09 Ac.
Total 3.08 Ac.

Corinne
Johnson
OR130-831
1.86 Ac.

James & Shirley
Helber
166-87
16.61 Ac.
SW Pt.

Ronald Jr. &
Melinda Richards
OR155-792
5.98 Ac.

Garnet & Lloyd
Zimmerman
Total 3.08 Ac.

207-233
1.66 Ac.

20.00 Ac.
W 1/2 SE Pt.

Dennis & Diane
Krasnosky
198-445
71.85 Ac.
E 1/2 SE Pt.

Tracy & Susan
Bush
OR154-664
5.00 Ac.

Kathleen
Harden
OR87-342,
OR154-659
6.23 Ac.

SEE 15-A

Royal & Gloria
Borner
Tot. 1.99 Ac.

Ronald Harden
Tot. 15.85 Ac.
(CT)

Robert Hedges, et al
187-463
Tot. 108.92 Ac.

209-389
15.34 Ac.
E 1/2 SW Pt.

Cory & Carlye
Flory
202-370
6.69 Ac.

60.00 Ac.
Lot 6

Julia &
Carl Haager
OR152-56
55.42 Ac.
W 1/2 SW Pt.

Robert Beck
150-461
10.34 Ac.

Sandra
Lang
OR4-113
.14 Ac.

(Neal Graf - Life Estate)

Timothy &
Alicia Glick
OR150-799
5.06 Ac.

28.80 Ac.
E 1/2 SW Pt.

Roger
Hinerman
OR28-216
5.00 Ac.

David B
Leona Pating
209-38
3.15 Ac.

SEC. 22

SEC. 15