

4-5-00

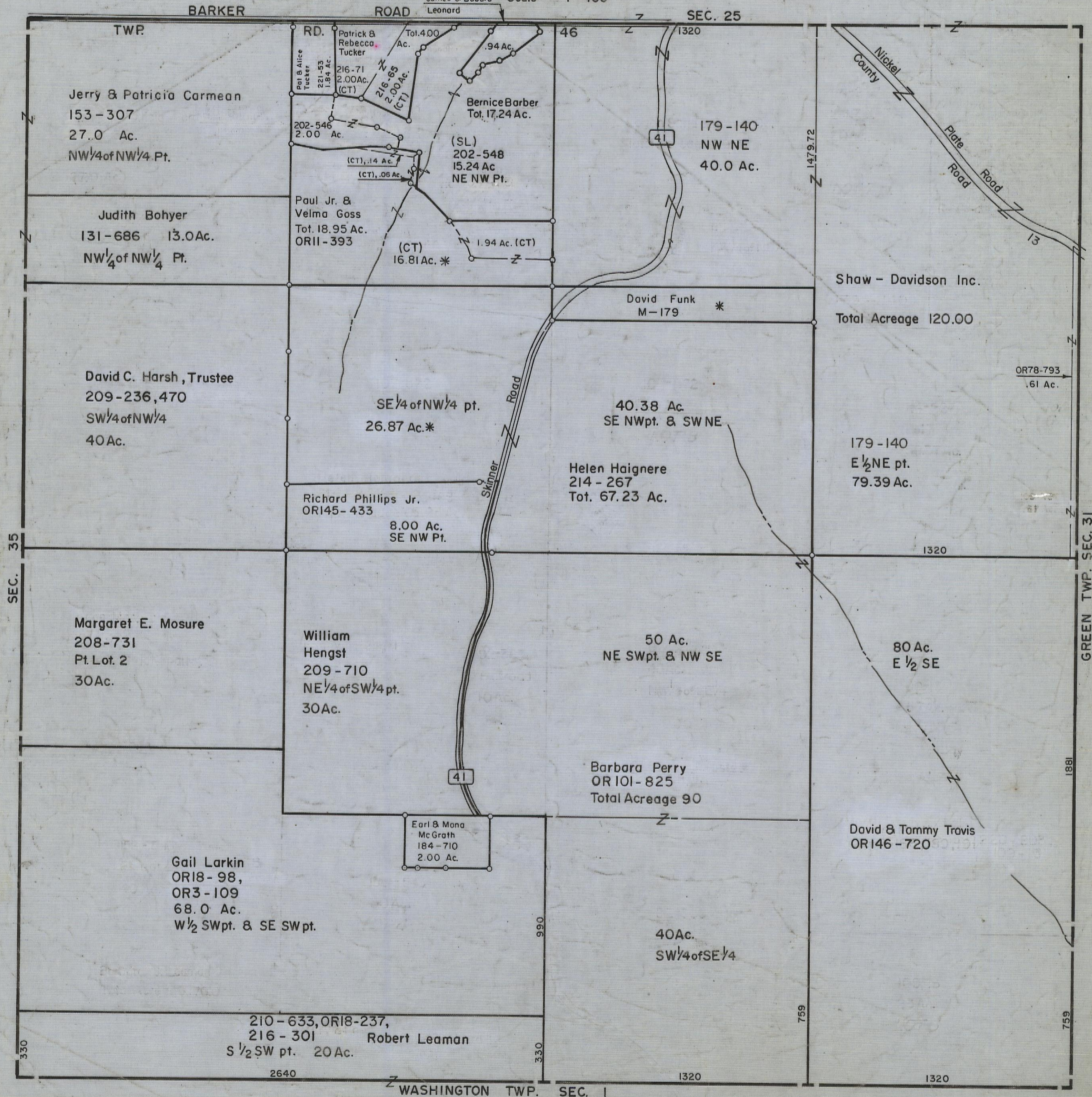
HOCKING COUNTY

Sec.36 T14 R17

FALLS TWP.

Scale 1"=400'

ORI49-709
James & Barbara Leonard



Jerry & Patricia Carmean
153-307
27.0 Ac.
NW 1/4 of NW 1/4 Pt.

Judith Bohyer
131-686 13.0 Ac.
NW 1/4 of NW 1/4 Pt.

David C. Harsh, Trustee
209-236, 470
SW 1/4 of NW 1/4
40 Ac.

Margaret E. Mosure
208-731
Pt. Lot. 2
30 Ac.

Gail Larkin
OR18-98,
OR3-109
68.0 Ac.
W 1/2 SW pt. & SE SW pt.

210-633, OR18-237,
216-301
S 1/2 SW pt. 20 Ac. Robert Leaman

RD. Patrick & Rebecca Tucker
216-71 2.00 Ac. (CT)
216-65 2.00 Ac. (CT)
Tot. 4.00 Ac.
Bernice Barber
Tot. 17.24 Ac.

Paul Jr. & Velma Goss
Tot. 18.95 Ac. OR11-393
(CT) 1.94 Ac. (CT)
(CT) 1.14 Ac.
(CT) .05 Ac.

SE 1/4 of NW 1/4 pt.
26.87 Ac.*

Richard Phillips Jr.
OR145-433
8.00 Ac.
SE NW Pt.

William Hengst
209-710
NE 1/4 of SW 1/4 pt.
30 Ac.

Earl & Mona McGrath
184-710
2.00 Ac.

46
1320
179-140
NW NE
40.0 Ac.

David Funk
M-179 *

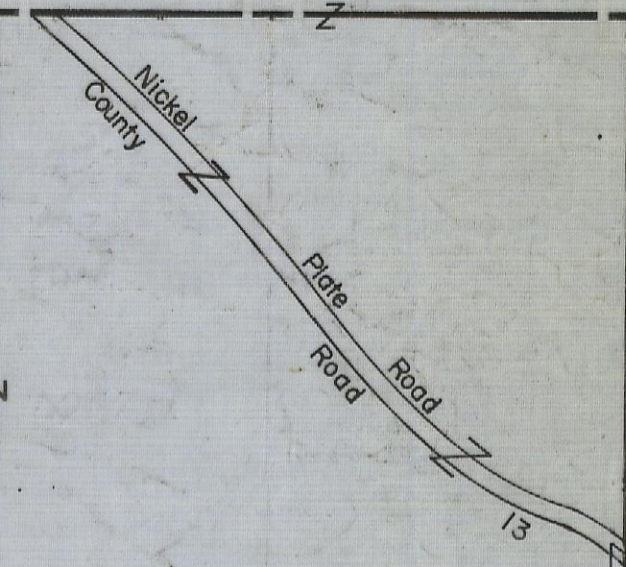
40.38 Ac.
SE NW pt. & SW NE

Helen Haignere
214-267
Tot. 67.23 Ac.

50 Ac.
NE SW pt. & NW SE

Barbara Perry
OR101-825
Total Acreage 90

40 Ac.
SW 1/4 of SE 1/4



Shaw - Davidson Inc.
Total Acreage 120.00

179-140
E 1/2 NE pt.
79.39 Ac.

80 Ac.
E 1/2 SE

David & Tommy Travis
OR146-720

SEC. 36